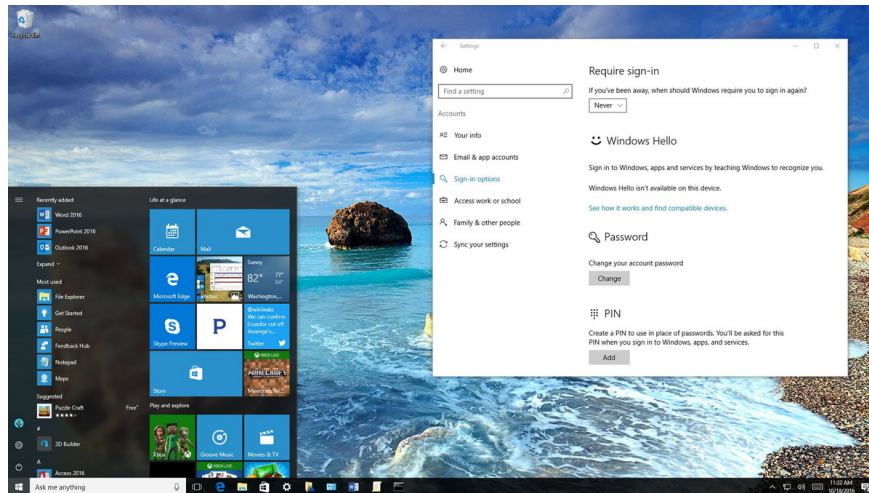


Your computer requires entering a password after starting from Sleep mode, this is a fix

To save time and effort, you can set Windows to automatically log in after each time you boot from sleep mode. In the following article, Network Administrator will show you how to set up Windows to automatically log in on Windows 7, 8, 10, Vista and Windows XP.

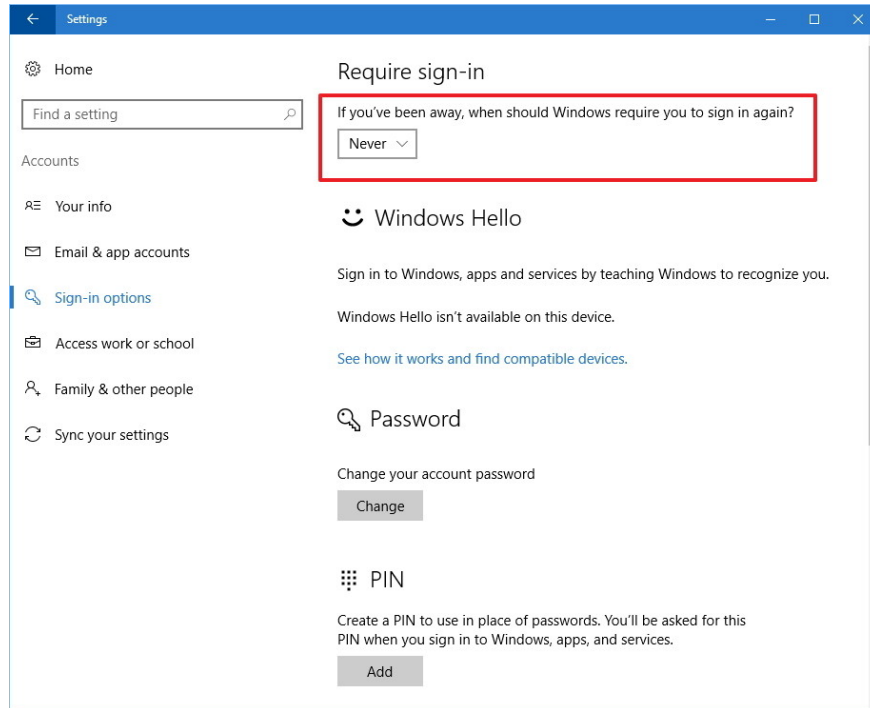
When you leave the computer in sleep mode (Sleep), by default after booting the computer, Windows will ask you to enter the login password. To save time and effort, you can set Windows to automatically log in after each time you start your computer from Sleep mode (sleep mode).



Part 1: On a Windows 10 computer

1. Through Settings settings

1. First open the Settings app.
2. On the Settings window, find and click on **Accounts** .
3. Next click **Sign-in options** .
4. In **Require sign-in**, click **Never** from the Menu dropdown to finish.



If you want to display a password entry message when starting your computer from Sleep mode, follow the same steps, then go to Step 4 and select **When PC wakes up from sleep** .

2. Use Group Policy

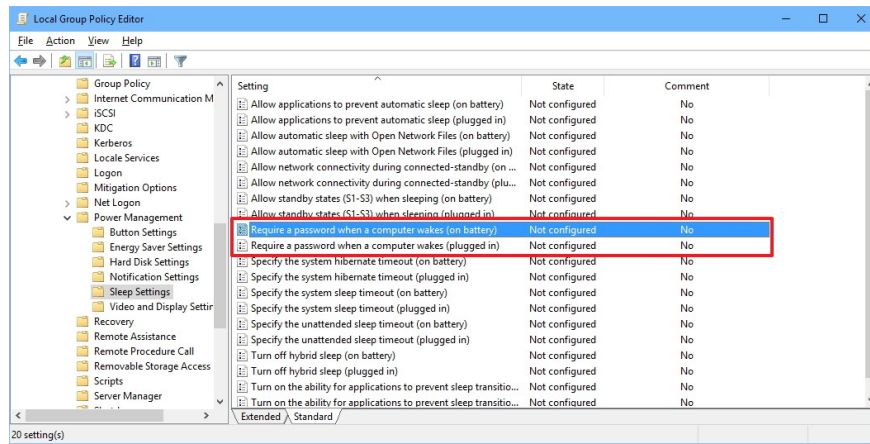
If you are using Windows 10 Pro, you can use Group Policy Editor to prevent the operating system from stopping the password entry when the laptop uses the battery or when plugging in the charger.

To do this thing:

1. Press the **Windows + R** key combination to open the Run command window.
2. Next enter **gpedit.msc** in the Run command window and press Enter or click **OK** to open Local Group Policy Editor.
3. On the Local Group Policy Editor window you navigate to the key:

Computer Configuration> Administrative Templates> System> Power Management> Sleep Settings

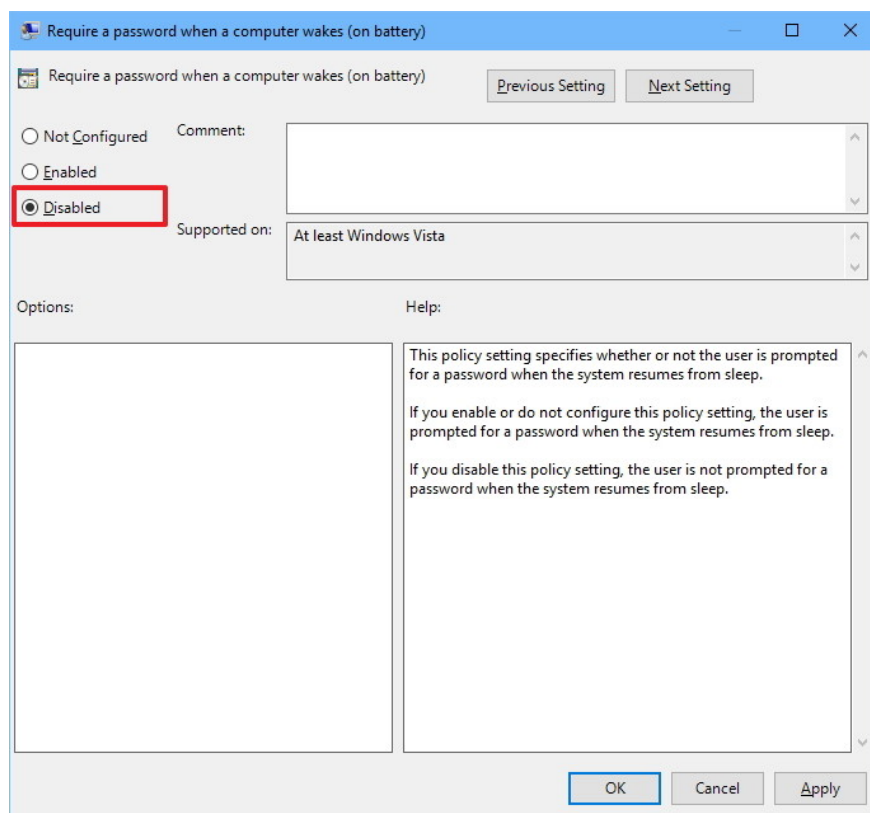
4. Next, find and double-click policy **Require a password when a computer wakes (on battery)** or **Require a password when a computer wakes (Plugged in)**.



5. On the next window click **Disable** in the left pane.

6. Click **Apply** .

7. Click **OK** to complete the process.



After completing the steps, from now on when you start your computer from Sleep mode, you will no longer have to enter the access password.

In case, if you want to display a password entry message when starting your computer from Sleep mode, follow the same steps, go to step 5, select Not configured option is done.

3. Use Command Prompt

If you are using Windows 10 Home, and you cannot access the Local Group Policy Editor (only available on Windows 10 Pro, Enterprise, and Education), then you can use the Command Prompt.

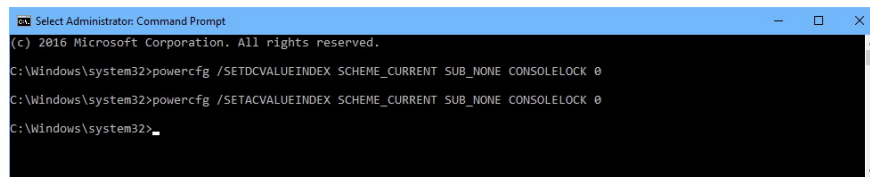
To disable the password entry request when Windows 10 starts from Sleep mode, follow the steps below:

1. Press **Windows + X** key combination to open Power User Menu, where you click the **Command Prompt (admin)**.
2. If you want to disable the login option when your computer uses the battery, enter the following command into the Command Prompt and press Enter:

```
powercfg / SETDCVALUEINDEX SCHEME_CURRENT SUB_NONE CONSOLELOCK 0
```

If you want to disable the login option when your device plugs in, enter the following command into the Command Prompt window and press Enter:

```
powercfg / SETACVALUEINDEX SCHEME_CURRENT SUB_NONE CONSOLELOCK 0
```



```
Select Administrator: Command Prompt
(c) 2016 Microsoft Corporation. All rights reserved.
C:\Windows\system32>powercfg /SETDCVALUEINDEX SCHEME_CURRENT SUB_NONE CONSOLELOCK 0
C:\Windows\system32>powercfg /SETACVALUEINDEX SCHEME_CURRENT SUB_NONE CONSOLELOCK 0
C:\Windows\system32>
```

To enable the option to require a password when starting your computer from Sleep mode, follow the steps below:

1. Press **Windows + X** key combination to open Power User Menu, where you click the **Command Prompt (admin)**.
2. If you want to activate the login option when your computer uses the battery, enter the following command into the Command Prompt and press Enter:

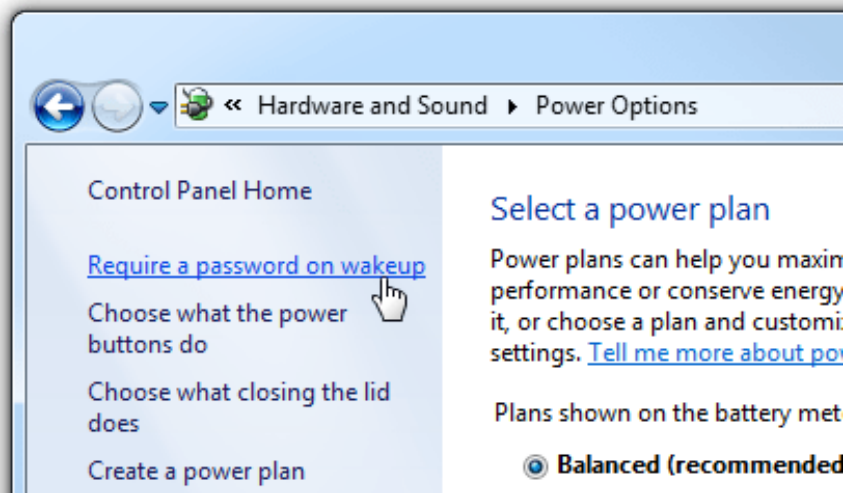
```
powercfg / SETDCVALUEINDEX SCHEME_CURRENT SUB_NONE CONSOLELOCK 1
```

If you want to activate the login option when your device plugs in, enter the following command into the Command Prompt window and press Enter:

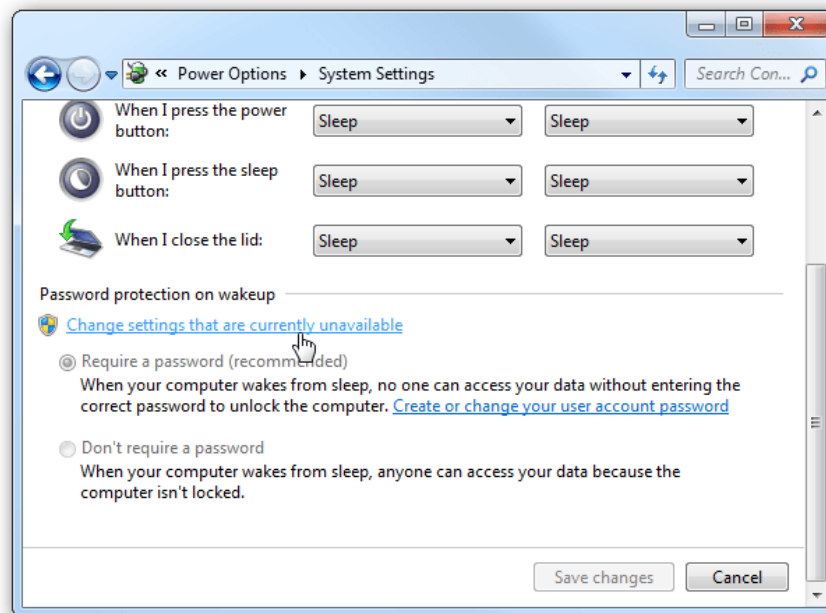
```
powercfg / SETACVALUEINDEX SCHEME_CURRENT SUB_NONE CONSOLELOCK 1
```

Part 2: On Windows 7, 8

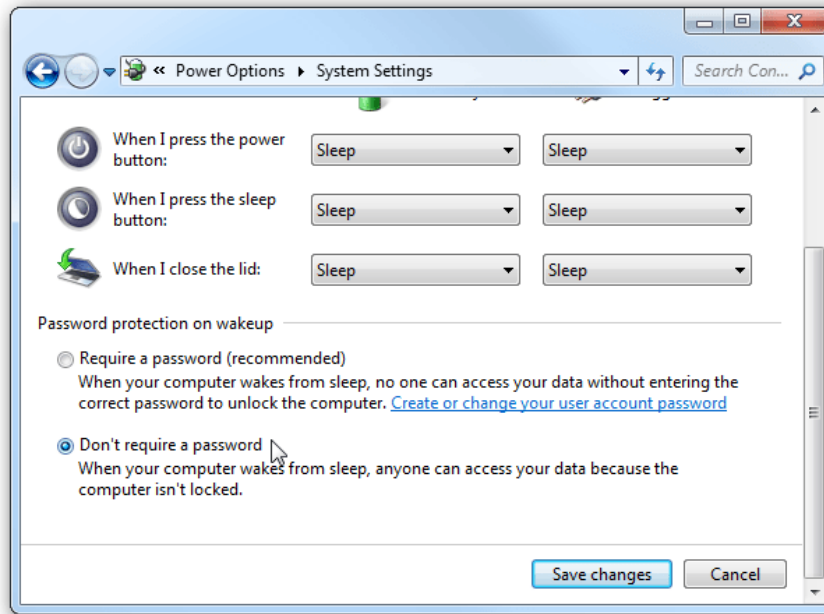
On Windows 7, 8 or Windows 10, open Power Option in Control Panel then click **Require a password on wakeup** in the left pane.



Next click on the **Change settings** link that are currently unavailable.



Finally click select **Don't require a password** and save your changes.



Part 3: Sensors use Windows 8 operating system

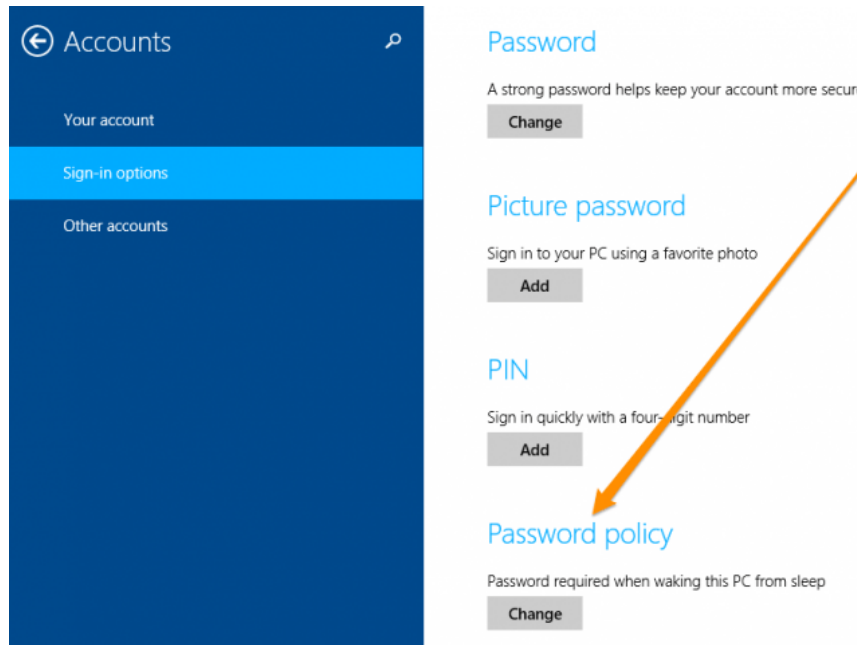
If you are using a tablet running Windows 8, you can follow the instructions below:

First open **PC Setting** , then click on **Accounts** .



On the Account interface, click on the option **Sign-in Options** in the left pane.

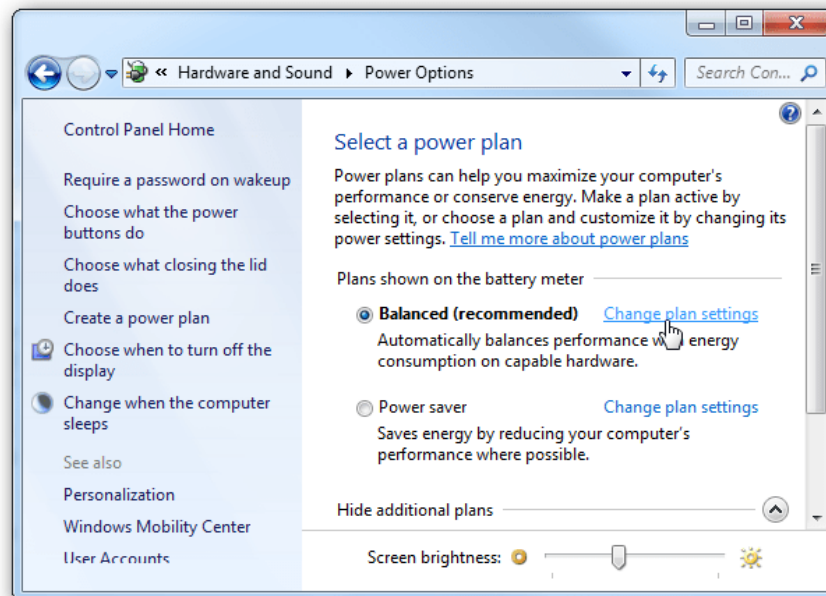
In this option, you can choose to access the device with a picture password or PIN instead of using a normal password.



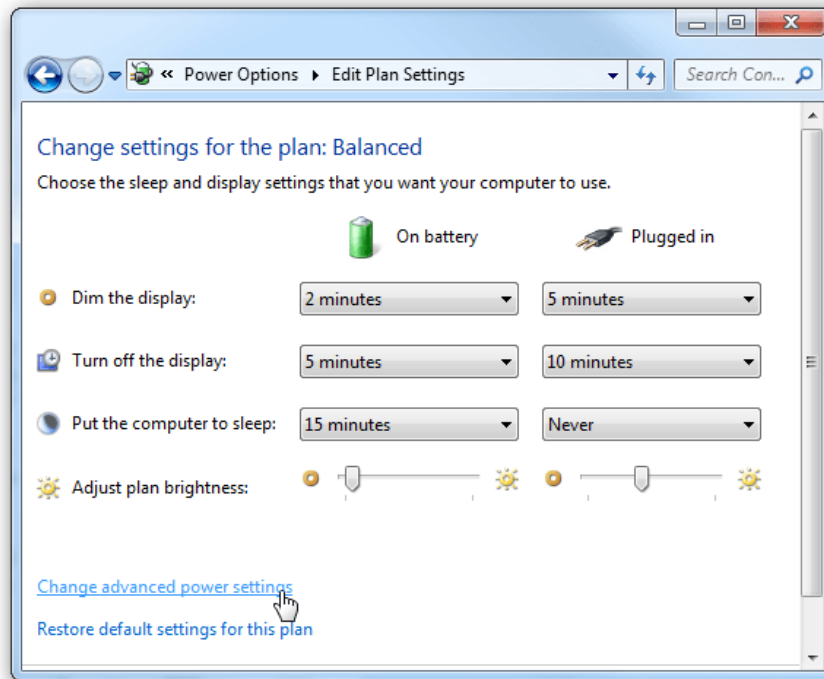
Or if you want to remove the login password, you can select **Password policy**. Then click **Change** so that Windows stops asking for a password when you start the device.

Part 4. On Windows Vista

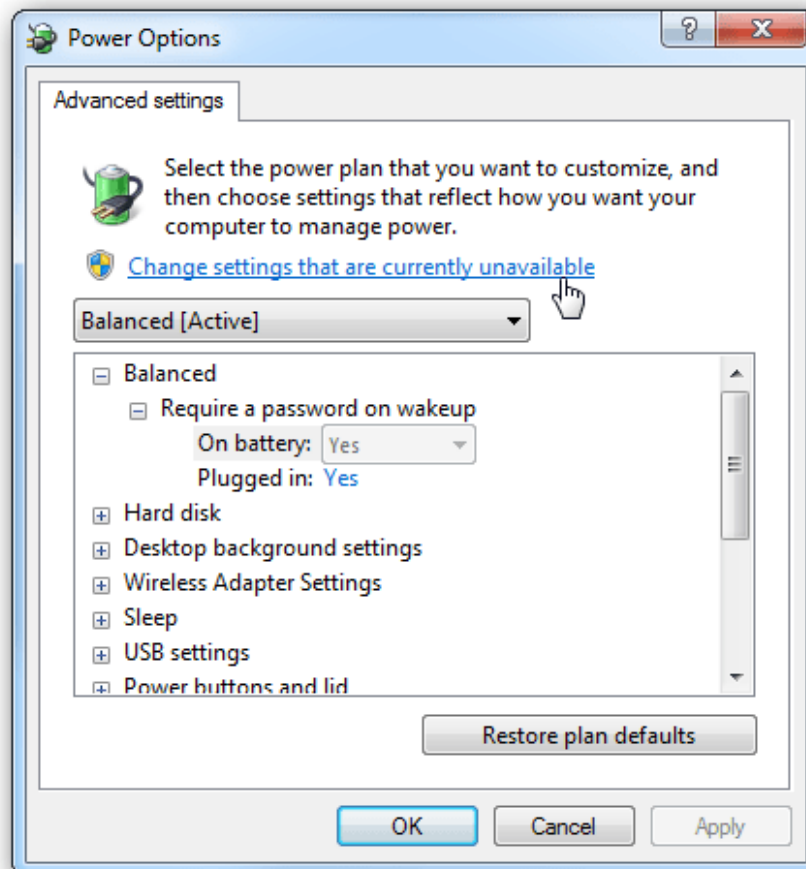
Open Power Options in Control Panel, find the **Power Plan** you are using, then click on the **Change plan settings link** .



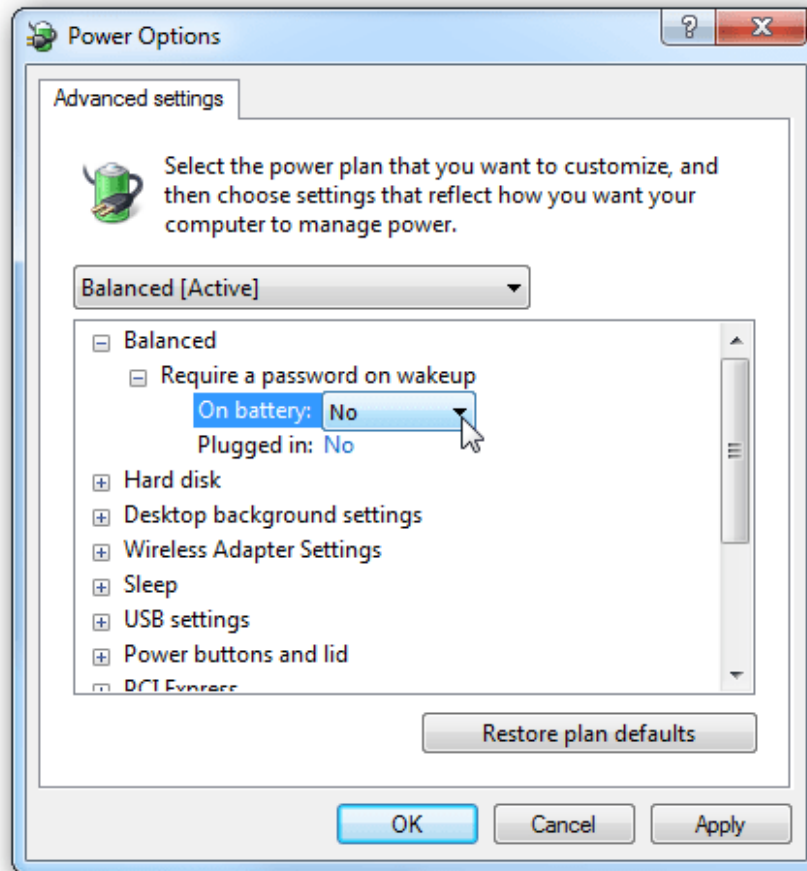
Next click on the **Change advanced power settings link** at the bottom of the interface.



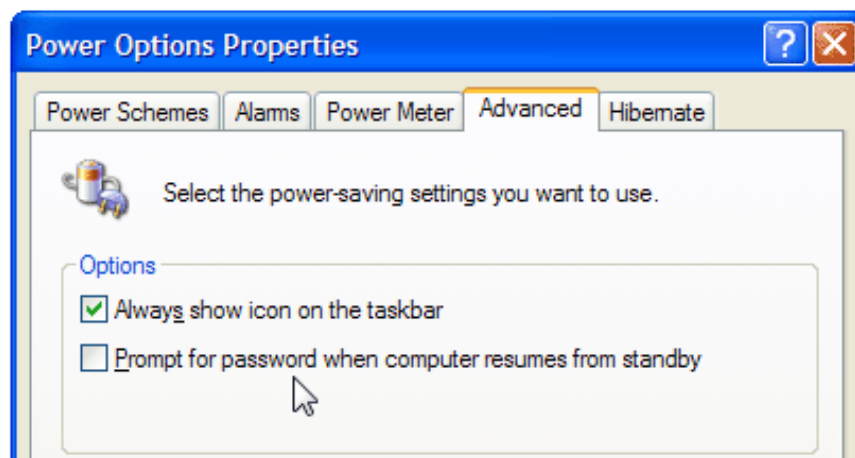
Select **Change settings that are currently unavailable** .



Finally, in the option **Require a password on wakeup**, change the **On Battery** and **Plugged in** value from **Yes** to **No**.



Part 5. On Windows XP



On Windows XP, simply open Power Options in Control Panel, find the **Advanced** tab, and then uncheck the box at **Prompt for password when computer resumes from standby**.

You can refer to more:

1. 11 tips to help you fix 100% Full Disk error on Windows 8.1
2. How to disable / enable Windows Firewall in Windows 7, 8
3. Instructions for fixing Windows 10 errors do not turn off on computers and laptops

Good luck!

You finished reading the article "**Your computer requires entering a password after starting from Sleep mode, this is a fix**" edited by the [TipsMake](#) team. We hope this article has provided you with many useful tech tips and tricks. You can search for similar articles on tips and guides. Thank you for reading and for following us regularly.