

Wireless charging method for other devices on Samsung Galaxy S10

With the wireless charging guide on Samsung S10 / S10 +, you can charge devices that are running low on battery power with this Wireless PowerShare feature.

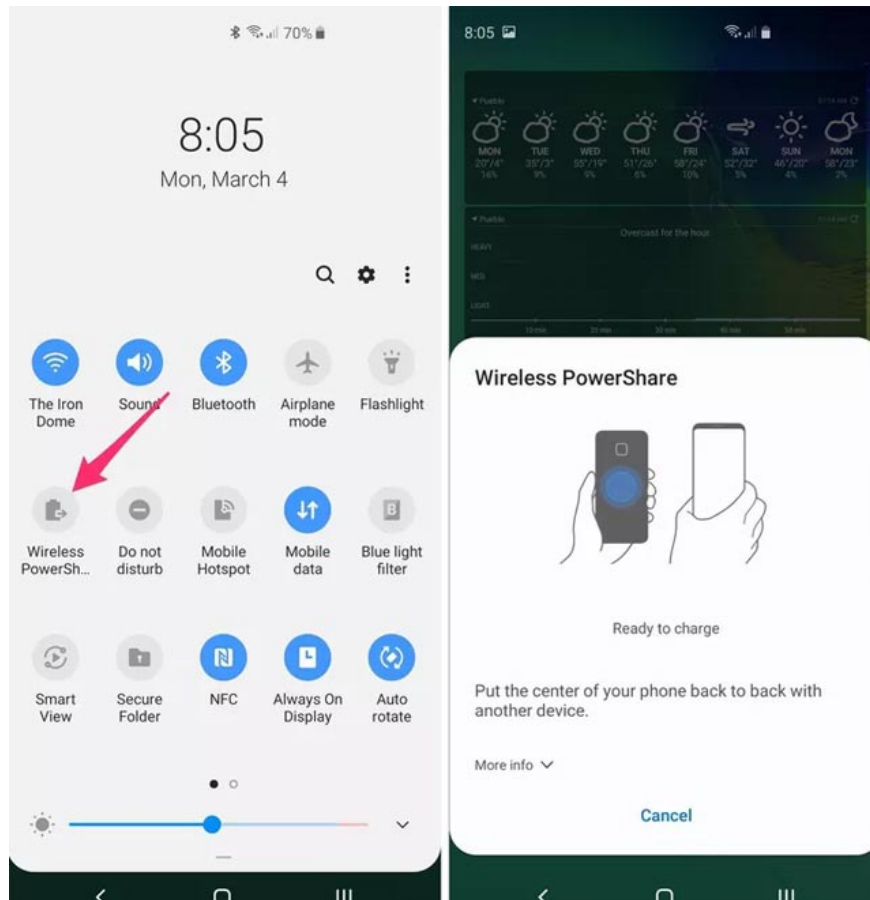
Whenever Samsung launches a new Flagship phone, it will feature outstanding features in its device. One of the useful features introduced by Samsung on the Samsung Galaxy S10 / S10 + was released in February, which is the wireless charging feature for other devices.

Also known as reverse charging, or called Wireless PowerShare, specifically the S10 / S10 + will charge wireless devices that support wireless charging like Galaxy Buds headsets and some other wireless charging smartphones. . This feature is very convenient when you are running out of phone battery, but the charger is not found. The reverse charging method for other devices with S10 / S10 + you can follow the instructions below.

1. How to hide "perforated" camera on Samsung Galaxy S10 series
2. Invite to download a unique set of wallpapers for Samsung S10 / S10 + to help cover the "mole" camera

Reverse charging instructions for other devices on Samsung Galaxy S10

Step 1: First, drag the status notification menu from the top of the screen, then select the Wireless PowerShare icon. Soon you will see a screen showing the wireless charging feature. Please leave the notification screen of this feature intact.



The next step is to put the device you need to charge on the back of Samsung Galaxy S10, turn on wireless charging mode like phone or Galaxy Buds as shown in this picture to get the device to charge from S10.



When the connection is successful, there will be a notification to start charging on the device being powered by Samsung S10.



A few notes when using the wireless charging feature on Samsung Galaxy S10

1. You should remove the phone cover to make sure the wireless charging feature works stably
2. Make sure that the Samsung Galaxy S10 battery capacity is not less than 40% before making a wireless reverse charge
3. The device that receives the charger from Samsung Galaxy S10 must be a standard device that supports Qi charging

With the wireless charging feature on the Samsung S10, you can wirelessly charge other devices when you can't find the charger, hoping you will make good use of this wireless charging feature on this Samsung Galaxy S10 / S10 + .

You finished reading the article "**Wireless charging method for other devices on Samsung Galaxy S10**" edited by the [TipsMake](#) team. We hope this article has provided you with many useful tech tips and tricks. You can search for similar articles on tips and guides. Thank you for reading and for following us regularly.