

When installing Windows 10, I get the error 'Windows can't be installed on driver 0 partition 1'.

During the Windows 10 installation process, the error 'Windows can't be installed on driver 0 partition 1' occurs quite frequently, especially for those installing the operating system for the first time. So, how can you avoid this error? The following guide will show you how.

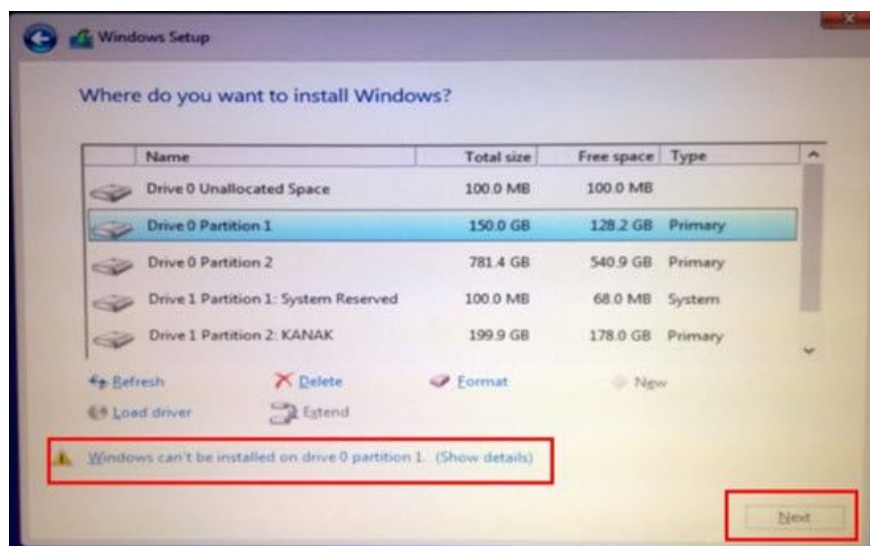
In fact, there are many reasons why **Windows 10 might display the error "Windows can't be installed on driver 0 partition 1"**. There isn't one specific error that causes this. Simply put, it's a message indicating a problem with your drive or partition 1. It could also be a message for drivers 0, 1, 2, 3, or partitions 1, 2, 3, and 4. Fortunately, fixing the Windows 10 error "Windows can't be installed on driver 0 partition 1" isn't difficult; you just need to pay attention to a few points in the article below.



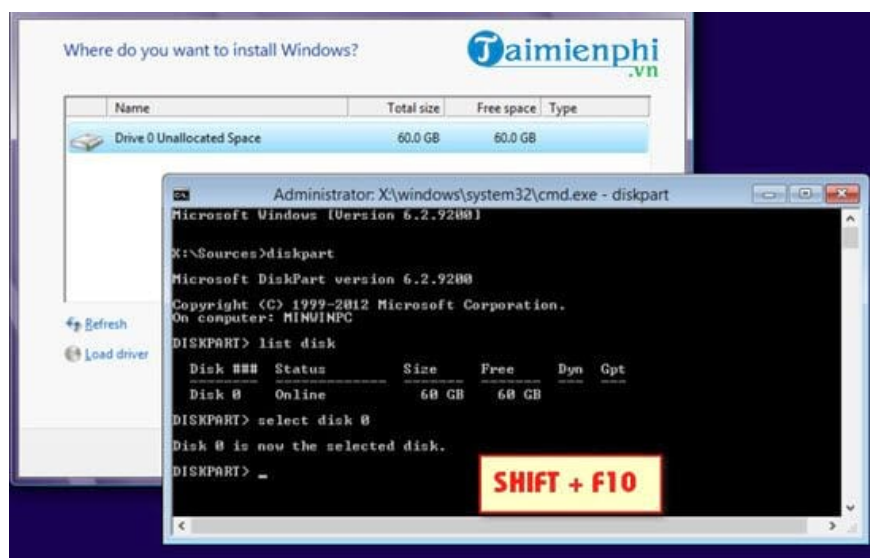
Fixing the "Windows can't be installed on driver 0 partition 1" error when installing Windows 10.

Note before proceeding:

- With this method, you'll definitely need two separate drives to create separate partitions. For example, an SSD drive for installing Windows 10 and an HDD drive for storing data.
- If you don't have two separate drives, you should know that this method will erase all your data.



Step 1: This method is only applicable when you encounter the "Windows can't be installed on driver 0 partition 1" error during Windows 10 installation. In that case, simply press **Shift + F10** to open the Command Prompt window.



Here, you type the three commands one after another, and remember to end each command with the Enter key.

- **Diskpart** : This command allows you to access a drive.
- **List disk** : This command lists all the drives you have.
- **Select disk 0** : This selects the drive, usually drive 0. It could be 1, 2, or 3 depending on the number of drives and where you want to install Windows 10.

Step 2: After typing the three commands above, type the commands below one by one to fix the Windows 10 installation error "Windows can't be installed on driver 0 partition 1". Remember to press Enter after each **command** .

```
Administrator: X:\windows\system32\cmd.exe
X:\Sources>diskpart
Microsoft DiskPart version 6.2.9200
Copyright (C) 1999-2012 Microsoft Corporation.
On computer: MINWINPC
DISKPART> list disk
   Disk ###  Status       Size      Free      Dyn  Gpt
   -----  -
   Disk 0    Online       60 GB     60 GB
DISKPART> select disk 0
Disk 0 is now the selected disk.
DISKPART> clean
DiskPart succeeded in cleaning the disk.
DISKPART> create partition primary
DiskPart succeeded in creating the specified partition.
DISKPART> active
DiskPart marked the current partition as active.
DISKPART> format quick fs=ntfs
    100 percent completed
DiskPart successfully formatted the volume.
DISKPART> assign
DiskPart successfully assigned the drive letter or mount point.
DISKPART> exit
Leaving DiskPart...
X:\Sources>exit
```

- **Clean** : This command will erase all your data, so you need to consider this before proceeding.
- **Create partition primary** : Recreates a partition for the drive.
- **Active** : Activates that partition to create drives C, D, and E.
- **Format quick fs-NTFS** : A quick format command for the drive.
- **Assign** : This command assigns the newly formatted partition to C or DE, depending on the available order.
- **Exit (twice)**: This command is used to exit the Command Prompt after completing the Windows 10 installation repair for the "Windows can't be installed on driver 0 partition 1" error. Press twice to completely exit the Command Prompt.

Above is a quick guide on how to fix the Windows 10 installation error "Windows can't be installed on driver 0 partition 1". Hopefully, after following the steps above, you will completely resolve the Windows 10 installation error "Windows can't be installed on driver 0 partition 1" and be able to install Windows 10 normally. Installing Windows 10 is not difficult and is very fast, so there won't be a long waiting time like with previous operating systems.

If you unfortunately encounter error 0xC1900101-0x30018 during the Windows 10 installation process, don't panic or be discouraged, as this is a rare and easily fixable error. Refer to the guide on how to **fix error 0xC1900101-0x30018** when installing Windows 10 here for specific instructions.

You finished reading the article "**When installing Windows 10, I get the error 'Windows can't be installed on driver 0 partition 1'.**" edited by the [TipsMake](#) team. We hope this article has provided you with many useful tech tips and tricks. You can search for similar articles on tips and guides. Thank you for reading and for following us regularly.

