

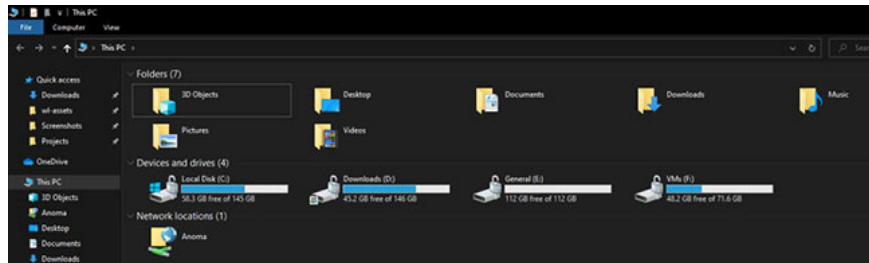
Why is there a lock icon on the drive and how to remove it?

Are you wondering why there is a lock icon on the drive in File Explorer? The following article will explain what that icon is and how to remove the lock icon from the drive in Windows 10.

Why is there a lock icon on the drive in Windows 10?

Windows 10 has two built-in encryption features. The first one is **BitLocker** and it is only available for Pro and Enterprise users. The second is called **Device Encryption** and is available to all users, including Windows 10 Home users.

If you see a lock icon on your drive and are using Windows 10 Home, or if you're sure you're not using BitLocker, it's due to the Device Encryption feature.



While Device Encryption is available to all Windows 10 users, it is only automatically enabled when the following requirements are met:

1. Your laptop or desktop must have a TPM (Trusted Platform Module) chip version 2 on .
2. Supports Modern Standby feature.
3. Has modern UEFI (Unified Extensible Firmware Interface).
4. TPM functionality is enabled via UEFI.
5. You need to sign in to Windows 10 with a Microsoft account.

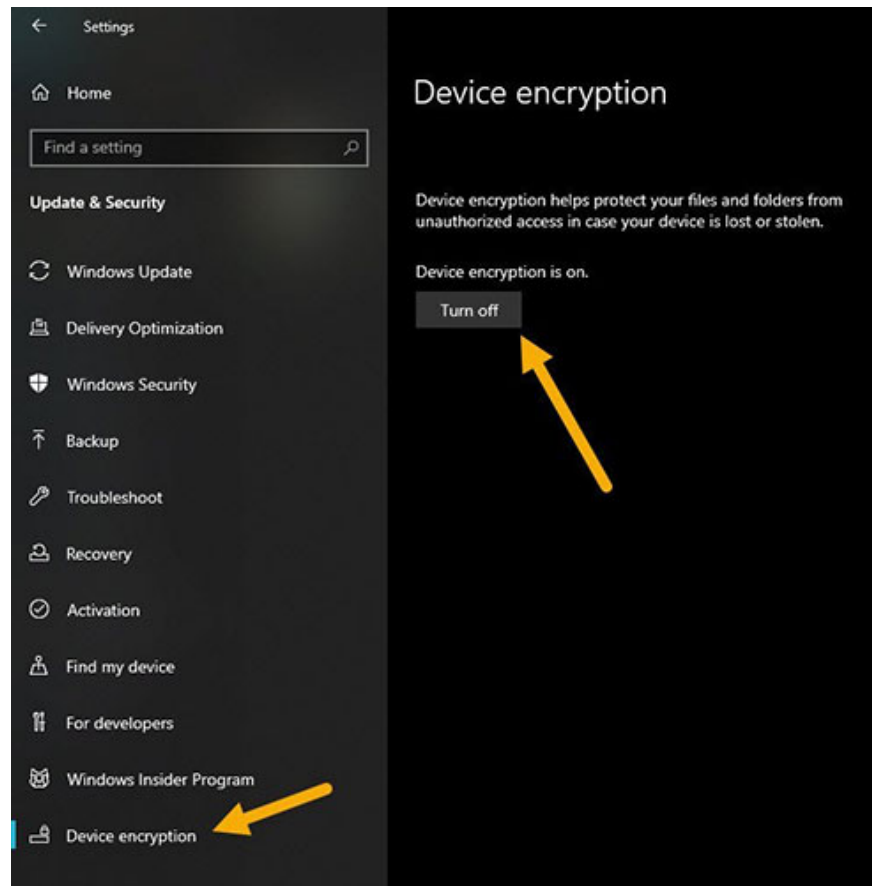
If you don't use BitLocker and don't want to use the Device Encryption feature, follow the steps below to turn off Device Encryption and remove the lock icon from the drive in Windows 10.

How to remove the lock icon on the drive in Windows 10

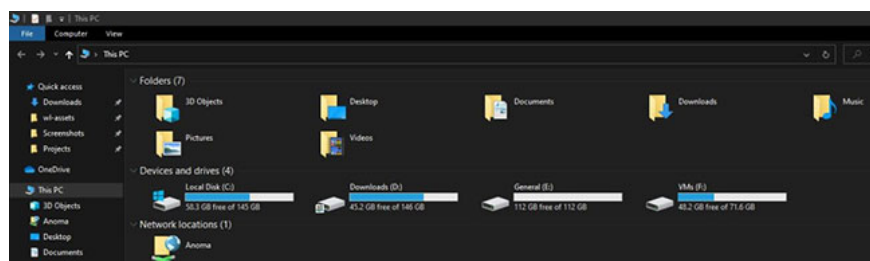
To remove the lock icon on drives in Windows 10, you must turn off the Device Encryption feature. Here's how:

1. Open the Settings app in Windows 10.

2. Click 'Update & Security' .
3. Select 'Device Encryption' on the sidebar.



4. Click "**Turn off**" on the right panel. As soon as you click this button, Windows 10 will turn off Device Encryption and automatically decrypt all encrypted drives. The decryption process will take some time to complete. You can use the system normally while this is happening.
5. Device Encryption is now disabled and the lock icon is removed from the drive. From now on, you will no longer see the lock icon on drives in Windows 10.



Note : If you are using BitLocker, you must turn off BitLocker to remove the padlock icon.

You finished reading the article "**Why is there a lock icon on the drive and how to remove it?**" edited by the [TipsMake](#) team. We hope this article has provided you with many useful tech tips and tricks. You can search for similar articles on tips and guides. Thank you for reading and for following us regularly.

