

## Why is Mona Lisa always smiling? Expert: If you look backwards, you won't see it that way

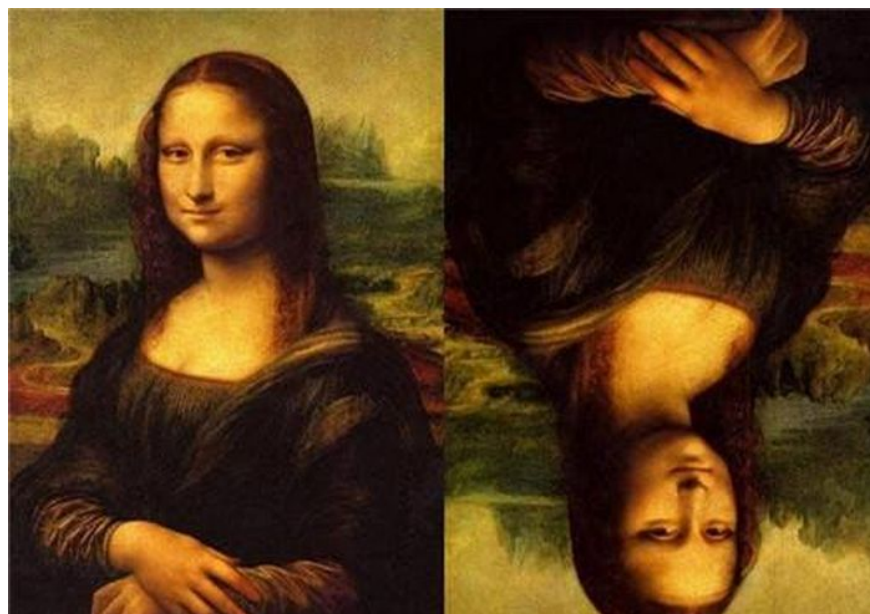
Mona Lisa is a work of Leonardo da Vinci during the Italian Renaissance and is currently collected at the Louvre Museum in France.

In fact, regarding the content of this painting, according to current mainstream views, the author wants to show the elegance and quietness of a woman, while the female protagonist seems to be a noble lady of high class. urban proletariat.

Leonardo da Vinci was the greatest genius of that era, combined with the Renaissance context, so people were very fascinated by this painting. When people observe, they quickly discover something strange about this painting, because the female protagonist of this painting seems to always be smiling no matter where, no matter when or where.

This is really remarkable, because theoretically things should change when viewed from different angles.

Looking at the painting, Mona Lisa is wearing a thin scarf and an expensive black dress. She half-smiled, her eyes stared at the person in front of her, the corners of her mouth were slightly raised, adding a lively look to her solemn appearance. Her plump round hands and folded hands also showed her kindness. appeared full of nobility.



This humble woman is the Mona Lisa. "Mona Lisa" is an excellent oil painting by Da Vinci. When viewers look at the oil painting, they can often feel that the woman in the painting is smiling, so this painting is also called

"Mona Lisa smiled." The magic of "Mona Lisa" is that from her pose and from the turquoise mountains and rivers behind, one can see her carefree life and longing for beautiful nature, which This will also bring comfort to the audience.

In mainland Europe, the Renaissance flourished in the 14th century, and this game of ideas lasted for more than three hundred years. "Mona Lisa" was a new force that broke out in an era of complexity and energy. move like that. One day in 1503, Da Vinci was painting in his studio when he received a letter from his father asking him to paint for a friend's wife. The customer was a wealthy silk merchant. He loved his wife Lisa so much that he came here to ask Leonardo da Vinci to paint Lisa.

Da Vinci received his reward and began to arrange the environment. He had a hunch that he would be painting for a long time. To make the models comfortable, he decorated the room with lots of flowers and invited a band to accompany the models. Sure enough, his hunch was right, and the painting was created within a year.

This is not the later "Mona Lisa", but its "Isleworth Mona Lisa" draft. She is different from Mona Lisa, her face is more youthful and energetic, and her smile can make people feel really happy. This may be a young girl who has just grown up, and she has not yet experienced the hardships of the world.

The young Mona Lisa was not favored by her owner, and Leonardo Da Vinci always felt like something was missing when looking at the finished oil painting. Thirteen years later, Da Vinci thought of Mona Lisa again. After contacting a wealthy merchant, he called Lisa, who had now become a woman, to his studio again and painted again.

This second painting is the "Mona Lisa", which is currently widely circulated. If you look closely, you can see that Mona Lisa has gradually matured over time, her iconic smile also has its own characteristics. small change. After careful observation, some psychological researchers discovered that Mona Lisa's smile contained not only happy emotions but also disgust, fear and anger. It is conceivable that Lisa's life over the years may not have been as expected, time has made her smile no longer pure.

Her smile is mixed with other emotions, and these emotions are what keep her smiling. When a person is trying to cover up other emotions in his heart, his face will show a calm state. So when people see that she always seems to be smiling, it's because her heart wants everyone to see her smile, even though Lisa may be really happy at that time, but to be able to smile completely To be more precise, she can only sacrifice a part of the feelings in her heart.

In addition, some researchers once tried to evaluate the upside down Mona Lisa painting. When they saw the eyes, their expressions changed clearly, these eyes did not have a smile and gentleness, they became pale. Sharp sword pierces people's hearts. Some scholars present even felt fear about the painting, claiming that the Mona Lisa possessed the power of a demon-like curse. The benevolent see benevolence, the wise see wisdom, perhaps fear is just a true reflection of human nature.

In fact, the smile in the painting "Mona Lisa" reflects the reality of the bourgeoisie during the European Renaissance. The reason Mona Lisa can smile so quietly is because she cannot be separated from her rich husband. and glorious position. Behind her smile lies the confidence and pride of the bourgeoisie.

The background of rivers and mountains in the background reflects the people of that time who loved nature and humanity, pursuing the revival of ancient Roman and Athenian culture. The original reason for the Renaissance was that the bourgeoisie resisted the church's control over people. During this period of history, people loved life and freedom, believed in science, and hated the church's didactic and cruel methods. As the leading figure of the Renaissance, many paintings of Leonardo da Vinci express this idea, such as "The Last Supper", famous

paintings such as "Mona Lisa".

Of course, there are many unanswered mysteries about Mona Lisa, such as there are animals hidden in the painting such as lions, buffaloes, orangutans, etc. For hundreds of years, people have still not been able to fully answer the question. this whole picture. Perhaps only the author Leonardo da Vinci knows how this painting was created and what profound meaning it represents.

"Life is precious, but love is more expensive, if for freedom, both can be thrown away." Even today, one can find many more discoverable qualities from the works of the Renaissance. The goal then is also the goal we are pursuing now.

You finished reading the article "**Why is Mona Lisa always smiling? Expert: If you look backwards, you won't see it that way**" edited by the [TipsMake](#) team. We hope this article has provided you with many useful tech tips and tricks. You can search for similar articles on tips and guides. Thank you for reading and for following us regularly.