

Why do rivers never flow in a straight line but like to twist?

Certainly, there is no river system in the world flowing in a straight line, of course, not to mention artificial rivers and lakes. If you suspect this, you can verify it with Google's Google Earth application.

Certainly, there is no river system in the world flowing in a straight line, of course, not to mention artificial rivers and lakes. If you suspect this, you can verify it with Google's Google Earth application. But why, the river does not choose a straight line, the shortest road that keeps winding continuously stretches for thousands of kilometers like that?

1. "Blood waterfall" in Antarctica, mysterious for hundreds of years has been decoded
2. Humans are not the only species with fingerprints



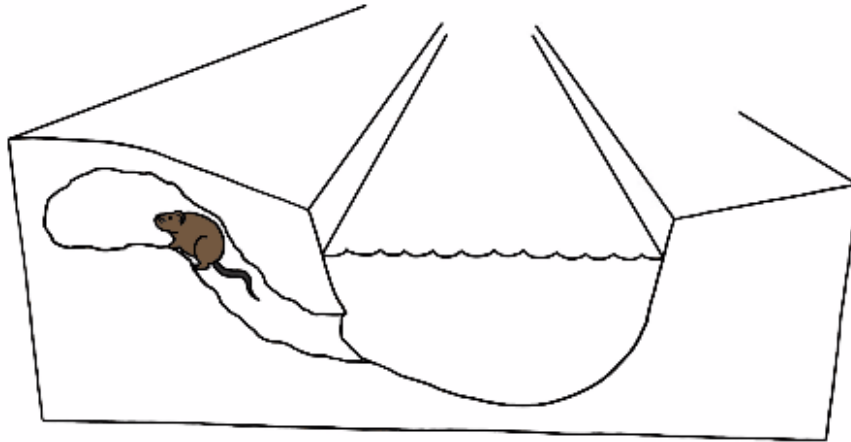
A river system in Alaska.

In fact, no river flows in a straight line, but they have to go through a long time to meander like that.

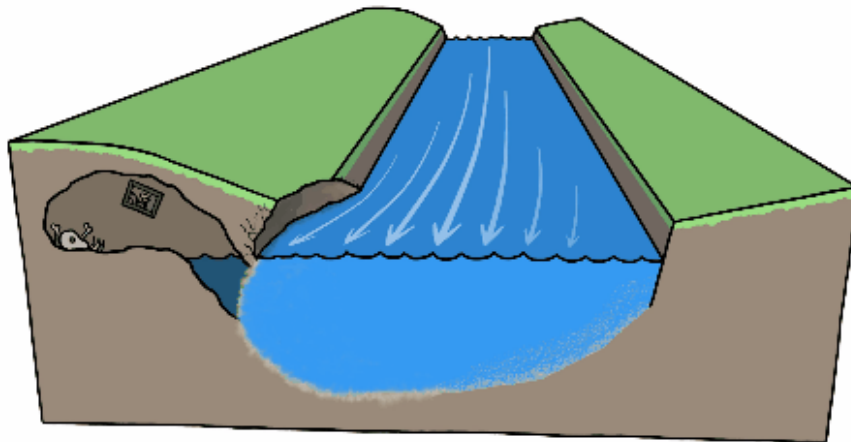
The cause of the phenomenon is that all rivers are winding from a combination of many elements in nature.

The following example will help us better visualize one of the reasons why rivers always bend without straightening.

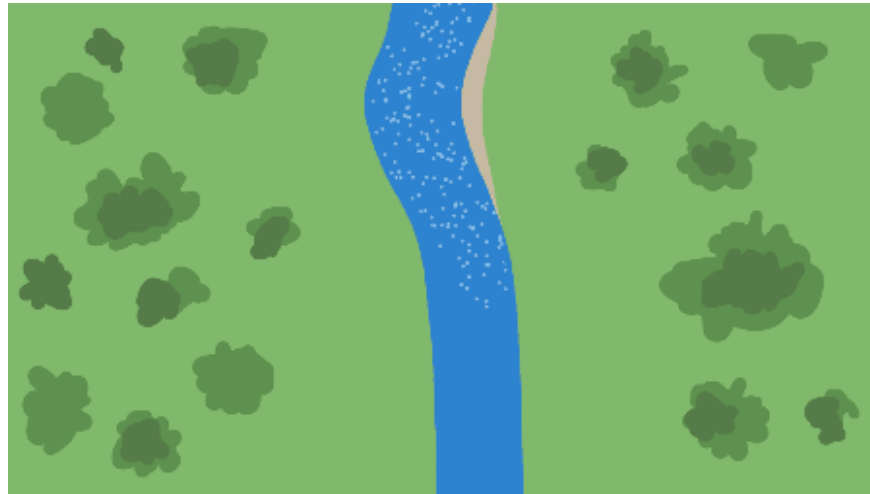
An otter family appeared and "gouged out" one side of the river to make a nest. It was just a small hole, but that was enough to make the soil on the river bank weaker.



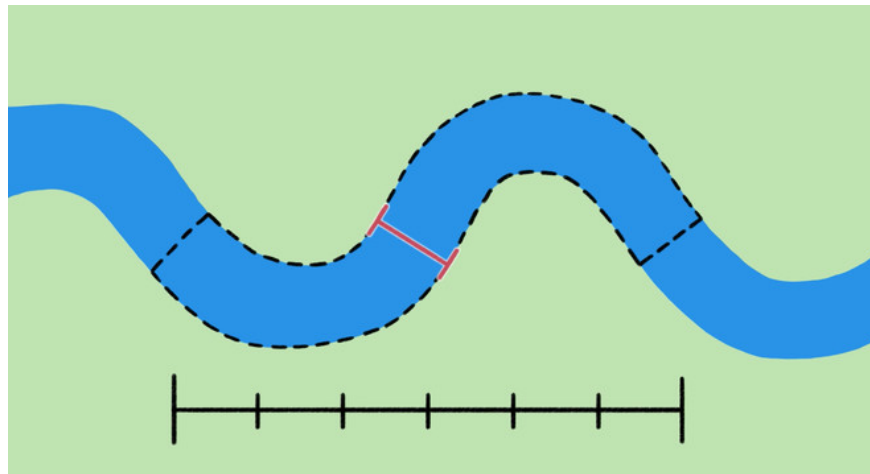
The water will flow into the hole with faster and faster speed due to the erosion of the soil layer, and at the same time weaken the flow of water on the remaining shore. The water carries sandy soil, accreting the remaining shore. For a long time, the straight river section will be turned into a curve.



In fact, there are many elements of nature that are enough to make a section of the river straight into curvature, not a single digger otter. When a section of the river has been bent, it means that the direction of the flow of water has also changed direction, a force is created that impacts the soil on the river bank, causing the erosion to increase, and then the rest is gradually curved. according to an indispensable rule.

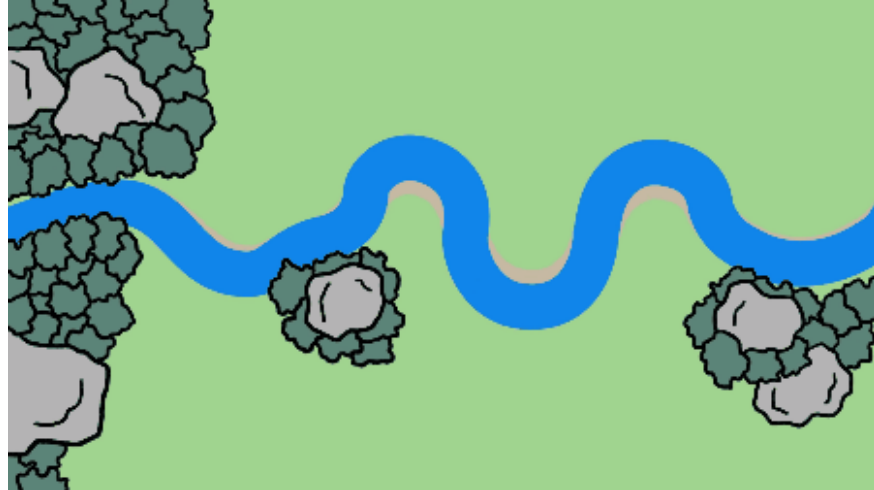


The truth is that the river flow is proportional to the length between the bends, the greater the flow, the longer the length. In particular, the length between an S-shaped bend will be 6 times the width of two river banks, meaning that a short river section will be like the miniature version of a larger river section.



The river section will be bent continuously over time. If you do not encounter obstacles (such as boulders, mountains .) then at some time the two winding sections of the river will touch each other to form a lake, of the type of horseshoe (West Lake in Hanoi is an example of horseshoe type). After that, the river will flow straight

again and the process of straightening into curvature literally continues.



The origin of the horseshoe pool.

You finished reading the article "**Why do rivers never flow in a straight line but like to twist?**" edited by the [TipsMake](#) team. We hope this article has provided you with many useful tech tips and tricks. You can search for similar articles on tips and guides. Thank you for reading and for following us regularly.