

When the laptop battery does not charge

Laptops (laptops) that do not eat electricity may be caused by a tight plug or battery contact point. Turn off the computer, unplug the power cord, remove the battery from the computer.

Batteries on non-rechargeable laptops can be caused by many simple, complex and complex reasons.

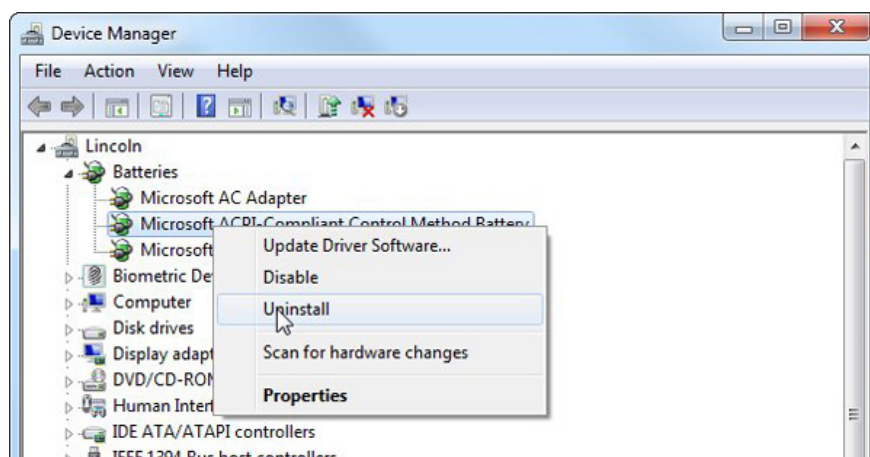
Let's start from simple causes and remedial steps.

Laptops (laptops) that do not eat electricity may be caused by a tight plug or battery contact point. Turn off the computer, unplug the power cord, remove the battery from the computer. Plug in the laptop again, open the phone. After booting up, turn off the device, unplug the power, reinsert the battery into the laptop. Plug in the power again, start the machine. Hope the battery will start charging.

If the battery still does not charge, the driver may be faulty. The next step, removing and reinstalling the driver, these operations can be quite complicated, but you don't have to worry, just follow the step-by-step instructions.

First, go to Device Manager. If you are using Windows XP, go to Start, right-click My Computer, select Properties. Select the Hardware tab, click the Device Manager button. If you use Vista or Windows 7, click Start, type 'device manager', press Enter.

In the Device Manager section, click on the + button for small batteries or arrows left of the Batteries section. Right-click on Microsoft ACPI-Compliant Control Method Battery and select Uninstall. Confirm you want to remove this driver. Note, you need to do the same things, avoid removing other drivers.



When the driver removal process is complete, select Action from the menu above, then click Scan for hardware changes. When the computer scan process is completed, Microsoft ACPI-Compliant Control Method Battery will reappear.

If after performing the above operations, the battery on the laptop still cannot charge, perhaps your battery is damaged.

Now you have only 3 options:

1. Buy a new battery. Please check the battery number and current carefully . to buy the right type of battery.
2. Do not use battery power, but use it directly from the power source, through the adapter.
3. Buy a new laptop.

You finished reading the article "**When the laptop battery does not charge**" edited by the [TipsMake](#) team. We hope this article has provided you with many useful tech tips and tricks. You can search for similar articles on tips and guides. Thank you for reading and for following us regularly.