

What to do when Windows can't find PowerShell?

PowerShell is a handy tool that allows you to automate tasks, fix various errors, and manage several Windows installations. But what if it suddenly disappears from your computer?

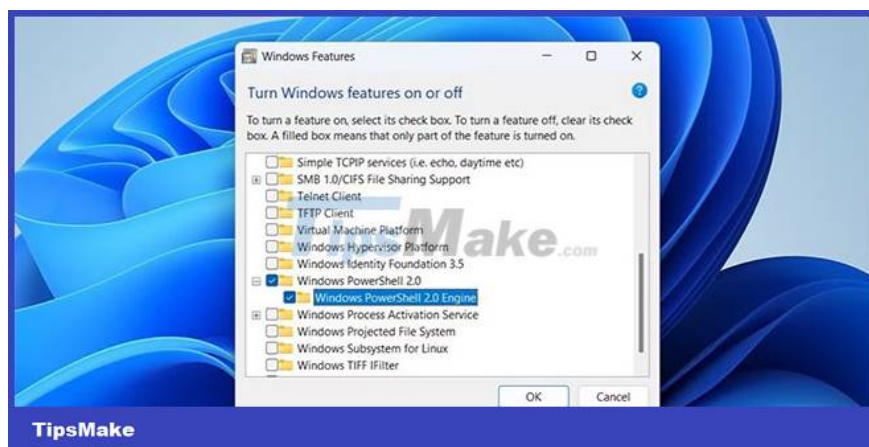
PowerShell is a handy tool that allows you to automate tasks, fix various errors, and manage several Windows installations. But what if it suddenly disappears from your computer?

If you use PowerShell regularly, the problem that Windows can't find it becomes a pain in the ass. Thankfully, it's possible to restore missing PowerShell with some troubleshooting tips. Detailed solution will be in the following article!

1. Make sure Windows PowerShell is enabled

On Windows, you can enable or disable optional features and programs from the Control Panel. To get started, you need to make sure that PowerShell is not disabled on your computer. Here's how to check.

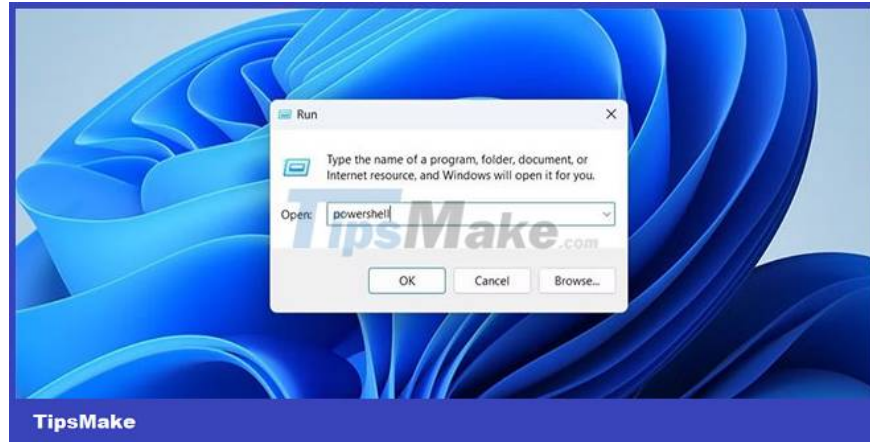
1. Press **Win + R** to open the Run dialog box.
2. Type control in the box and press **Enter** to open the Control Panel.
3. Click the drop-down menu in the top right corner to select **Large icons**.
4. Go to **Programs and Features** .
5. Click the **Turn Windows features on or off** link from the left pane.
6. When the User Account Control (UAC) prompt appears, select **Yes** to continue.
7. **In the Windows Features** dialog box , locate **Windows PowerShell** and select its check box.
8. Click **OK** to save the changes.



Restart your computer afterwards, and then try launching PowerShell using the search menu.

2. Launch PowerShell with Run or File Explorer

If you can't open PowerShell via the Search menu, you can try using the Run dialog box. Press **Win + R** to open the Run dialog box. Type **powershell** in the box and press **Enter**. If you want to launch PowerShell with admin rights, press **Ctrl + Shift + Enter**.

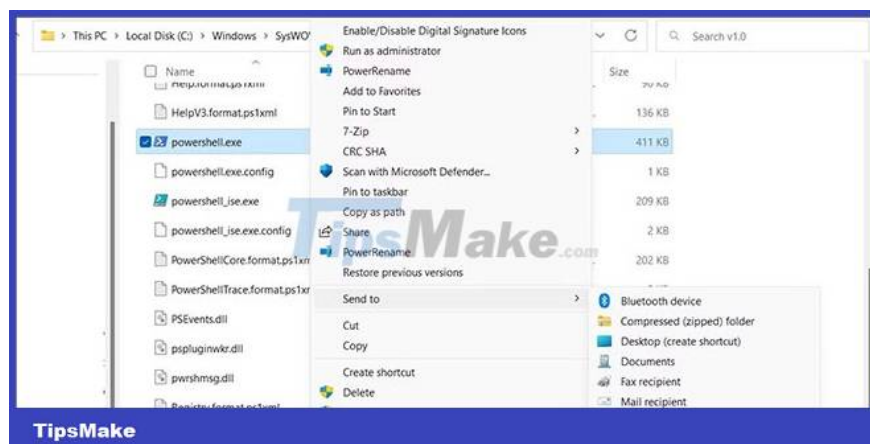


You can also open PowerShell from the File Explorer address bar. To do so, press **Win + E** to open File Explorer. Type **PowerShell** in the address bar and press **Enter**.

3. Create a desktop shortcut for PowerShell

Windows may not be able to open PowerShell without knowing the correct path to the PowerShell executable. If that's the case, you can manually locate the PowerShell executable on your computer and create a desktop shortcut to it. Here are the steps to take.

1. Right-click the Start icon to open the Power User menu and select **File Explorer** from the list.
2. Navigate to **This PC**.
3. Go to **C: > Windows > SysWOW64** and find the WindowsPowerShell folder.
4. Open the WindowsPowerShell folder and go to the **v1.0** folder.
5. Double click on the PowerShell executable and see if it works. If it is, right-click it and select **Send to > Desktop (create shortcut)**.



You can then use the newly created desktop shortcut to launch PowerShell. For more convenience, you can assign keyboard shortcuts to PowerShell.

4. Scan your computer for corrupted system files



Corrupt or problematic system files can also interfere with Windows operation and prevent PowerShell from launching. Fortunately, your Windows PC comes with a few built-in tools, such as SFC (System File Checker) and DISM (Deployment Image Servicing and Management) that can help you with such problems. If Windows has corrupted system files, running these tools will fix the problem.

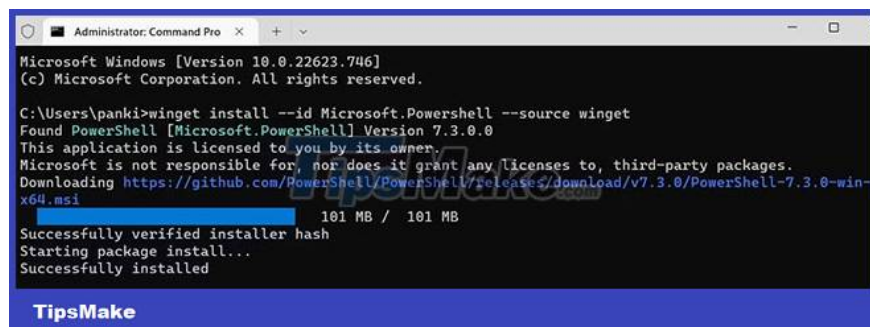
5. Update Windows PowerShell

If Windows still can't find PowerShell at this point, there may be a problem with the PowerShell application itself. You could try updating the PowerShell app to see if that makes any difference.

To update PowerShell on Windows:

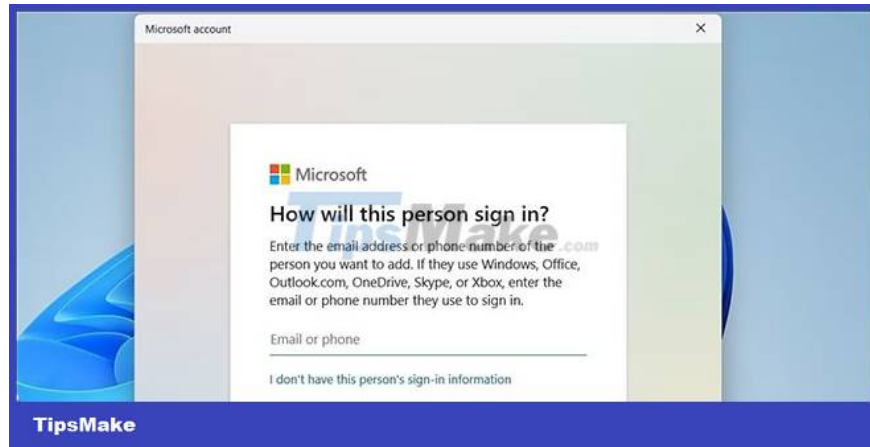
1. Press **Win + X** to open the Power User menu.
2. Select **Terminal (Admin)** from the list.
3. When the User Account Control (UAC) prompt appears, select **Yes**.
4. Type the following command and press **Enter**.

```
winget install --id Microsoft.PowerShell --source winget
```



Windows will download and install the latest version of PowerShell. You will then be able to access PowerShell.

6. Create a new user account



Maybe the issue of not opening PowerShell is limited to your current user account. In that case you can create and switch to a new user account and see if this works.

You finished reading the article "**What to do when Windows can't find PowerShell?**" edited by the [TipsMake](#) team. We hope this article has provided you with many useful tech tips and tricks. You can search for similar articles on tips and guides. Thank you for reading and for following us regularly.