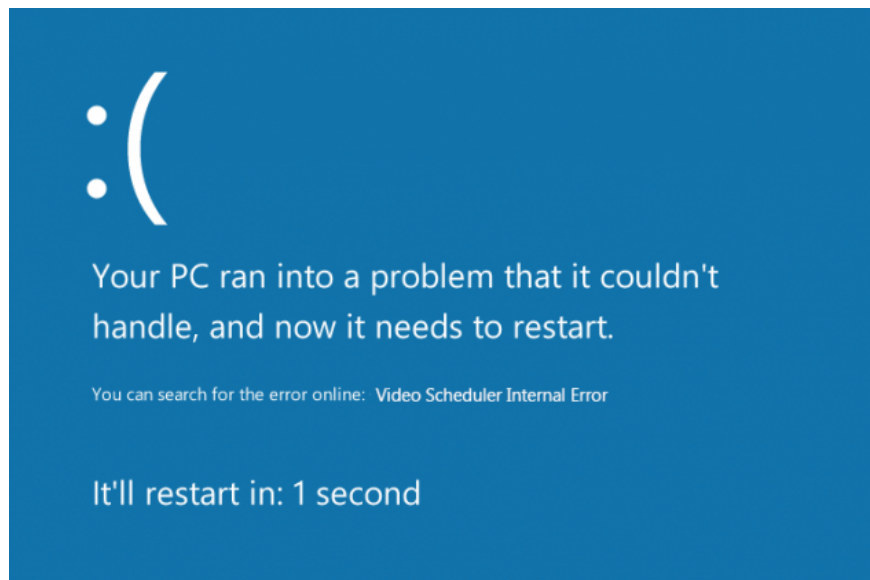


What to do when having errors Video Scheduler Internal Error?

Video_Scheduler_Internal_Error is also a deadly blue screen error, which usually happens on Windows 10 and Windows 8.1. The cause of this error is usually related to the driver. Often errors Video Scheduler Internal Error may appear after your computer starts or after you set up your computer in sleep mode (sleep mode) and turn on the computer.

Video_Scheduler_Internal_Error is also a deadly blue screen error, which usually happens on Windows 10 and Windows 8.1. The cause of this error is usually related to the driver. Often errors Video Scheduler Internal Error may appear after your computer starts or after you set up your computer in sleep mode (sleep mode) and turn on the computer.

Just like other BSOD errors, when you encounter this error your computer will also display error messages and blue screens, and automatically restart the computer. In the article below, Network Administrator will guide you to some solutions to fix this error.



1. A sign that identifies the Video_Scheduler_Internal_Error error

Signs that identify the Video_Scheduler_Internal_Error are similar to BSOD errors:

- Suddenly on the computer screen displays the BSOD error code and restarts the computer.

- During the game you may encounter this error.
- Your computer may be suspended at any time.
- Computer performance is getting slower and slower.

2. Causes of errors

The cause of the error may be due to:

- Video driver is corrupted or broken.
- Windows system file error.
- Virus or malware (malware) attack.
- Windows Registry error.
- 3rd party security software error caused.

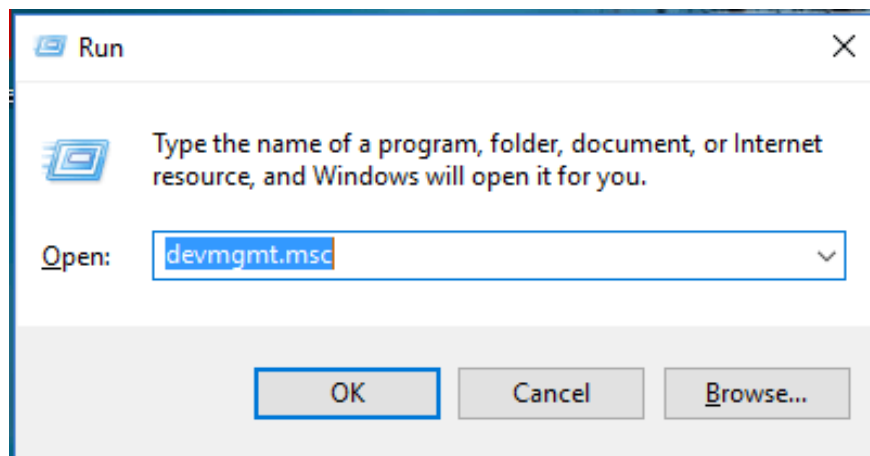
3. Solutions to overcome errors

To fix the error you can apply some solutions below:

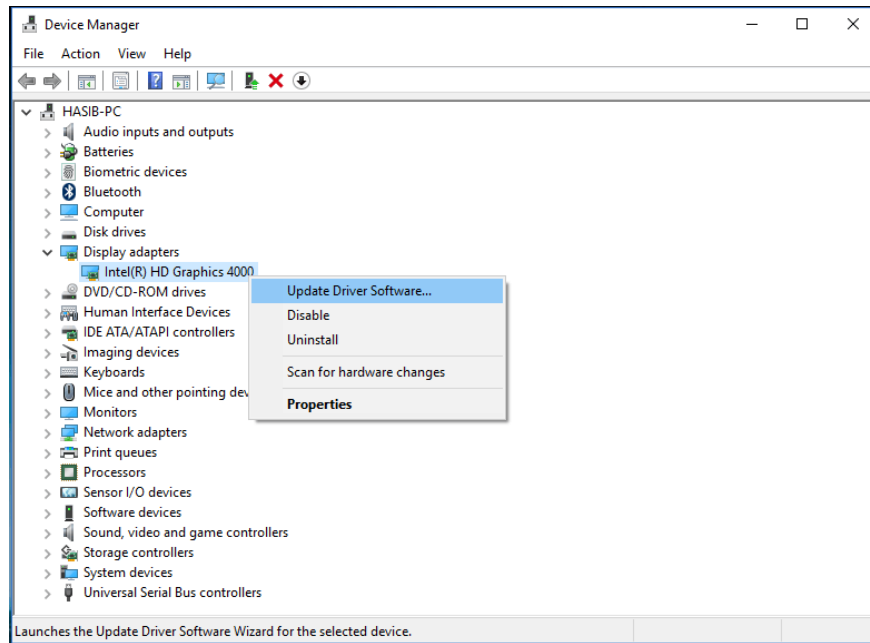
3.1. Update or roll back video driver

To update (update) the video driver, follow the steps below:

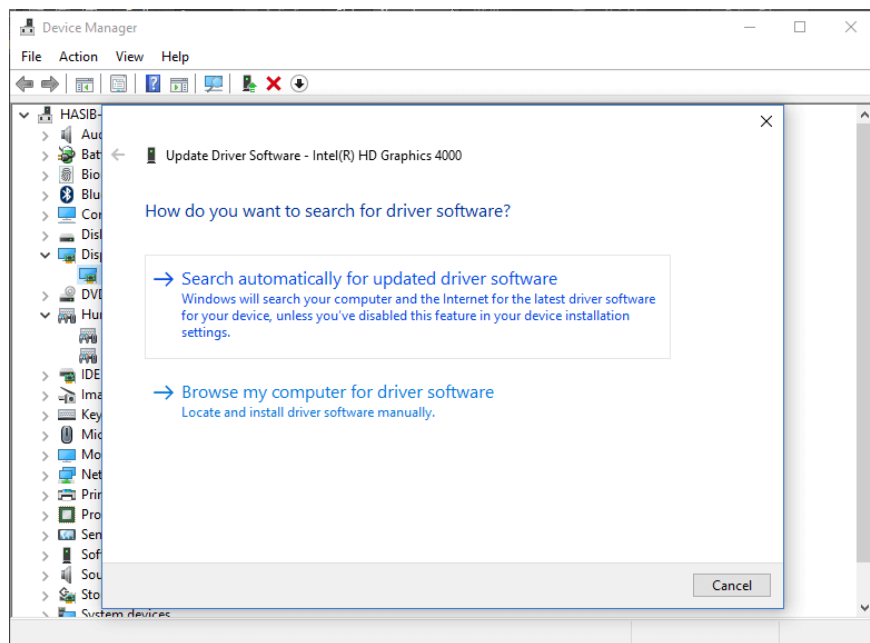
- First press **Windows + R** key combination to open the Run command window.



- On the Run command window, enter **devmgmt.msc** there and press Enter to open the Device Manager window.
- Now on the screen you will see a list of all drivers on your computer.



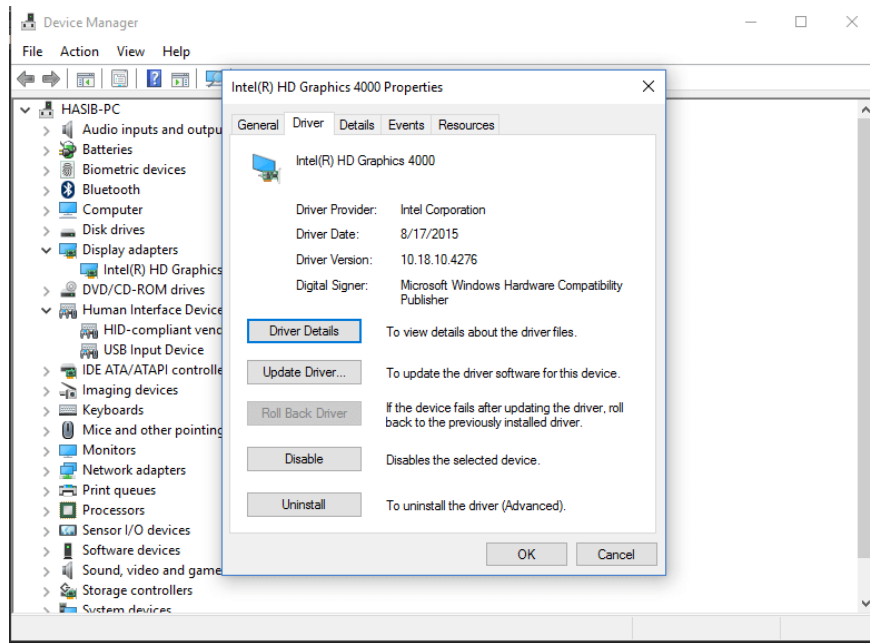
- Your mission is to expand **Display Adapters** .
- Right-click the video driver and select **update driver**.



- Select Next **Search automatically for update driver software** .
- And it will automatically update (update) the driver on your computer.

If you want to roolback the video driver, follow the steps below:

- Double click on the video driver in the Device manager window.



- Click the **Driver tab**.

- Then click **Rollback**.

3.2. Disable or uninstall security software

Some security software may cause BSOD errors. Such as programs, antivirus software. Therefore, to fix the error, you can apply a solution to disable or even uninstall antivirus programs on your computer, then restart the computer and check for errors. still or not.

3.3. Update the operating system and driver

Solution update (update) driver can support you to overcome many errors on the system, including Video Scheduler Internal Error. To fix Video Scheduler Internal Error, you can check for the latest updates and update (update).

3.4. Fix Registry errors

As mentioned above, the cause of Video Scheduler Internal Error may be due to a Windows Registry error. And often it is also the cause of the blue screen of death errors. So you can run the Registry and fix the errors. To do this you can rely on the support of the 3rd application. The most reliable application you can use here is CCleaner.

Download CCleaner and install it here.

3.5. Fix broken system files

If the system files are corrupted, you will probably face many errors, including BSOD errors. So checking, detecting and fixing corrupted system files can help you fix Video Scheduler Internal Error.

Readers can refer to the steps to check and fix the corrupted system files on Windows computers [here](#).

Refer to some of the following articles:

1. Windows Explorer error repeatedly restarts and crashes, this is how to fix it
1. Error 0x80245006 during Windows 7, 8 and 10 update, this is how to fix the problem
1. Quick fix 'All files converted to .lnk files'

Good luck!

You finished reading the article "**What to do when having errors Video Scheduler Internal Error?**" edited by the [TipsMake](#) team. We hope this article has provided you with many useful tech tips and tricks. You can search for similar articles on tips and guides. Thank you for reading and for following us regularly.