

What is Windows iSCSI Initiator? How to access this tool?

Microsoft iSCSI Initiator is a tool that allows you to connect your host PC to an external iSCSI-based storage array. It manages iSCSI sessions on your computer and remote iSCSI target devices.

iSCSI (internet Small Computer Systems Interface) is an Internet Protocol-based storage networking tool that helps link data storage devices. It can be used to transfer data over a local area network (LAN), wide area network (WAN) or the Internet.

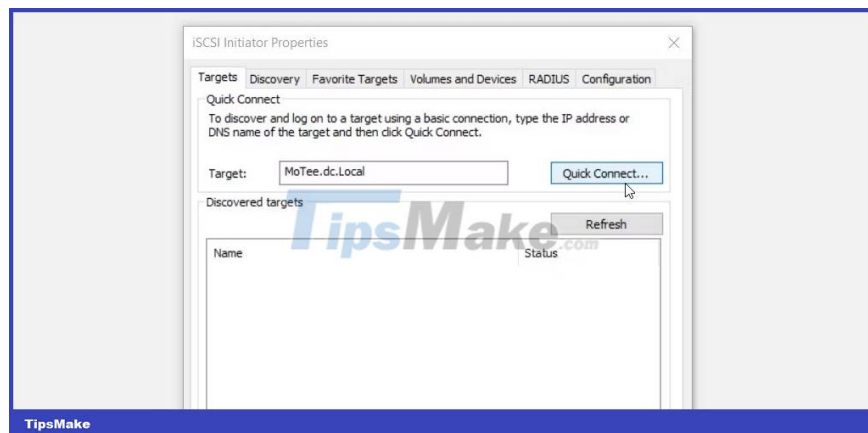
Meanwhile, Microsoft iSCSI Initiator is a tool that allows you to connect your host PC to an external iSCSI-based storage array. It manages iSCSI sessions on your computer and remote iSCSI target devices.

Let's see how you can configure this tool. From there, we'll explore different ways to access it.

How to configure iSCSI Initiator

Here are the steps to set up iSCSI Initiator:

1. Type **iSCSI Initiator** into the Start menu search bar and select **Best match**.
2. Navigate to the **Targets** tab.
3. Enter the IP address or DNS name of the iSCSI target device in the **Target box**.
4. Click the **Quick Connect button**.

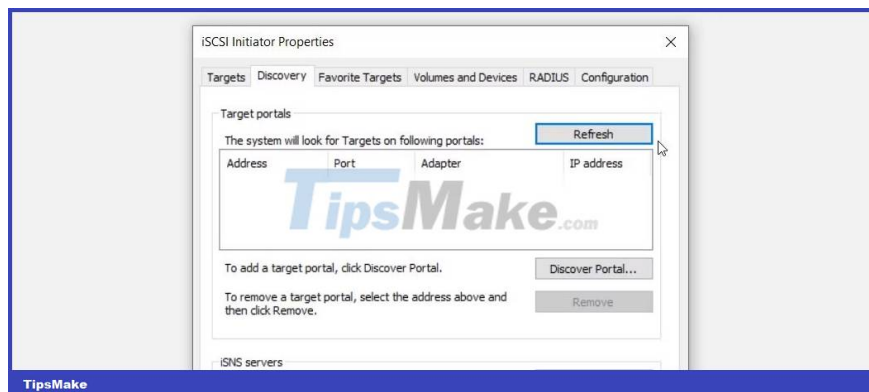


At this point, your iSCSI target device will be added to the **Discovered targets** box . Press the **Done** button to continue.

If any iSCSI target devices cannot be found, navigate to the **Favorite Targets** tab and check if you can find something.

If not, follow these steps:

1. Navigate to the **Discovery tab**.
2. Click the **Refresh button**. This will allow your device to search for iSCSI targets on all target ports.



If you still cannot find the iSCSI targets, click the **Discover Portal** button and then add a target portal. From there, click the **Refresh** button again to search for iSCSI target devices.

After adding your target device, you will be able to handle all iSCSI sessions from your PC using iSCSI Initiator. To get started, simply explore all the options that appear on the **Volumes and Devices** tab .

Next, let's also see the different ways to access iSCSI Initiator.

How to access iSCSI Initiator

1. Open iSCSI Initiator with the Run dialog box

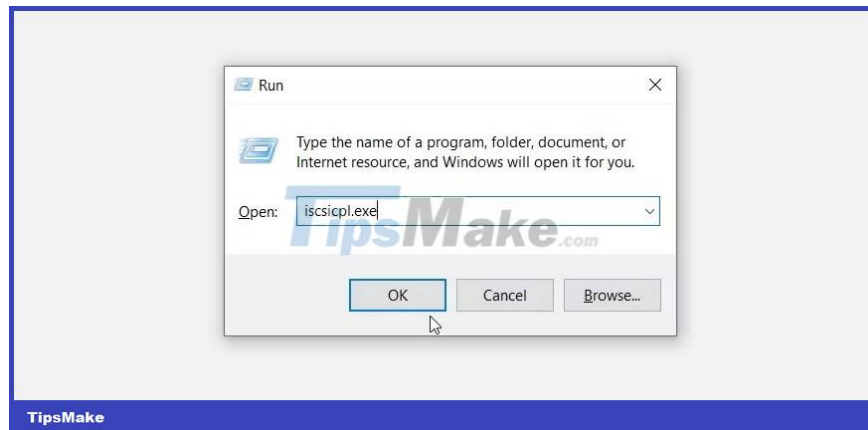


You've discovered how to open iSCSI Initiator using the Start menu search bar. Now, the article will show you how to access this tool using the Run command dialog box.

Interestingly, you can also access third-party programs using the Run command dialog. But first you need to edit some Registry keys.

Now, here's how to open iSCSI Initiator with the Run command dialog:

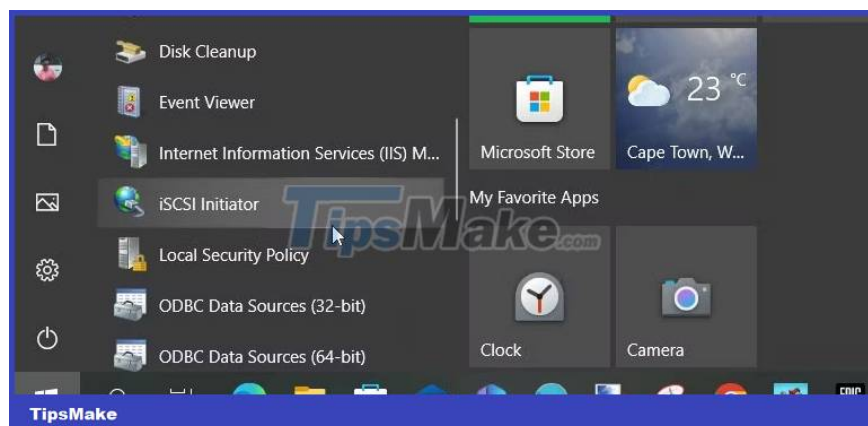
1. Press **Win + R** to .
2. Type **iscsicpl.exe** and press **Enter** to open iSCSI Initiator.



2. Open iSCSI Initiator using the Start menu

The Start menu is another amazing tool that makes it easy to access your apps. So here's how you can use it to access iSCSI Initiator:

1. Press the Windows key to access the Start menu. Or, click the Start menu icon on the taskbar.
2. **Select the Windows Administrative Tools** folder from the menu items on the left.
3. Click the **iSCSI Initiator** option.

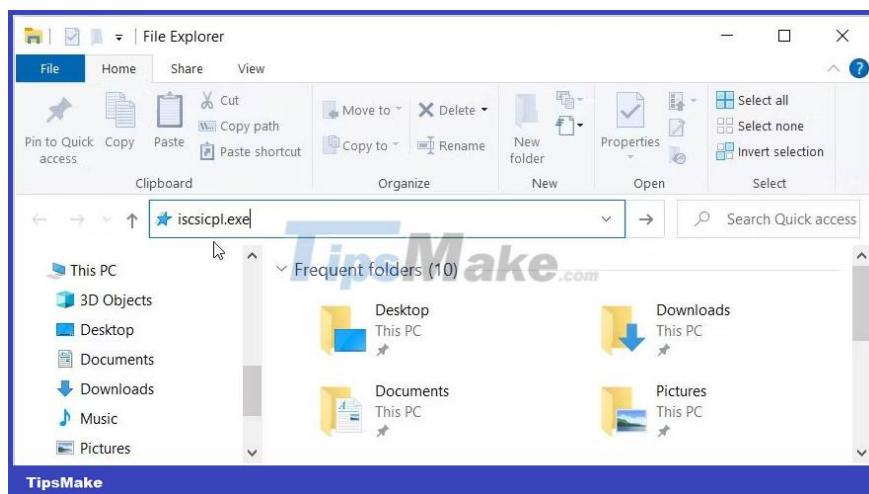


3. Open iSCSI Initiator with the File Explorer address bar

You probably know that you can locate your file and folder paths in the File Explorer address bar. In addition, this tool can also help you access almost any application on your device.

Here's how to open iSCSI Initiator using the File Explorer address bar:

1. Press **Win + E** to .
2. Type **iscsicpl.exe** in File Explorer's address bar and press Enter.



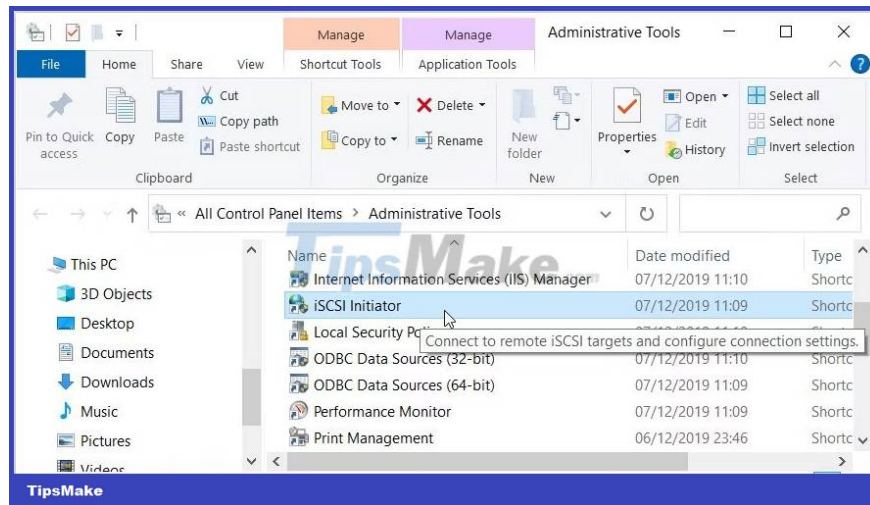
4. Open iSCSI Initiator with Control Panel

Have you used the Control Panel before? This is a great tool to help you troubleshoot your PC or configure some system settings.

But that's not all! This tool can also help you access different programs on your Windows device.

Let's see how you can access iSCSI Initiator using the Control Panel:

1. Type **Control Panel** into the Start menu search bar and select the best match.
2. Click **the View by drop-down menu and select the Large icons** or Small icons option .
3. Select **Administrative Tools** from the list.
4. Click the **iSCSI Initiator** option.

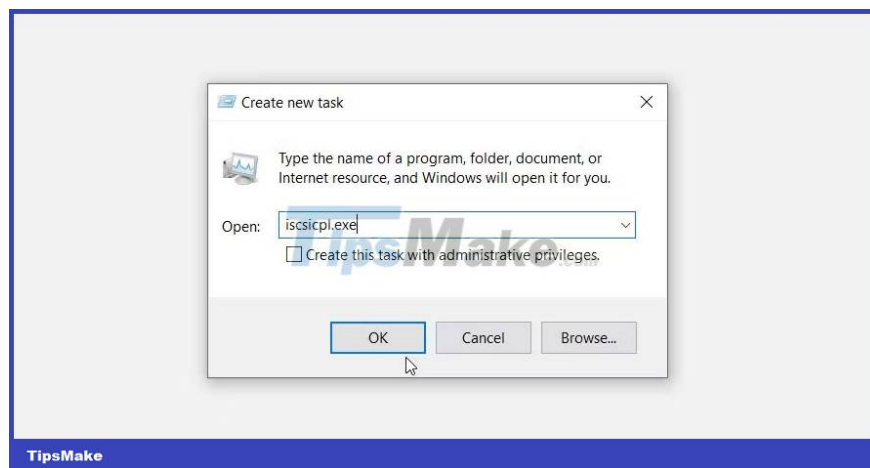


5. Open iSCSI Initiator with Task Manager

You can force close your Windows programs using Task Manager. But besides that, this tool can also help you to access your apps.

So let's discover how you can open iSCSI Initiator using Task Manager:

1. Type **Task Manager** in the Start menu search bar and select the best match.
2. Click the **Files** tab in the top left corner.
3. **Select the Run new task** option .
4. Type **iscsicpl.exe** in the search box and press **OK** to open iSCSI Initiator.



6. Open iSCSI Initiator with Command Prompt or PowerShell

Now let's see how to access iSCSI Initiator using Command Prompt and PowerShell.

Let's start with the Command Prompt:

1. Type **Command Prompt** in the search bar in the Start menu.
2. Right click on the **Command Prompt** result and select **Run as administrator** .
3. Type the following command and press **Enter** to open iSCSI Initiator:

iscsicpl.exe

Now, let's discover how to open iSCSI Initiator using PowerShell:

1. Type **Windows PowerShell** into the Start menu search bar.
2. Right click on the **Windows PowerShell** result and select **Run as administrator** .
3. Type the following command and press **Enter** to open iSCSI Initiator:

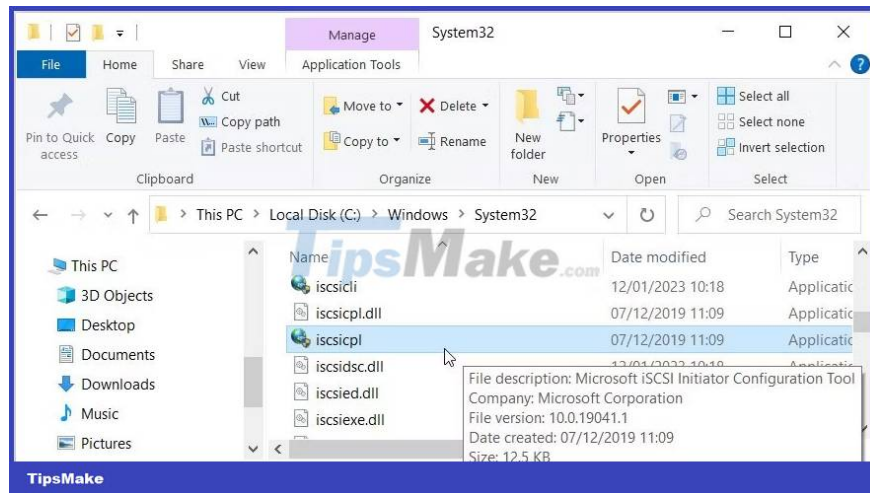
iscsicpl.exe

7. Search for iSCSI Initiator in the System32 . folder

You can also access iSCSI Initiator by double-clicking the relevant option in the Windows System32 folder.

Here are the steps you need to follow:

1. Press **Win + E** to open File Explorer.
2. Select **This PC** on the left.
3. **Double-click the Local Disk (C:)** option on the right.
4. Open the Windows folder .
5. Scroll down and open the System32 folder .
6. **Double click iscsicpl** option to open iSCSI Initiator.

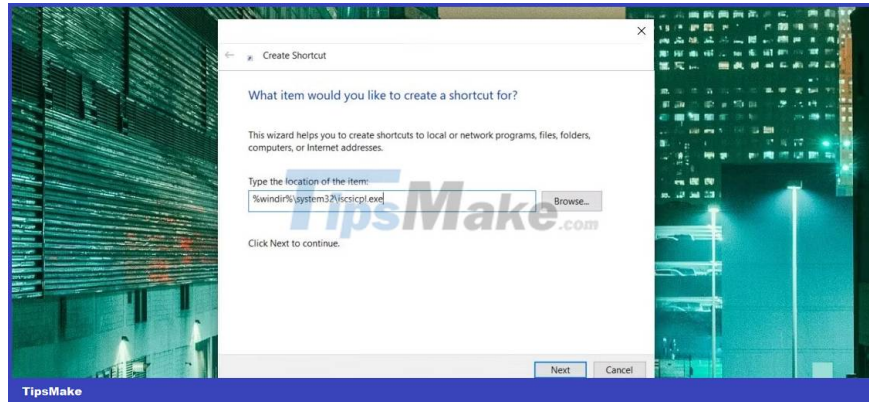


If you want to make things easier, just pin the iSCSI Initiator to the taskbar. To do that, right click on **iscsicpl** option and select **Pin to taskbar** .

8. Use desktop shortcuts

Windows desktop shortcuts help you access your applications easily. So, let's see how to create a desktop shortcut for iSCSI Initiator:

1. Press **Win + D** to access the Windows desktop. Also, see .
2. Once you're on the desktop, right-click an empty space and select **New > Shortcut** .
3. Type **%windir%system32iscsicpl.exe** in the location box.
4. Click **Next** to continue.



Enter iSCSI Initiator in the **Name** box and then click the **Finish** button. From there, you'll easily access the tool with a desktop shortcut.

You finished reading the article "**What is Windows iSCSI Initiator? How to access this tool?**" edited by the [TipsMake](#) team. We hope this article has provided you with many useful tech tips and tricks. You can search for similar articles on tips and guides. Thank you for reading and for following us regularly.
