

What is Windows Hello? How does Windows Hello work? How to install Windows Hello

Windows Hello is a feature that helps sign in to Windows 10 devices with just one look or one touch without having to enter a password.

Windows Hello is Microsoft's biometric security feature that uses facial recognition and fingerprint or PIN to help you easily sign in to Windows 10 devices. Here's how Windows Hello works and how it works. can improve your Microsoft account security.

Note: The instructions in this article apply to Windows 10.

What is Windows Hello and how does it work?

With Windows Hello, you can sign in to another Windows 10 computer or device 3x faster than using a password. While you can create and keep a PIN as a backup, Windows 10 has many ways to recognize you and give you instant access to your system.

Windows Hello uses biometrics to identify and authenticate users. The biometric function analyzes and measures a user's specific, specific characteristics as an extremely secure way to identify someone. For example, there are no twins with identical fingerprints. Microsoft Hello technology uses these distinct characteristics to authenticate users.

Windows Hello Face / Fingerprint / PIN options

Windows 10 offers 6 different login methods, including 3 Windows Hello options, they are:

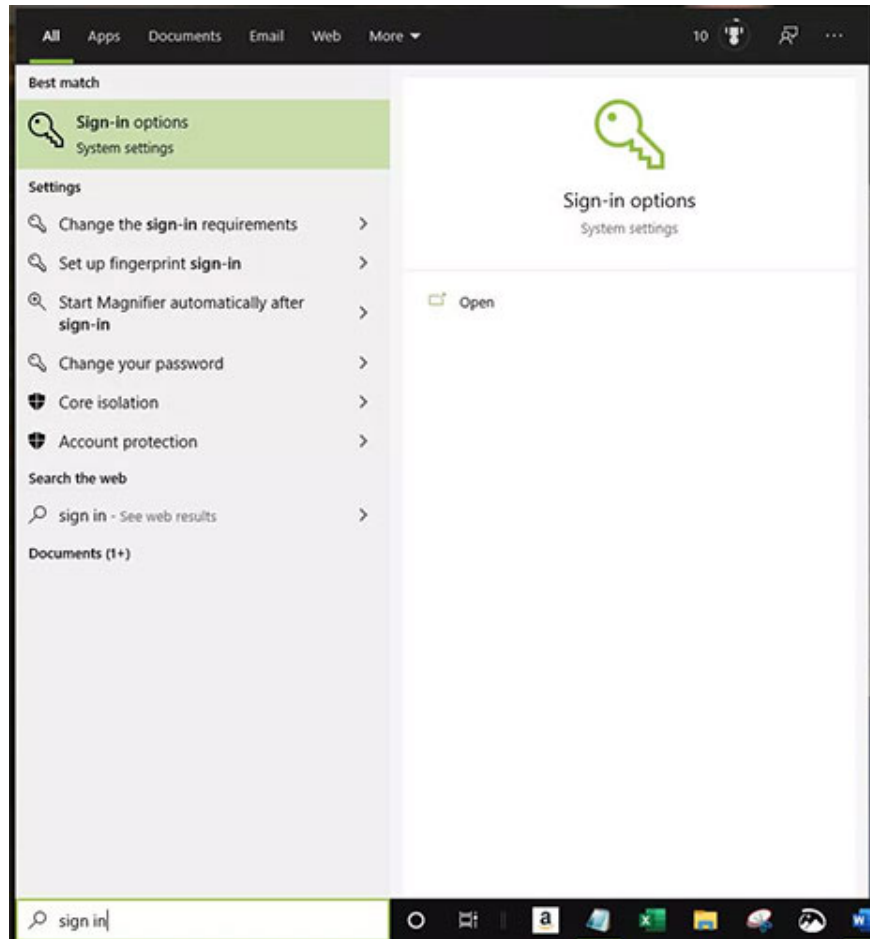
1. Windows Hello Face: Uses a camera specially configured to authenticate and unlock Windows devices.
2. Windows Hello Fingerprint: Scan your fingerprints.
3. Windows Hello PIN: An alternative password is attached to the device.

With the Windows Hello Face and Windows Hello Fingerprint options, make tech easier with 2 detailed setup tutorials. Readers please refer to:

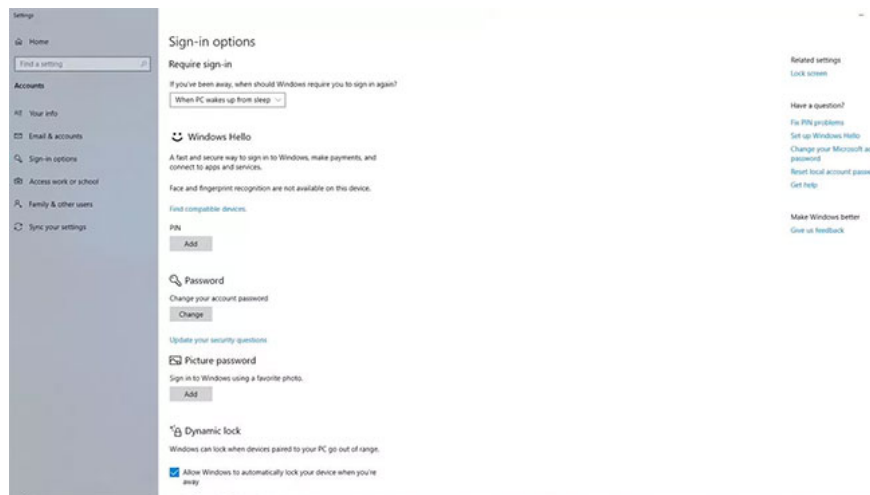
1. How to log into Windows 10 with fingerprint
2. Instructions to set up Windows Hello to recognize faces on Windows 10

With the Windows Hello PIN option, the PIN you create provides a secure backup login option. This is also a safe and fast option if Windows Hello Face and Windows Hello Fingerprint are not available on the computer.

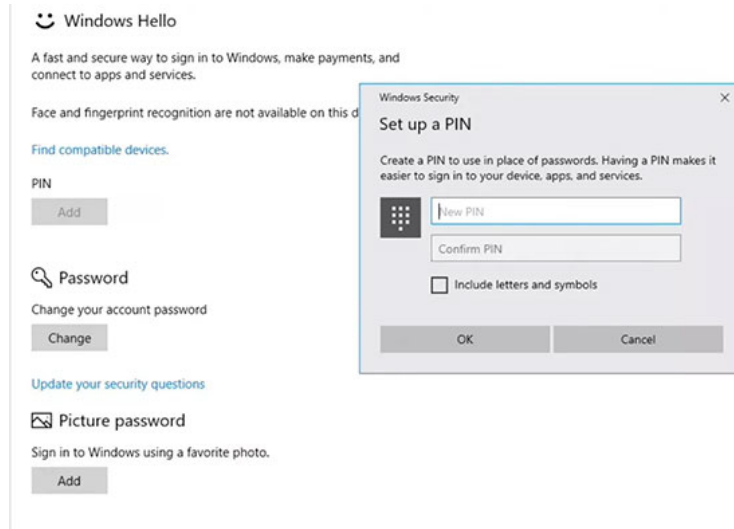
1. Enter sign in in the Windows search box and select Open under Set Up Sign-in Options.



2. Under PIN, select Add.



3. Confirm your account password if prompted. Enter and confirm the PIN you want to use, then select OK.



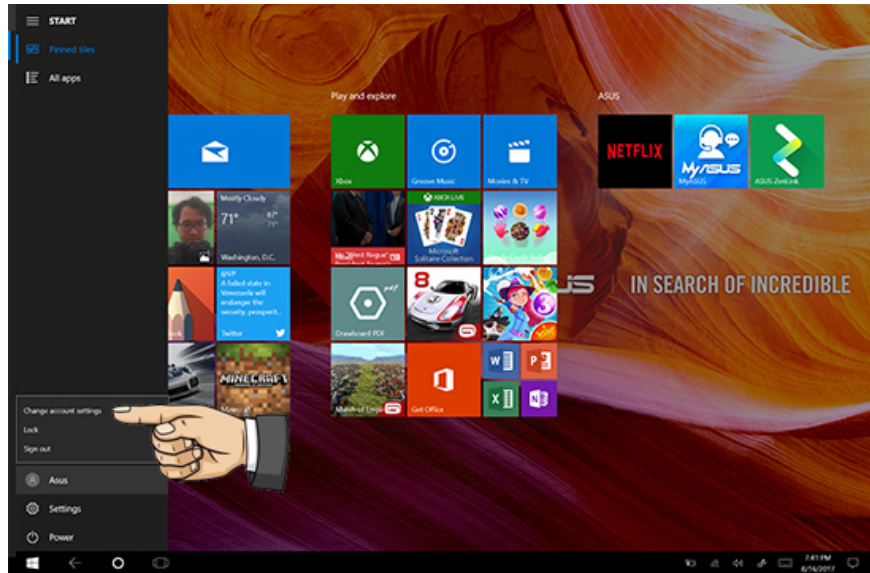
How to activate Windows Hello

Sign in with your Microsoft account.

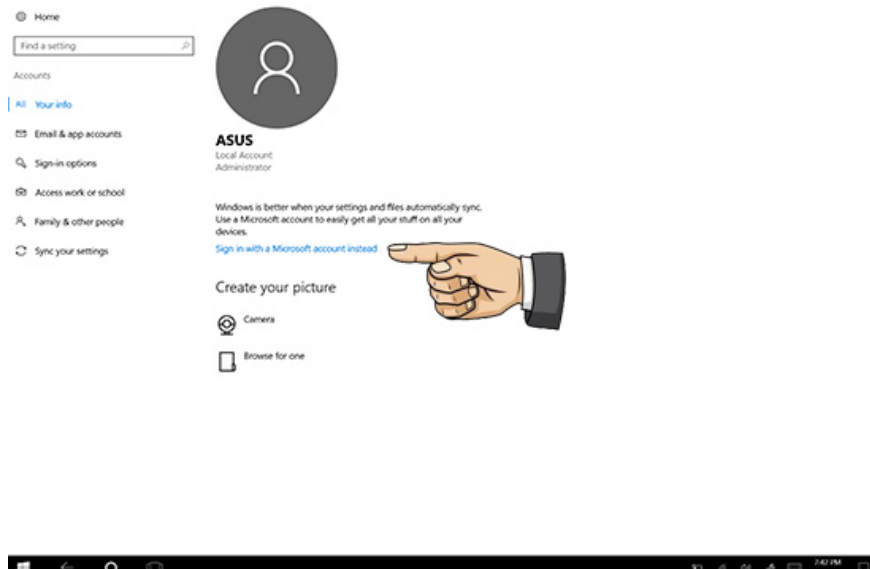
Step 1: Start > User.



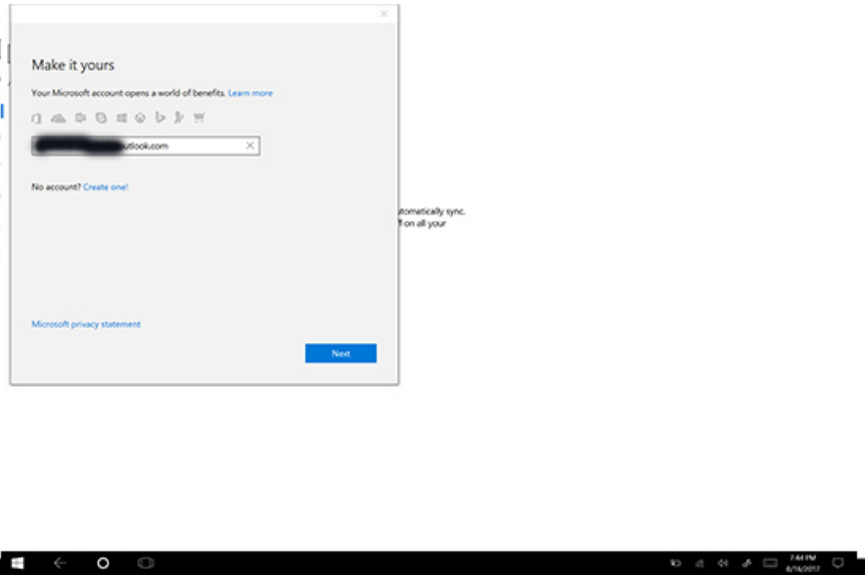
Step 2: Change account settings.



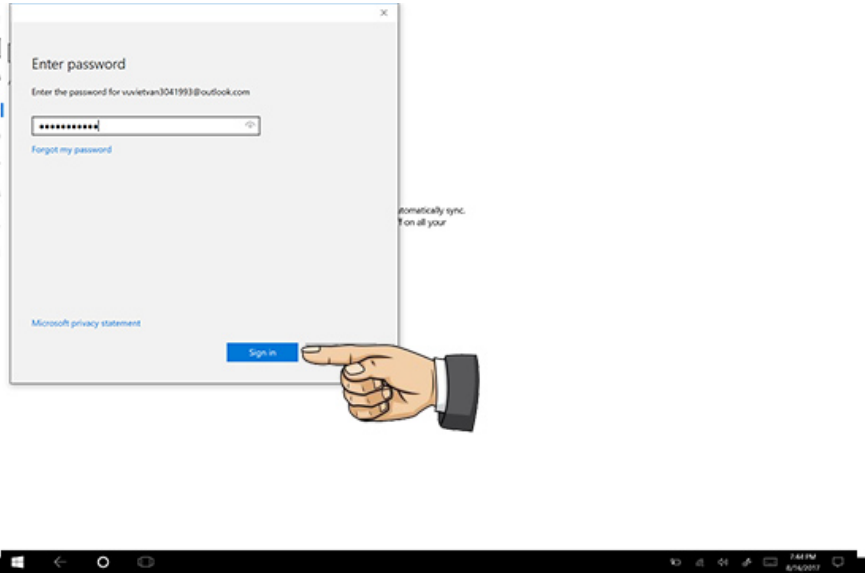
Step 3: Sign in with a Microsoft account instead.



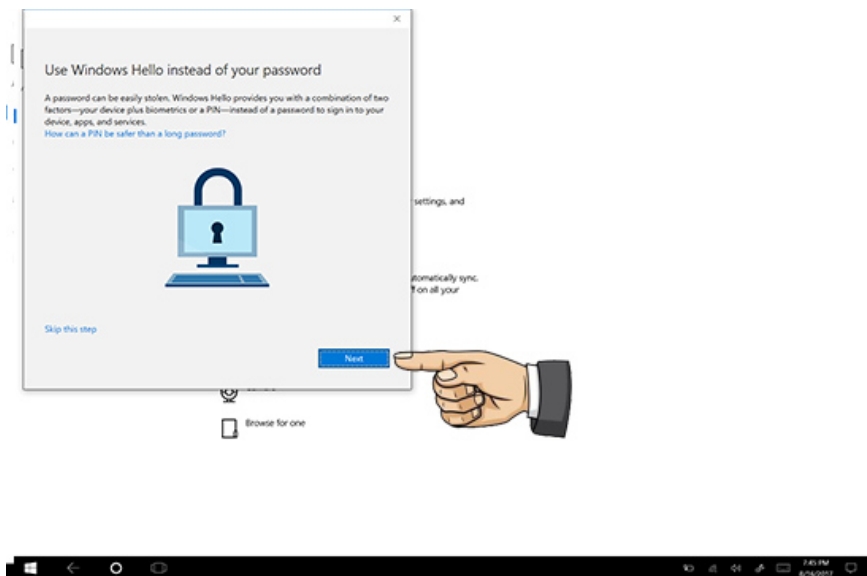
Step 4: Login to your username "Next".



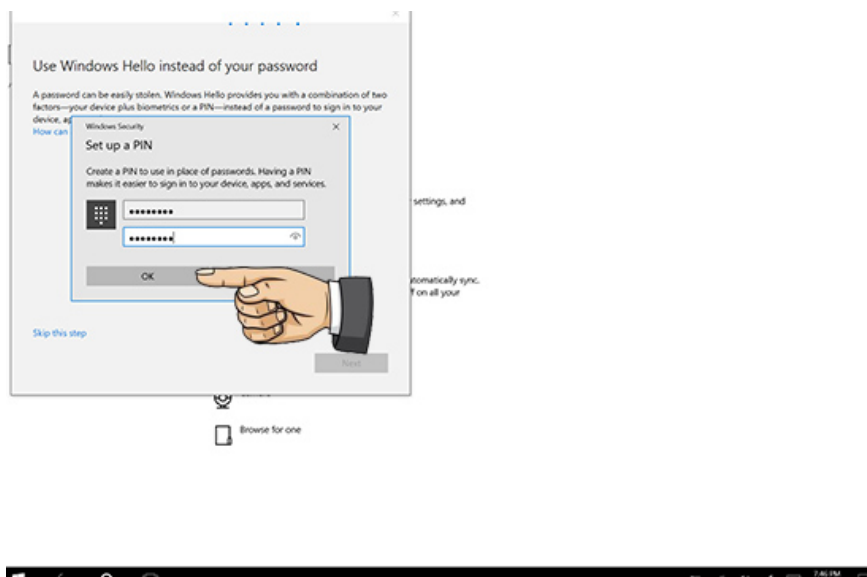
Step 5: Enter your account password > "Sign in".



Step 6: Next.

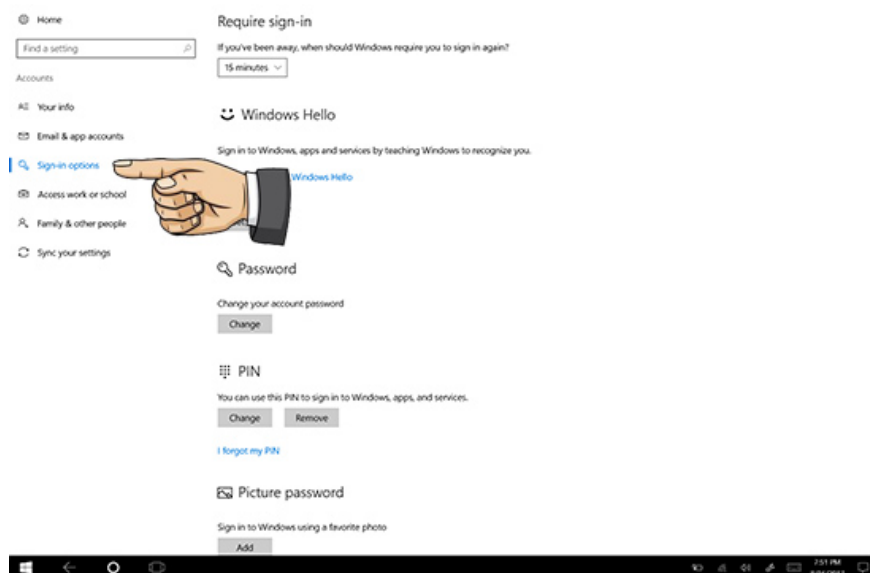


Step 7: Enter the password and confirm the password> OK.

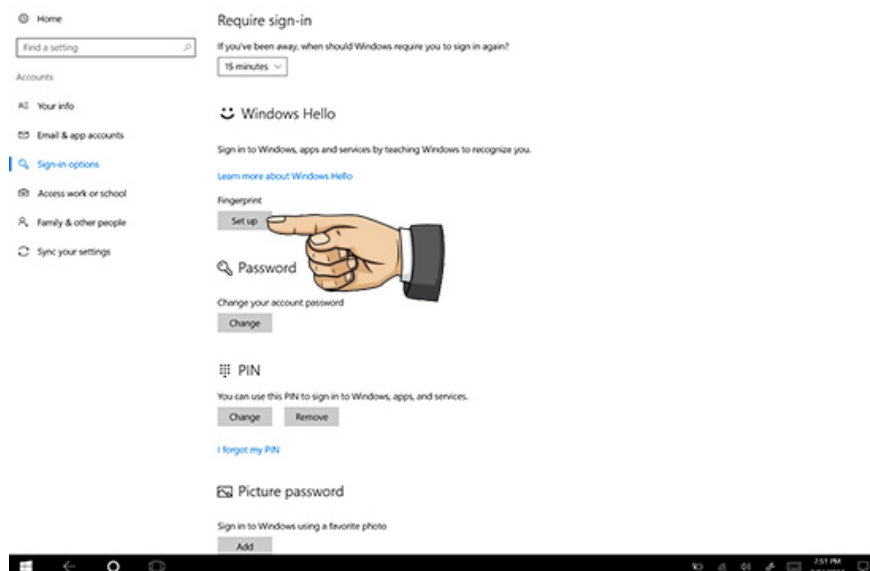


How to set up Windows Hello

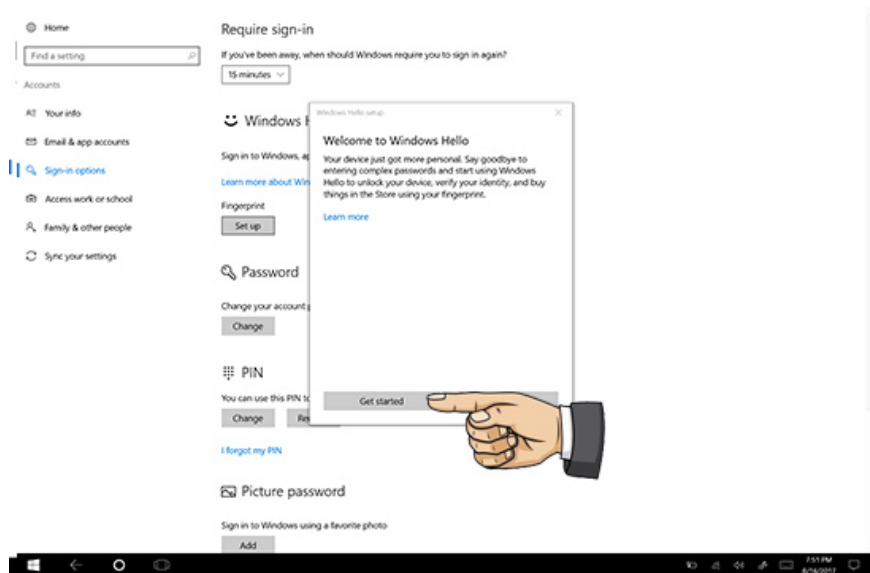
Step 1: After logging into Microsoft account> Sign-in Options.



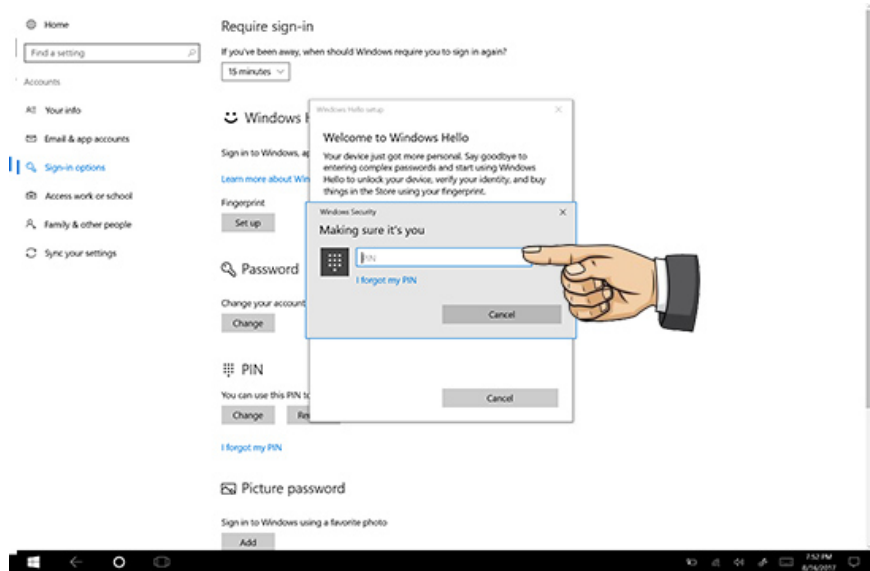
Step 2: Set up fingerprints or face scanning depending on the device supports> Set Up.



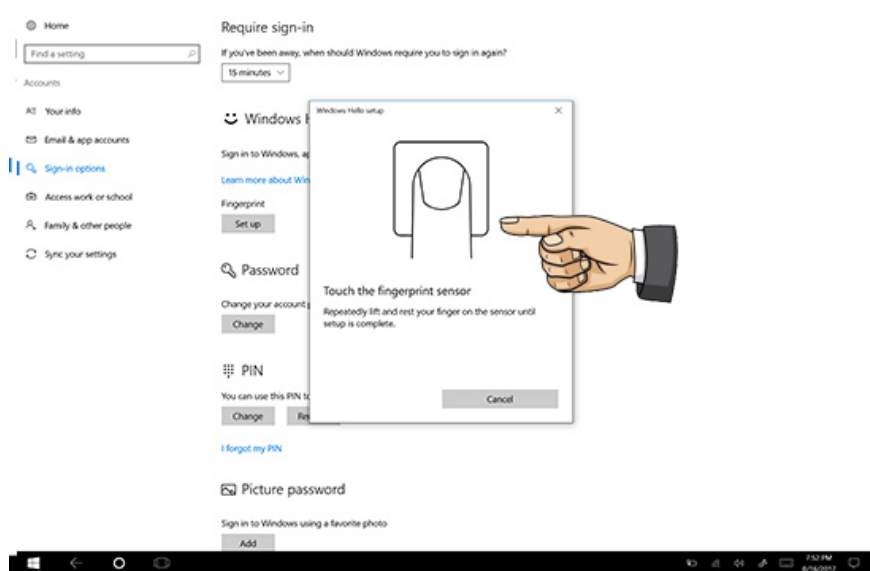
Step 3: Get Started.



Step 4: Enter the pin code.



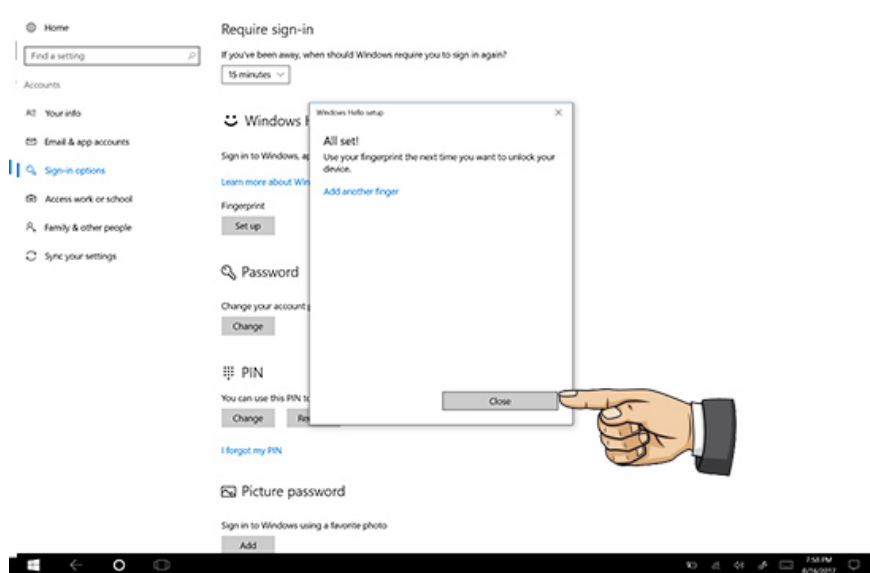
Step 5: Place your finger on the device's fingerprint support position and lift it up when it's full of fingerprints> Next.



Step 6: Re-confirm fingerprints.



Step 7: Close> Done.



How to use Windows Hello

?

So the operation is complete how to install Windows Hello on Windows 10. Wish you success.

You finished reading the article "**What is Windows Hello? How does Windows Hello work? How to install Windows Hello**" edited by the [TipsMake](#) team. We hope this article has provided you with many useful tech tips and tricks. You can search for similar articles on tips and guides. Thank you for reading and for following us regularly.