

What is Windows Device Manager? How to use it?

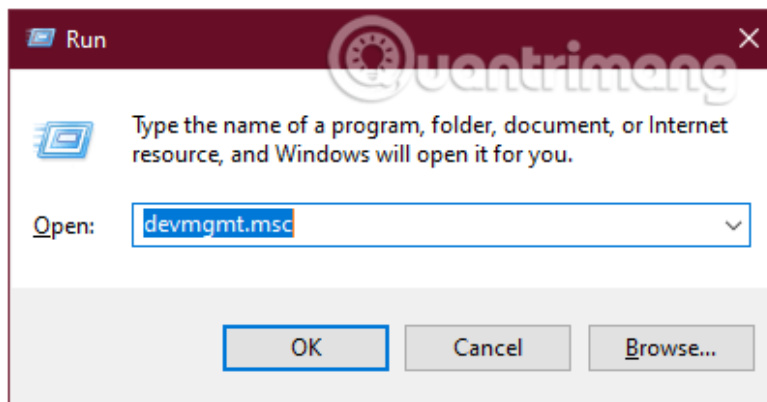
Windows Device Manager is an important tool in the Windows operating system, listing all the list of hardware devices recognized by Windows, including problems with unrecognized device drivers.

Windows Device Manager is an important tool in the Windows operating system, listing all the list of hardware devices recognized by Windows, including problems with unrecognized device drivers. Through **Windows Device Manager**, users can easily manage hardware devices in their computers.

This article will briefly introduce to readers how to use **Windows Device Manager** tool, as well as use **Windows Device Manager** to fix some errors related to computer hardware.

Start Windows Device Manager

The easiest way to start **Windows Device Manager** in any version of Windows is to use the **Windows + R** key combination to invoke the **Run** dialog, enter the **"devmgmt.msc"** code and press **ENTER** to execute a **Windows Device call. Manager.**



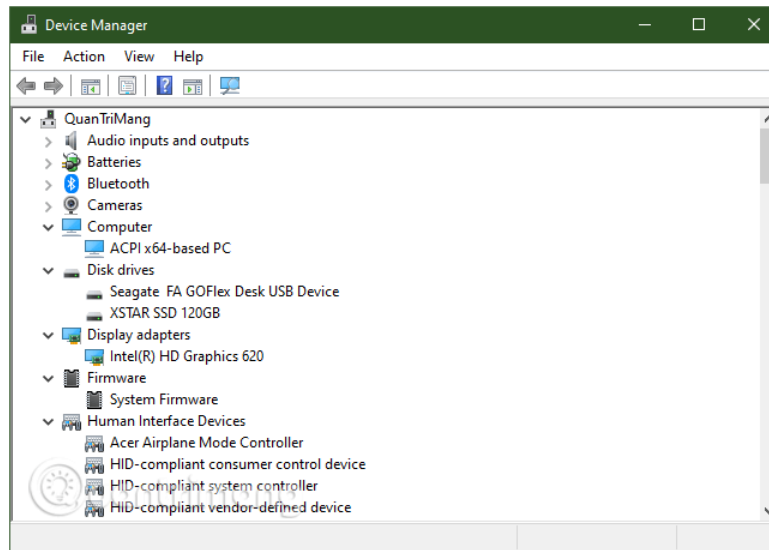
Use the "devmgmt.msc" script and press ENTER to execute calling Windows Device Manager

For **Windows 8** , drag the mouse to the lower left corner of the screen, right click and select the **"Device Manager"** command .

For **Windows 7** , navigate to **Control Panel> Hardware and Sound> Device Manager.**

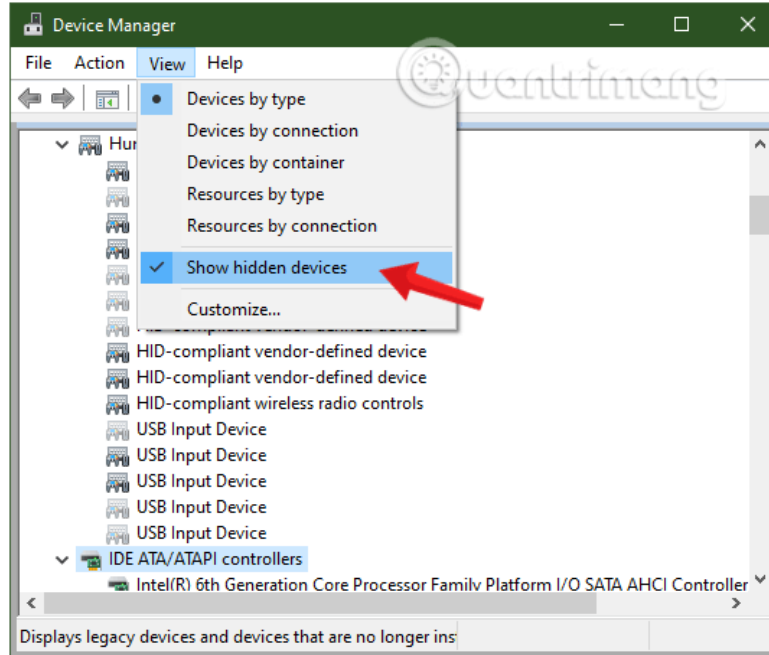
See a list of hardware devices that have been identified by Windows

By default, Device Manager will display a list of hardware devices recognized by Windows at the first display, all neatly organized. You can **click the arrow** to see more details about each device.



Click the arrow at the top of each section to see more details about each device.

Note: Some hardware devices will not be listed, you can view them in the **View** tab at the top of the window and select **Show hidden devices** . This will help Device Manager to display information about low-level drivers in Windows and third-party driver software installations.



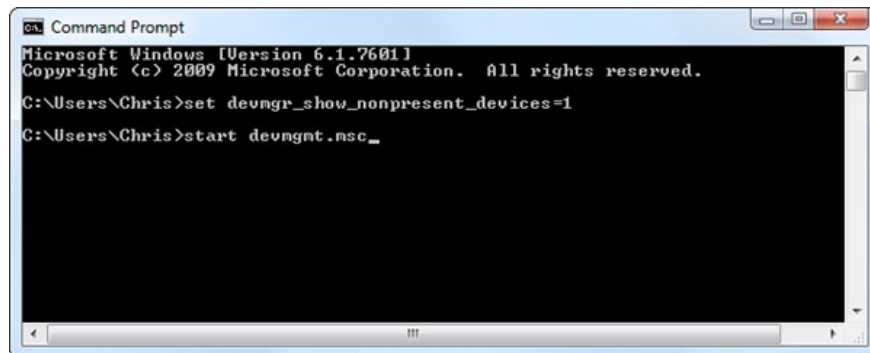
See hardware devices will not appear in the list

Some hidden devices will not show up in the list, even if you have selected the **Show hidden devices** command, such as previously connected and disconnected USB devices, called **Ghosted** . If you want to view them, you

must start Device Manager in the following special way:

First, open a **Command Prompt** window and enter the following command:

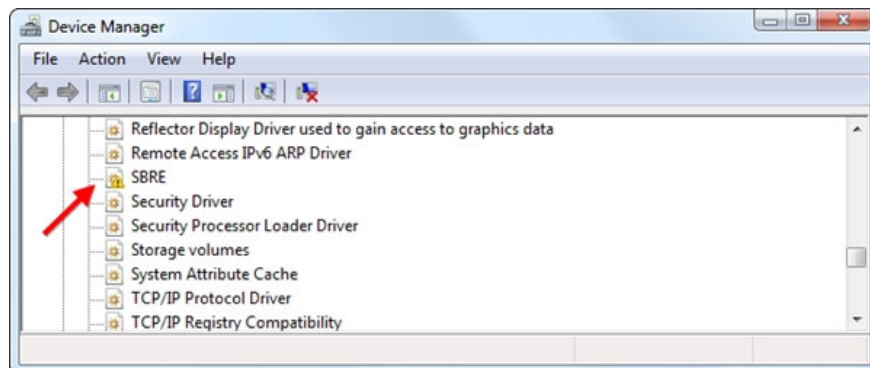
```
set devmgr_show_nonpresent_devices=1 start devmgmt.msc
```



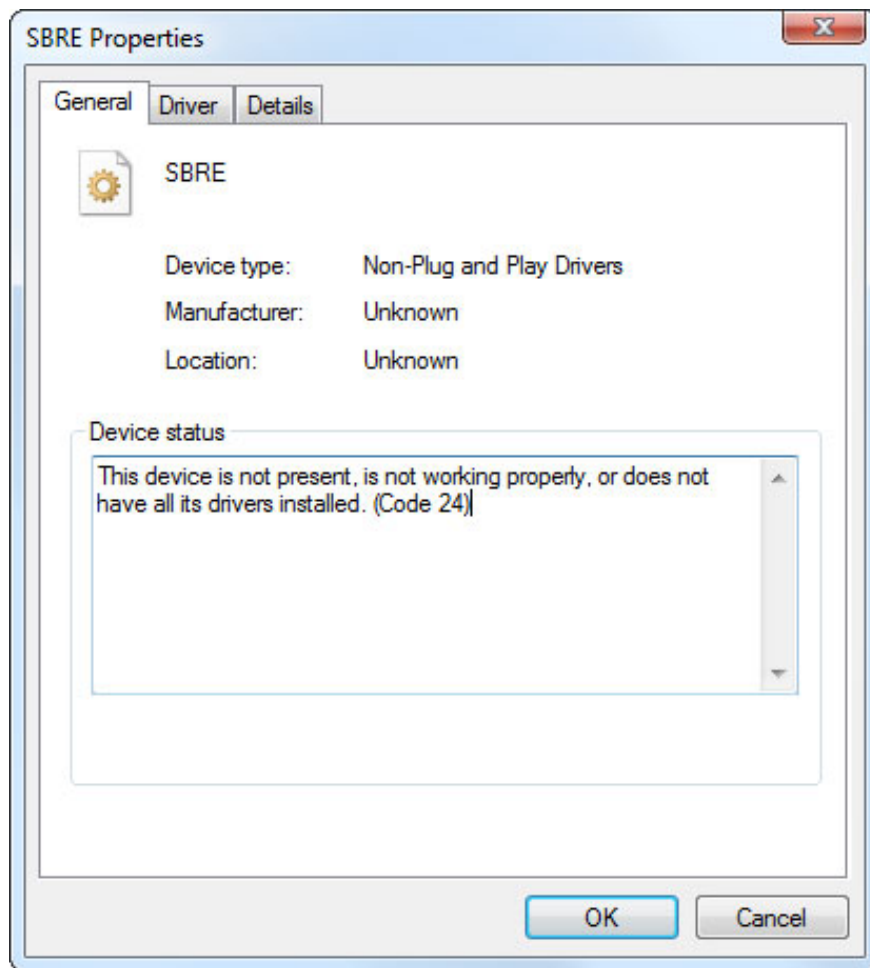
Device Manager tool will appear and list a complete list of hardware devices, including hidden. However, this method only works with Windows 7, Vista, or XP, and from Windows 8, this function has been removed.

Identify the device is not working

To identify devices that are not working in Device Manager, pay attention to **the yellow triangle icon with the exclamation mark inside it** . It is an icon of a device that is not working (possibly because of a driver problem).



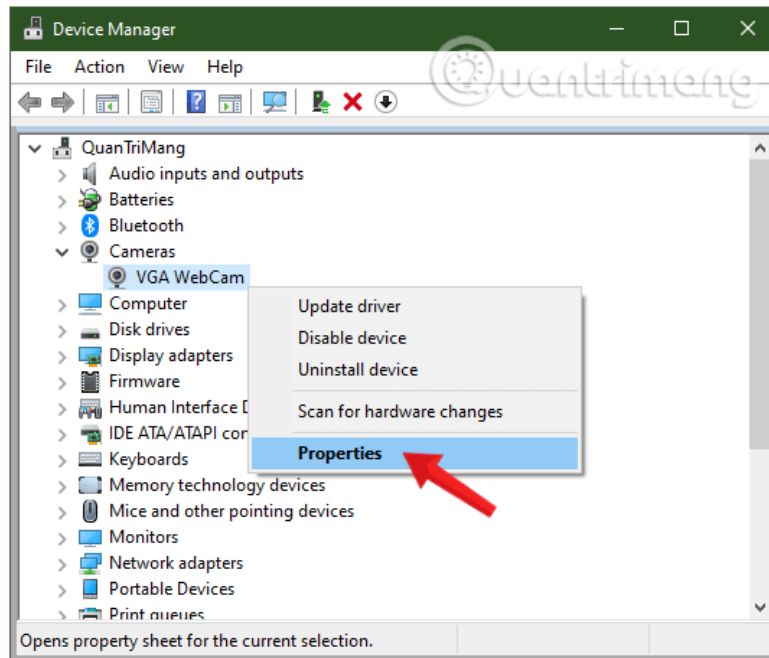
Now, right- **click the icon** and **right-click** , choose **Properties** to view device information and diagnose the problem (General tab). If the driver is related, go to the **Driver** tab and click **Properties** to fix it.



Disable a hardware device in a computer using Device Manager

If you do not use the function of some hardware in the device such as webcam, touchpad, you can disable them through Device Manager.

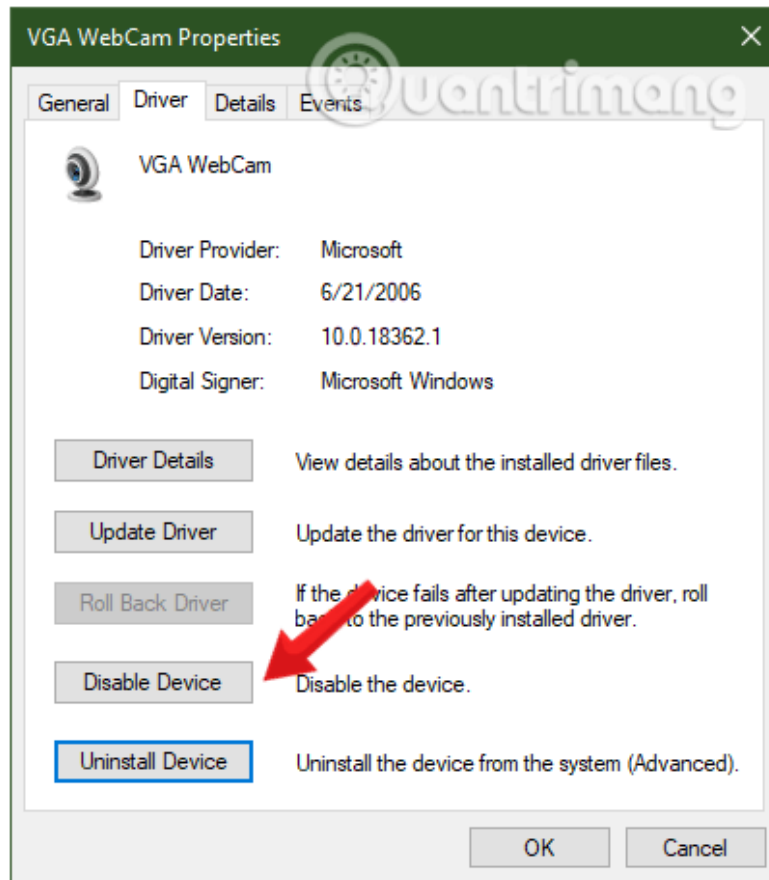
To do this, move the mouse to the device's location and **right-click** it, select the **Properties** command .



Right-click the device, select the Properties command.

The **Properties** window of the device will appear, select the **Driver** tab and select the **Disable Device** command

.



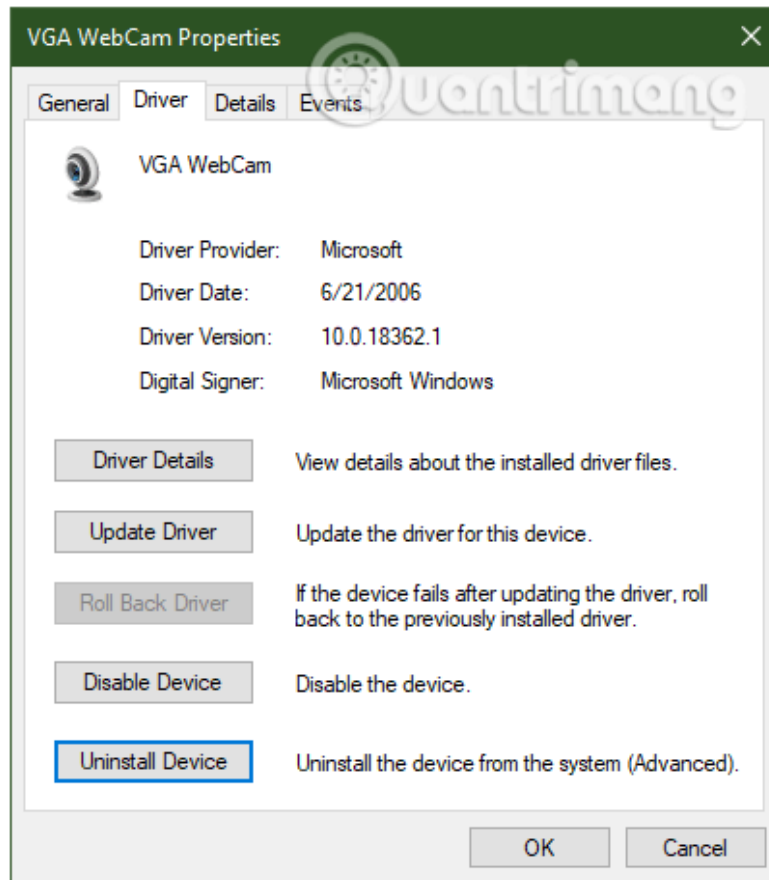
Select the Disable Device command to disable the device

Your setup will be executed after restarting the computer.

The commands in the Device's Drivers property menu of a recognized device

The Properties window of a recognized device will provide users with a number of operational commands related to the management and troubleshooting of a device problem. All are listed in the **Driver** tab, including:

1. **Driver Details:** Information about the device and the exact location it is present in the computer. This option is not very important.
2. **Update Driver:** Update the new version for device drivers. This option includes 2 options, search online and on the computer the new version of driver driver.
3. **Roll Back Driver:** Options to restore the status of the previous version of the driver driver.
4. **Disable:** Disable the device, preventing it from working every time Windows starts.
5. **Uninstall:** Uninstall drivers associated with devices from your system. This option is often used to remove certain drivers from your system and try to reset devices and drivers from scratch.



Some operation commands involve device management and troubleshooting

Hopefully with this article, you will have more knowledge about the Windows Device Manager tool that is quite useful in Windows.

You finished reading the article "**What is Windows Device Manager? How to use it?**" edited by the [TipsMake](#) team. We hope this article has provided you with many useful tech tips and tricks. You can search for similar articles on tips and guides. Thank you for reading and for following us regularly.