

# What is the Large Language Model (LLM)?

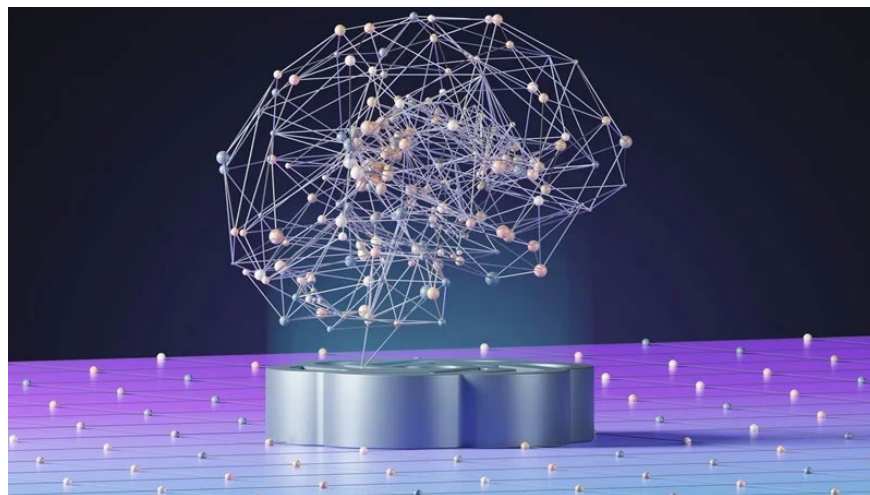
Generative AI, like ChatGPT, are taking the world by storm, but the secret ingredient behind them, Large Language Models (LLM), has been around for a while.

Generative AI, like ChatGPT, are taking the world by storm, but the secret ingredient behind them, Large Language Models (LLM), has been around for a while. As LLMs become more and more complex, they are poised to completely revolutionize the way we interact with technology. This article will delve into what LLMs are, how they work, and how they ultimately impact us, the end users.

## What is a large language model?

Large language models, such as OpenAI's GPT-3.5, represent complex artificial intelligence systems. They are designed to not only understand human-like text provided as input but also generate response text.

Built on Machine Learning principles, LLM relies on a transformer model, a type of artificial neural network designed to instruct computers to process data in a similar way to the human brain. The operating principle of these artificial neural networks involves layered nodes, reminiscent of the structure observed in biological neurons.



LLM is like data powerhouses. To work effectively, they are trained with many examples. This data equips them with the ability to understand and interpret the nuances of human language, along with other complex information.

Many LLMs today undergo training procedures using data sets sourced from the Internet, but this practice can be a double-edged sword. Data quality directly affects how well an LLM learns natural language. Programmers can face a major challenge in filtering and selecting high-quality data sets to ensure the LLM acquires accurate and

unbiased knowledge.

Large language models are a game changer for data-driven organizations. Their great potential lies in processing and generating huge amounts of information. Newer models excel at generating real-time, on-site feedback, perfect for fast-paced environments.

The advantages don't stop there. LLMs are built on a robust and adaptable platform, meaning they can be customized to address specific needs within an organization. The biggest advantage is that LLM constantly learns and develops. As you feed them more data and tweak parameters, their accuracy and capabilities improve, making them more valuable assets than ever.

## **Difference between Generative AI and LLM**

The term 'Generative AI' is being thrown around a lot these days, but what is it and is it different from an LLM?

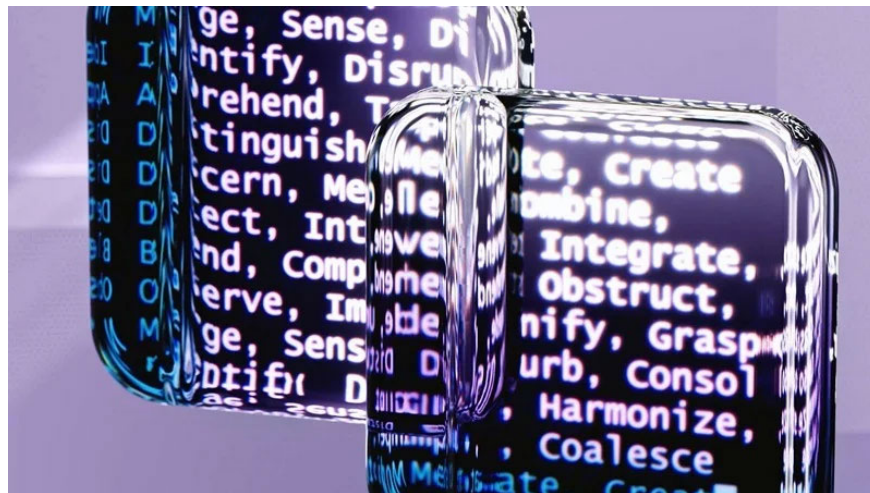
Generative AI is the general term for artificial intelligence models that can generate new content. These models are designed to generate text or other media content, while large language models specialize in text.

## **How does the large language model work?**

A large language model uses a complex approach consisting of several stages:

### **Training money**

The LLM is not provided with any specific instructions during unsupervised data training. Instead, it simply processes the data provided, allowing patterns and relationships in the information to be identified automatically.



This is how the LLM begins to develop a basic understanding of language. At this stage, it is possible to learn the meaning of individual words and how they interact with each other to form sentences. Furthermore, the model begins to distinguish different meanings of the same word based on the given context.

Thanks to this thorough training regime, LLMs are capable of covering a wide range of use cases, earning them the title of platform model. The LLM's ability to generate text for diverse purposes is called Zero-shot learning.

## Option

Zero-shot learning offers impressive flexibility, but in many cases, developers and businesses require more specific performance from their large language models. Refinement addresses this need. It introduces a supervised learning phase, where the model is specifically trained to improve its ability to identify target concepts with greater accuracy. This allows for a level of control and customization that goes beyond the general capabilities of Zero-shot learning methods.

There are several fine-tuning techniques available, of which supervised fine-tuning is the most popular. Transfer learning offers another approach, but it's important to note that all fine-tuning methods are technically a form of Transfer learning. This particular process uses the pre-trained model as a starting point for fine-tuning. The pre-trained model has been trained on similar tasks and this knowledge can be transferred to new tasks.

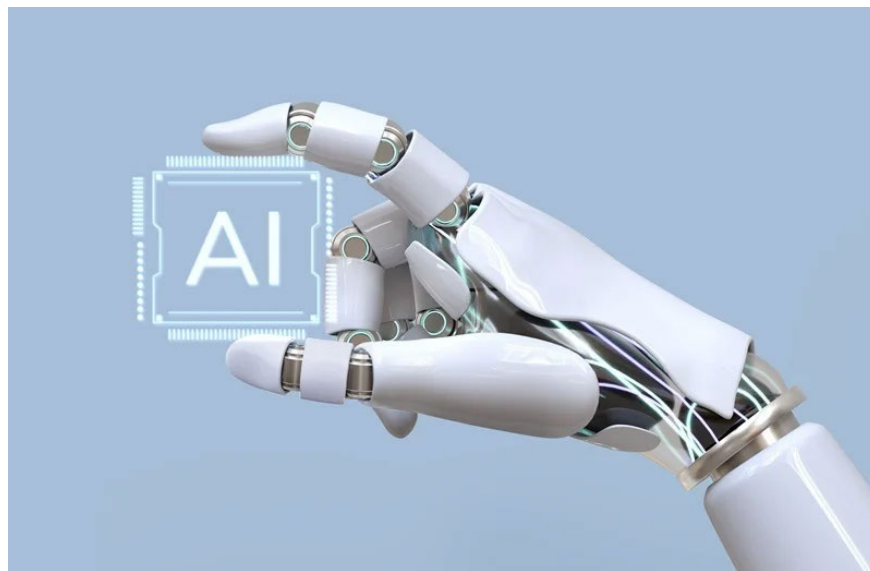
## Reinforcement from human learning

Reinforcement learning from human feedback (RLHF) is a promising avenue to enhance LLM, by integrating human input into the training process. This approach allows LLM to learn and adapt in real time, based on feedback from reviewers, fine-tuning their language generation capabilities to better meet user expectations.

By leveraging reinforcement learning from human feedback, large language models can achieve higher levels of complexity and efficiency in various language-related tasks, benefiting benefits users across many applications and fields.

## Things you should know about LLM

As major language models become more accessible, they will dramatically change the way we interact with technology and information in general. These models enable more natural and intuitive communication, as users can interact with systems and applications using everyday language, instead of navigating complex interfaces and learning confusing commands. .



LLM offers a wide range of applications, from email composing and code generation, to query answering, text translation, etc. Additionally, search engines exploit LLM to enhance the relevance and context of results. search

results.

For businesses, large language models can help streamline operations and improve the customer experience. These AI systems can analyze huge amounts of data to evaluate customer sentiment and adjust marketing strategies accordingly. Furthermore, LLM enables the development of chatbots that handle basic customer service tasks, thereby freeing up human employees to focus on more complex tasks.

The rise of the LLM is also revolutionizing e-commerce by personalizing the shopping experience. Customers want convenience, as well as tailored product recommendations, and the LLM is key to delivering exactly that. Businesses can leverage these models to curate personalized content, recommendations, and services.

The benefits are clear: Increased customer satisfaction, higher engagement, and ultimately increased sales. It follows the way Spotify creates custom playlists based on listening habits through its Discover Weekly service and the way Netflix tailors movie recommendations based on preferences.

As LLM continues to evolve and integrate with a variety of applications and services, it empowers users with unprecedented knowledge and capabilities, changing the way we work, learn and interact in the digital age.

AI is rapidly expanding its reach, with applications emerging in almost every industry. For example, if you are a teacher, you can use these AI tools to enhance your lessons. Additionally, freelancers can use AI meeting assistants to record meetings, take notes, and summarize hours of content.

You finished reading the article "**What is the Large Language Model (LLM)?**" edited by the [TipsMake](#) team. We hope this article has provided you with many useful tech tips and tricks. You can search for similar articles on tips and guides. Thank you for reading and for following us regularly.