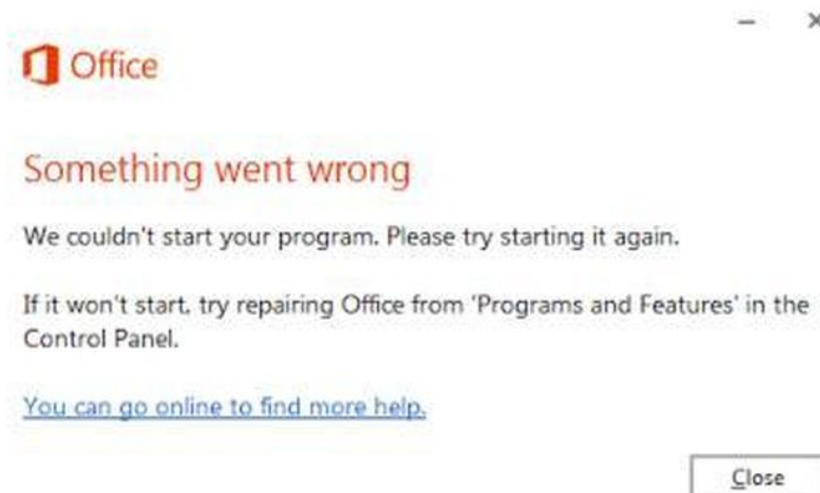


What is the error 'Something went wrong'? Quick fix when using Word

What is the error 'Something went wrong'? This is a fairly common error many people encounter when opening Microsoft Word. Please follow the following article to know how to fix this error.

What is the error "Something went wrong"? Instructions on how to fix it easily

When you open Word and the error message 'Something went wrong' appears and you cannot open Word, it means your Office suite is having problems. We need to fix the Office suite error according to the following steps.



Step 1 : Click on the Windows search tool. Then press search **control panel** . When the search results appear, select **Control Panel** . Or you can find the **Control Panel** location on your computer yourself.

Step 2: After the **Control Panel** dialog box appears. Here you select **Programs** .

Next select **Programs and Features**.

Step 3 : In the **Uninstall or change a program section in the Programs and Features** window . Scroll down and find **Microsoft Office Professional Plus 2016** . Then right-click and select **Change** .

Step 4 : At this point, the **Microsoft Office Professional Plus 2016** window appears. You select **Repair** then click **Continue** . The error correction process will take a few minutes.

Until the message **Done repairing!** appears, which means the error correction process has been completed. Now you can restart Windows and reopen Microsoft Word.

So, the above article has explained to you what the 'Something went wrong' error is and instructions on how to fix it when opening Microsoft Word. Hope this article will be useful to you in the process of using this software. Good luck!

You finished reading the article "**What is the error 'Something went wrong'? Quick fix when using Word**" edited by the [TipsMake](#) team. We hope this article has provided you with many useful tech tips and tricks. You can search for similar articles on tips and guides. Thank you for reading and for following us regularly.