

# What is the Default Gateway? How to view and configure the Default Gateway on Windows

What is the Default Gateway? How to view and configure the Default Gateway on Windows. The Default Gateway (DG for short) is first an IP address, and is also known as the default gateway of a computer network. This address will be configured for the computer and the default computer will send

What is the Default Gateway? How to view and configure the Default Gateway on Windows. Let TipsMake.com go to solve these problems.



## What is the Default Gateway?

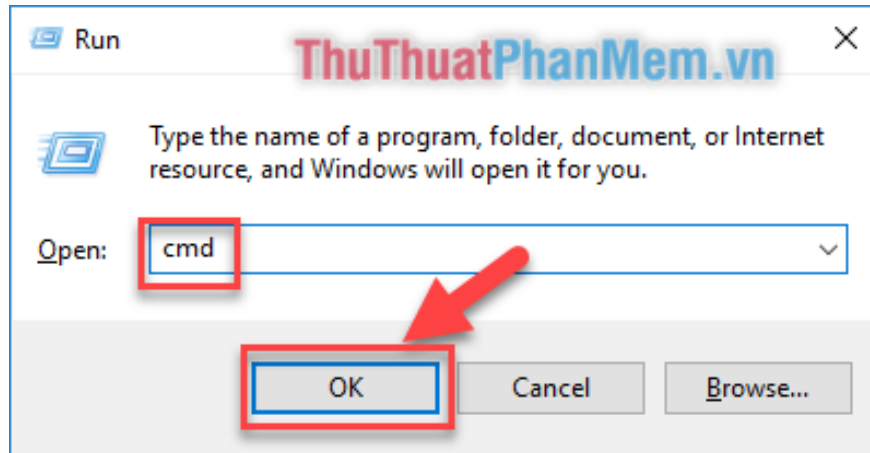
*The Default Gateway* ( **DG** for short) is first an IP address, and is also known as the default gateway of a computer network. This address will be configured for the computer and the default computer will send packets to this address to continue going elsewhere.

**DG** must be in the same network class as the IP address of the device configured with **DG** . Whenever Host 1 and Host 2 need to send information, that information will be sent to the *Default gateway* address configured on the Host and the *Default gateway* will forward this information to the next device. .

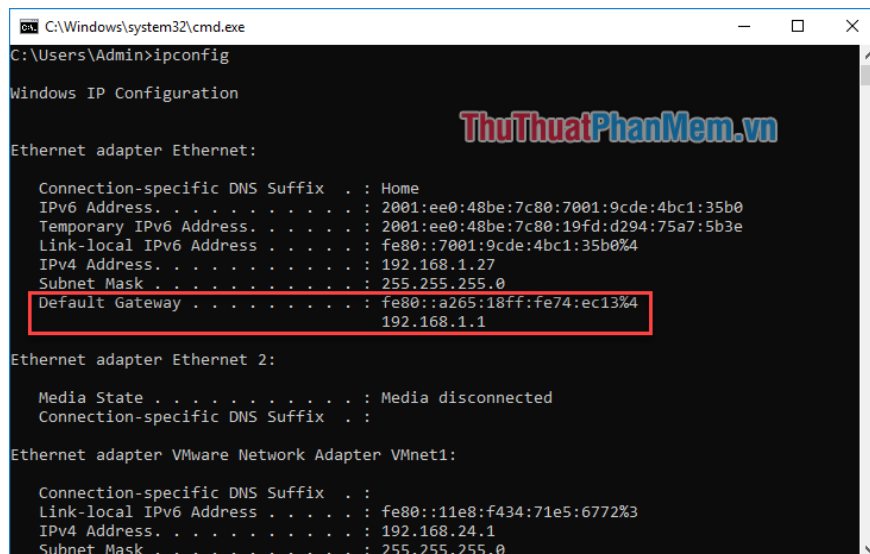
## How to view the Default Gateway on Windows

Step 1: You turn on the **Run** dialog box of Windows by pressing the key combination ' **Windows + R** '

Then type the command ' **cmd** ' and select **OK**



Step 2: After the window appears, type ' **ipconfig** ' and press **Enter**.



After the Enter is completed we will immediately see your network Defult Gateway is in use. For example, in the image, the Defult Gateway is: 192.168.1.1 - Usually the default Modem DG.

## How to configure the Default Gateway on Windows

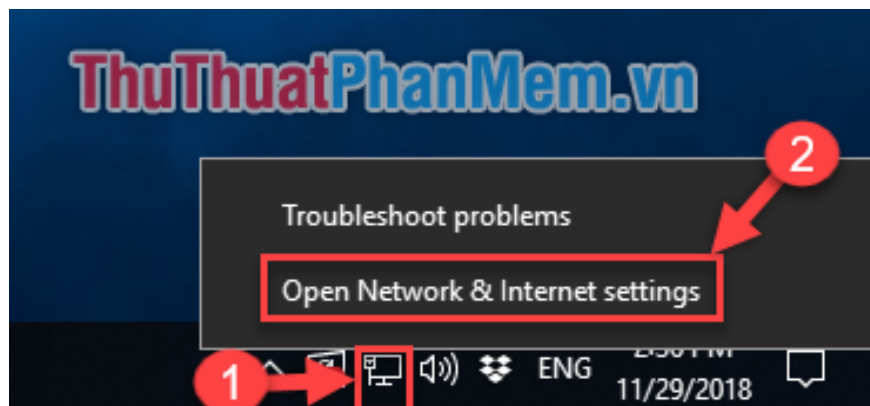
In fact, most cases we do not need to configure the Default Gateway because normally, the IP parameters and the Default Gateway will be provided by the Router to the computer via DHCP and this will be done automatically when User connected to the network.

But sometimes for some reason, it is possible that your network is not running DHCP but requires users to manually configure the computer, or we want to switch the Default Gateway to a different IP than the Router IP. , etc. . then we must manually configure the Default Gateway for the computer by:

Step 1:

(1) Right-click the computer icon in the right corner of the screen.

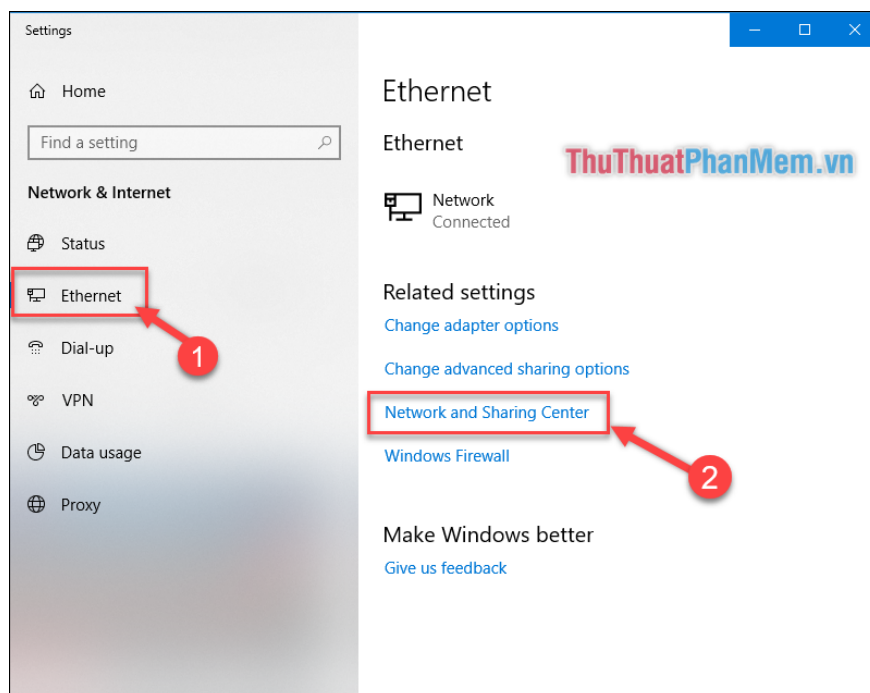
(2) Select **Open Network & Internet settings** .



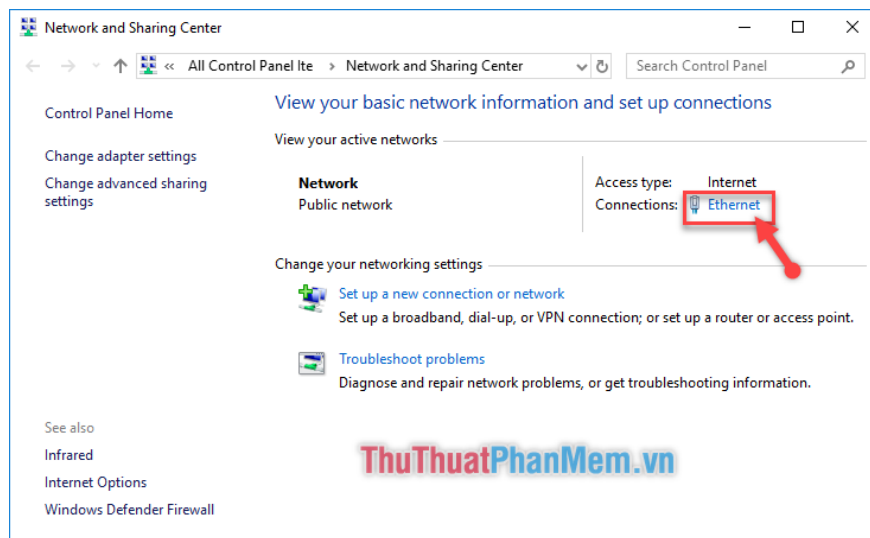
Step 2: In the new window that appears

(1) Select the **Ethernet** item .

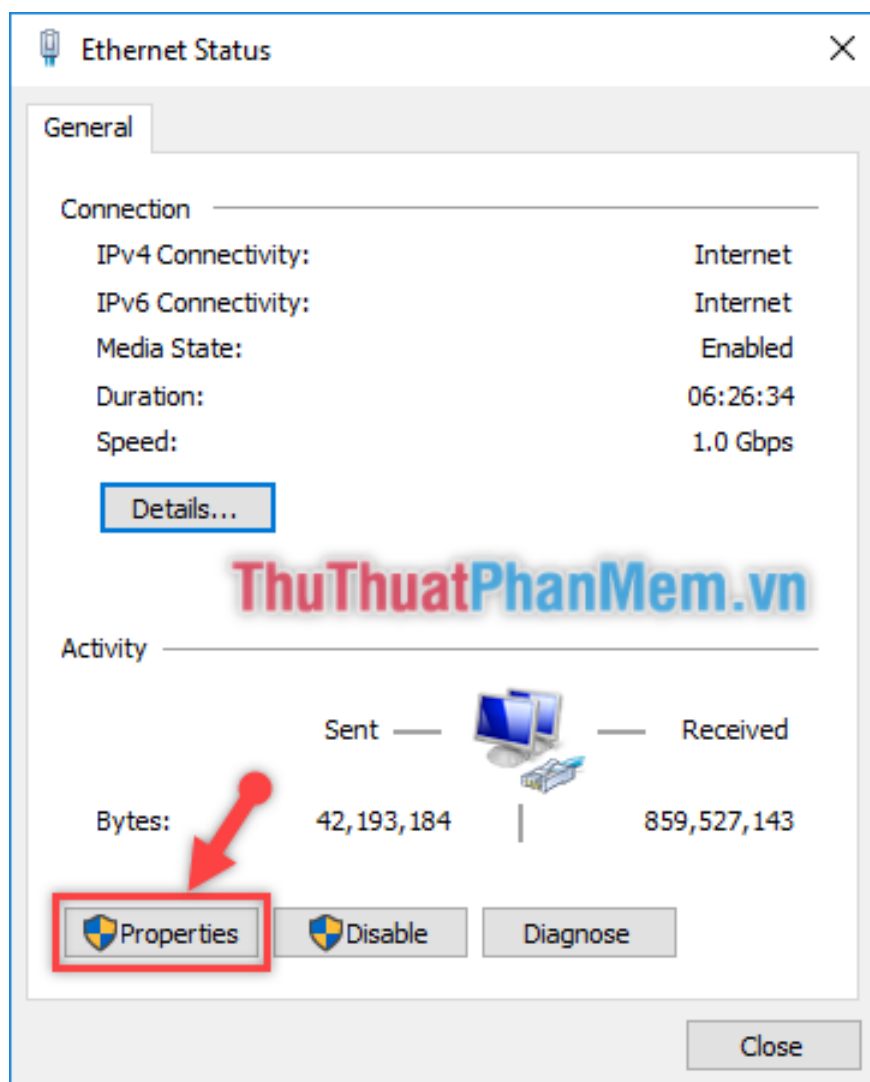
(2) Select **Network and Sharing Center** .



Step 3: In the new window, select **Ethernet** .



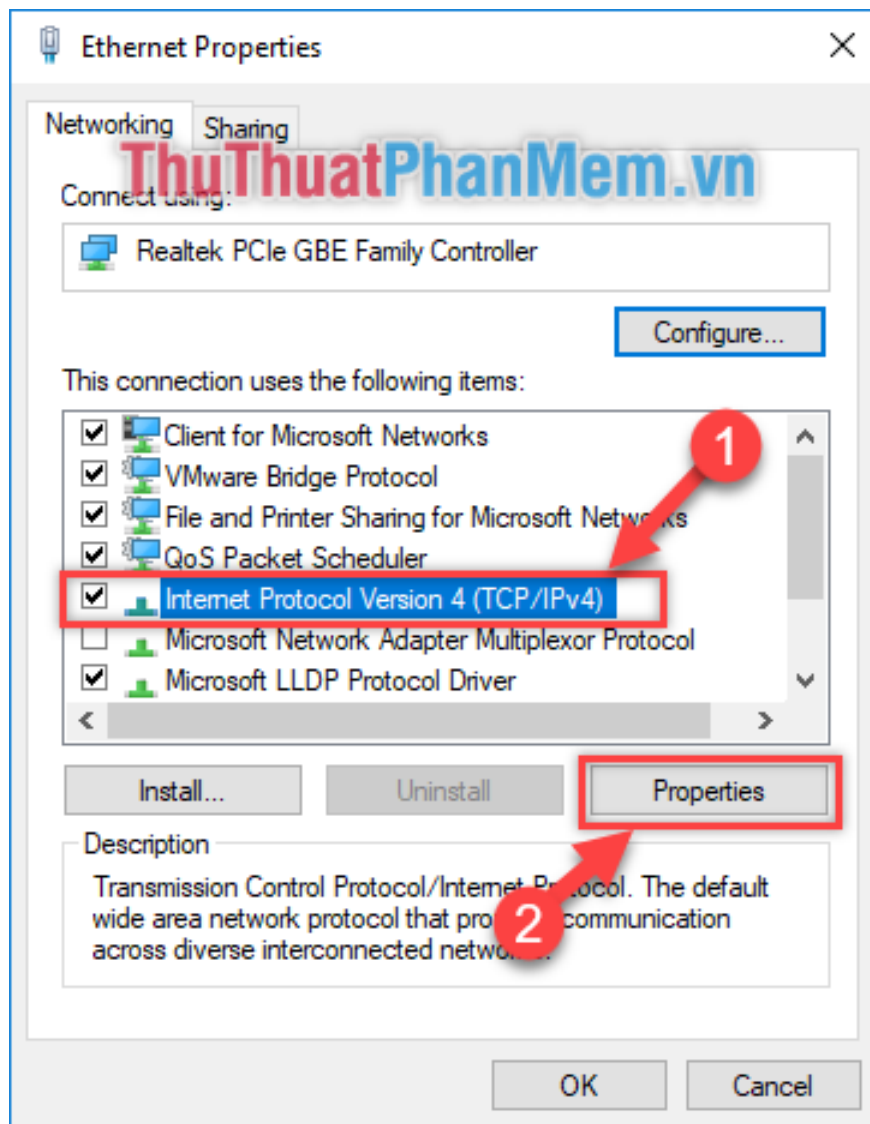
Step 4: New window, select **Properties** .



Step 5: In the new window,

(1) Pull the toolbar to find the line ' **Internet Protocol Version 4** '

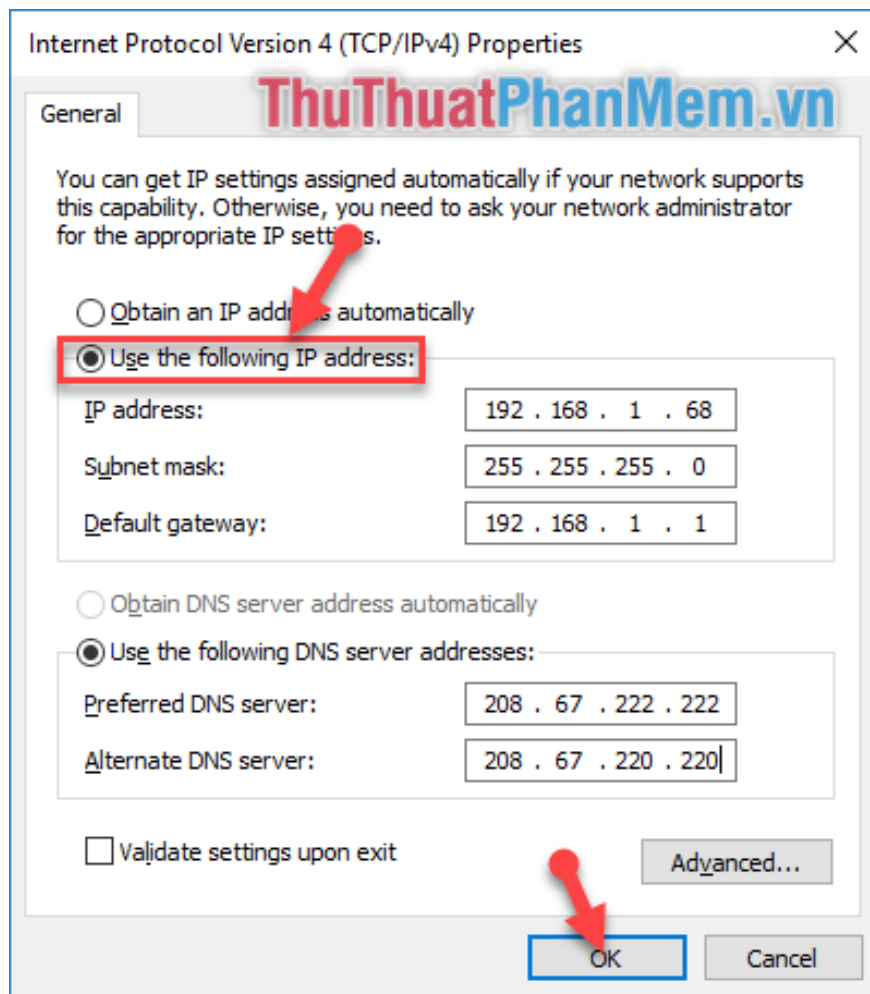
(2) Click on **Properties**.



Step 6: Here, click on the line ' **Use the following IP address** '

So you can change the **Default Gateway** configuration as you like.

Normally, the default Modem Default Gateway is: 192.168.1.1



After filling in the IP address and Default Gateway, click OK and you're done.

So TipsMake.com has sent you information about Default Gateway and how to search Default Gateway on Windows. Thank you for watching!

You finished reading the article "**What is the Default Gateway? How to view and configure the Default Gateway on Windows**" edited by the [TipsMake](#) team. We hope this article has provided you with many useful tech tips and tricks. You can search for similar articles on tips and guides. Thank you for reading and for following us regularly.