

What is System Report in Windows? How to generate and analyze this report?

You can use System Information to generate a system report, which you can then analyze yourself, or send someone with more technical knowledge of Windows to help you.

Windows has a tool called System Information and this tool is commonly used to diagnose and fix problems on PCs. You can also use System Information to generate system reports, which you can then analyze yourself, or send someone with more technical knowledge of Windows to help you. The following article will show you how to create this useful report and analyze it.

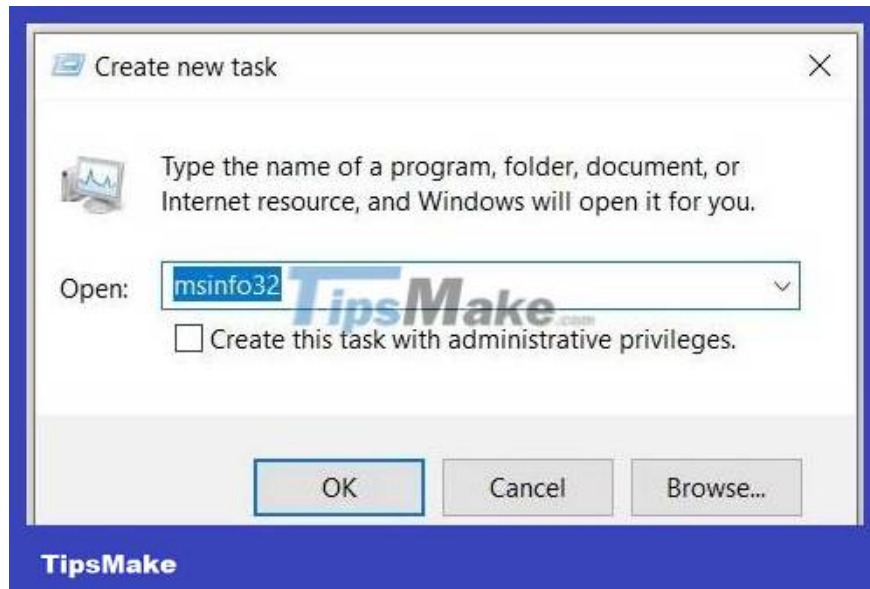
What is System Report on Windows?

The system report is a text document that contains detailed information about the hardware and software installed on your computer. This information includes the status and configuration of hardware and software. System reports are useful when you need to troubleshoot specific problems, check your computer's specifications, or when you want to send files to a support technician who can help you diagnose the problem.

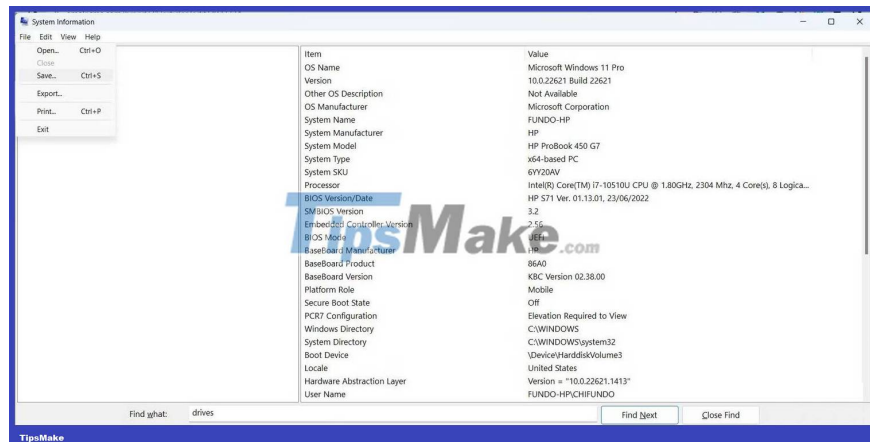
How to create a system report on Windows

To generate a system report, you must first open the System Information window, and then save the information you see there as a text file. Here's how to do it.

1. Press **Win + R** to display the Windows Run dialog box, type **msinfo** in the text box, and then press the **Enter** key to display System Information.



2. To create a report, click **File** in the top right corner and select **Save**. Alternatively, you can press **Ctrl + S** on your keyboard.



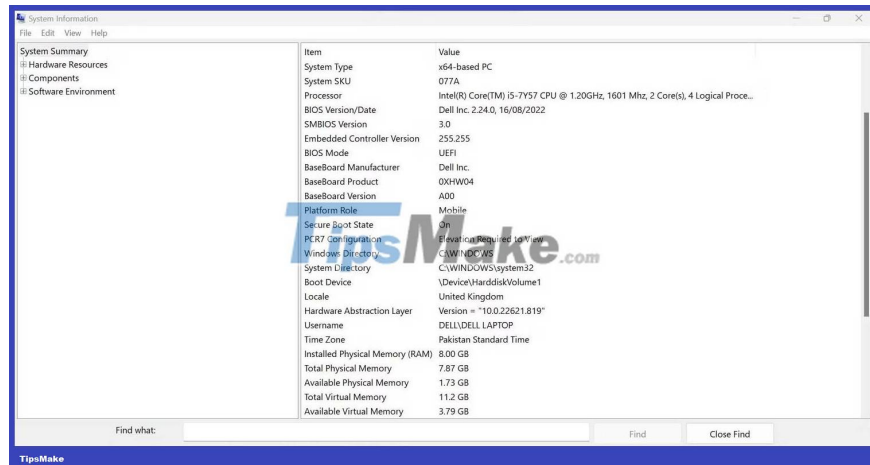
3. Select a location where you want to save the file and click **Save**.

Now, you can open the system report or send it to a technician to analyze and find the error of the computer.

How to analyze system reports on Windows

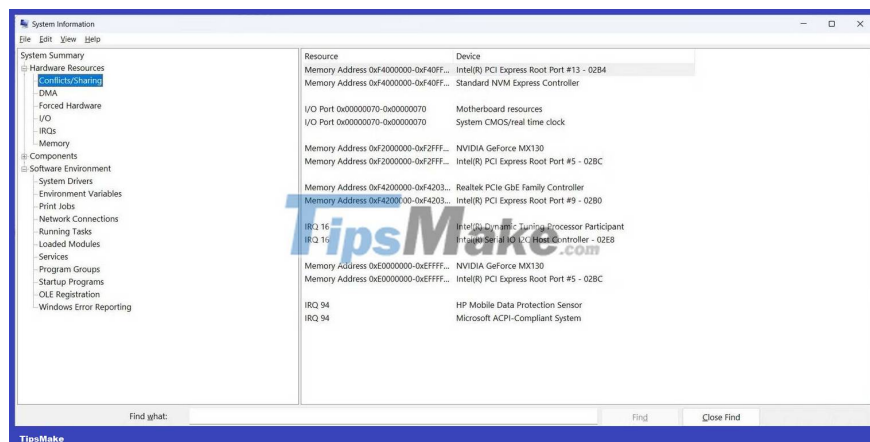
System reports contain a lot of information about your Windows computer, and they can be a bit confusing. The article can help you understand the basics so you don't get confused when looking at it. To get started, go to where you saved the system report and double-click to open it.

Once it loads, you will reach the **System Summary** section in the navigation panel on the left and it will show you an overview of your PC in the right panel. In addition to information about the operating system (name and version) and system (motherboard manufacturer, computer model, and processor type), you will also find other confusing information, such as your BIOS mode (if it is UEFI or not) and the size and location of pagefile.sys.

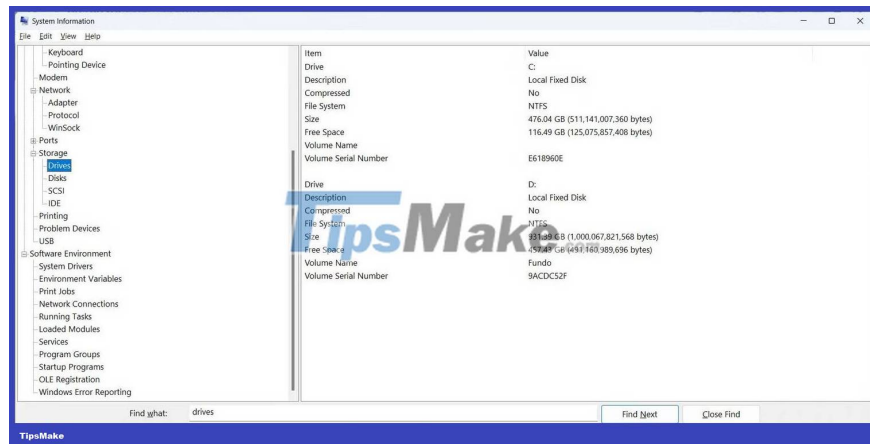


In the **System Summary** in the navigation pane, you'll find subsections containing more detailed information, with the first being **Hardware Resources**. Here you will find information about the hardware currently installed on your system and how it works.

For example, you can use this section to learn about any hardware conflicts by selecting **Conflict/Sharing**.



The **Components** section lists all the components (audio and video code, drives, keyboards and network adapters) installed on your computer. All are categorized by function so it's easy to find what you need. That means if you're looking for information about the display on your computer, you'll find it under **Display**.



Now you don't have to open multiple sections just to find what you're looking for, as the search function saves a lot of time.

You finished reading the article "**What is System Report in Windows? How to generate and analyze this report?**" edited by the [TipsMake](#) team. We hope this article has provided you with many useful tech tips and tricks. You can search for similar articles on tips and guides. Thank you for reading and for following us regularly.