

What is DPC Watchdog Violation? How to fix DPC Watchdog Violation errors in Windows

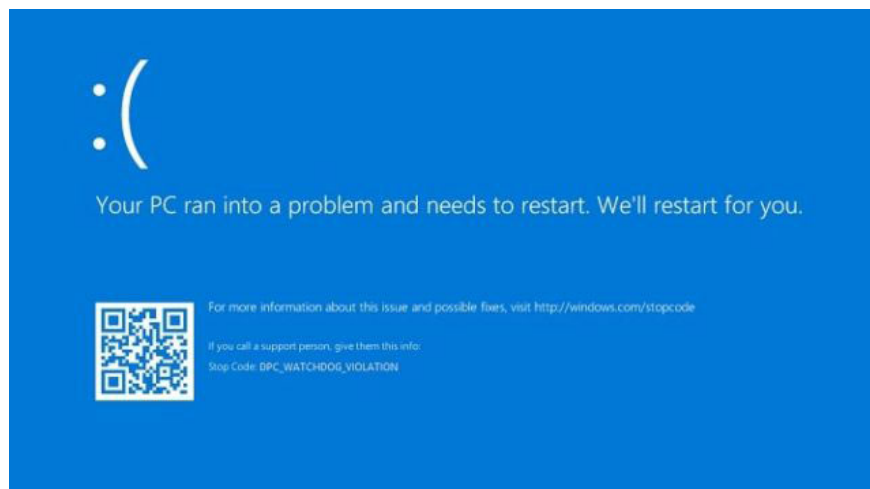
There are many problems related to Windows 8, 8.1 and Windows 10. One of such problems is the DPC Watchdog Violation error, forcing the system to reboot to prevent any serious or permanent damage.

You are working on a Windows 8, 8.1, or Windows 10 computer and suddenly it freezes or appears with a blue screen of death, notifying that your computer will reboot after 5 seconds due to the DPC Watchdog Violation error. .

If this happens over and over again for a while, then a long-term solution to the problem is needed.

What is DPC Watchdog Violation?

There are a lot of issues related to Windows 8, 8.1 and Windows 10, just like other previous versions. One of such problems is the DPC Watchdog Violation error, forcing the system to reboot to prevent any serious or permanent damage. When an error occurs, the screen will turn green and an error code will appear along with a countdown timer for the system to reboot.



DPC Watchdog Violation error message

The consequence of this is that the system is suddenly shut down and you may lose what's not saved.

The problem can be caused by a number of reasons, but one of the main culprits is due to outdated, problematic or improperly installed device drivers. Another possible cause of DPC Watchdog Violation errors is incompatible hardware changes. When you have two or more software programs that conflict with each other or have problems with your sound card, it can also cause errors.

How to fix DPC Watchdog Violation errors in Windows

If this problem keeps coming back, you need to fix it. However, because as mentioned above, problems can be caused by different causes, so not all solutions are effective for everyone.

Before deciding which solution to use, you should run the **Events Viewer** (this tool can detect problems that have occurred and notify you). To do this:

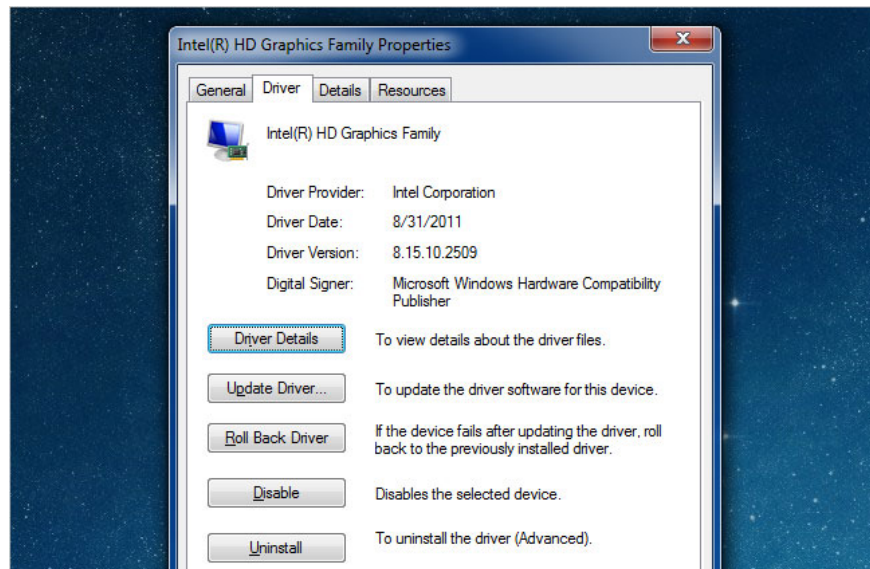
1. Click Win+ X and select **Events Viewer** from the list.
2. On the control panel on the left, click **Windows Logs > System** . A report will appear.
3. Check if there are any error messages. Here, you can find out what and when the problem occurred.

If you don't see anything important there, follow the methods below to try and fix the DPC Watchdog Violation error.

Method 1: Update the Chipset driver

The first thing you may want to do is update your chipset driver by following the steps below:

1. Open **Device Manager** by clicking the Start menu and searching.
2. Double click **IDE ATA / ATAPI Controllers** .
3. Look for **SATA AHCI** , right-click on it and then select **Properties**.
4. Click the **Driver** tab and select **Driver Details** to confirm that you have **storahci.sys** listed as a driver.



Click the Driver tab and select Driver Details

5. Click **OK** and you will be taken back to the previous box.

6. Now, click the **Update Driver** button .

7. Click **Browse my computer for driver software** and select from the driver list.

8. Next, select the **Standard SATA AHCI Controller** from the list provided and click **Next**.

9. When the process is completed, please restart the computer.

Method 2: Update the driver

The next thing you may need to do is update the driver, as driver problems are one of the causes of the error. You can do this manually, or use the driver updater to check and see if any drivers are available to update or need to be changed.

Reference: [5 basic ways to update, update drivers for computers](#) for more details.

Method 3: Software or hardware conflict

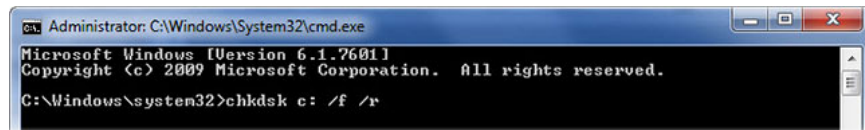
There are software programs, especially anti-virus software, that you are not allowed to run together. If you have installed new software and start having trouble, the best thing you can do is uninstall the program. In addition, if you have 2 antivirus software running on your computer, deactivating one may help prevent the problem.

Also, if you made any software changes to your computer before it started to occur, you can consider removing this software to see if that fixes the problem.

Method 4: Use the Disk Check tool

Another cause for this error may be a drive failure. To check, follow these steps:

1. Open Command Prompt with admin rights.
2. In the **Command Prompt** , type **chkdsk / f / r** and press the key Enter.



```
Administrator: C:\Windows\System32\cmd.exe
Microsoft Windows [Version 6.1.7601]
Copyright (c) 2009 Microsoft Corporation. All rights reserved.
C:\Windows\system32>chkdsk c: /f /r
```

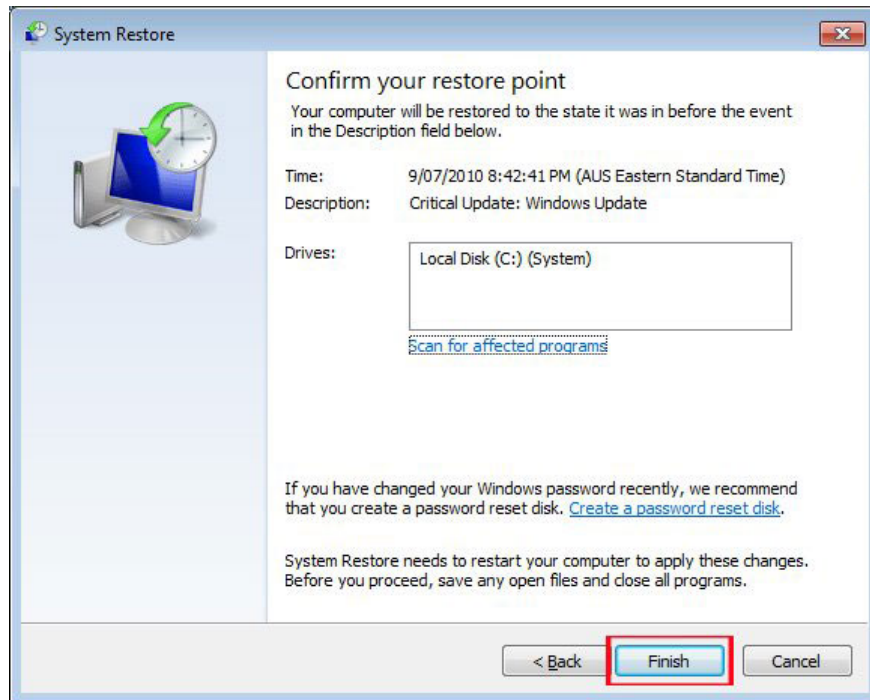
Type `chkdsk / f / r` and press Enter

1. Select **Y**the next time the computer boots up, the drive will be checked.

Method 5: Restore the computer to an earlier time

One more thing you can do if the above methods fail is to restore the system to the point where it worked. If the error is due to changes made, this should be able to fix the problem.

To restore the system, follow the steps in the article: [Instructions to create backup and restore points \(Restore Point\) on Windows 10](#).



Create a restore point

Sometimes the DPC Watchdog Violation problem may even prevent you from using your computer, because it keeps having problems when you turn it on. In such a case, you can try to fix the error via Safe Mode, by pressing the `Ctrl`+ keys `F8` because the system is in the process of booting.

You finished reading the article "**What is DPC Watchdog Violation? How to fix DPC Watchdog Violation errors in Windows**" edited by the [TipsMake](#) team. We hope this article has provided you with many useful tech tips and tricks. You can search for similar articles on tips and guides. Thank you for reading and for following us regularly.