

# What is Classic Shell? How to use Classic Shell to customize Menu on Windows 10, 8, 7

Classic Shell is a popular Start menu custom application with stability and ease of use and operation. If you're fed up with the default Start menu on Windows, we can use and change the wind and customize the Start menu to make your desktop fresher.

Classic Shell is a popular Start menu custom application with stability and ease of use and operation. If you're fed up with the default Start menu on Windows, you can use and "change" and customize the Start menu to make your desktop fresher.



## 1. What is Classic Shell?



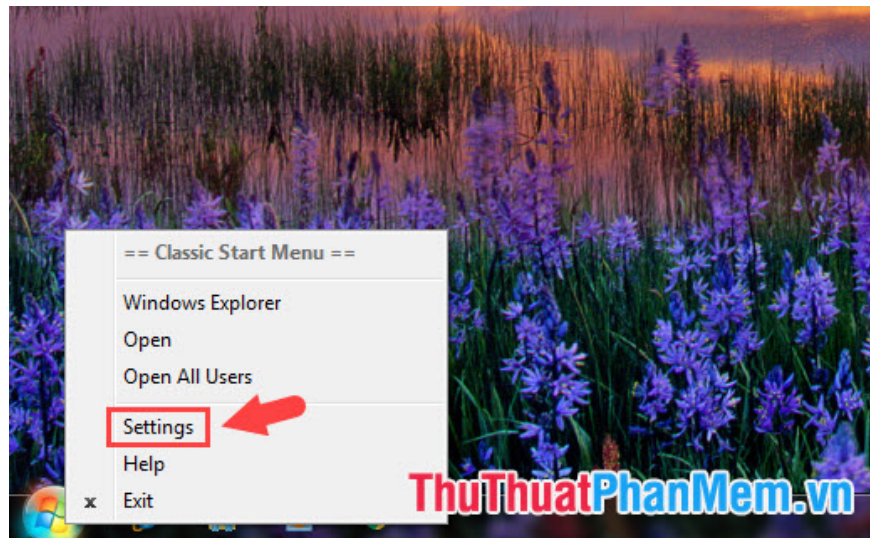
Classic Shell is a collection of features available in older versions of Windows that allows you to customize the Start menu and Start button on Windows 7, 8, and 10.

Using Classic Shell is quite simple, you just need to install and follow the instructions as you can customize yourself a desired Start menu interface. In addition, Classic Shell helps you restore hidden features that Microsoft has removed on Windows, and you can use those useful hidden features to customize Windows your way.

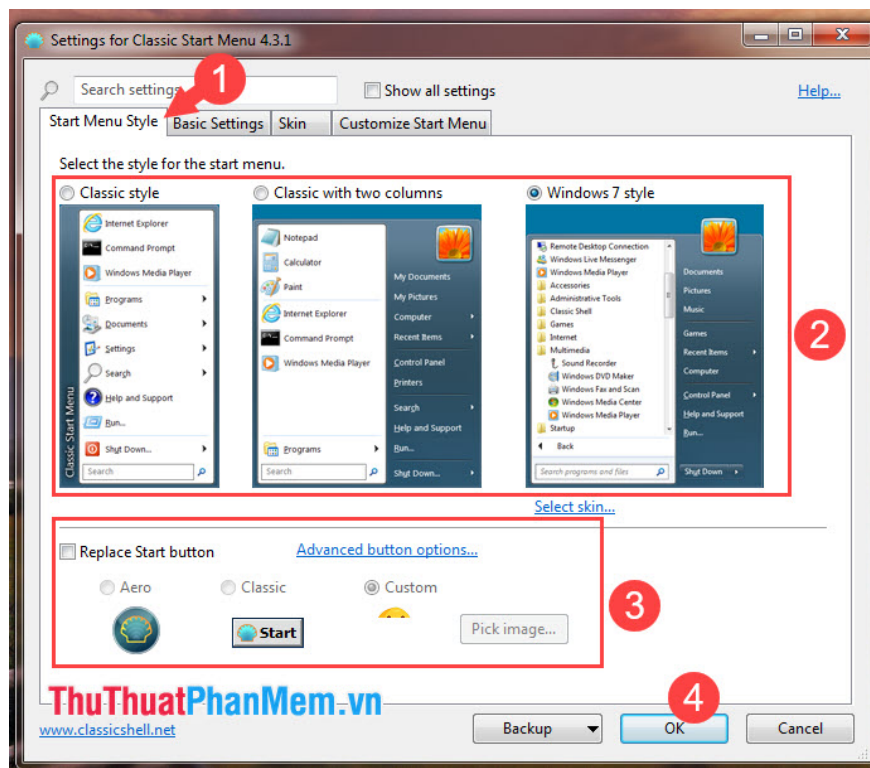
## 2. How to use Classic Shell to customize the menu on Windows 7, 8, 10

First, download the **Classic Shell** tool here and install <http://www.classicshell.net/>

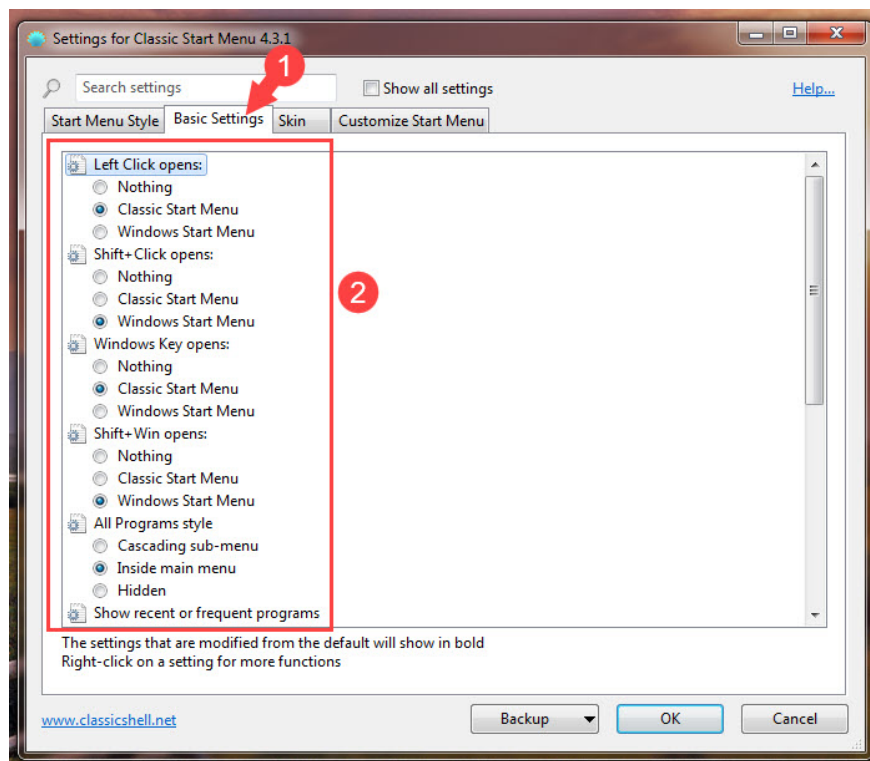
**Step 1:** Right-click the **Start menu** and select **Settings** .



**Step 2:** You select the **Start Menu Style** tab (1) and you select the Start menu template according to your preference in **Select the style for the start menu** (2) . If you want to change the Start Menu icon, check the **Replace Start button** (3) and select your favorite icon. Then click **OK** (4) to finish.



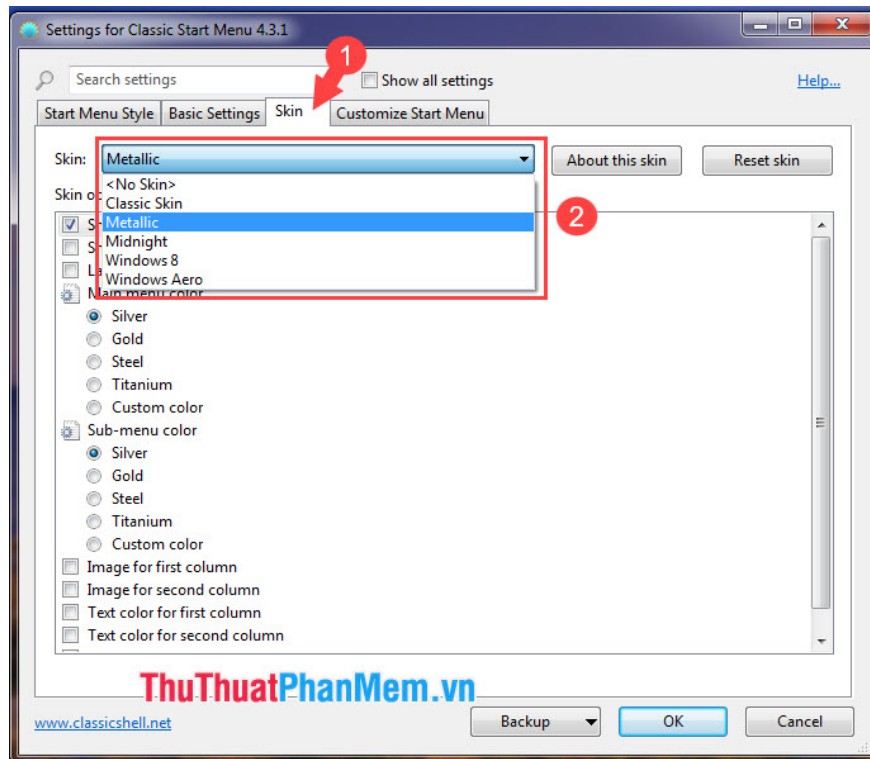
**Step 3: Go to Basic Setting** . Here, you can change the functions of the shortcut, displaying hidden menus.



**Step 4: Switch to Skin tab (1)** , we can customize the interface of the Start Menu.

You click on **Skin (2)** and select the interface according to your preferences:

- : Do not use the interface
- **Classic Skin:** Classic interface
- **Metallic:** Metal style interface (metal)
- **Midnight:** The dark interface
- **Windows 8:** Windows 8 interface
- **Windows Aero:** Aero interface on Windows Vista, Windows 7

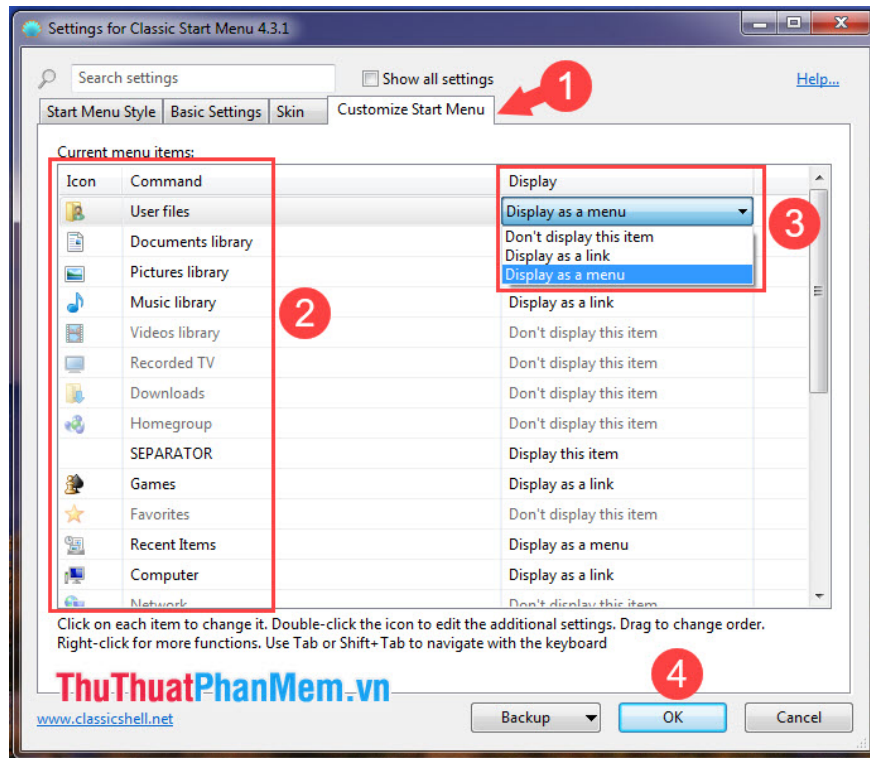


**Step 5:** Switch to the **Customize Start Menu** tab to customize the icons and functions of the icons displayed in the Start Menu.

On the left, we change the folder icons. On the right, we will use to change options like:

- **Do not display this item:** Do not show this section
- **Display as a link:** Display the folder and we click on that folder to open the subfolders inside.
- **Display as a menu:** Display the main folder and subfolders inside.

Once completed, click **OK** to save.



With Classic Shell, you can customize the Start Menu interface quickly and simply, refreshing the boring interface of the default Start menu. Have you tried yet? Download Classic Shell, follow the instructions in the article and share your feelings about this software!

You finished reading the article "**What is Classic Shell? How to use Classic Shell to customize Menu on Windows 10, 8, 7**" edited by the [TipsMake](#) team. We hope this article has provided you with many useful tech tips and tricks. You can search for similar articles on tips and guides. Thank you for reading and for following us regularly.