

What is Catalyst Control Center (CCC.exe)?

Catalyst Control Center is a utility that comes with drivers, which helps AMD graphics cards work. It appears as CCC.exe in the user's Task Manager and in most cases, you will never have to worry about this.

Catalyst Control Center is a utility that comes with drivers, which helps AMD graphics cards work. It appears as CCC.exe in the user's Task Manager (Task Manager) and in most cases you will never have to worry about this. You may have to dig deeper into installing Catalyst Control Center if you play games on your computer, but pay close attention. In general, the safest thing is to not touch it.

Learn about Catalyst Control Center (CCC.exe)

1. What is Catalyst Control Center?
2. How to install CCC.exe on the computer?
3. Is CCC.exe a virus?
4. How to fix problems related to CCC.exe

What is Catalyst Control Center?

The Catalyst Control Center starts when you turn on your computer, because it must run in the background to manage the operation of the AMD video card in the machine. The same software was also used to manage ATI video cards before AMD purchased ATI, so older computers with ATI cards may also have CCC.exe installed.

If you do not play games on your computer, you may never have to care about Catalyst Control Center, but on the contrary, everything is quite simple. This software allows you to check the driver updates for the video card and manage the operation of this card.

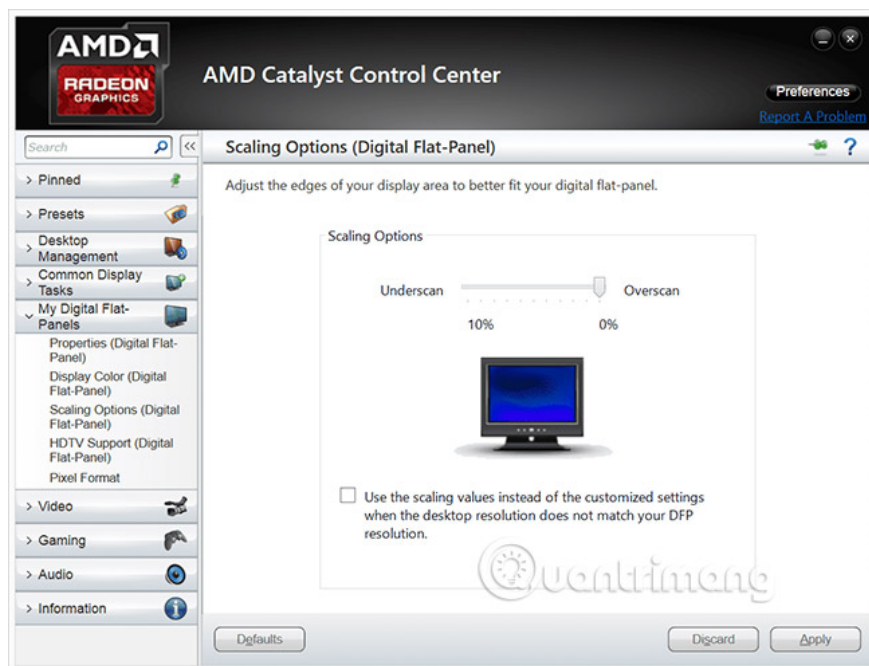
Some basic things you can do with Catalyst Control Center include changing the resolution or screen area and refresh rate of the screen. There are also a lot of more advanced settings, but mostly useful for gamers. For example, you can change anti-aliasing settings in the Catalyst Control Center, which means you can remove jagged edges from 3D objects.

If you have a laptop that contains 2 video cards, you can also use Catalyst Control Center to switch between them. This is useful if you notice poor gaming performance (this may be due to the fact that the game you are playing does not use a high-power AMD video card).

How to install CCC.exe on the computer?

If you already have an AMD video card, CCC.exe is usually also installed with drivers that help make this card work. Although you can only install drivers separately without Catalyst Control Center, it is often much more common to install them together into one package. Other executable files, such as MOM.exe, are also included in this package.

In other special cases, you may have been infected with a virus or malware, a fake thing that makes Catalyst Control Center. If you have an Nvidia video card, and your computer has never had an AMD card installed, chances are you've fallen into this situation.



Is CCC.exe a virus?

Although CCC.exe is not a virus when you download directly from AMD, the virus can be disguised as CCC.exe. Any anti-virus or anti-malware program will recognize this type of counterfeit software, but you can also find the problem yourself, by looking at the location of CCC.exe on your computer. friend. You can do this in six simple steps:

1. Press and hold **Control + Alt + Delete** on the keyboard.
2. Click **Task Manager**.
3. Click the **Processes** tab .
4. Find **CCC.exe** in the **Name** column .
5. Record the content in the corresponding **Command Line** column.
6. If there is no command line column, right-click the **Name** column , and then left-click the **Command Line**.

If the copy of CCC.exe on your computer is legitimate, the location given in the **Command Line** column will be something similar to **Program Files (x86) / ATI Technologies** . Whenever CCC.exe appears in another location, it is a sign that it may be malware.

How to fix problems related to CCC.exe

When CCC.exe has a problem, it is likely that an error message will appear on your screen. Some of the most common error messages include:

1. CCC.exe has stopped working
2. CCC.exe has experienced a problem
3. Catalyst Control Center: application host has encountered an error and needs to close

This usually happens when something goes wrong, and the most common solution is to fix the installation of Catalyst Control Center or completely reinstall it. In older Windows versions, you can do this in the **Programs and Features** section of **Control Panel** . In Windows 10, you need to navigate to **Apps and Features** in **Windows Settings**.

The options are easier than just downloading the latest version of Catalyst Control Center directly from AMD. When you run the Catalyst Control Center installer, it will delete the corrupted version and install the active version.

Because Catalyst Control Center is not an essential utility, you can also prevent it from running when your computer starts up. This will prevent you from accessing any advanced settings for your video card, but in return it also blocks any annoying error messages.

See more:

1. What is LockApp.exe on Windows 10?
2. Unusually high CPU error correction due to TiWorker.exe on Windows 10 / 8.1 / 8
3. How to fix 0x80080005 error when updating Windows 10

You finished reading the article "**What is Catalyst Control Center (CCC.exe)?**" edited by the [TipsMake](#) team. We hope this article has provided you with many useful tech tips and tricks. You can search for similar articles on tips and guides. Thank you for reading and for following us regularly.