

What is BitLocker? How to turn it on and off on Windows 10, 11

Encryption when sharing online has now been applied on computer hard drives to secure personal data with BitLocker software. In addition to securing personal information, you can also use BitLocker to prevent hackers from attacking and accessing your device. Follow TipsMake's article below to know what BitLocker is.

Not only Win 10, Windows 11 is also integrated with BitLocker software, which helps protect computer users' data. Hackers will not be able to read data on encrypted drives, avoiding information leaks. individual.

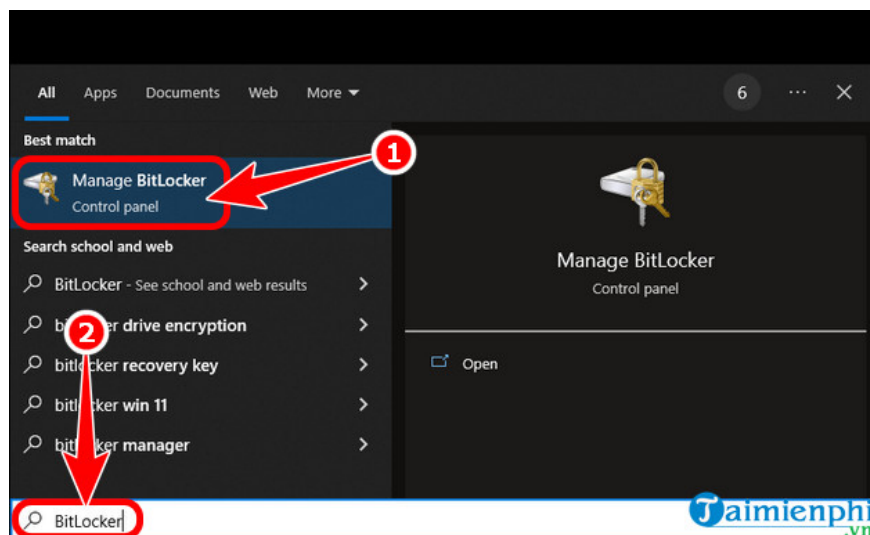
I. What is BitLocker?

BitLocker is the best and free data encryption tool on Windows operating systems. In addition to hard drive encryption, BitLocker can also protect storage devices such as USB. However, BitLocker can only work on Windows 10, 11 operating systems and computers with TPM 2 (Trusted Platform Module) chips.

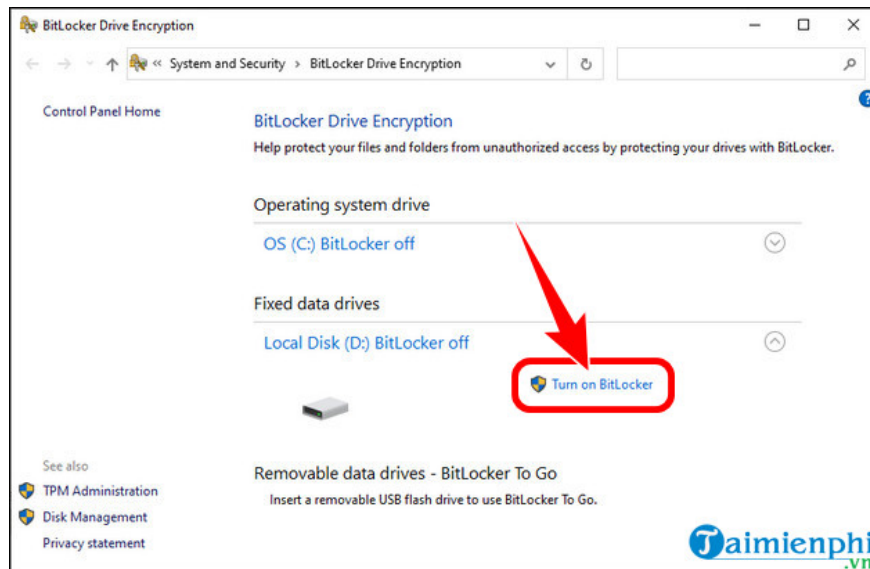
II. How to open BitLocker on Windows 10, 11

2. Detailed instructions

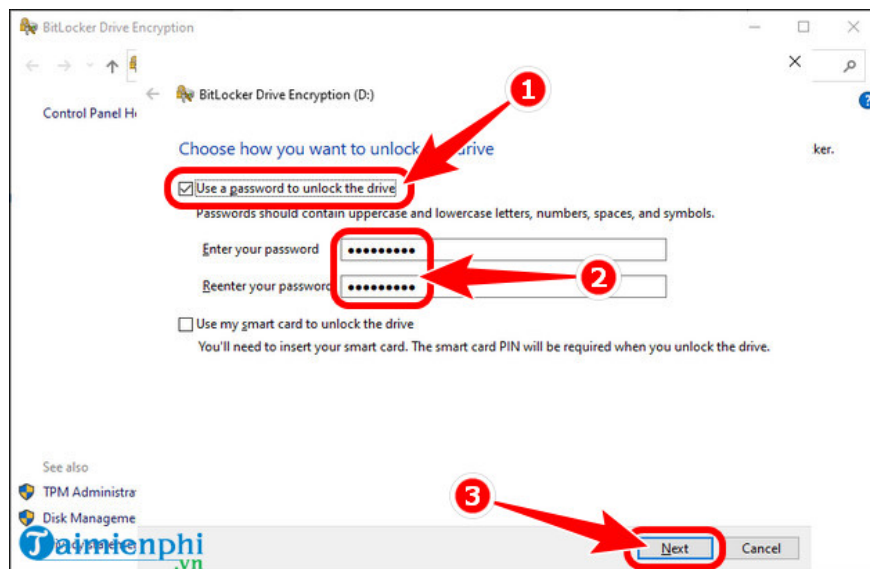
Step 1: Press the key combination **Windows + S** , enter **BitLocker** on the search tool bar => Click **Manage BitLocker** .



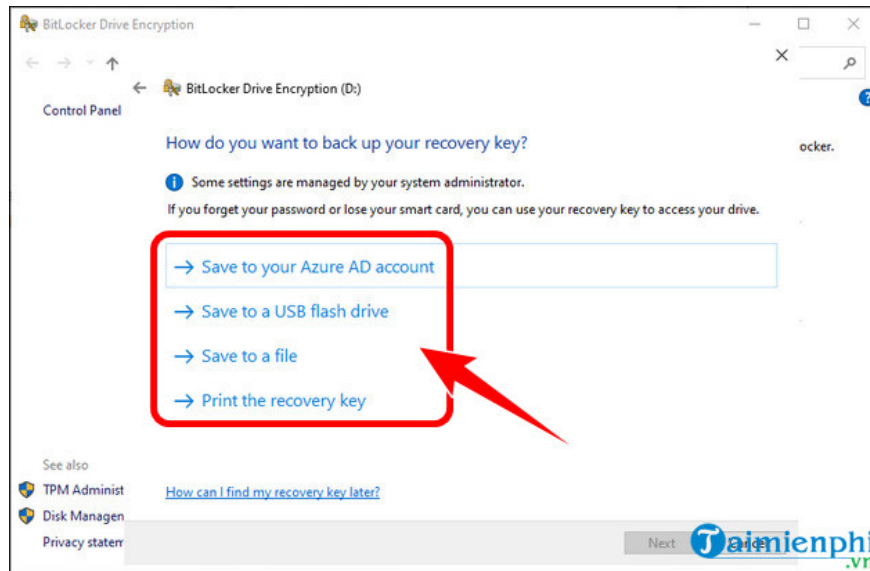
Step 2: Select **the drive** you want to encrypt, then click **Turn on BitLocker** .



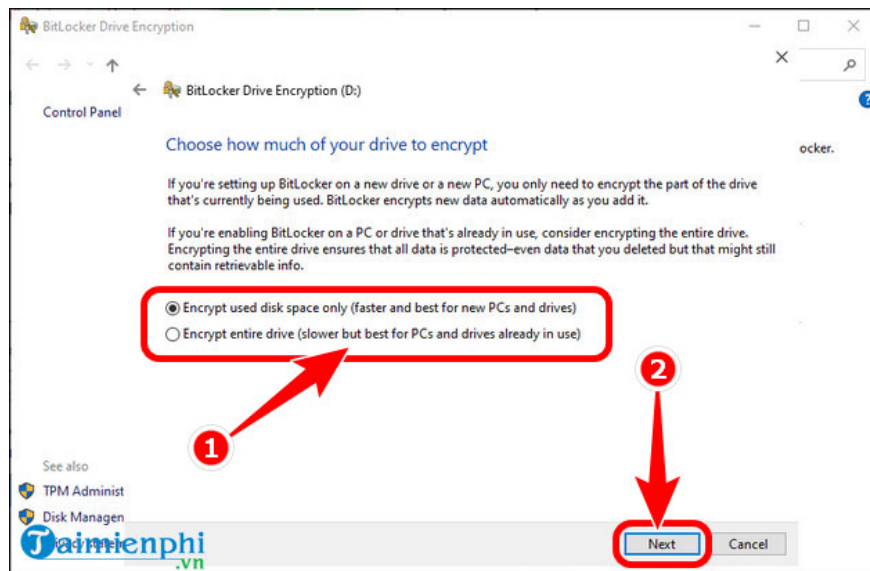
Step 3: Check the box **Use a password to unlock the drive** => enter **the computer password** => press **Next** .



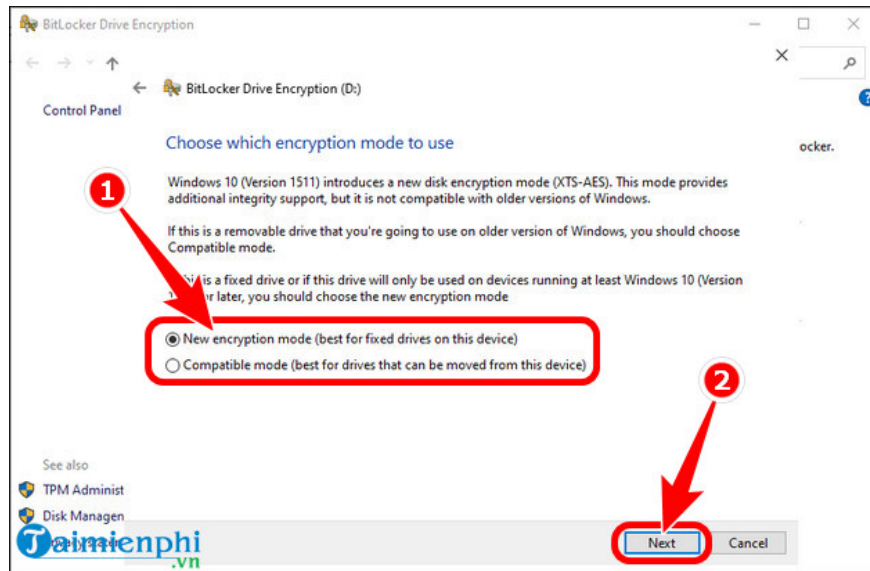
- **Choose a key recovery** method in case you forget your BitLocker password.



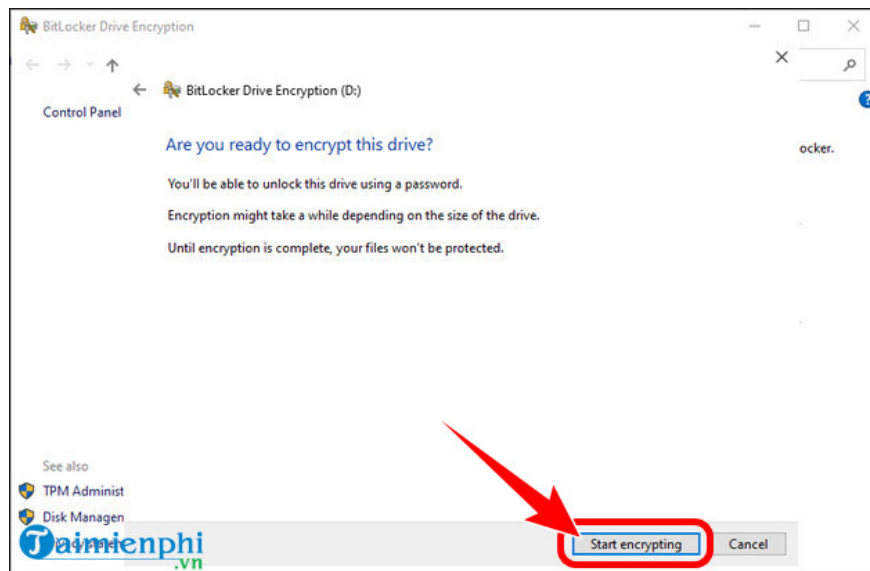
- Option to encrypt the drive in use or the entire Drive => Next .



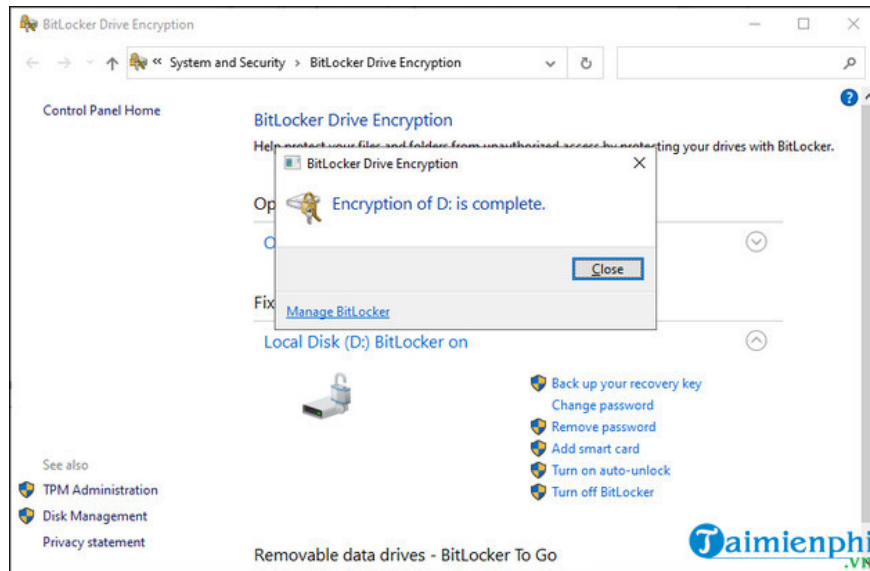
- Select encryption mode => click Next .



Step 4: Click **Start encrypting** .



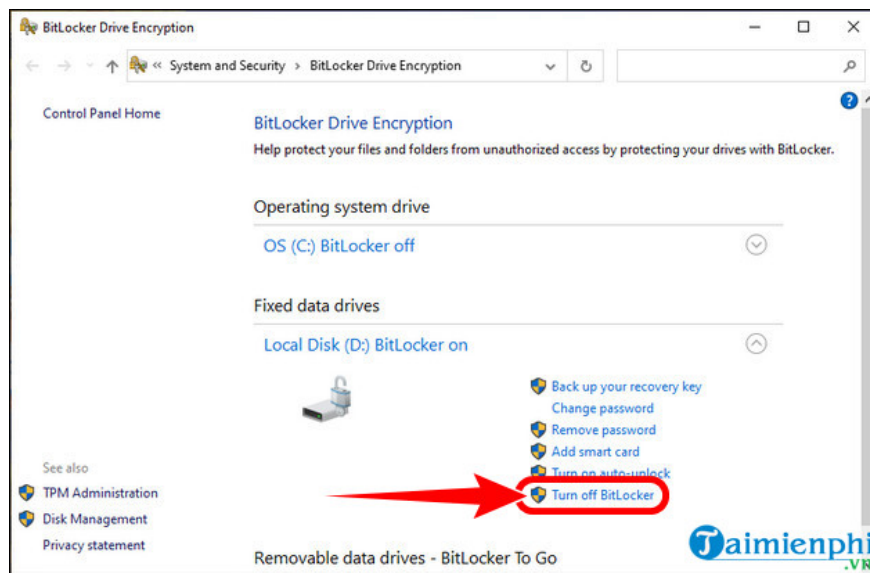
- Wait for the process of **opening BitLocker on Windows** , the message **BitLocker Drive Encryption** completed will display as shown below.



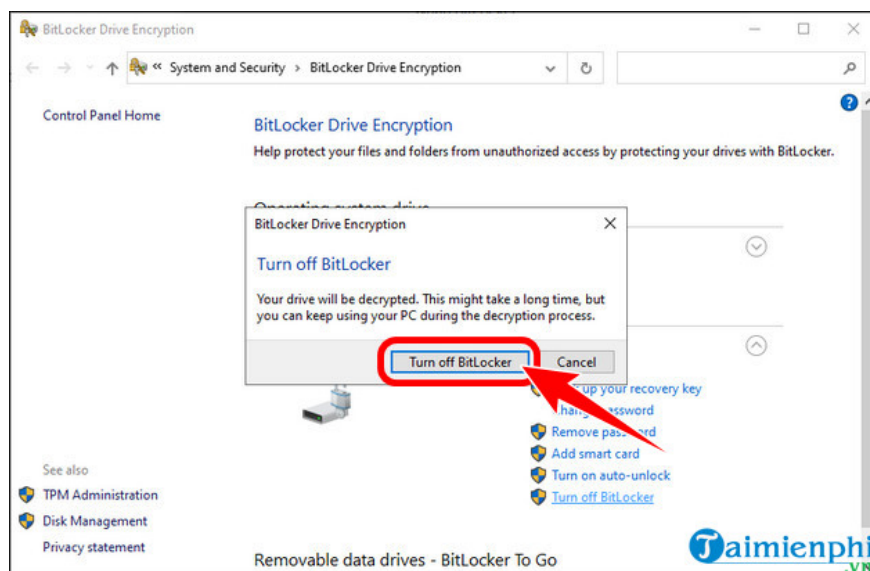
III. How to turn off BitLocker on Windows 10, 11

2. Detailed instructions

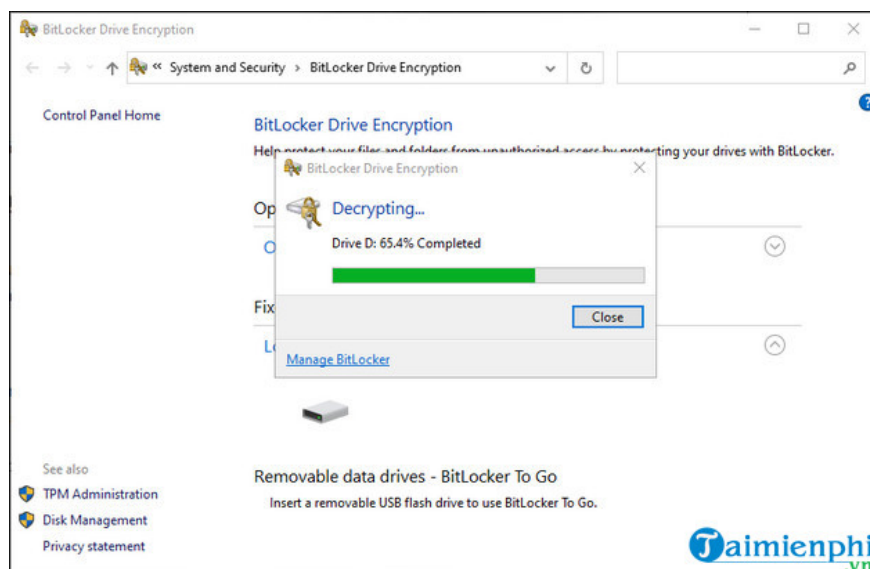
Step 1: Return to the **Manage BitLocker** interface , click **Turn off BitLocker** .



Step 2: Click **Turn off BitLocker** .



Step 3: The process of **turning off BitLocker on Windows** will take a few minutes, you just need to wait for the system to finish running.



In addition to turning off hard drive encryption with Manage BitLocker, you can also **turn off BitLocker on Windows 11** through the Right-click Menu, Settings Menu, Command Prompt and PowerShell. Readers, please refer and choose the most effective and fastest method to protect your computer data.

For users using Windows 7 or 8, you will need to **create a USB Boot Win 10** version upgrade with only a USB with a capacity of 4GB or more if you want to use BitLocker software, encrypting personal information.

You finished reading the article "**What is BitLocker? How to turn it on and off on Windows 10, 11**" edited by the [TipsMake](#) team. We hope this article has provided you with many useful tech tips and tricks. You can search for similar articles on tips and guides. Thank you for reading and for following us regularly.