

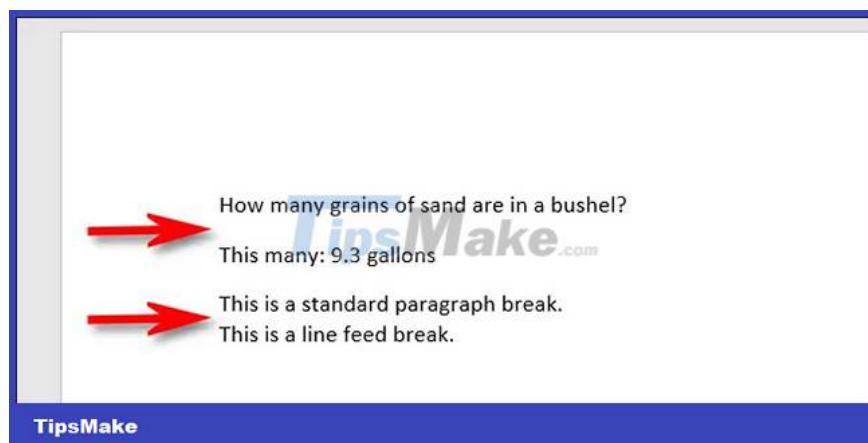
What does Shift + Enter do in Word? Can it be replaced?

By default, when you press Enter in Microsoft Word, your cursor jumps two lines down. But why is that?

Is there a way to make the cursor jump only one line? **This is where the Shift + Enter** shortcut comes in and shines.

Line breaks and paragraph breaks

You may not be aware of Words that automatically wrap text to a newline by default, so you usually won't need to enter line breaks manually (as on a classic typewriter), unless you're setting a line break. number of special text formats. So Microsoft made the Enter key perform a paragraph break by default, like inserting two line feeds at once. In the example below, the first arrow points to a paragraph break and the second arrow to a regular line break.



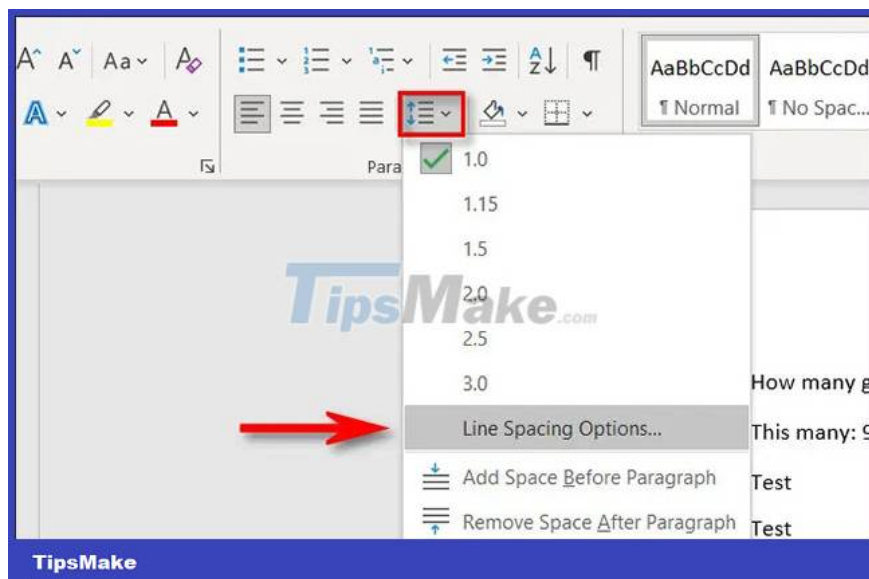
If you press Shift + Enter in Word, you get a line break (also known as a line feed). The cursor will go down to the next line instead of jumping down 2 lines to start a new paragraph like when pressing Enter. Also, if you press Ctrl + Enter, you will insert a page break, bringing the cursor to the top of a new page.

In simple words, when you want to start a new piece of text in Word, you press Enter. If you want a simple line break, Shift + Enter is your choice.

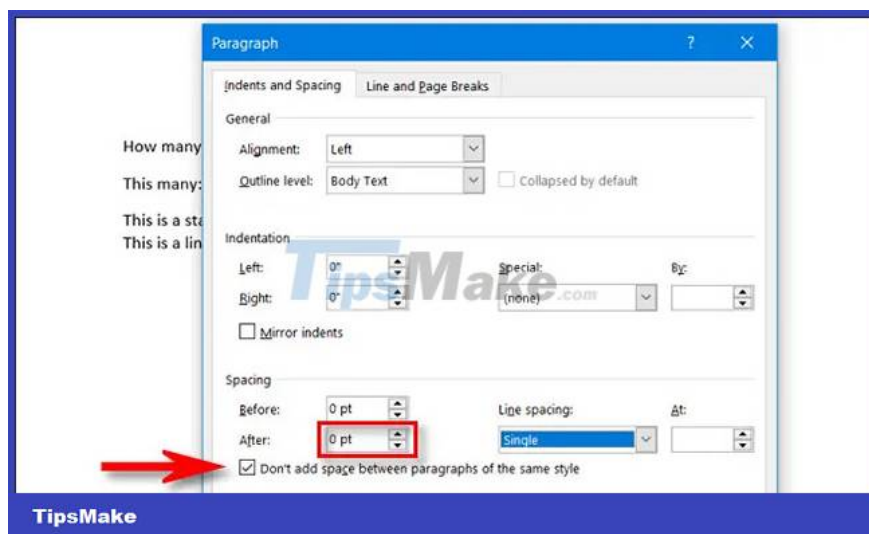
How to set Enter for single line break

If you're not familiar with using Shift + Enter for regular line breaks, you can set and change several options to make pressing Enter perform a line break instead of the default.

First, click the ' **Home** ' tab, then select ' **Line Paragraph and Spacing** ' (looks like five horizontal lines with up and down arrows next to them). When the menu opens, click on ' **Line Spacing Options** '.



In the ' **Paragraph** ' window that opens, look for the ' **Spacing** ' section. Set the ' **After** ' value to ' **0 pt** '. Next, check the box next to the option ' **Don't add space between paragraphs of the same style** '.



If you want to make this setting the default, click ' **Set as Default** ' at the bottom of the window. Otherwise, click ' **OK** ' and the changes will apply only to the open document. The next time you press Enter, you will see the mouse cursor jump down one line, similar to when pressing Shift + Enter

You finished reading the article "**What does Shift + Enter do in Word? Can it be replaced?**" edited by the [TipsMake](#) team. We hope this article has provided you with many useful tech tips and tricks. You can search for similar articles on tips and guides. Thank you for reading and for following us regularly.