

What causes a laptop screen to be dark or blurry?

Many people wonder what causes a dark or blurry laptop screen, resulting in poor display quality and reduced productivity for work and entertainment. To fix this problem, you can follow the instructions below to resolve the issue of a dark or blurry laptop screen.

Readers may encounter problems such as **blurry**, faded, patchy, distorted, pixelated, or displaying horizontal or vertical lines on their laptop screens, making them difficult to use. This article from TipsMake will outline some of the causes of a dim or blurry laptop screen for users to refer to.



How to fix a blurry or dark laptop screen.

Laptop screen dimming/faint

- Power Saving Mode

Laptops have different power-saving configurations to extend battery life after the user disconnects the power cord from the AC source. By default, the power-saving plan will dim the laptop screen to conserve battery power when the laptop is running on battery.

A dim or blurry laptop screen can also be caused by this. Sometimes, laptops can freeze in Power Saving Mode, with the screen remaining dim even after being woken up. In this case, simply restarting the computer and resetting Power Saving Mode should resolve the issue.

- Change to Power Saving Mode

To change Power Saving Mode, type "power settings" into the Start Menu search box to open the Power Options window, or alternatively, right-click the battery icon on the Taskbar and select Power Options.

Here, find and click the "Dim the display" option to edit the settings, then click "Change plan settings". Change the value of "Dim the display" to "Never" and then click "OK".

- Hardware issues

Sometimes laptop hardware can malfunction. If you notice your laptop screen getting dimmer and dimmer, it's time to replace it.

To check if a dim or blurry laptop screen is a hardware issue, try connecting an external monitor to your laptop and see if the screen remains dim. If it does, it's likely that software settings are the culprit, or it could be a hardware problem. In this case, you'll need to take your laptop to a computer or laptop repair center for assistance.

- Due to inappropriate screen brightness settings

If you adjust the screen brightness to a low level, the laptop screen will become dark and blurry, making it difficult to see. This is why people often set it to save battery power, but then forget to change it back, or perhaps someone else has set it to the default.

- The monitor's backlight is faulty or flickering.

A faulty or flickering backlight in the screen will cause the laptop screen to appear dimmer or blurrier compared to when it was new. Currently, most laptops have a brightness of 1000 cd/m². If the backlight malfunctions, flickers, or is damaged in any way, it's very likely that the brightness will drop below 1000 cd/m², resulting in a very dark screen even when you've adjusted the brightness to the maximum.



A dim or blurry laptop screen can significantly reduce your productivity.

- Due to poor performance of the high-voltage board.

The high-voltage board, also known professionally as LCD inverters, is where the voltage is generated to power the backlight. Similar to issues like blurry, faded, or patchy laptop screens, a malfunctioning high-voltage board

will result in a dark or dim laptop screen.

- Laptop LCD screen is malfunctioning.

Your screen may have reached the end of its lifespan, or it may have been dropped, or become weak after prolonged use, leading to issues such as flickering, shaking, dimming, or blurring on your laptop screen.

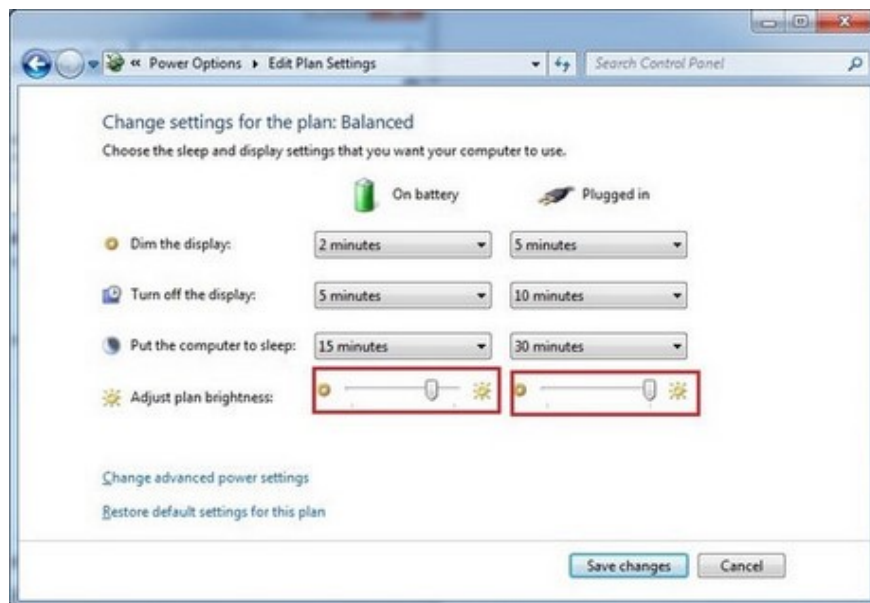
- The screen refresh rate is incorrect.

The screen refresh rate must be set correctly to achieve high efficiency and good image clarity. Generally, a screen refresh rate of 50, 60, 70, or 75Hz, depending on the type of monitor, will yield the best results.

Above are 5 main reasons why your laptop screen might be dim or blurry, causing eye strain and making it difficult to use. Additionally, you can also check the display cable, graphics card, and video card to identify the cause.

How to fix a dark or blurry laptop screen.

First, check your monitor's brightness settings. If it's too low, readjust them to restore the screen brightness to its original setting; if you don't know how, you can refer to the guide on adjusting screen brightness for Windows 7 and 8 laptops on TipsMake.



In addition, check if your monitor's refresh rate is correct, or more accurately, appropriate. If not, reset it using the following steps: right-click on " **Desktop => Properties => Settings => Advanced => Monitor** " and set it to the desired level. It can be from 50, 60, 70 to 75Hz. Please reset it.

Additionally, to fix a dark or blurry laptop screen caused by faulty or flickering high-voltage components, a poorly functioning high-voltage board, or a defective LCD screen, users can take their laptop to reputable warranty centers or repair shops for inspection, repair, or replacement.

You finished reading the article "**What causes a laptop screen to be dark or blurry?**" edited by the [TipsMake](#) team. We hope this article has provided you with many useful tech tips and tricks. You can search for similar articles on tips and guides. Thank you for reading and for following us regularly.
