

What causes a hard drive to be lost on a computer?

Losing a drive on a computer is not uncommon, usually due to software conflicts in the operating system. Instead of taking your computer to a repair shop, you can completely recover your data and restore the lost hard drive partition yourself with just a few simple steps.

What causes a hard drive to be lost on a computer?

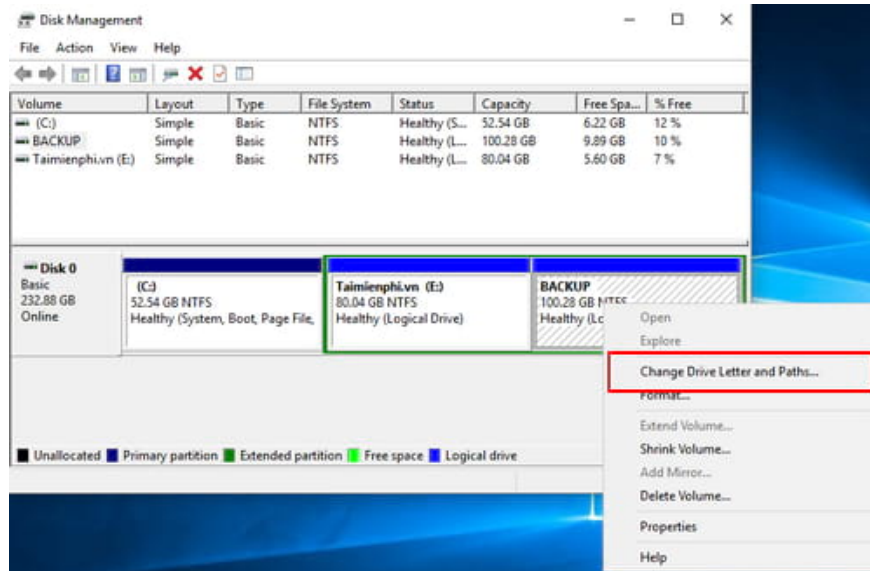
Typically, hard drive partition loss occurs due to various reasons, both subjective and objective, such as someone accessing your computer and hiding a drive, or a drive disappearing after installing Windows or restoring a ghost image. While Windows access remains normal, the data stored on the drive cannot be read, viewed, or retrieved. This situation isn't overly difficult, but it's not simple either if you're not computer savvy. With the following steps, you can recover and unhide a hidden drive without needing a computer technician. Let's get started!



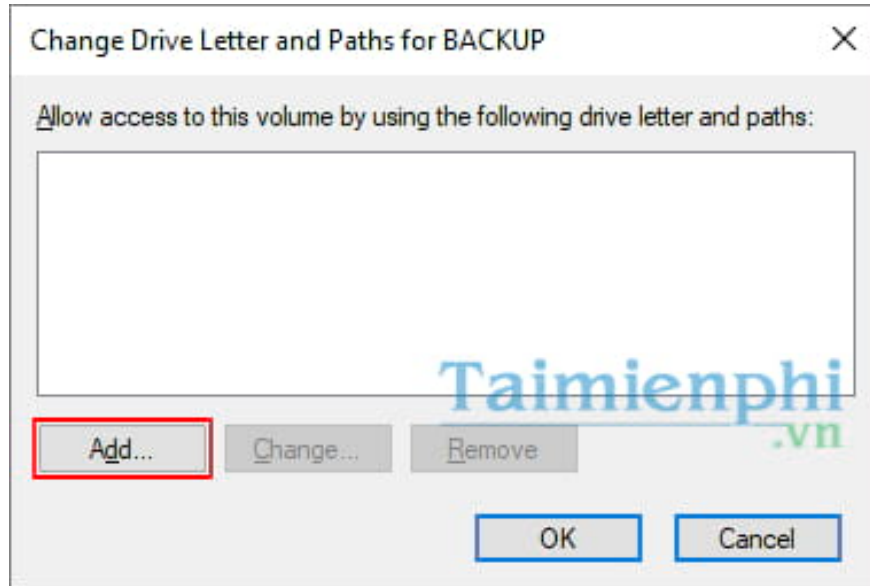
Troubleshooting a missing drive error on a Windows computer.

How to show a hidden hard drive

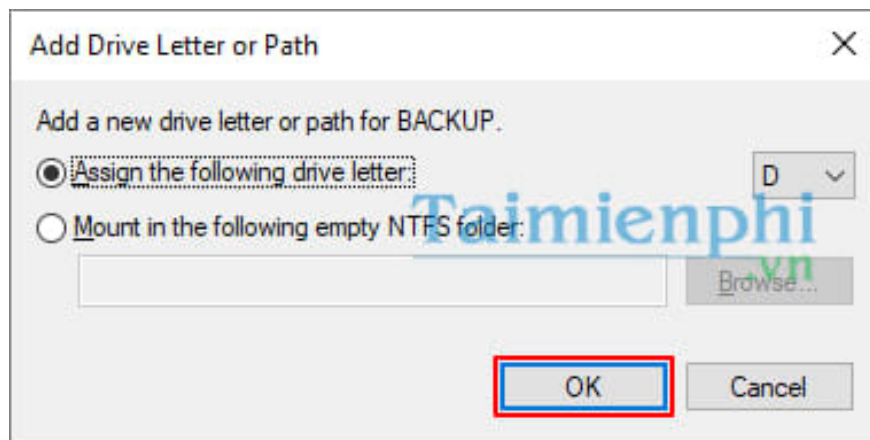
Step 1: To make hidden drives visible, first, to avoid potential errors, you need to disconnect all external devices from your computer, such as USB drives, external hard drives, and memory cards. *Step 2:* On the Windows interface, press the **Windows + R key combination to open the Run dialog box** and type the command **diskmgmt.msc**, then press **OK** or **Enter** .



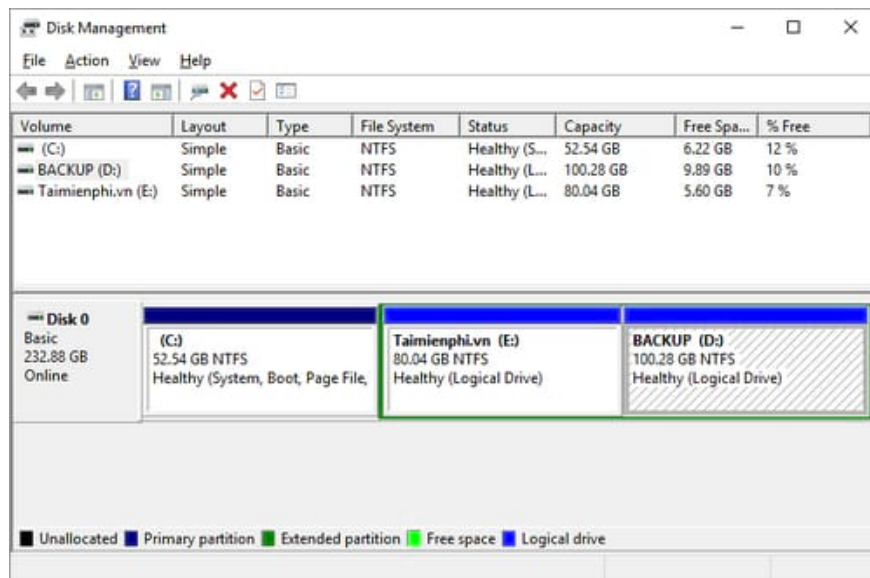
Step 5: A new window will appear; select **Add**.



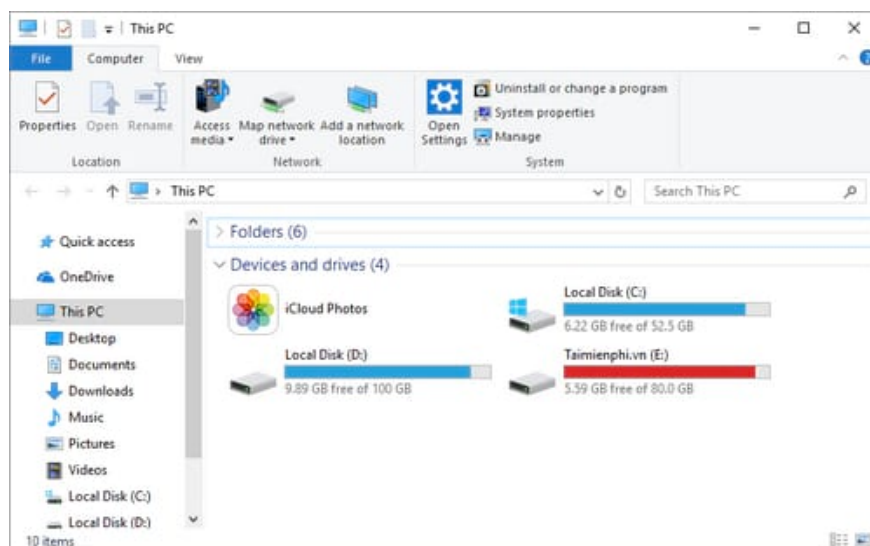
Step 6: Next, click **OK** (you can also customize the drive letter here if you want; on my computer, it's defaulted to D).



Your D drive has been assigned a name immediately.



Now, go back to My Computer by pressing the **Windows** + **E** key combination . You will see that the hidden drive has been restored, and all the files on it are intact.



Thus, with the instructions above, Taimienphi has shared with readers a simple way to reveal a lost hard drive without losing data. Hopefully, after completing this, you will gain some additional knowledge and improve your computer security to prevent others from tampering with your computer. For example, you can refer to the method of setting a Windows 10 password that we shared earlier, which will help make your computer more secure, preventing prying eyes from those around you or someone from accessing your data.

Furthermore, after prolonged use, your hard drive may experience reduced quality and the occurrence of hidden hard drive errors. Therefore, you should maintain your hard drive and repair any bad sectors. If you don't know how to do this or where to start, you can refer to our guide on repairing bad sectors using HDD Regenerator, a trusted method used by many users. Good luck!

You finished reading the article "**What causes a hard drive to be lost on a computer?**" edited by the [TipsMake](#) team. We hope this article has provided you with many useful tech tips and tricks. You can search for similar articles on tips and guides. Thank you for reading and for following us regularly.