

Ways to reset BIOS password or remove BIOS password

Clear the BIOS password, set the BIOS to default mode in case you forget the BIOS password, buy an old device without knowing the BIOS password, here are ways you can use it.

Clear the BIOS password, set the BIOS to default mode in case you forget the BIOS password, buy an old device without knowing the BIOS password, here are ways you can use it.

Have you ever encountered a forgotten BIOS password set for the motherboard? Or buy an old computer to reset Win then it will not be able to access the BIOS because the BIOS requires a password and you will not know about it. In short, now you need to remove the BIOS password or set the BIOS to manufacturer mode to access or reset the BIOS password.

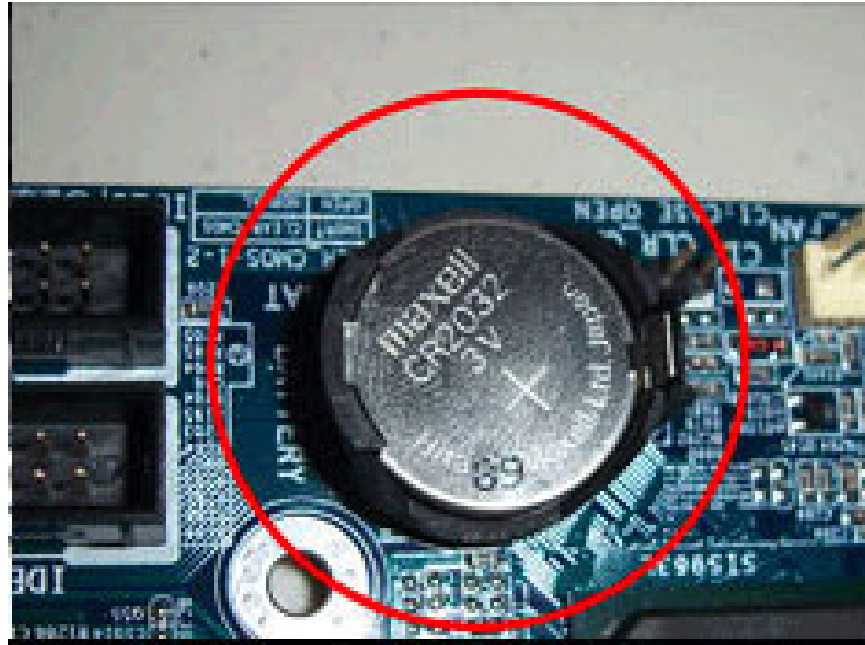
Do not be afraid, the way to delete or remove BIOS password is not difficult, there are many solutions to choose, see details below.

What is BIOS password?

BIOS password information is usually stored by CMOS battery. BIOS password is also said to be a security method, it can protect your system against unauthorized people, making them unable to make hardware configuration changes on the device (Wallet For example, allow you to request a password before accessing BIOS setup).

Method 1: Remove the CMOS battery to reset the BIOS password

This method of removing BIOS password is more suitable for desktop users. It should not be applied to laptop computers unless you have enough experience to be able to confidently work with your laptop or laptop beyond the warranty period.



To remove the BIOS password with a CMOS battery, the first thing you need to do is unplug all power supplies and USB cables, then open the case, place it neatly on the floor or tabletop. Looking closely at the motherboard you will see the CMOS battery, refer to the figure above for easy identification.

Once you find the CMOS battery, remove the battery and leave it outside for 10 to 25 minutes before reinstalling it. The reason for this is because the computer may still have power from some components such as capacitors even though all power supplies have been drained. Therefore we need to wait until this charge is completely discharged.

Then insert the CMOS battery again. Now all BIOS passwords will be deleted and all hardware settings will be set to factory defaults. In some cases, if you get an error message during the boot process then you need to perform 'Load BIOS Defaults' in the BIOS and save your changes before exiting.

Method 2: Use the manufacturer's backdoor

BIOS password can be easily reset by opening the case and removing the CMOS battery. However, this operation will disconnect the BIOS power and everything in memory will be erased. It's easy on the PC, but it's hard for tablets, ultrabooks or laptops.

There is an easier way for users who are not familiar with the hardware, which is to use the backdoor built by the manufacturer. Blogger Dogbert developed a provider password calculator website, you can use it to find your default BIOS password, through the following steps:

1. Turn on the computer and enter the wrong password 3 or more times.
2. A display message indicates that your system is disabled or the password is corrupted.
3. This notification will come with some. Write down this number because it will help you find the backdoor password of the BIOS.
4. Open the BIOS Master Password Generator website: *BIOS-pw.org* on another computer or phone.
5. Enter the number you just saved in the box below Enter your code> Get password to see the list of computers and passwords. Try the password for your most similar computer.

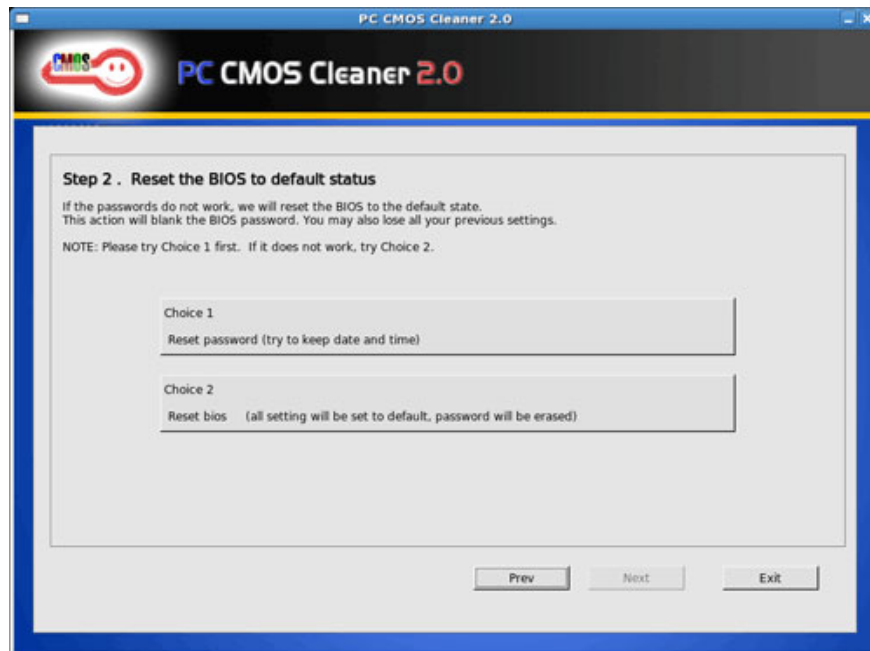
6. Restart the computer into the BIOS password screen and enter the password.

Some Lenovo or IBM computers will require hardware reset to be able to change the BIOS password, in which case you should call the customer support center of the place of purchase or the company for the best help.

After finding out more, I found the BIOShelper.com website supports more computer vendors, if the website does not give the BIOS password for the machine, you can try BIOShelper.com. However, this page does not return the password on the web interface, but you need to provide an email to get the password.

Method 3: Set BIOS password using PC CMOS Cleaner

PC CMOS Cleaner is the best BIOS password remover for all desktops, servers and laptops. PC CMOS Cleaner can recover, delete, decrypt and display the monitoring password stored in the BIOS whatever the motherboard you are using.



All you need here is the ISO file named ' **PCCMOSCleaner_Free.ISO** ', you need to burn the CD using the **ISO Image** recording software before using it. Boot with the CD containing the ISO file. When loaded, the software will display the password of any BIOS or set the BIOS to the default state. It is a very useful tool for users to forget their BIOS password, or delete BIOS password from old computers purchased from various sources.

1. Support all personal computers x86, x86_64
2. Support most BIOSes, such as AWARD, AMI, Compaq, Phoenix, Samsung, IBM, Compaq, DTK, Thinkpad, Sony, Toshiba, .
3. Displays the monitoring password of the BIOS
4. Remove BIOS password (will be set to the default state, need to reset the date)
5. Set BIOS to default state

Method 4: Use CMOS De-Animator to "hack" the BIOS password

CMOS De-Animator is considered as a tool to hack or reset BIOS password from within Windows. The latest 2 .exe versions of CMOS De-Animator are compatible with both 32bit and 64bit versions of Windows. TipsMake.com has instructions on this software, you can refer here.

Method 5: Try using another manufacturer's 'back door' password

This is the final way if the above two methods cannot help you remove the password.

Some BIOS manufacturers reserve some back door password for their BIOS system, the purpose is for the technician to use them to access the BIOS when the hardware is being served. However, BIOS manufacturers often change their 'back door' password over time.

Password for the 'back door' BIOS for AMI

AMI's back door BIOS password includes: AMI, AAAMMMIII, AMI? SW, AMI_SW, BIOS, CONDO, HEWITT RAND, LKWPETER, MI and PASSWORD.

Back-door BIOS password of Award

The back-door BIOS password for Award includes 8 spaces. Other reported back door passwords include 01322222, 589589, 589721, 595595, 598598, ALFAROME, ALLY, ALLy, aLLY, aLLy, aPAf, award, AWARD PW, AWARD SW, AWARD? SW, AWARD_PW, AWARD_SW, AWKWARD, awkward, BIOSTAR, CONCAT, CONDO, Condo, condo, d8on, djonet, HLT, J256, J262, j262, j322, j332, J64, KDD, LKWPETER, Lkwpeter, PINT, pint, SER, SKY_FOX, SYXZ, syxz, SDA, ZAAAADA, ZAAADA, ZBAAACA and ZJAAADC.

Password of the back door BIOS of Phoenix

Backdoor BIOS passwords for Phoenix include: BIOS, CMOS, phoenix, and PHOENIX.

Hopefully, these can help you get back into the BIOS when you forget your password or don't know your BIOS password.

See more:

1. Forget Windows 10 password, this is how to break password Win 10 without using 3rd tool
2. Create Windows Password Reset Disk on Windows 7 with USB Flash Drive
3. Instructions for creating Password Reset Disk on Windows 8
4. Create Password Reset Disk with USB Flash Drive on Windows 10

You finished reading the article "**Ways to reset BIOS password or remove BIOS password**" edited by the [TipsMake](#) team. We hope this article has provided you with many useful tech tips and tricks. You can search for similar articles on tips and guides. Thank you for reading and for following us regularly.