

Ways to install Microsoft Excel on Linux

Converting from Windows to Linux is very simple, but there are a number of issues that are incompatible software. What if you want to use Microsoft Excel on Linux? Look at this article and find the answer!

Converting from Windows to Linux is very simple. But there are some problems that arise when you need to perform a specific task, such as running applications or video games and discovering incompatible software.

A clear example is Microsoft Office. Quantrimang showed you how to install Microsoft Office in Linux, but what if you just want to use Microsoft Excel? So the following article will tell you some ways to install Microsoft Excel on Linux computers.

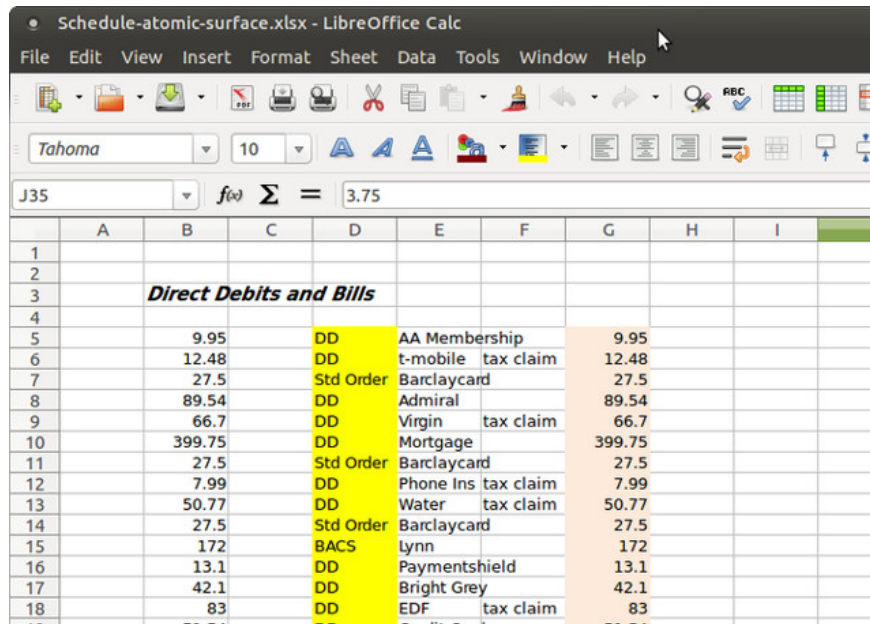
Ways to install Microsoft Excel on Linux

1. Alternatives to Excel installation
 1. Run LibreOffice Calc
 2. Use Microsoft Office Online
 3. Run Excel in a virtual machine
2. Install Microsoft Excel on Linux with Wine and PlayOnLinux
3. Install Excel Viewer on Linux

Alternatives to Excel installation

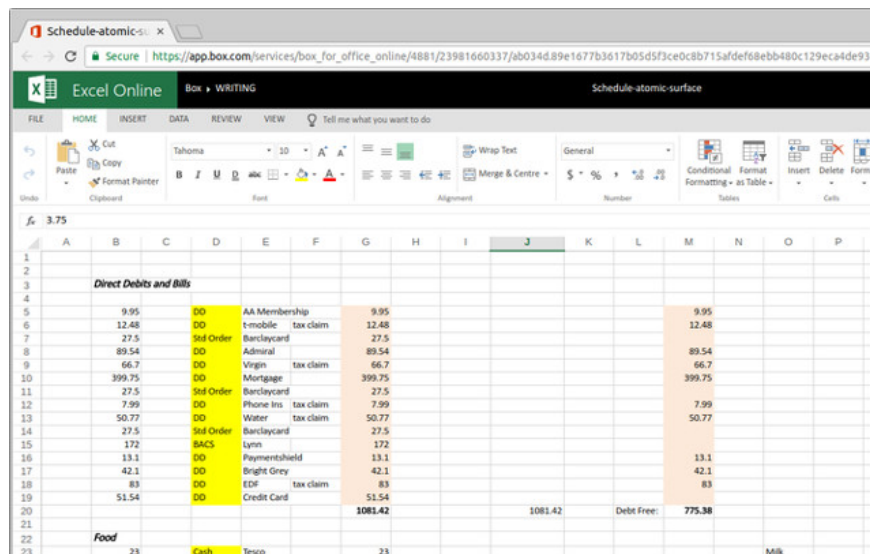
You do not have to install Excel to open an XLS or XLSX workbook. These are alternatives to installing Excel.

1. Run LibreOffice Calc



LibreOffice is the most popular alternative to Microsoft Office on Linux systems. Most Windows users switch to not noticing the difference between Calc and Excel. However, one drawback is that it cannot print spreadsheets correctly.

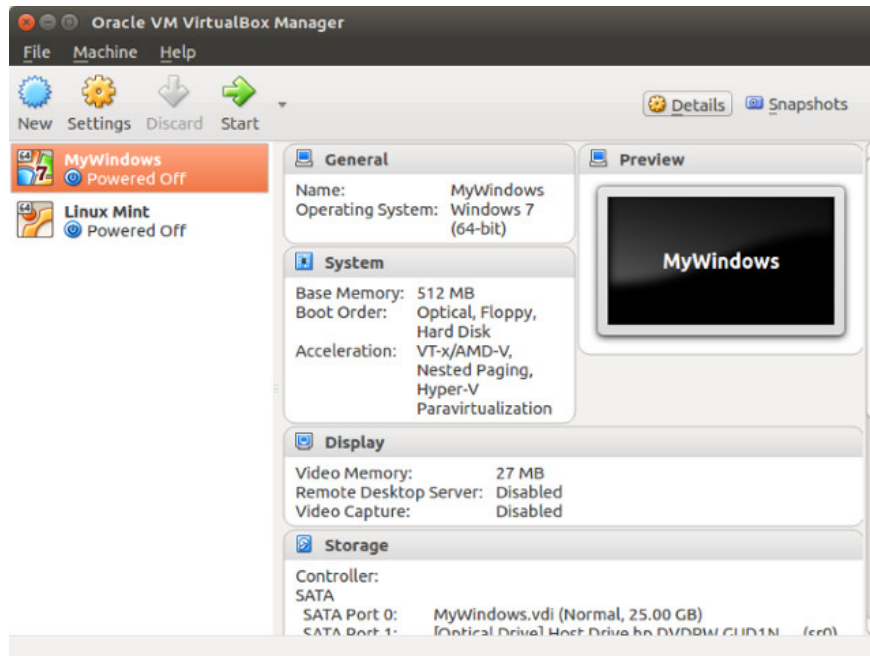
2. Use Microsoft Office Online



Microsoft Office browser version is very useful, which is the best thing Microsoft ever did. It is completely free and users can handle documents, using email, spreadsheets and presentations. Honestly, this is a better solution than Google's online Office suite and easy to use.

1. How to download Microsoft Office version completely free?

3. Run Excel in a virtual machine



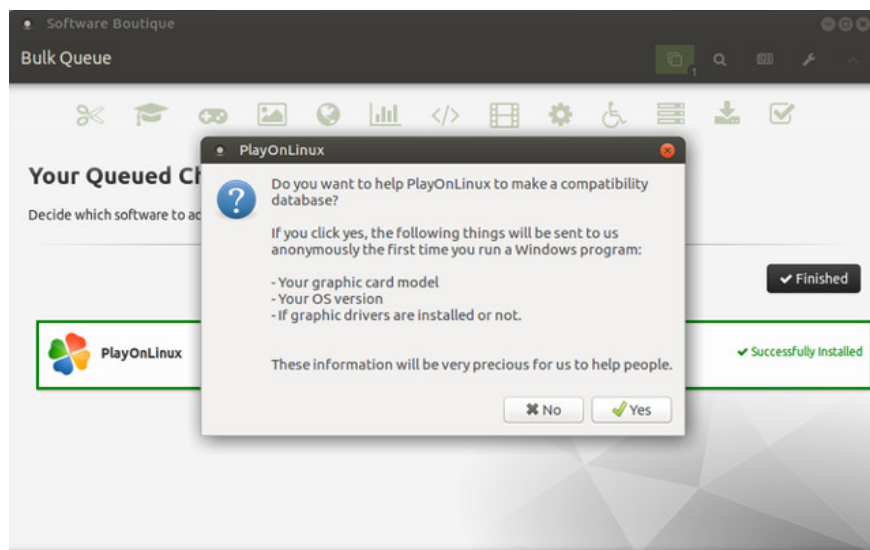
Although this is a popular choice for many users of medium and high-end desktop and laptop computers. Typically, computers with Intel Core i5 or newer processors support virtualization. Inferior processors (such as Core i3, Intel Dual Core CPUs and ARM processors) cannot be processed.

1. How to enable virtualization Intel VT-x in BIOS or UEFI

For example, if you are using Linux on an old laptop or desktop computer, you will not be able to run Windows in a virtual machine and install Microsoft Excel.

Install Microsoft Excel on Linux with Wine and PlayOnLinux

In many current versions of Linux, Wine and PlayOnLinux are pre-installed. To find out if your Linux version is installed, open the application menu and find **Games** . You can also find them listed in **Accessories** .



If not, you will need to install Wine and PlayOnLinux manually. Both can be found in the Linux operating system's default package manager, especially in Ubuntu and other Debian-based distributions. Simply search Wine and PlayOnLinux, then install.

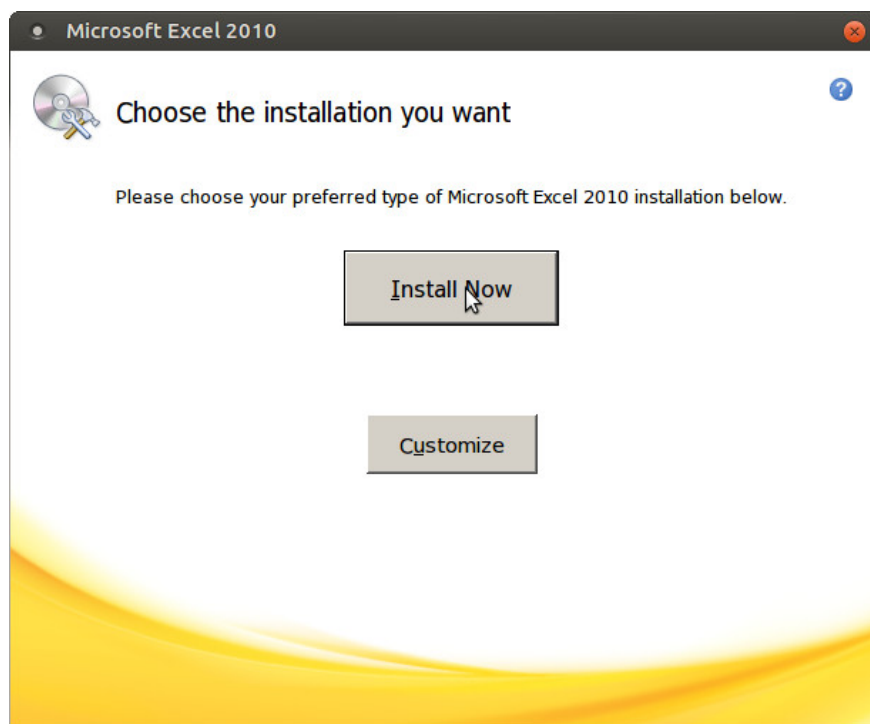
Once you have Wine and PlayOnLinux on your system, it's time to start installing. First run PlayOnLinux to find the software you want to install. Click **Install a program** to open the search engine. If you want to install Microsoft Excel, you will need to search Microsoft Office and have the installation disc.

Install Winbind

However, to do this, you need Winbind software. You can get this software by opening the terminal window and entering:

```
sudo apt-get install playonlinux winbind -y
```

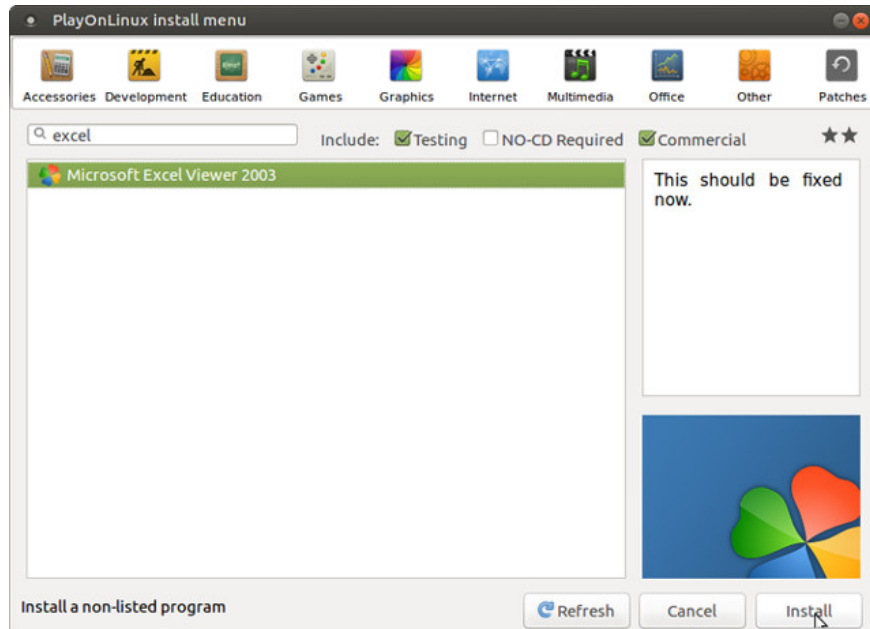
Wait while the installation is complete, then switch to PlayOnLinux. Select the version of Microsoft Office you want to install and then click the **Install** button. A few minutes later, the Microsoft Office installation wizard will appear. Here, select Microsoft Excel and click **Install**. Agree with EULA, then press **Install** again.



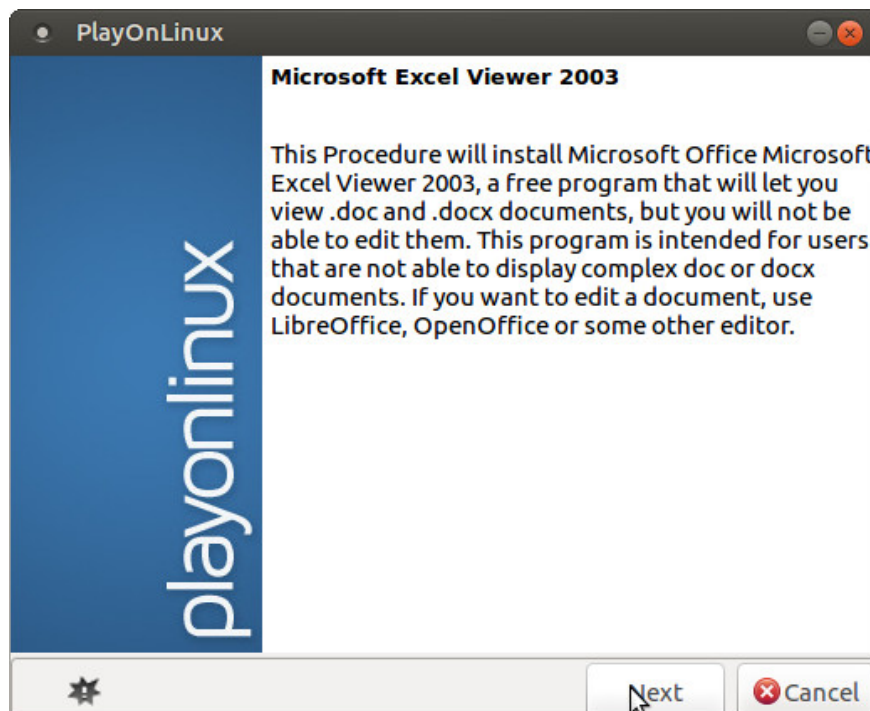
PlayOnLinux will then manage the installation of Microsoft Excel on the Linux system. Note that when completed, you will be notified of some bugs related to installing OneNote, Outlook, Word and PowerPoint. Since you do not want to install these software, you can ignore the messages by clicking **Next**. Once completed, Microsoft Excel installed will create a shortcut on the desktop. All you need to do is double-click the shortcut and Microsoft Excel will run on the Linux computer.

Install Excel Viewer on Linux

However in case you don't have a copy of Microsoft Excel, the only option is to use Microsoft Excel Viewer 2003. This is free software, which means that PlayOnLinux will download and install automatically. Click **Install** , then select **Next** until the installer starts. Read the warning then select **Download the program** and **Next** .



Wait for the installer to continue and install the font for Microsoft, you will see the main Excel Viewer installer. Read and accept the default options and follow the installation instructions to finish.



A few minutes later, the Excel Viewer will be installed. Although you cannot create a new spreadsheet, this is the ideal tool to view and print spreadsheets. If the software does not create a shortcut on the desktop, you will

see the Excel Viewer run in the PlayOnLinux application window.

Many Windows applications and games can run on Linux thanks to Wine. See the article [How to install Windows software on Linux using PlayOnLinux](#) to know how to install other Windows software and applications.

You finished reading the article "**Ways to install Microsoft Excel on Linux**" edited by the [TipsMake](#) team. We hope this article has provided you with many useful tech tips and tricks. You can search for similar articles on tips and guides. Thank you for reading and for following us regularly.