

Ways to find IP Router address on Windows 10

To be able to find the Router IP address on Win 10, we can use many different ways, such as searching by available information on the computer or using other specialized IP Address Finder software.

Finding the Router IP address on Win 10 is extremely simple and easy with many different search methods. When we find the Router IP address, we can easily edit it at our discretion. Especially in the case of the office, when there are many Modem, the router connects, it is necessary to find the IP address of the Router.

The following article summarizes how to find the IP address of Windows 10 Router. However, we can also use the following methods to find Windows 7 Router IP address or find the Windows 8 Router IP address. .

1. Here's how to check if your IP address is static or dynamic
2. Fix IP address conflict error on Windows computer

How to find the Router IP address

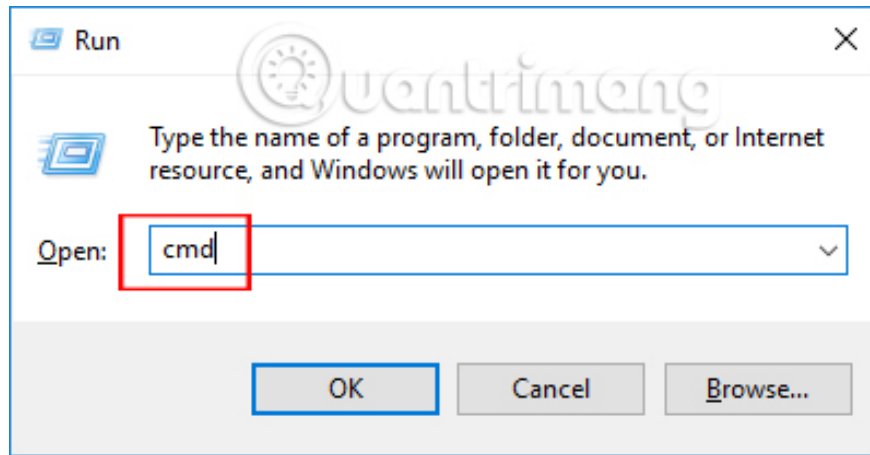
1. Find IP Router address with Command Prompt
2. Find the IP address in Adapter Settings
3. Find Windows 10 IP Router address by software
- 4.
4. Find the IP Router address on the website
5. Search on the router itself
 1. How to find the external IP address of the router
 2. How to find the local IP address of the router

1. Find IP Router address with Command Prompt

This is the most popular way to find the Router IP address with the most popular CMD command on most Windows operating systems.

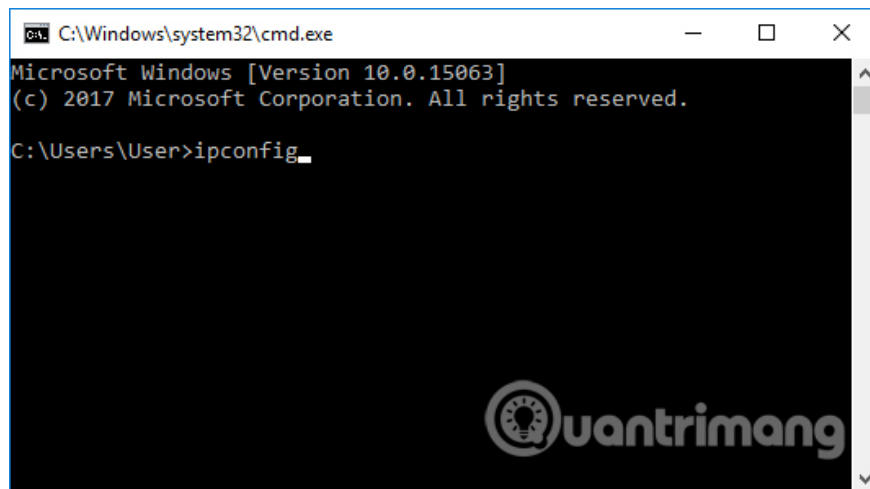
Step 1:

We open **the Run dialog box** by pressing the Windows + R key combination and then enter **the cmd keyword** , click **OK** to access the Command Prompt .



Step 2:

Next, **enter the ipconfig command** in the Command Prompt interface to check the router's IP address.



Right at the next interface, the user should look to **the Default Gateway line** and know the Windows 10 computer IP Router address.

```
C:\Windows\system32\cmd.exe
Subnet Mask . . . . . : 255.255.255.0
Default Gateway . . . . . : 192.168.70.1

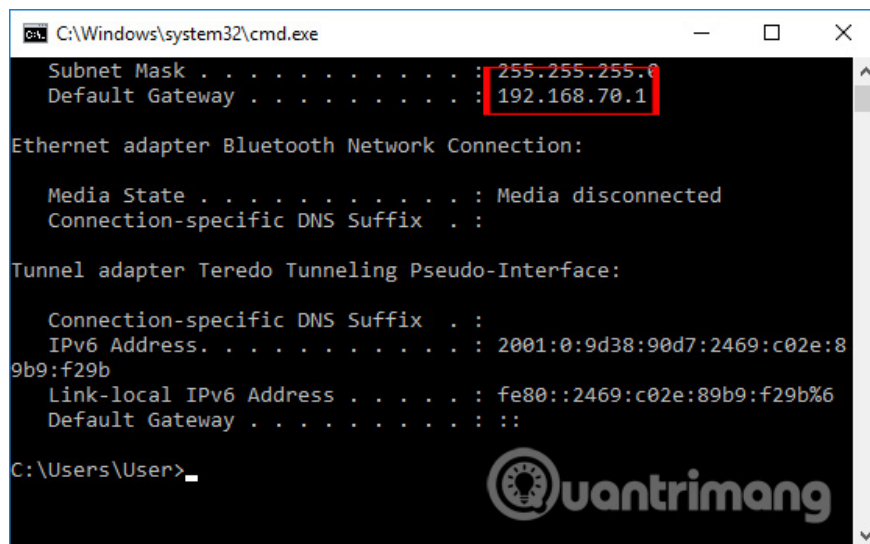
Ethernet adapter Bluetooth Network Connection:

Media State . . . . . : Media disconnected
Connection-specific DNS Suffix . :

Tunnel adapter Teredo Tunneling Pseudo-Interface:

Connection-specific DNS Suffix . :
IPv6 Address. . . . . : 2001:0:9d38:90d7:2469:c02e:8
9b9:f29b
Link-local IPv6 Address . . . . . : fe80::2469:c02e:89b9:f29b%6
Default Gateway . . . . . : ::

C:\Users\User>
```

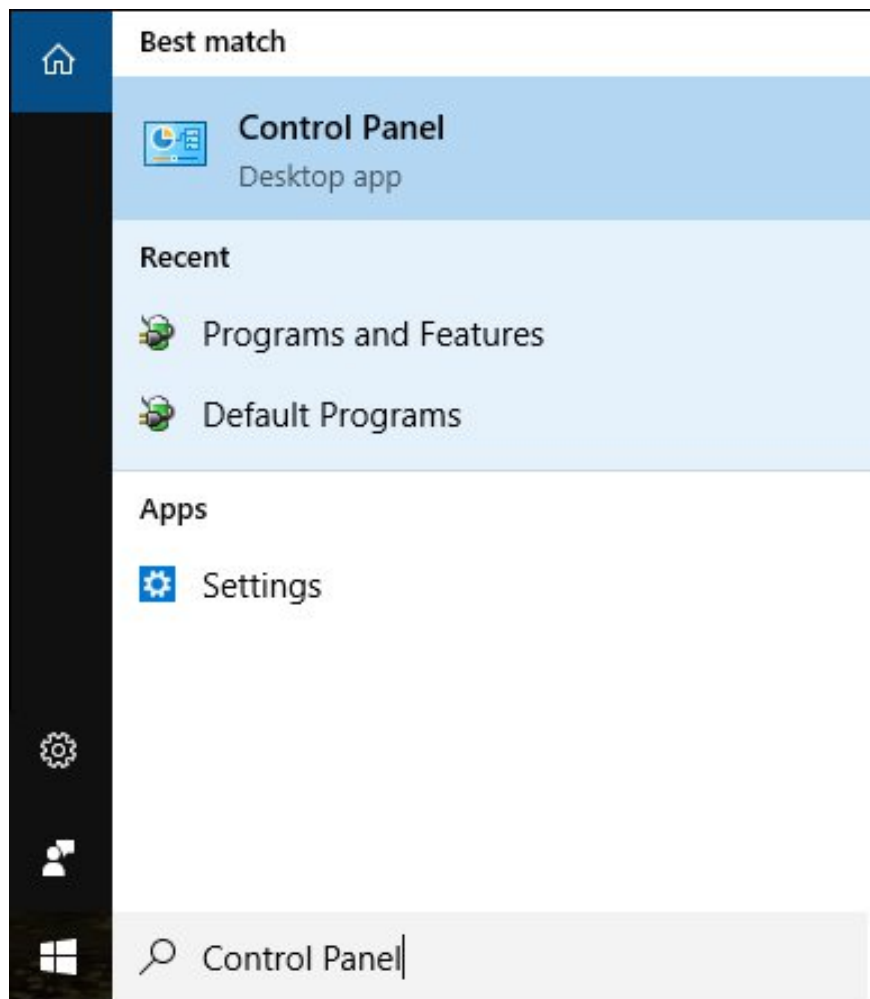


2. Find the IP address in Adapter Settings

Even the computer setup interface contains basic information about the computer, including the IP Router address Windows 10.

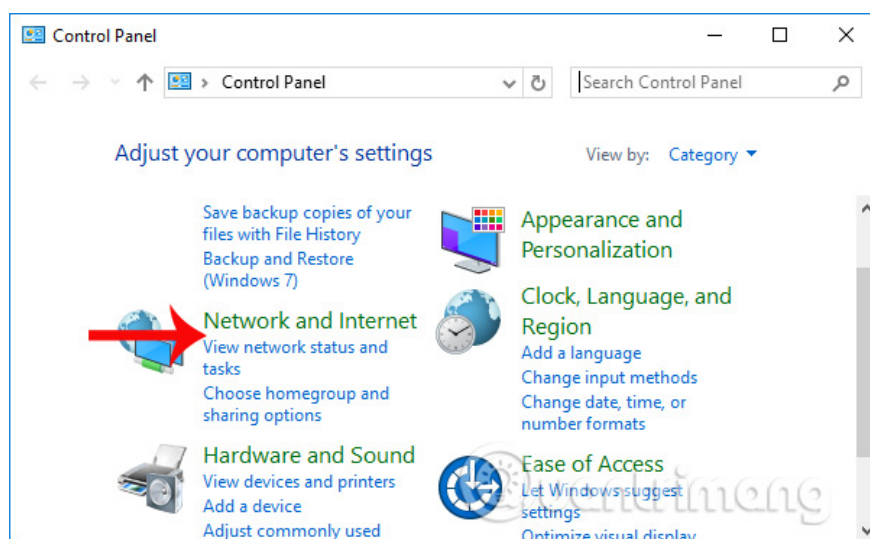
Step 1:

In the search bar on Windows, enter **the Control Panel keyword** and click on the search result.



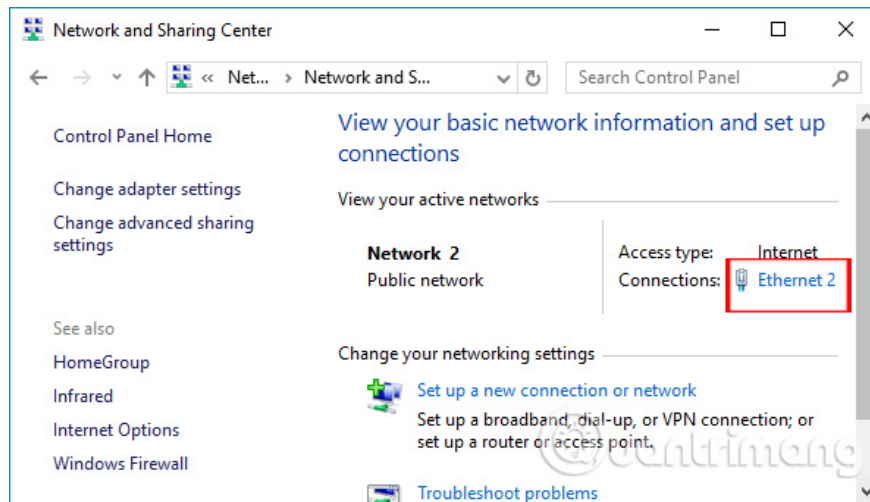
Step 2:

In the Control Panel interface, click on **View network status and tasks** in the Network and Internet section.



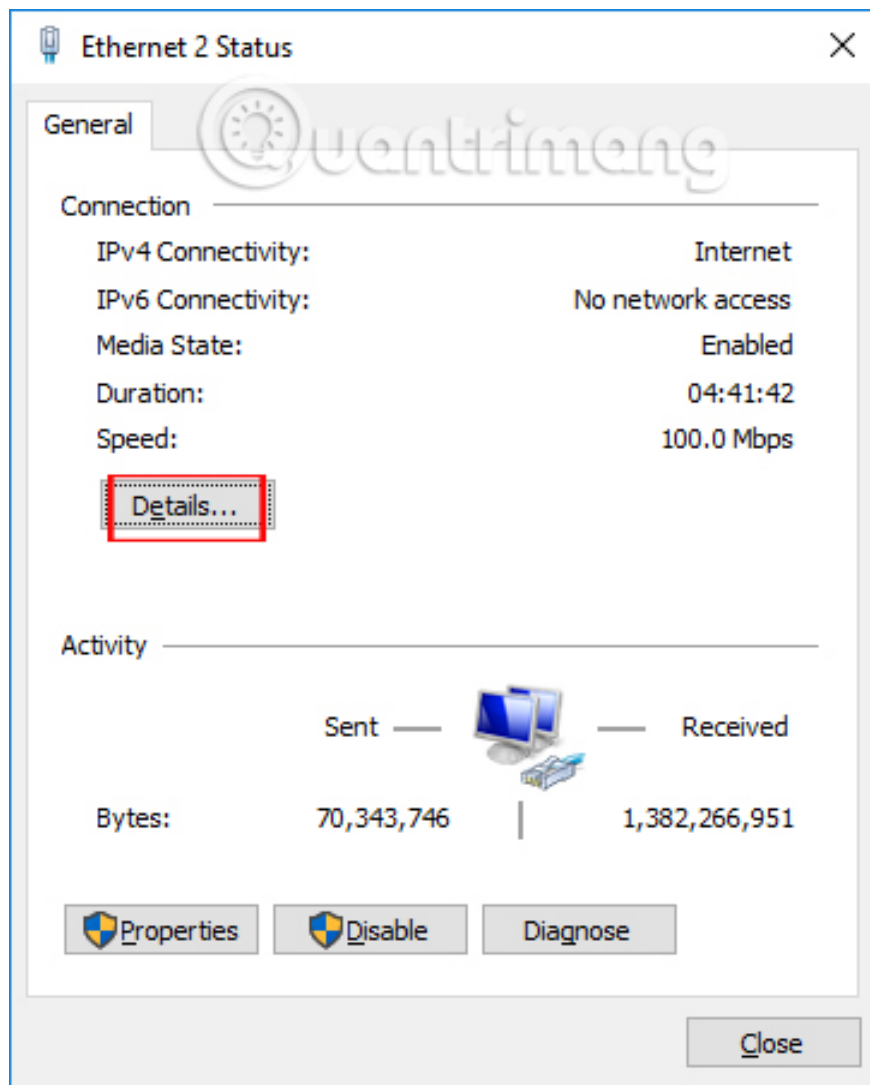
Step 3:

Click on Ethernet to access the wired network settings you are using. In case you use WiFi, click on the connected WiFi name.

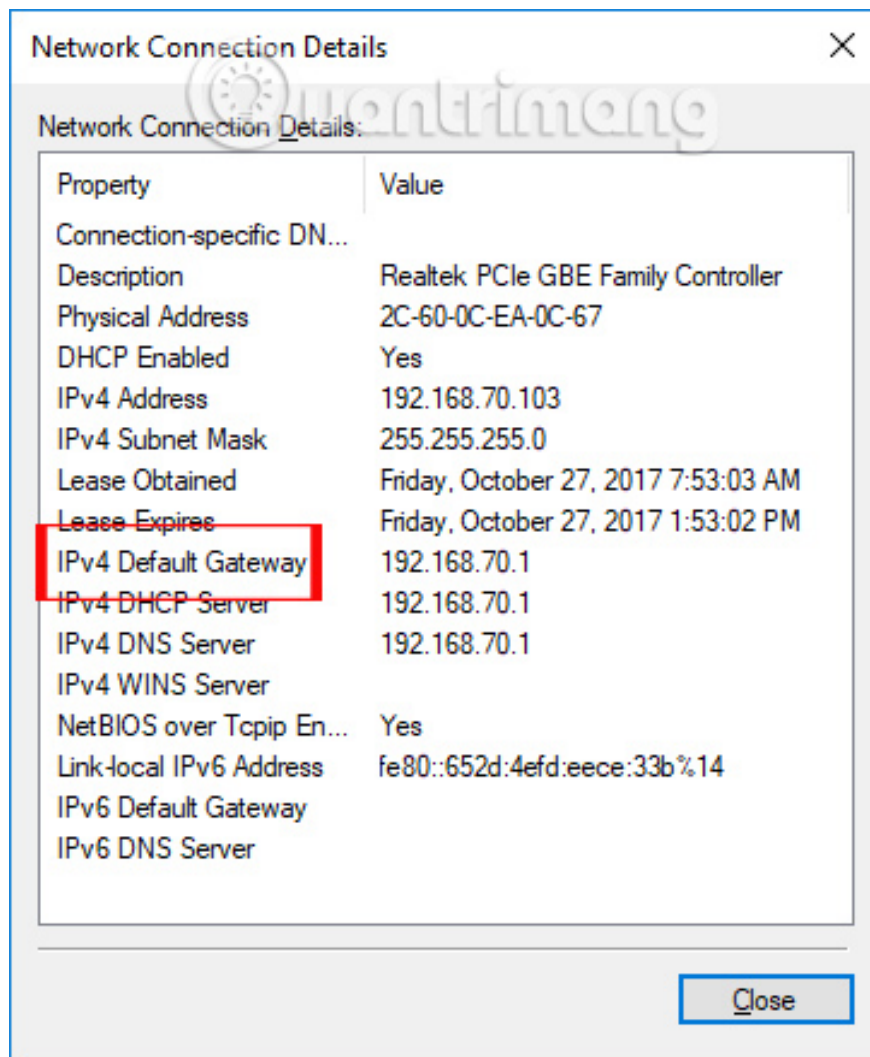


Step 4:

In the next interface click on **the Details button** to see the details of the network connection.



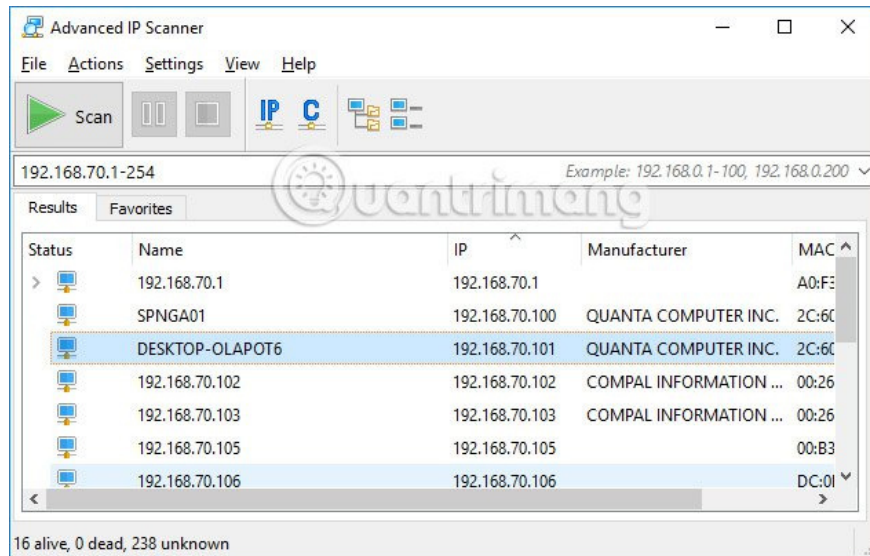
At the **IPv4 Default Gateway**, the user will see the IP address of Router and Modem on Windows 10 computer.



3. Find Windows 10 IP Router address by software

There are a number of software to help you find IP addresses such as Advanced IP Scanner. Especially, the software also lets users know which router and modem they are using.

Please refer to the details of how to install Advanced IP and use Advanced IP to find the IP address of the computer Router in the article How to find the IP address of another computer on the LAN.



4. Find the IP Router address on the website

Some websites now have Modem data collection to provide users with basic information about that Modem. From there the user will know the Router's IP. If you have not found the IP address of Windows 10 Router, you can do it this way.

Step 1:

We access the link below.

1. <http://www.routeripaddress.com/>

At this interface, please click on **the** corresponding **Modem line** in use.

Netgear Dual-Band Wireless AC USB 2.0 Adapter, WGR614L, netgear wgr614v6 model netgear wgr614v6 model	D-Link AC750 Dual Band Cloud Router, 2x 5dBi Antennas (DIR-816L) DIR-816L, DIR-825, DVA-G3670B	Linksys WGA54G, AC1750 802.11n, EA6500-BBY, BEFSR41
TP-Link TD-W8910G, TL-WR841N Wireless N300 Home Router, Archer C5 AC1200 Dual Band Wireless AC Gigabit Router	Cisco WS-C3750E-48PD-SF-R 48 x 10/100/1000Base-T, Cisco-Valet Plus Wireless Router Wireless Router, 886VA	ASUS DSL-N11, WL-330N3G, R802.11ac, IEEE 802.11a/b/g/n, 802.3/3u/3ab Dual-Band Wireless Gigabit Router
Belkin F5D8233-4, Belkin F9K1102, BELKIN E9K7500 Wireless N750 Dual Band N+ Router	Zyxel NWA-3166, NWA570N, ZyWALL 2 Plus	TrendNET TEW-637AP 802.11b/g/n, Easy-N-Upgrader up to 300Mbps, TW100-BRV324
LevelOne LevelOne WBR-6022 Wireless N 300Mbps HomeGuard Router, EBR-1411TY, WBR-6001	Edimax EW-7206APG, AR-7024Wg, BR-6314K	BUFFALO WHR-HP-G54DD, 24-Port Gigabit Ethernet Switch, Business-Class Unmanaged

Step 2:

Appears a list of Router devices for users to choose in accordance with the network device in use.

	TP-Link Archer C2600 Wireless-AC Dual-Band Gigabit Router ARCHERC2600
	TP-Link Archer C3200 Wireless-AC Tri-Band Gigabit Router
	TP-Link Archer C3200 Wireless-AC Tri-Band Gigabit Router ARCHERC3200
	TP-Link Archer C5 AC1200 Dual Band Wireless AC Gigabit Router
	TP-Link Archer C5 AC1200 Dual-Band Wireless Router with 4-Port Ethernet S

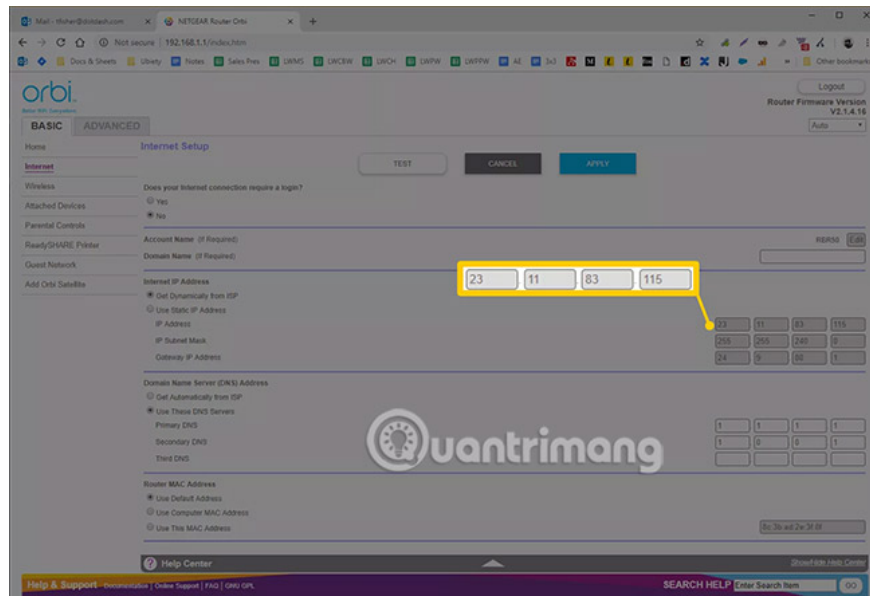
Finally when you click on the device correctly you will know what the configuration is exactly.

		
Router Details and Default Settings		
Manufacturer		Release Date
TP-Link		03/2015
Default IP Address	Default Password	Default Username
192.168.1.1	blank	admin
Router Features		
Broadband	Business Class	Ethernet
yes	–	yes
		Firewall
		yes

5. Search on the router itself

Home broadband routers have two IP addresses - one is its Private IP address on the local network and the other is a Public IP address that is used to communicate with external networks on the Internet.

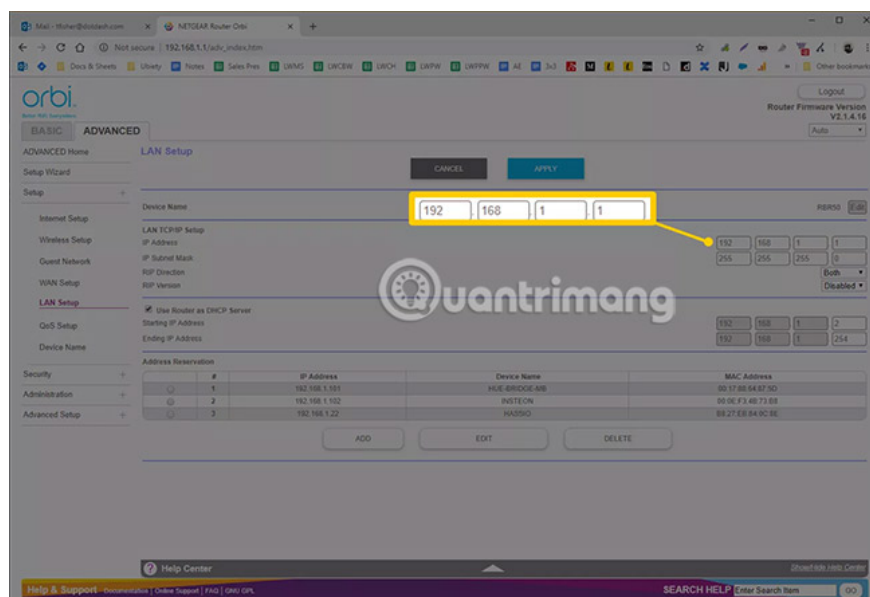
How to find the external IP address of the router



The external address managed by the router is set when it connects to an Internet service provider (ISP) using a broadband modem. This address can be found from web-based IP lookup services such as **IPChicken.com** or from within the router.

Routers from other manufacturers are similar, but on a Linksys router, you can view the Public IP address on the **Status** page in the **Internet** section. NETGEAR routers can call this address **Internet Port IP Address** and are listed in the **Maintenance > Router Status** screen.

How to find the local IP address of the router



The home router has a local address set to the default Private IP address. Different models from the same manufacturer usually have the same address, and you can find it in the manufacturer's documentation.

You can also check this IP address in the router's settings. For example, most Linksys routers list private addresses, called Local IP Addresses in the **Setup> Basic Setup** screen . A NETGEAR router can call it a **Gateway IP Address** on the **Maintenance> Router Status** page .

Below are the default local IP addresses for some of the most popular routers:

1. Linksys routers use 192.168.1.1 as their default internal address.
2. D-Link and NETGEAR routers are usually set to 192.168.0.1.
3. Cisco routers are usually 192.168.10.2, 192.168.1.254 or 192.168.1.1.
4. Some Belkin and SMC routers use 192.168.2.1.
5. US Robotics routers use 192.168.123.254.

The administrator has the option to change this IP address during router setup or at any time in the router's administrative control panel.

Unlike other IP addresses on the home network (usually changed periodically), the router's Private IP address remains static (fixed) unless someone changes it manually.

Tip: There are several ways to find the router's local IP address in Windows, Mac and Linux operating systems if you don't want to see it on the router itself (please return to the top). You can do that by finding the default gateway address.

The public IP address of the home network may change periodically because the ISP assigns a dynamic address to most customers. These changes are from time to time because they are reallocated from the address pool of the service provider.

The above figures apply to the most commonly used traditional IPv4 addresses on the network. New IPv6 uses a different numbering system for its IP addresses (although similar concepts apply).

On the corporate network, Simple Network Management Protocol (SNMP) based network discovery services can automatically determine the IP addresses of other network devices, including routers.



So we have 5 ways to find IP Router address on Windows 10 easily. Finding IP Router addresses is extremely simple and fast, and you can find it right on your device's settings or rely on external programs.

Hope this article is useful to you!

See more:

1. 6 simple ways to find the fastest computer IP address
2. Here's how to check if your IP address is static or dynamic
3. Does your router use IP address 10.0.0.1?

You finished reading the article "**Ways to find IP Router address on Windows 10**" edited by the [TipsMake](#) team. We hope this article has provided you with many useful tech tips and tricks. You can search for similar articles on tips and guides. Thank you for reading and for following us regularly.