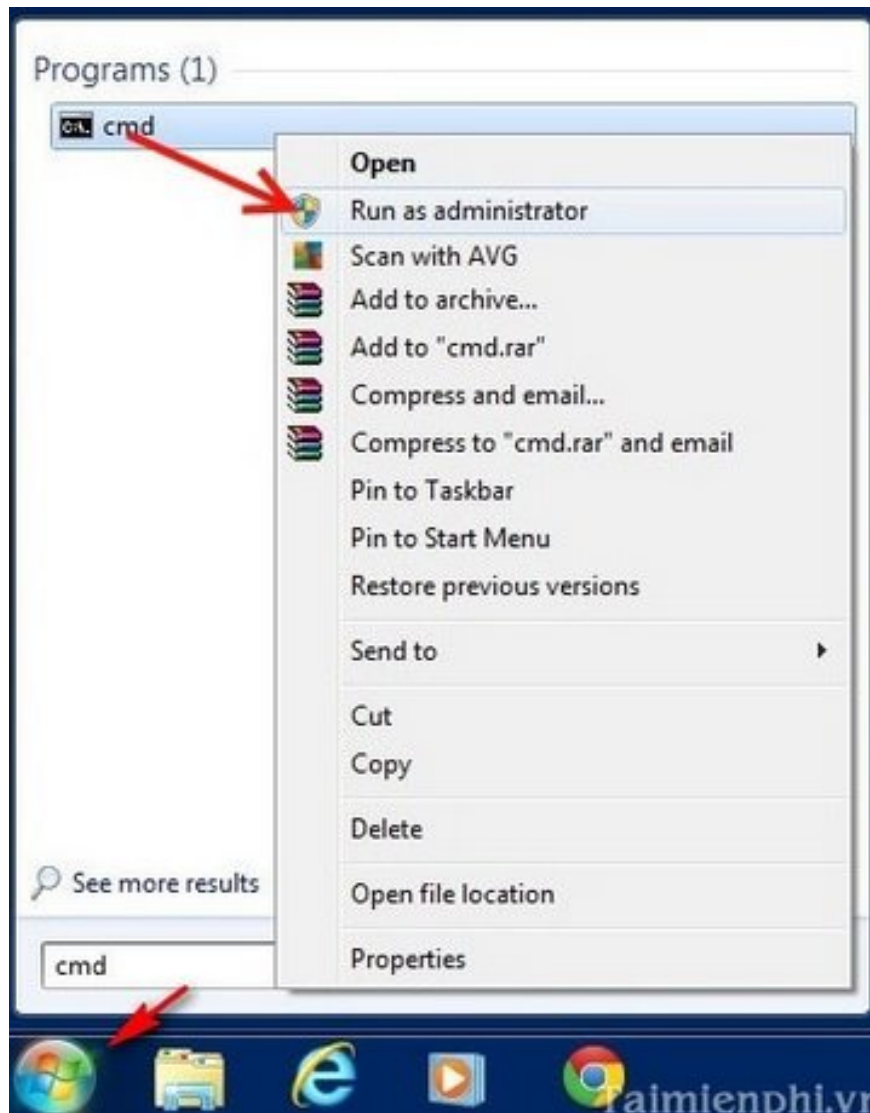


View and read MAC addresses of Windows 7, 8, 10 and Mac OS X computers

The MAC address is a unique identifier, or device identifier, assigned by manufacturers to each device. If for some reason you need to see the MAC address of a Windows 7, 8, 10 and Mac OS X computer but don't know how to do it, please follow this article.

Step 1: From the **Start button**, type **cmd** in the search box and the **Command Prompt** will appear, right-click and select **Run as administrator**.



Step 2: Enter the command line: **ipconfig /all** then press the **Enter** key.

The command prompt window will return you information about the network adapter on the computer. Find the computer's MAC address and look at the **Physical Address** section . This line will display the **Active Directory MAC address**

```
c:\Windows\system32\cmd.exe
c:\Windows\system>ipconfig /all

Windows IP Configuration

Host Name . . . . . :
Primary Dns Suffix . . . . . :
Node Type . . . . . : Hybrid
IP Routing Enabled. . . . . : No
WINS Proxy Enabled. . . . . : No

Ethernet adapter Local Area Connection 2:

Media State . . . . . : Media disconnected
Connection-specific DNS Suffix . . :
Description . . . . . : TeanViewer UPN Adapter
Physical Address. . . . . : 00-FF-34-E1-4C-D9
DHCP Enabled. . . . . : Yes
Autoconfiguration Enabled . . . . : Yes

Ethernet adapter Local Area Connection:

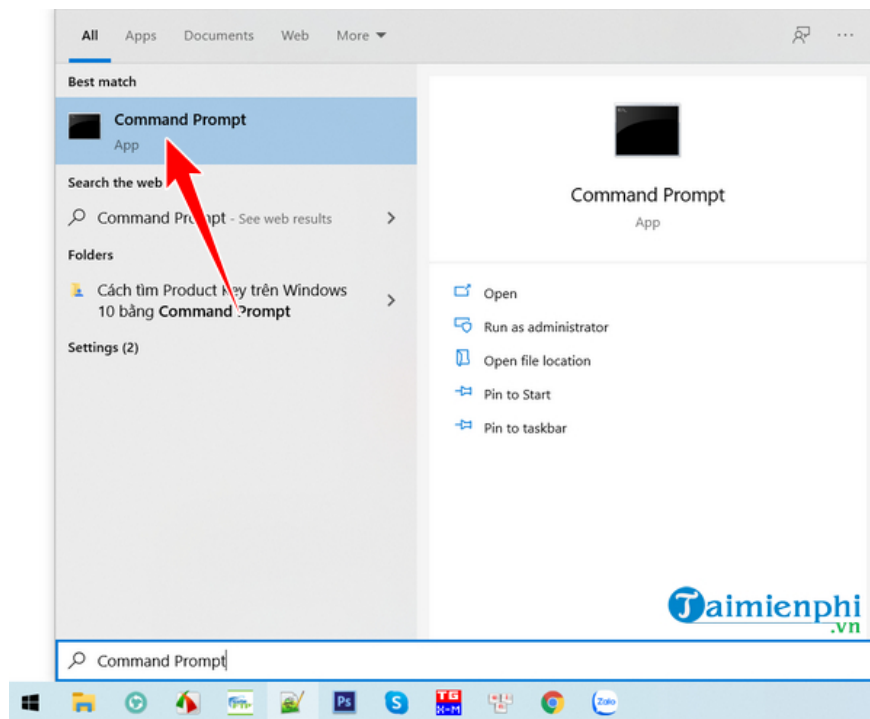
Connection-specific DNS Suffix . . :
Description . . . . . : Realtek PCIe GBE Family Controller
Physical Address. . . . . : 1C-6F-65-37-A3-05
DHCP Enabled. . . . . : Yes
Autoconfiguration Enabled . . . . : Yes
Link-local IPv6 Address . . . . . : fe80::24c4:0790:4022:4010:10(Prefe
IPv4 Address. . . . . : 192.168.1.127(Prefe
Subnet Mask . . . . . : 255.255.255.0
Lease Obtained. . . . . : Sunday, September 25, 2011 9:50:30 PM
Lease Expires . . . . . : Monday, September 26, 2011 9:50:30 PM
Default Gateway . . . . . : 192.168.1.1
DHCP Server . . . . . : 192.168.1.1
DHCPv6 IAID . . . . . : 236744549
DHCPv6 Client DUID. . . . . : 00-01-00-01-15-F0-77-61-1C-6F-65-37-A3-05

DNS Servers . . . . . : 192.168.1.1
NetBIOS over Tcpip. . . . . : Enabled

Taimienphi.vn
```

On Win 10 and 8 you can also see the same MAC address. In this article TipsMake guides on Windows 10 and on Windows 8 you can do the same.

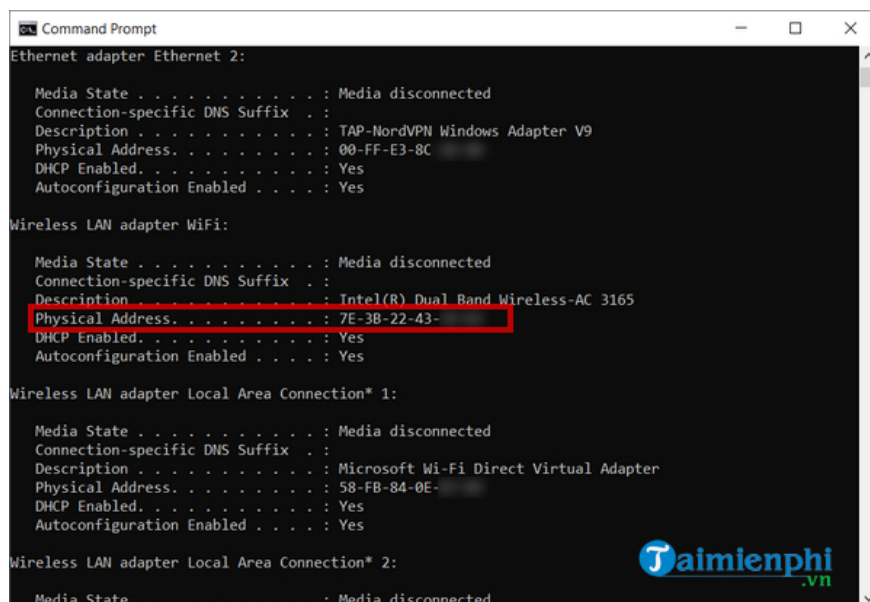
Step 1 : Use the **keyboard shortcut** combination : Windows +?



Step 2: Similar to Windows 7, enter the command line: **ipconfig /all**

Or use the command Then press the **Enter** key.

The command prompt window will return you information about the network adapter on the computer. Find and view the computer's MAC address, look at the **Physical Address** section . This line will display the **Active Directory MAC address** .



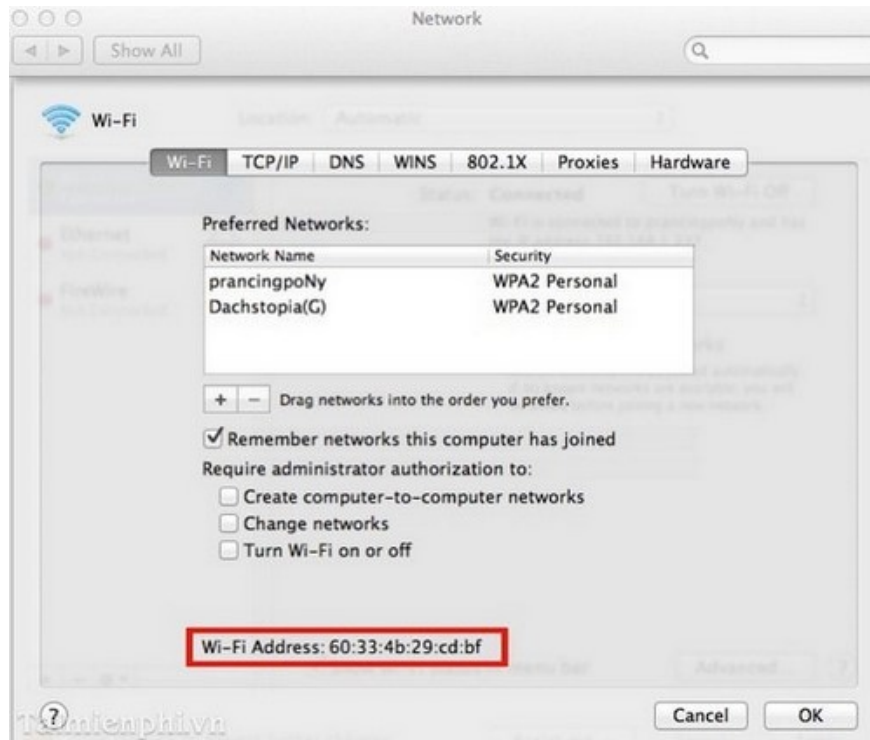
Step 1: From the **Apple** icon Menu in the upper left corner of the screen, select **System Preferences**.



Step 2: Click on **Network**



Step 3: In the Network window, select the network **adapter** whose MAC address you want to see and click the **Advanced** button. Your MAC address will appear at the bottom of the window.



Above is a method to determine the MAC address on a computer. This address is very meaningful in providing network services. Additionally, you can use software such as: Technitium MAC Address Changer to also know the MAC address.

If you use the Linux operating system, you can refer to How to check MAC address on Linux by following the instructions in the article to see.

You finished reading the article "**View and read MAC addresses of Windows 7, 8, 10 and Mac OS X computers**" edited by the [TipsMake](#) team. We hope this article has provided you with many useful tech tips and tricks. You can search for similar articles on tips and guides. Thank you for reading and for following us regularly.