

Useful shortcuts on Ubuntu 2017 you may not know yet

Ubuntu also has useful shortcuts like on Windows. Using the shortcut on Ubuntu will help you work faster. These are the most commonly used Ubuntu shortcuts that you should know when installing this operating system.

From the position of a Linux distro most famous for its own unique computing environment, Ubuntu is constantly evolving. From Ubuntu 18.04 onwards, the operating system will remove the Unity interface and return to GNOME.

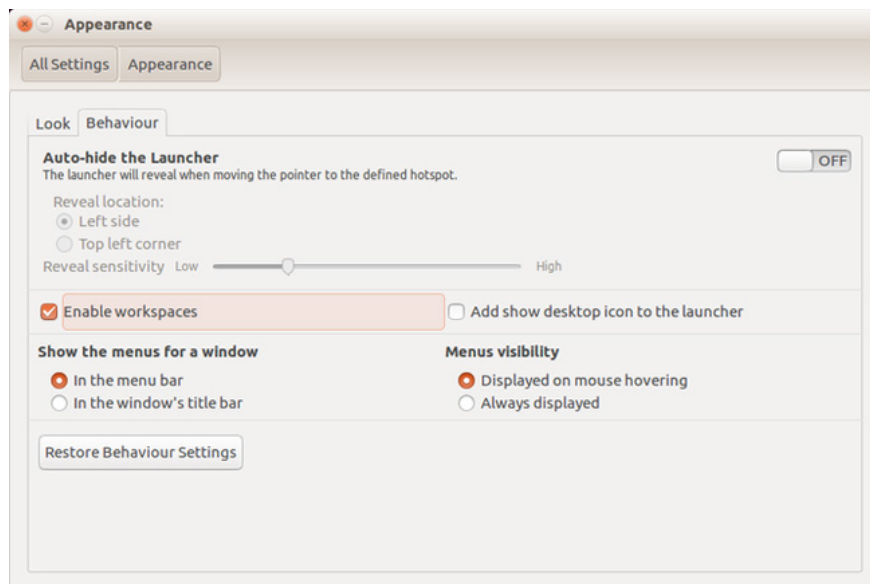
So, what about shortcut keys on Ubuntu? Will there be new Ubuntu shortcuts when changing the interface?

You may not upgrade to the latest version of Ubuntu. Thus, you can still use the computer environment with the Unity interface. This does not cause any problems, because Unity is expected to be supported for many years to come. However, you need to know the shortcuts that we have grouped by type below.

1. Summary of expensive shortcuts in Microsoft Excel
2. Create and customize application shortcuts on win 10
3. Summary of the list of common shortcuts on Mac OS X

Transfer Workspace and windows

If you have enabled workspace (**Settings**> **Appearance**> **Behavior**), you will need to navigate through them. Ubuntu's workspace - basically additional desktop areas - is arranged in a 2x2 network.



Therefore, to access these workspaces, you need to use the left and right arrows along with the up and down arrows. They are used in conjunction with **CTRL + ALT** . So, to move to the second workspace, you need to use **CTRL + ALT + arrow to the right** . To switch the view to the fourth workspace, you need to press the **CTRL + ALT** key combination + **the down arrow** .

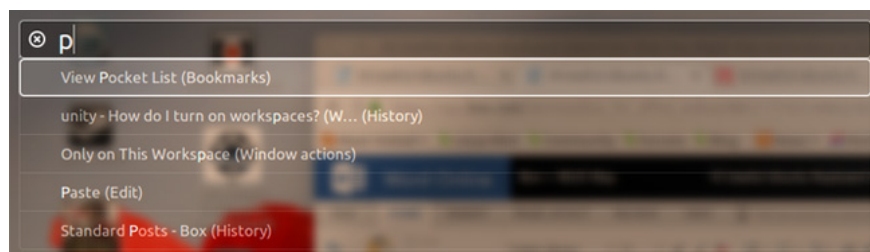
At this point, you can easily migrate the current application window between workspaces. Simply make sure the window is active (for example, you have clicked the mouse pointer on that window), then added **SHIFT** to the shortcut key combination.

Suppose I want to switch the browser to the second workspace: I will hold **SHIFT + CTRL + ALT + right arrow** .

Command dialog box

You have several options for exporting commands on Ubuntu.

To open the pop-up command dialog, press **ALT + F2** , or just press **ALT** . Simply type in the boxes - it's like an instant search feature - where the stuff you enter is immediately connected to an existing native command or application.



Meanwhile, if you need to open a Terminal window, **CTRL + ALT + T** will be the shortcut to use.

Application menu

Various shortcuts are available to access and scroll through the application menu without using a mouse.

The first is the **SUPER** key. This is essentially a Windows key - renamed for use in Linux. Here, it will open **Overview**, which is equivalent to Ubuntu Unity of the Windows Start menu. Once opened, you can enter the command (as above) or use the arrow keys to navigate through the initial display.

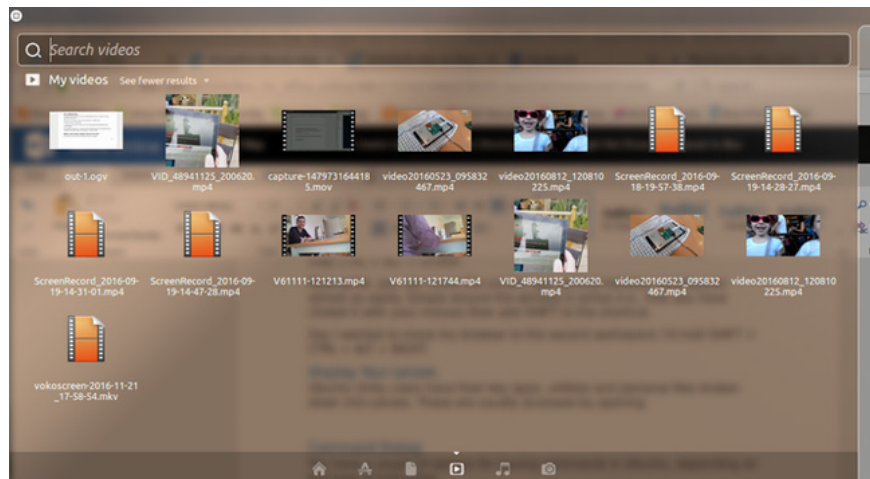
Another option is to use **SUPER + ALT**, then press **F1** to display numbered shortcuts for the first 10 applications listed on Launcher (the application menu on the left). Release **F1** and click on the number of the application you want to start.

Meanwhile, **ALT + F1** can be used in combination with arrow keys to move up and down applications on Launcher. Click **Enter** to open the selected tool.

Finally, you can turn off everything by pressing **CTRL + SUPER + D** to display the main screen. Press the key combination again to restore application windows.

Show the Lense

Ubuntu Unity users have applications, utilities and important personal files broken down into Lense. They are usually accessed by pressing the corresponding button at the end of the Overview section.



However, there is also a set of shortcuts to open applications and files for Unity. **SUPER + A** shortcut will display the applications installed and recently used, **SUPER + F** will display your files and folders.

You can also display multimedia files with **SUPER + V** shortcut to open videos and **SUPER + M** to open the music player.

Application rotation and rotation

Switching between open applications quickly can save a lot of time. You can view open applications in two ways.

The first way is to use the **ALT + TAB** key combination. This will display a box with icons for open applications on the workspace. Each subsequent press of **TAB** will rotate through open applications. Once you have selected the application you want to use, free both. At the same time, to cycle back through the application, press **ALT + TAB** , then add **SHIFT** to the key combination.

If you are using multiple computers, this second might be useful - that is **CTRL + ALT + TAB**. With this shortcut, you can cycle through open applications, even if they are currently mounted on another workspace.

Replace the mouse

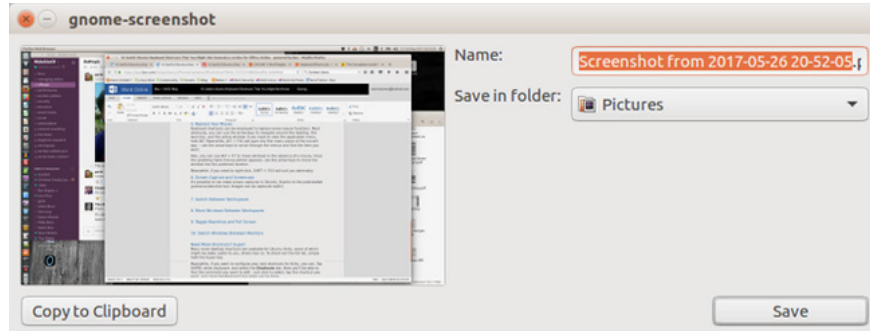
Shortcuts can be used to replace some mouse functions. Most obviously, you can use arrow shortcuts to move around the screen, launcher and active windows. If you need to see the application menu, hold down the **ALT** key. Besides, the shortcut **ALT + F10** will open the first menu panel of the current application - use the arrow keys to scan through the menus and find the item you want.

Alternatively, you can use **ALT + F7** to move the window when there is no mouse. When the mouse pointer appears, use the arrow keys to move the window to the preferred position.

If you need to right-click, just press **SHIFT + F10** . If you need a mouse, you can buy a new one.

Screen capture shortcuts

The gnome-screenshot screen capture tool is preinstalled in Ubuntu. You can take a screen shot by pressing **PRT SC** or if you want to capture an active window then use **ALT + PRT SC** .



For each option, a dialog box will appear asking where you want to save the file. Just click **Save with the correct destination selected to finish**. You can also use **Copy to clipboard** to use screenshots with an open application.

Lock profile and see Trashcan

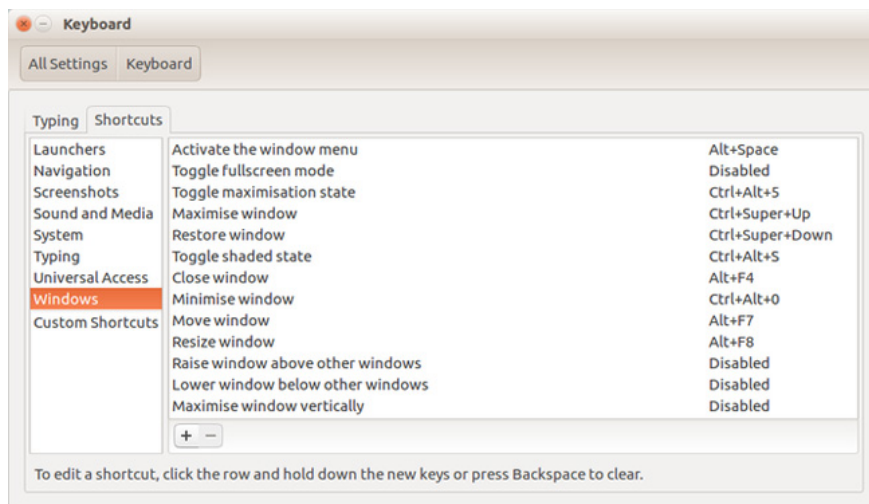
Did you accidentally delete a file you want to recover? It will be in the Trashcan, which can be easily opened using **SUPER + T**. Select an item and click on **Restore** to bring it back to its original position.

CTRL + H keyboard shortcut is also one of the important key combinations. This is a shortcut that when clicked, it displays hidden files in your file manager. This shortcut is very useful in finding files that are inaccessible in many cases.

Finally, you can make Ubuntu computers or laptops safe from users who have not been authorized by locking the screen. This function will quickly be done by pressing **SUPER + L**.

Do you need more shortcuts?

Many screen shortcuts are available on Ubuntu Unity, one of which may be useful to you. To check the full list, just hold down the **Super** key.



You can also create individual shortcuts for Unity. Click **SUPER** , enter the shortcut and select **Shortcuts** tab. Here, you can find the commands you want to edit, just press to select, click the shortcut you want and close the Keyboard box when done.

Above are the 10 most useful shortcuts for Ubuntu, if you have any other shortcuts for this operating system, please let us know by commenting below!

You finished reading the article "**Useful shortcuts on Ubuntu 2017 you may not know yet**" edited by the [TipsMake](#) team. We hope this article has provided you with many useful tech tips and tricks. You can search for similar articles on tips and guides. Thank you for reading and for following us regularly.