

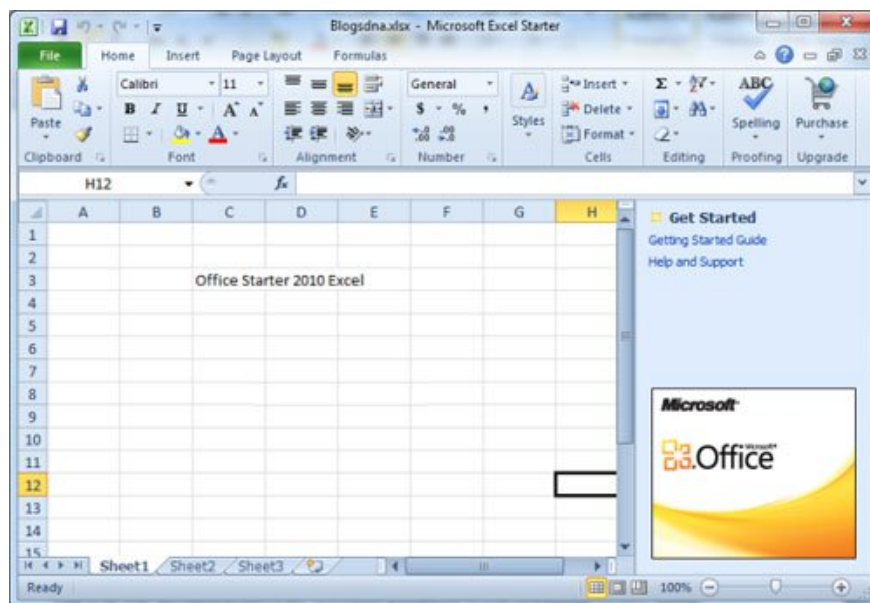
# Use MS Office 2010 Starter Beta from USB drive

Microsoft Office To-Go Device Manager is a utility integrated by Microsoft in the Microsoft Office 2010 Starter Beta installer, allowing users to put the Word 2010 Starter Beta and Excel 2010 Starter Beta on a USB drive for use.

**Microsoft Office To-Go Device Manager is a utility integrated by Microsoft in the Microsoft Office 2010 Starter Beta installer, allowing users to put the Word 2010 Starter Beta and Excel 2010 Starter Beta on a USB drive for use.**

- >>> [Download Microsoft Office 2010 Starter Beta here](#)
- >>> [10 highlights of Office 2010](#)
- >>> [Microsoft announces free version of Office 2010](#)
- >>> [What is the free version of Office 2010?](#)

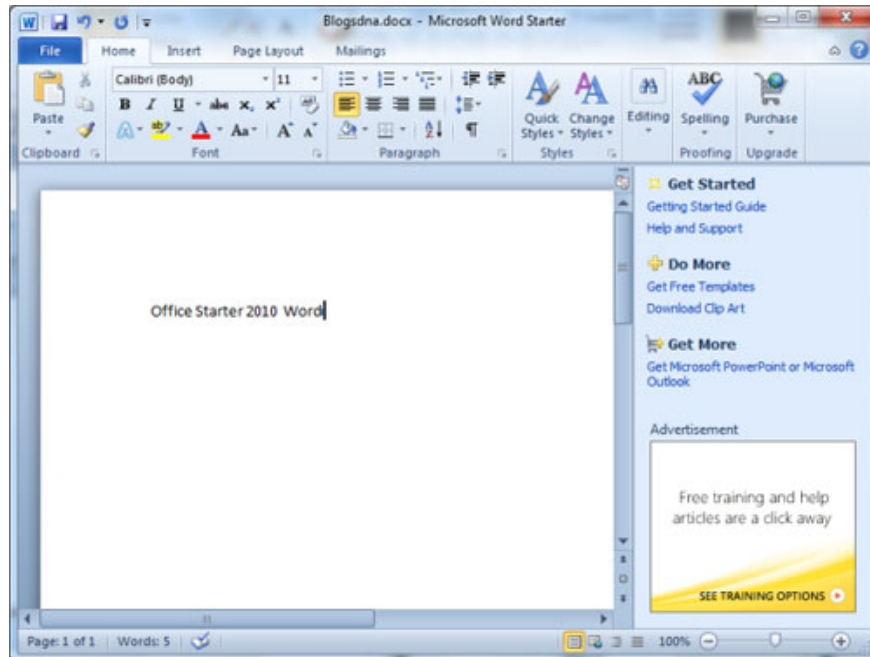
Only the Word 2010 Starter Beta and Excel 2010 Starter Beta with basic functions for text editing and spreadsheets, the Microsoft Office 2010 Starter Beta is quite compact, suitable for general users. You are also not concerned about copyright issues because Microsoft Office 2010 Starter Beta is provided by Microsoft for free.



Excel 2010 Starter Beta interface

While Word 2010 and Excel 2010 have 9 commands, the Word 2010 Starter Beta and Excel 2010 Starter Beta interface consists of only 5 commands: **File, Home, Insert, Page Layout, Mailings** .

According to the test, you can install the Microsoft Office 2010 Starter Beta on a computer that has installed Microsoft Office 2003 to use the Word 2010 Starter Beta in parallel with Word 2003, and the Excel 2010 Starter Beta with Excel 2003.

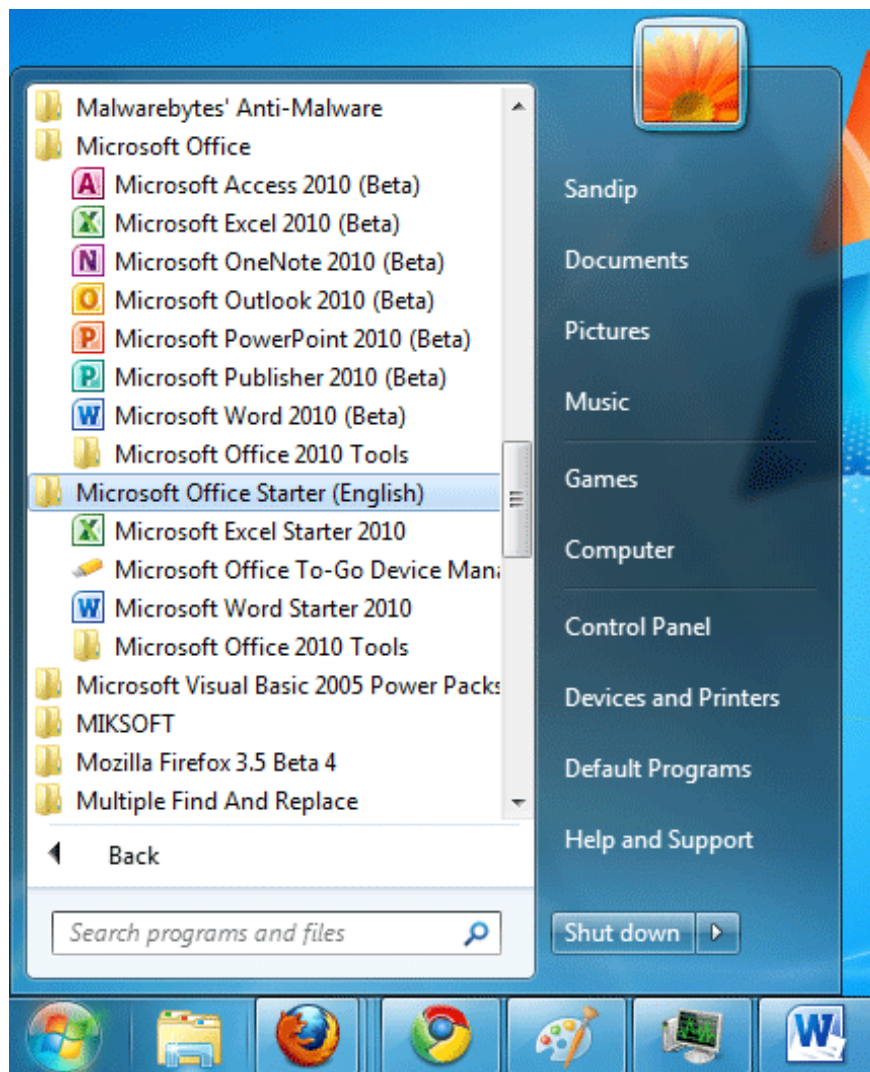


Word 2010 Starter Beta interface

First, download the Microsoft Office 2010 Starter Beta online installation file [here](#) (capacity is only 1.54MB).

After downloading, run the **SetupOffice2010Starter.exe** file to begin the online installation of Microsoft Office 2010 Starter Beta in four steps (*requires a computer to connect to the Internet*) .

After installation, you attach the USB drive that will contain Microsoft Office 2010 Starter Beta to your computer, then go to **Start menu > All Programs > Microsoft Office Starter (English)** to see all Microsoft Office 2010 Starter Beta applications, including Microsoft Office To-Go Device Manager 2010 (Beta).

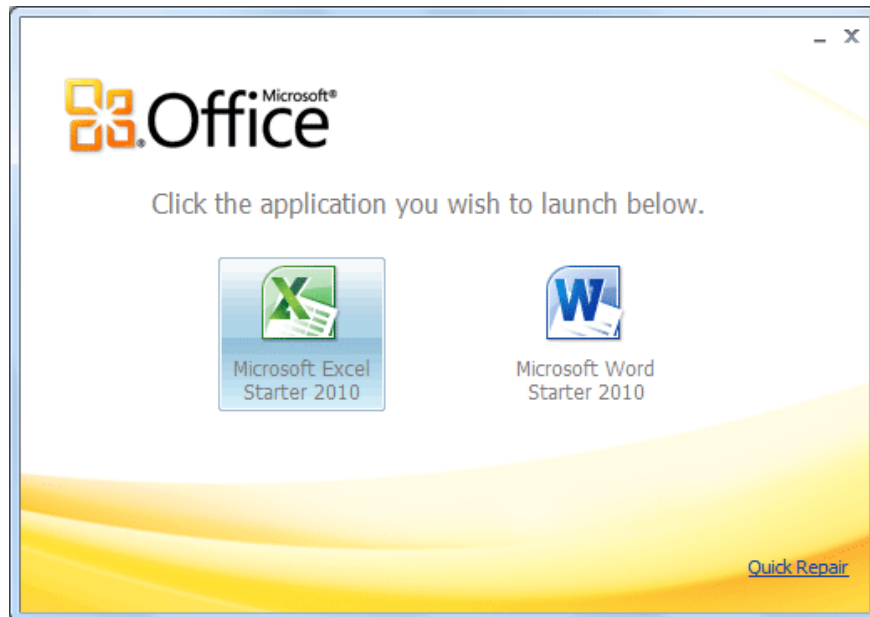


In the dialog box that appears after clicking this app, press the **Start** button. The process to download the necessary components to help you manage Microsoft Office 2010 Starter Beta USB drive will take place later (it may take more than 10 minutes).

Complete and go to **Manage Devices** dialog box, click the **USB** drive to install **Microsoft Office 2010 Starter Beta** (about 338MB) and then click **Install** .

When the dialog box with the **Installation Completed** message appears, it is complete. If you want to continue installing Microsoft Office 2010 Starter Beta on another USB drive, press the **Create Another Device** button.

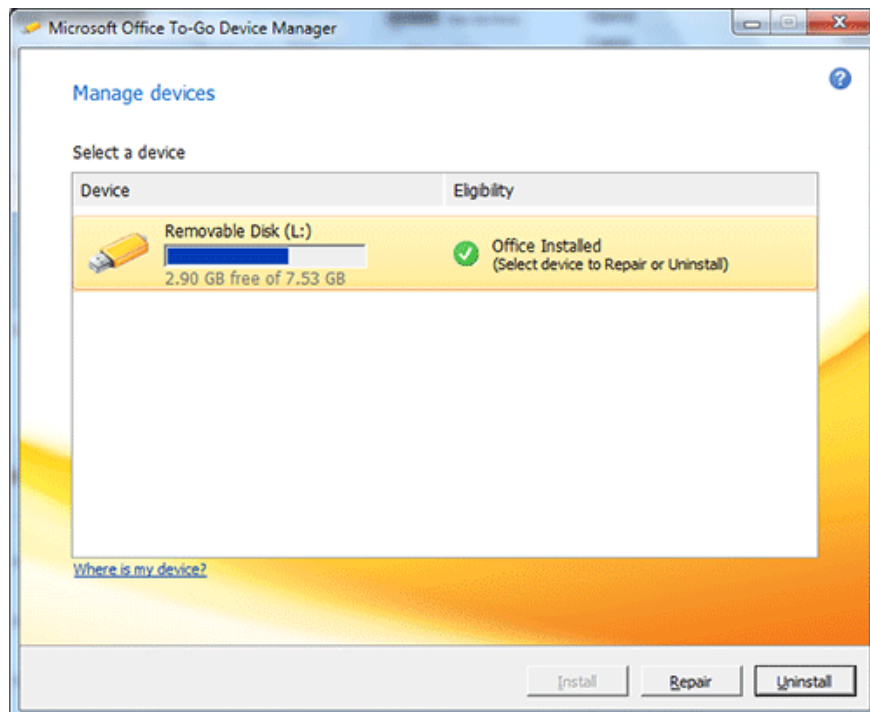
To exploit Microsoft Office 2010 Starter Beta from a USB drive, open the USB drive and then double-click the **Office.exe** file (the remaining data will be in the **VirtualApplications** hidden folder). In the **Click the application** dialog **you wish to launch below** appear, click the Microsoft Word 2010 Starter icon or Microsoft Excel 2010 Starter to open the corresponding application interface.



Select the application you want to use from the USB drive

The **Quick Repair** link below should be used to quickly fix the Microsoft Office 2010 Starter Beta installer on a USB drive. In the dialog box that opens, click the **Yes** button to confirm.

**Note** : If you need to remove Microsoft Office 2010 Starter Beta from the USB drive, you also first activate Microsoft Office To-Go Device Manager 2010 (Beta) from **Start menu > All Programs > Microsoft Office Starter (English)** , click Select Microsoft Office 2010 Starter Beta **USB** drive from the **Manage Devices** dialog box that opens, and then click the **Uninstall** button below.



**Note** : Microsoft Office 2010 Starter Beta can only be installed on Windows 7 or Windows Vista SP1 operating systems

You finished reading the article "**Use MS Office 2010 Starter Beta from USB drive**" edited by the [TipsMake](#) team. We hope this article has provided you with many useful tech tips and tricks. You can search for similar articles on tips and guides. Thank you for reading and for following us regularly.

---