

Use eBox as Windows Primary Domain Controller

The Platform platform is one of the open source server systems that allows administrators to capture, control and manage network services.

TipsMake.com - The eBox Platform is one of the open source server systems for small and medium-sized companies and businesses, allowing administrators to capture, control and manage network services such as firewalls, DHCP, DNS, VPN, proxy, IDS, mail, file sharing and printers, VoIP, IM. Besides, these features are tightly linked, automatically backed up, avoid risks and save time, cost of the administrator.

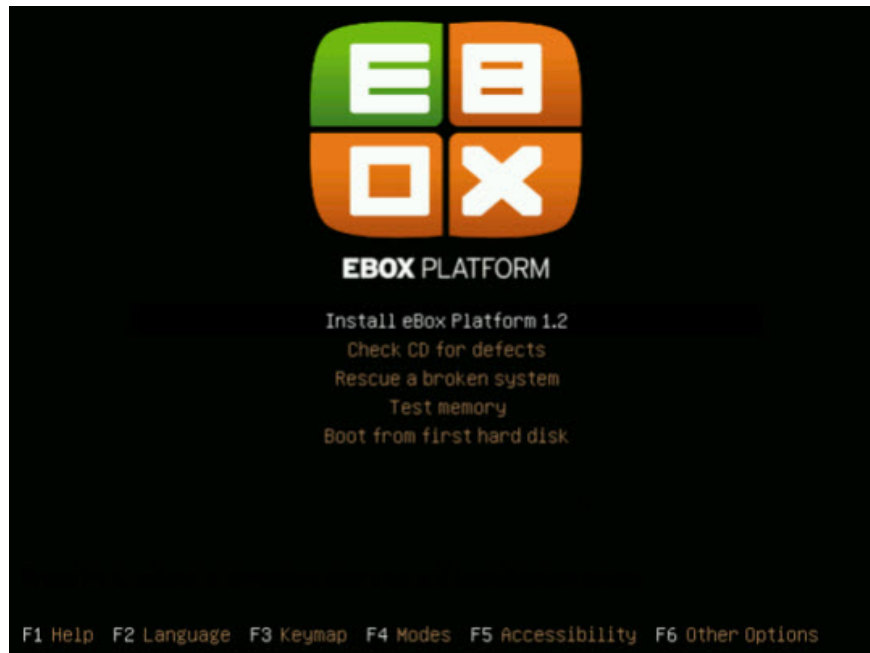
In the following article, TipsMake.com will introduce you how to use eBox as Windows Primary Domain Controller. And when finished, you can also use eBox Platform 1.2 for users and manage shared resources on Windows domain systems.

Install eBox server

The installation process can be done in two different ways:

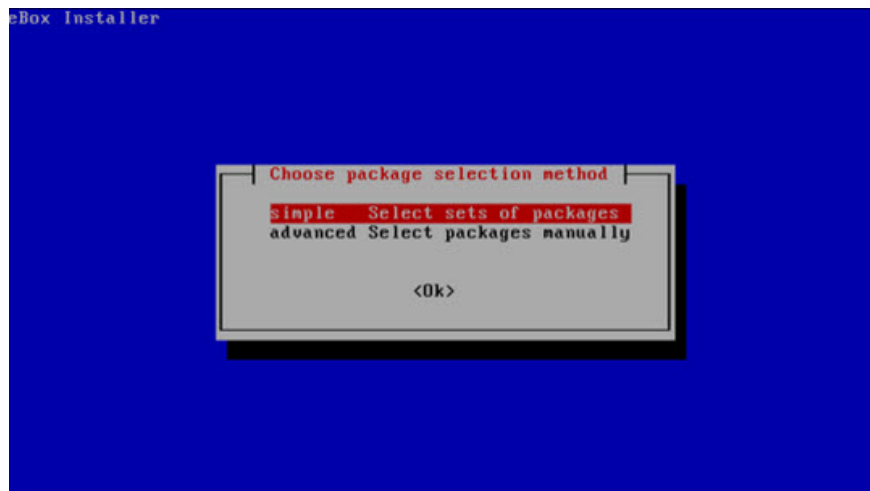
Using the eBox Platform Installer (recommended)
Based on Ubuntu LTS Server Edition system available

In the second case, you need to add the eBox Platform PPA repositories to the source list and then install the packages as usual.

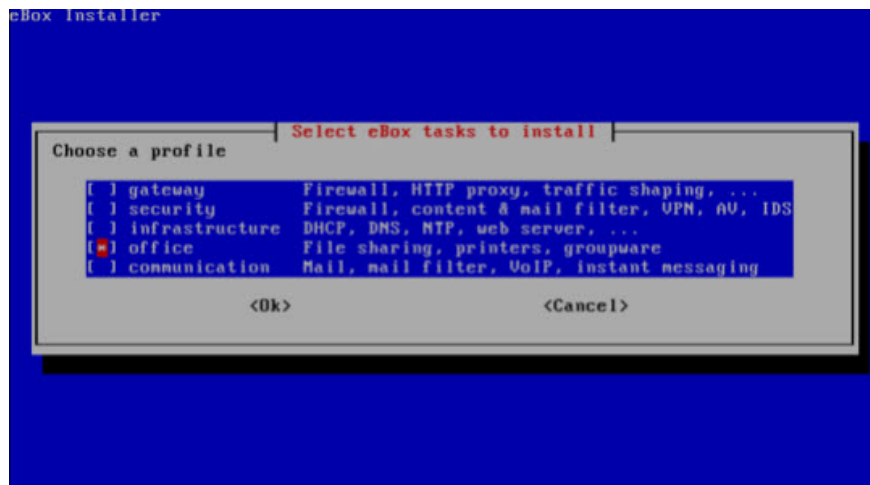


The eBox Platform installer is based on the Ubuntu installer platform, which you can refer to in this article.

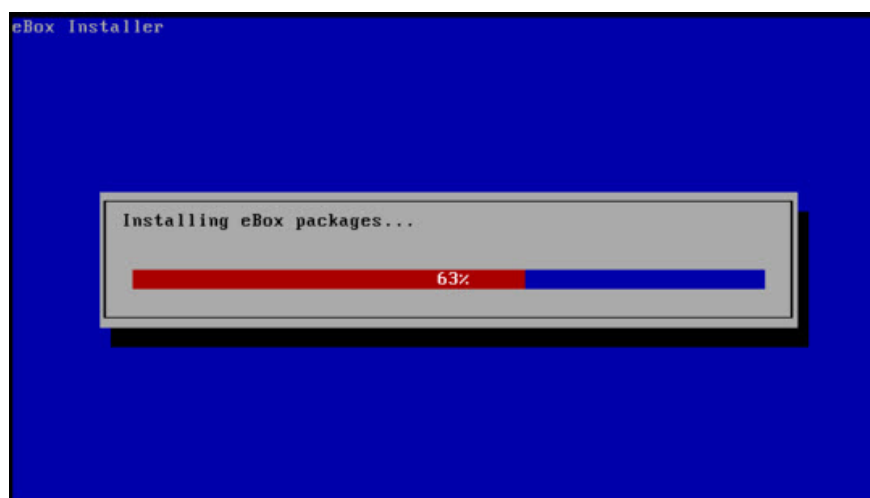
When the basic installation is finished, the system will restart and start the main installation. First is the mode (basic and advanced), in this article we choose simple - simple:



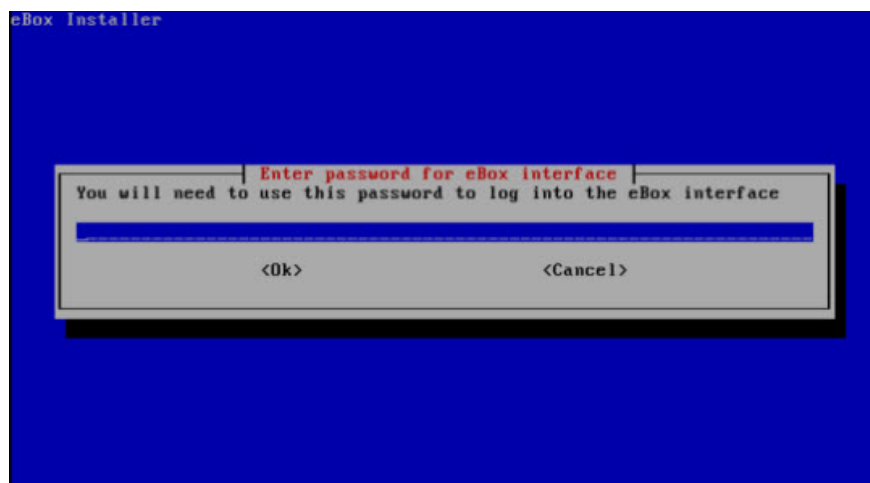
Then you will get the list of suitable software. And in this case we choose Office that contains all the necessary components for PDC. However, users can still change, add or remove these options in the following steps:



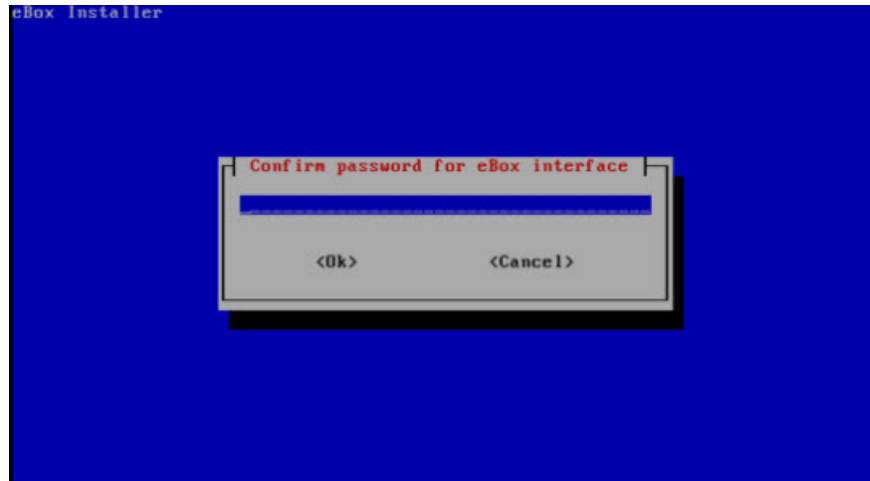
Installation process begins:



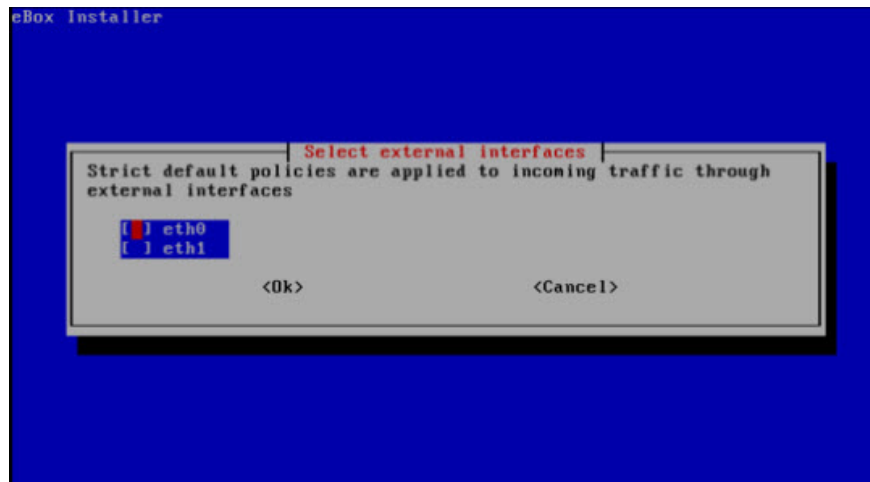
When finished, you will have to enter any password to access the eBox Platform via the web interface:



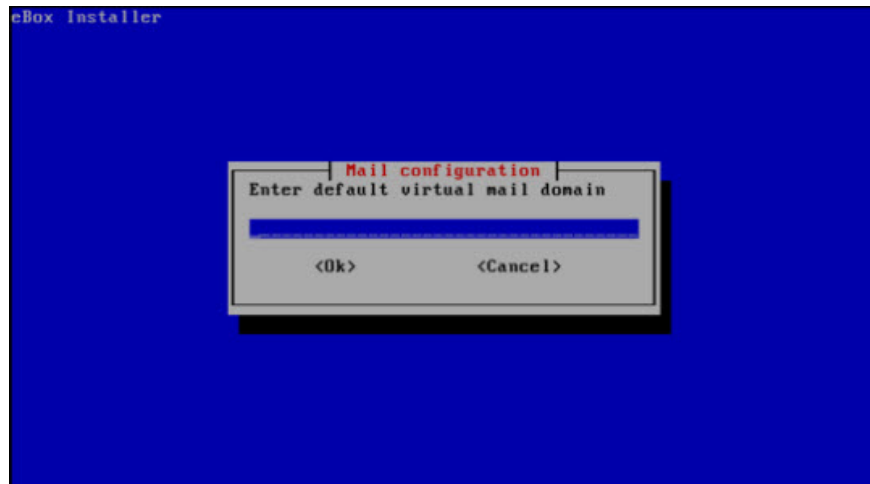
Confirm password again:



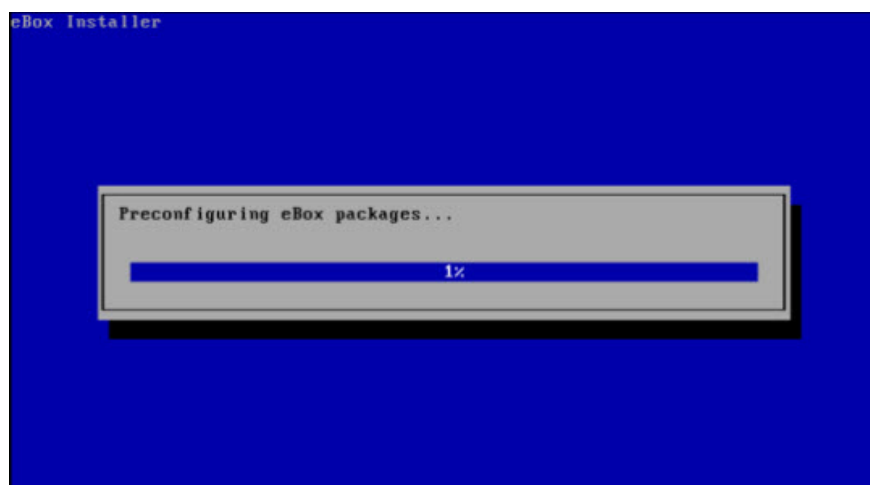
The installer will try to set up and customize some components with basic parameters. First, the application will ask you if there are any external connections - external (not on the local network). Strict policies for external traffic to the network system will be applied, depending on the server's role:



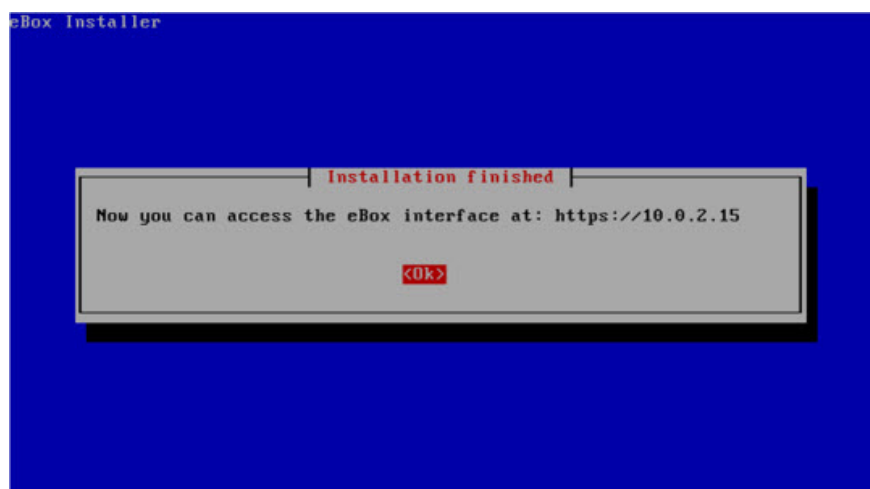
Next, the program will ask for the default mail virtual domain name value. In this article, we do not use an email server, so enter any name you like:



When answering all the following questions, each module you install will be pre-set:

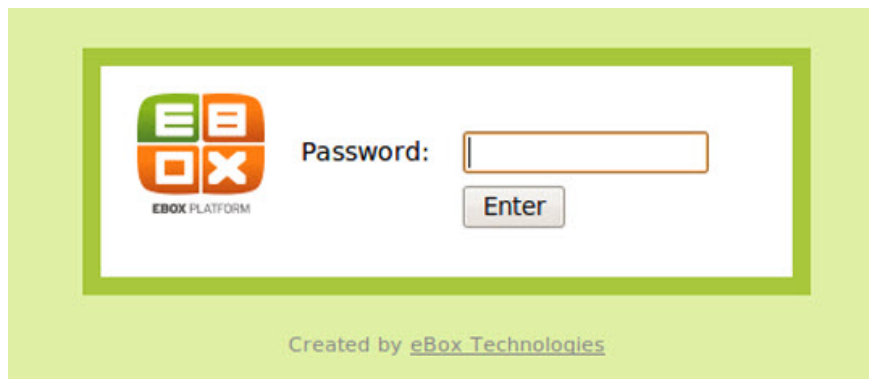


Once completed, the program will give a notice of address to access the eBox Platform web interface:

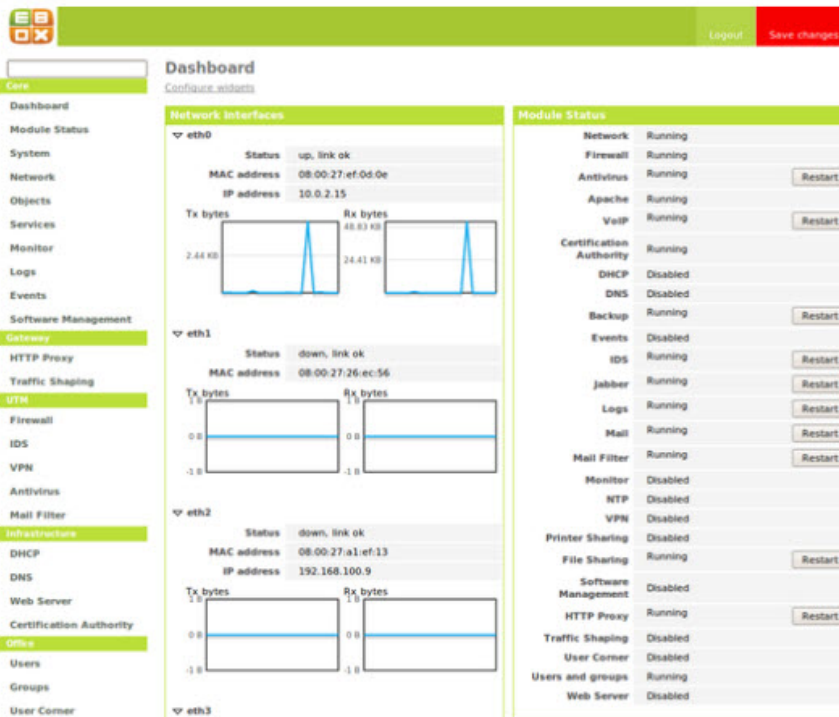


Login with web interface

After completing the above steps, the user is ready to log into the system via the web interface. Enter the address provided in the previous step (here is *https://10.0.2.15*):



Enter the admin password you declared in the installation step above. This is the general page of the eBox:



Module	Status	Action
Network	Running	
Firewall	Running	
Antivirus	Running	Restart
Apache	Running	
VoIP	Running	Restart
Certification Authority	Running	
DHCP	Disabled	
DNS	Disabled	
Backup	Running	Restart
Events	Disabled	
IDS	Running	Restart
Jabber	Running	Restart
Logs	Running	Restart
Mail	Running	Restart
Mail Filter	Running	Restart
Monitor	Disabled	
NTP	Disabled	
VPN	Disabled	
Printer Sharing	Disabled	
File Sharing	Running	Restart
Software Management	Disabled	
HTTP Proxy	Running	Restart
Traffic Shaping	Disabled	
User Corner	Disabled	
Users and groups	Running	
Web Server	Disabled	

Enable or disable the module

The next step is to turn off the modules that are not really needed with the PDC server. To do this, select the Status Module in the left menu bar, which will list the installed eBox modules and checkboxes to enable or disable the corresponding modules:

Module Status Configuration

Module	Depends	Status
Network		<input checked="" type="checkbox"/>
Firewall	Network	<input type="checkbox"/>
Antivirus		<input checked="" type="checkbox"/>
Backup		<input checked="" type="checkbox"/>
Events		<input type="checkbox"/>
Logs		<input checked="" type="checkbox"/>
Monitor		<input checked="" type="checkbox"/>
Software Management		<input checked="" type="checkbox"/>
Users and Groups		<input checked="" type="checkbox"/>
Web Server		<input type="checkbox"/>
Mail	Network, Users and Groups	<input type="checkbox"/>
File Sharing	Network, Users and Groups	<input checked="" type="checkbox"/>
User Corner	Users and Groups	<input checked="" type="checkbox"/>
Groupware	Web Server, Mail	<input type="checkbox"/>
Printer Sharing	File Sharing	<input checked="" type="checkbox"/>

In the default installation mode, all of these modules are in the active state. Some essential modules for PDC server system:

Network

Logs

Users and Groups

File Sharing


Printers

Antivirus

Create a group

For the convenience of management, you should create and divide user groups in the domain. To create a group, select **Groups** -> **Add group** . Enter the group name and brief description:

Groups

 Changes in user accounts take effect immediately, they do not need to be saved.
Changes related to printing, file sharing and Jabber service do need to be saved in order to be effective.

Add Group

Group name:

Comment:
(Optional value)

After this step, you will be redirected to the Edit group page to set, change, add or delete group properties. In this article, we create an IT group.

Create user account

In the left menu bar, select **Users** -> **Add user** . A sample form will appear to add user accounts, including the following fields:

User name

First name

Last name

Comment

Password and Retype password

Group

Users

Changes in user accounts take effect immediately, they do not need to be saved.
Changes related to printing, file sharing and jabber service do need to be saved in order to be effective.

Add User

User name: pdcadmin
First name: Malcom
Last name: Bradley
Comment: Role for PDC admin
Password:
Retype password:
Group: [v]
[Create]

Here we will create an account with the name pdcadmin, other information at will. Once created, you will automatically be redirected to the Edit user page. Here, the administrator can activate, turn off the account, have access to the system or not, have administrative rights or not:

PDC/File sharing account

User account: Enabled [v]
Administration rights: [checked]
Disk quota limit (MB): 100
[Change]

General settings in PDC

To adjust file sharing settings, in the left menu select File sharing. In the General settings tab, check the Enable PDC box to enable the PDC feature. Or you can change the default domain name value to a name that matches the manager's needs and ideas. Here, we will use the ebox name as the domain name, or change the netbios name - this parameter is used to identify the server when using the netbios address. And of course, this name is not the same as the domain name, where we will use the ebox-server name as the netbios name value.

File sharing options [\(show help\)](#)

General settings | **PDC** | Shares | Antivirus

Enable PDC:

Domain name:

Netbios name:

Description:

Quota limit: Mb
Default value for new users

Enable roaming profiles:

Drive letter:

Set PDC password customization policy

Domain administrators often apply strict policies to passwords because users do not pay much attention to this issue, 1 is to leave the password too short, 2 is too easy to remember and guess, 3 is the person Use not often change the password.

The first field is *Password Length* , the minimum number of characters allowed is 8.

Next is *Maximum Password Age* , set this value to 180 days to make sure the user has to change the password at least twice a year.

The last field is *Enforce password history*, this feature is to force users to never reuse the old password for the second time. Here we set a value of 5, meaning that the last 5 passwords cannot be reused.

General settings | **PDC** | Shares | Antivirus

Minimum password length: characters

Maximum password age:

Enforce password history:

Save changes

If you pay close attention, you will see a small Save changes button on the right on the top of the work window, if you have not applied the changes, the button will be red, otherwise green.

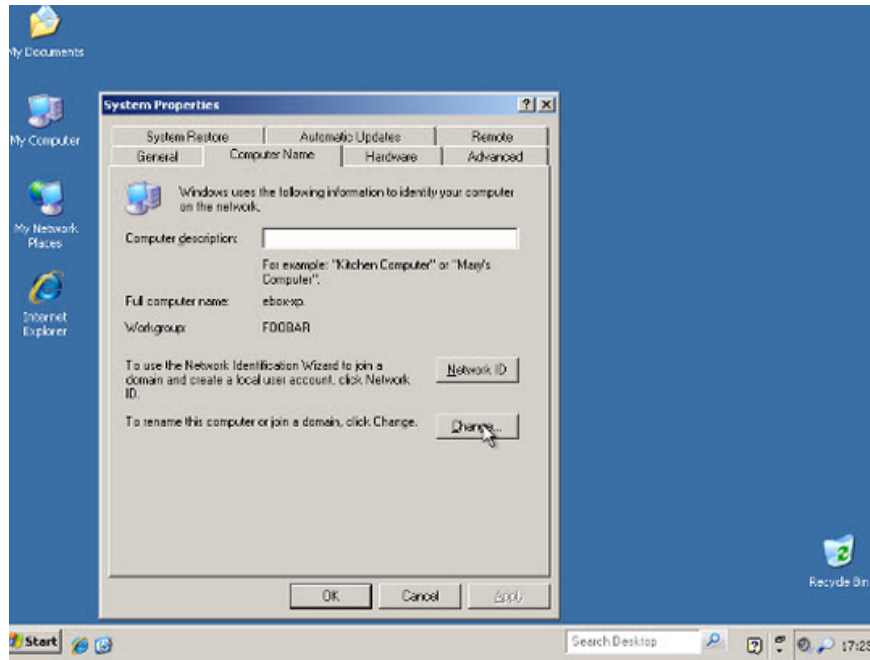


Add computer to PDC

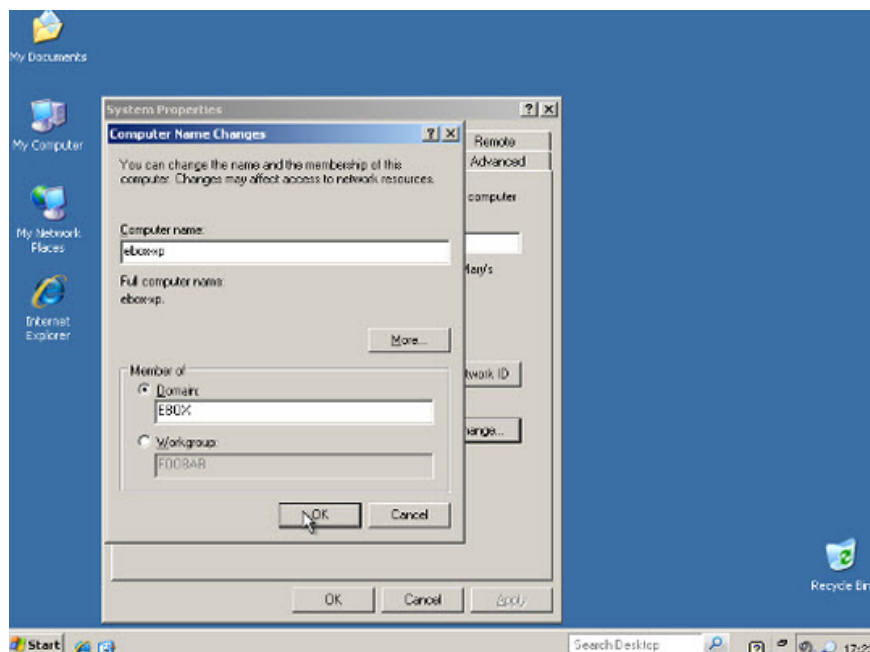
Now that we have a stable PDC server system, we will proceed to add computers to the domain system. To do this, we need to know the domain name in use, the username and password of the user account with administrative rights. Here is the account pdcadmin.

Component computers want to add the domain system to the same network and have CIFS Windows compatibility capabilities (eg Windows XP Professional). The eBox surface connected to this network is not marked as an external network - external. In this article, assume that you are using Windows XP Professional operating system.

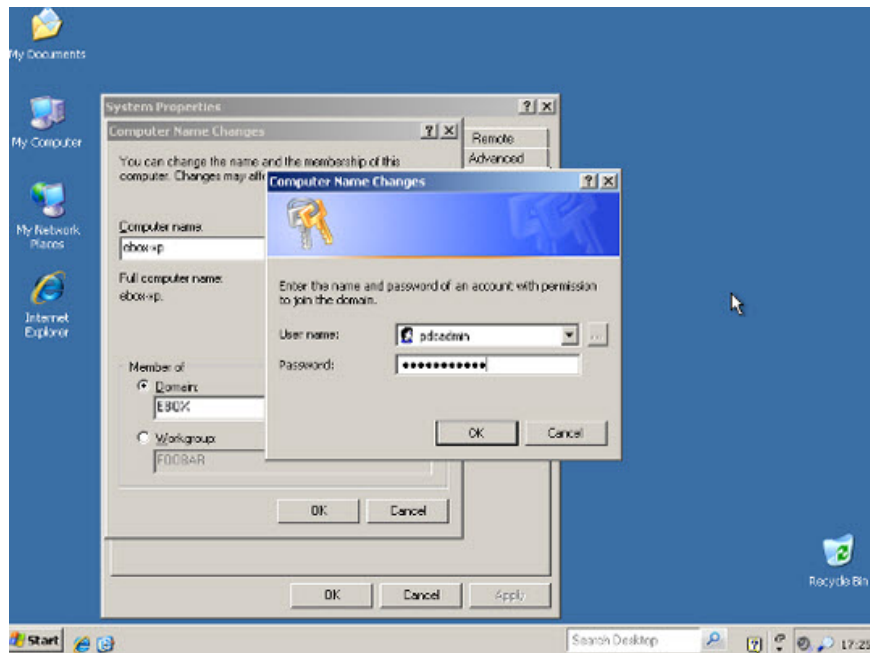
Log in to the Windows operating system, select **My PC -> Properties** , change the properties needed to join the new domain:



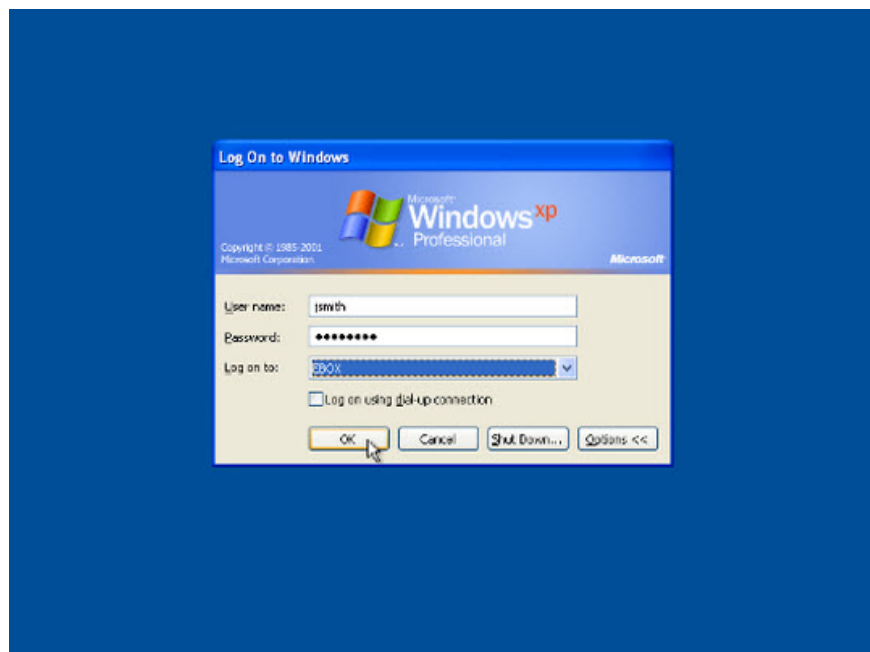
In the next window, enter the domain name to join (here is the ebox) and click **OK** :



A small login window appears, you must log in with an account with administrative rights:



If you perform all of the above steps correctly, a screen welcomes you to join the new domain. After joining, you must restart the computer, and then log in normally as a member of that domain:



If you need more references about the process of adding any computer to an existing domain, you can refer to Microsoft documentation [here](#).

Set sharing properties

Now, we have a domain with separate user accounts, groups and computers. Next, we will proceed to add file sharing service among different users. And there are 3 sharing services in eBox:

Users home directory shares : are automatically created for each user, automatically activated with the user as a shared map with the character defined in the General Settings tab. And only this user can connect to the root share folder.

Groups shares : not automatically created, you need to set this attribute in the Edit Group section, and name this attribute. And all of the groups are granted access to this shared item, and of course cannot change, add, or delete shared data in this section.

Sharing directory for this group

Directory name:

General shares : eBox allows us to define, create shared items with access to access controls lists - ACL

To illustrate this feature, we will create the document sharing folder of the IT team, and all members of the IT team can read the document, pdcadmin account will have full decentralization rights for the the rest.

To create a sharing service, select the **Shares** tab in the *File sharing* menu. Here, we will see the shared list, select **Add new** to start. The first parameter in this window allows the system to enable or disable sharing mode, **Share name** to name (here is IT documentation), comment to comment on this sharing item (eg Documentation and knowledge base for the IT department). Finally, the path to share data on the server, there are 2 options under Directory under eBox or File path (look at this example we choose Directory under eBox and name the folder itdoc)

File sharing options [\(show help\)](#)

[General settings](#) [PDC](#) [Shares](#) [Antivirus](#)

Adding a new share

Enabled:

Share name:

Share path:
Directory under eBox will automatically create the share.directory in /home/samba/shares
File system path will allow you to share an existing directory within your file system.

Comment:

Shares

Enabled	Share name	Share path	Comment	Access control	Action
<input checked="" type="checkbox"/>	timetables	tt	Timetables for the organization		

10 Page 1

After initializing, we need to choose the correct ACLs. To do this, scroll to the shared list, find the right row and click the **Access Control** field.

Adding a new share

User/Group:

Permissions:

Be careful if you grant administrator privileges. User will be able to read and write any file in the share.

Share configuration

User/Group	Permissions	Action
IT	Read only	

10 Page 1

Apply Antivirus method on shared data

eBox has a mechanism to scan shared data files to detect viruses. The review process is conducted when the data is written, accessed and make sure that the shared data has been checked by the security program. If a file is found to be infected, it will immediately be quarantined in the ebox-quarantine folder that only users with administrative rights can access:

File sharing options [\(show help\)](#)

Antivirus [\(show help\)](#)

Antivirus default settings

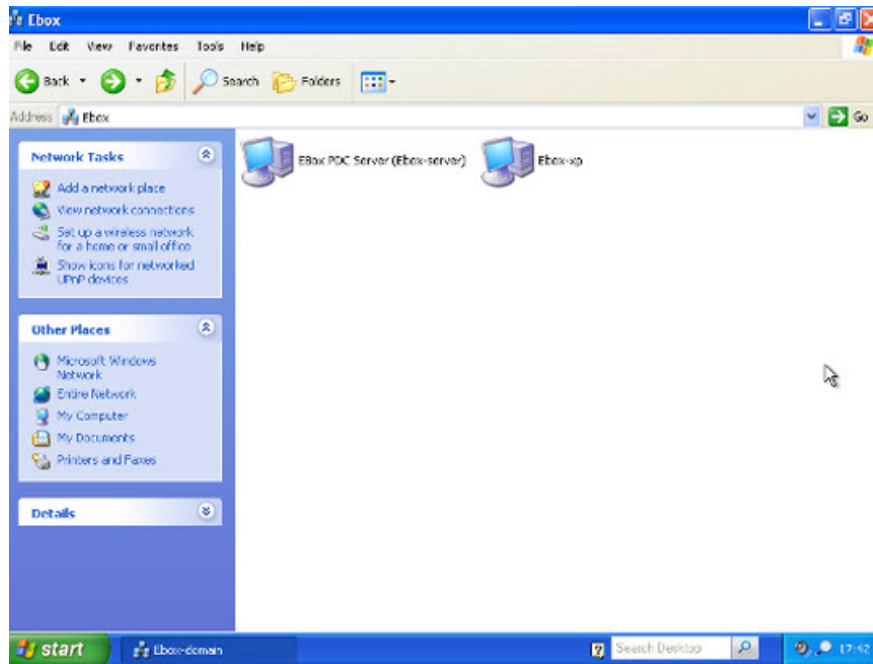
Scan:

Samba shares antivirus exceptions

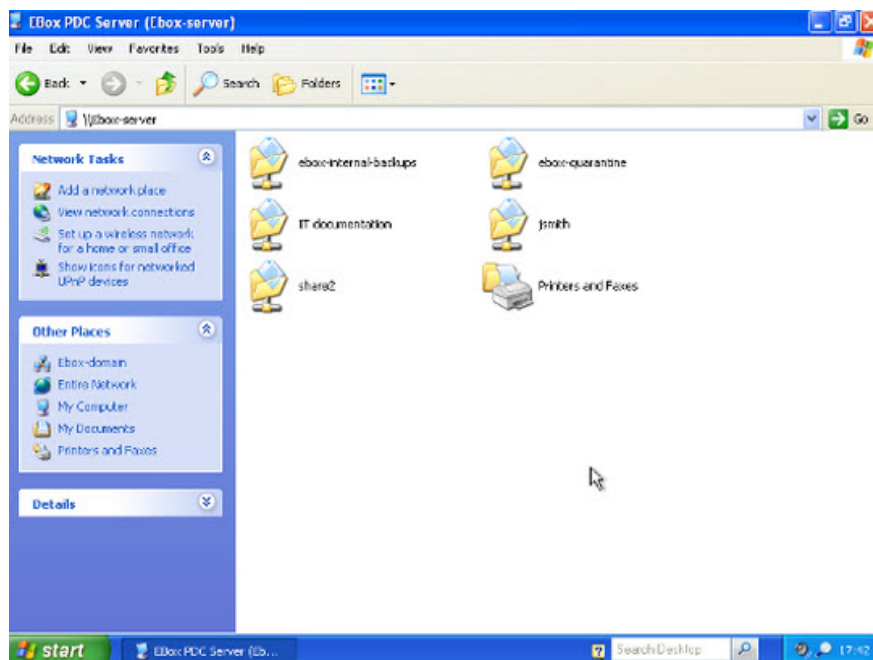
[Add new](#)

Access the shared folder

Above we created the shared folder, now we will have to access them from elsewhere in the system. When logging in to a domain computer, users can access resources in the system through the Entire network window, using the **My PC -> Network Place link** and select **Other places** item on the left. :



Then select the **server eBox** :



Besides, the user's root share folder will also point to the virtual drive with the character defined in the PDC section. On GNU / Linux systems you can use the smbclient application to access these shared resources.

Create a login code

eBox supports the use of Windows logon script. These scripts will be loaded and executed each time the user logs in to the domain system. When writing code, it must be very careful, because with Windows computer systems with statements written in DOS order. To ensure users can do this in a Windows environment, you

should use the flip tool of Unix to switch between formats.

When you have completed this code, you need to save it as logon.bat in the */home/samba/netlogon* directory on the server eBox.

This is the code used in the article, which automatically accesses timetable shared folders on the Y drive:

```
# contents of logon.bat search server  
# map timetable share  
echo "Timetable Mapping share to drive Y: ."  
net use y: ebox-servertimetable
```

Good luck!

You finished reading the article "**Use eBox as Windows Primary Domain Controller**" edited by the [TipsMake](#) team. We hope this article has provided you with many useful tech tips and tricks. You can search for similar articles on tips and guides. Thank you for reading and for following us regularly.