

# Use Android operating system on Windows Mobile Phone

In fact, many Windows Mobile phones can still install Android, many of us don't know. In the following article, TipsMake.com will introduce to you how, and the phone models needed for application with Android.

***TipsMake.com*** - You are the favorite of the unique features of the Android mobile operating system but your phone is using Windows Mobile or not compatible? Need to buy another phone to use Android? In fact, many Windows Mobile phones can still install Android, many of us don't know. In the following article, TipsMake.com will introduce to you how, and the phone models needed for application with Android.

**Update:** This article was written from 2010 (6 years ago), so this approach no longer works on modern phones. Readers can still run Android on Windows Mobile phones but currently TipsMake.com does not have a good solution to provide you to read in this case. You can try the way in the article, but the writer is not sure about the level of success.

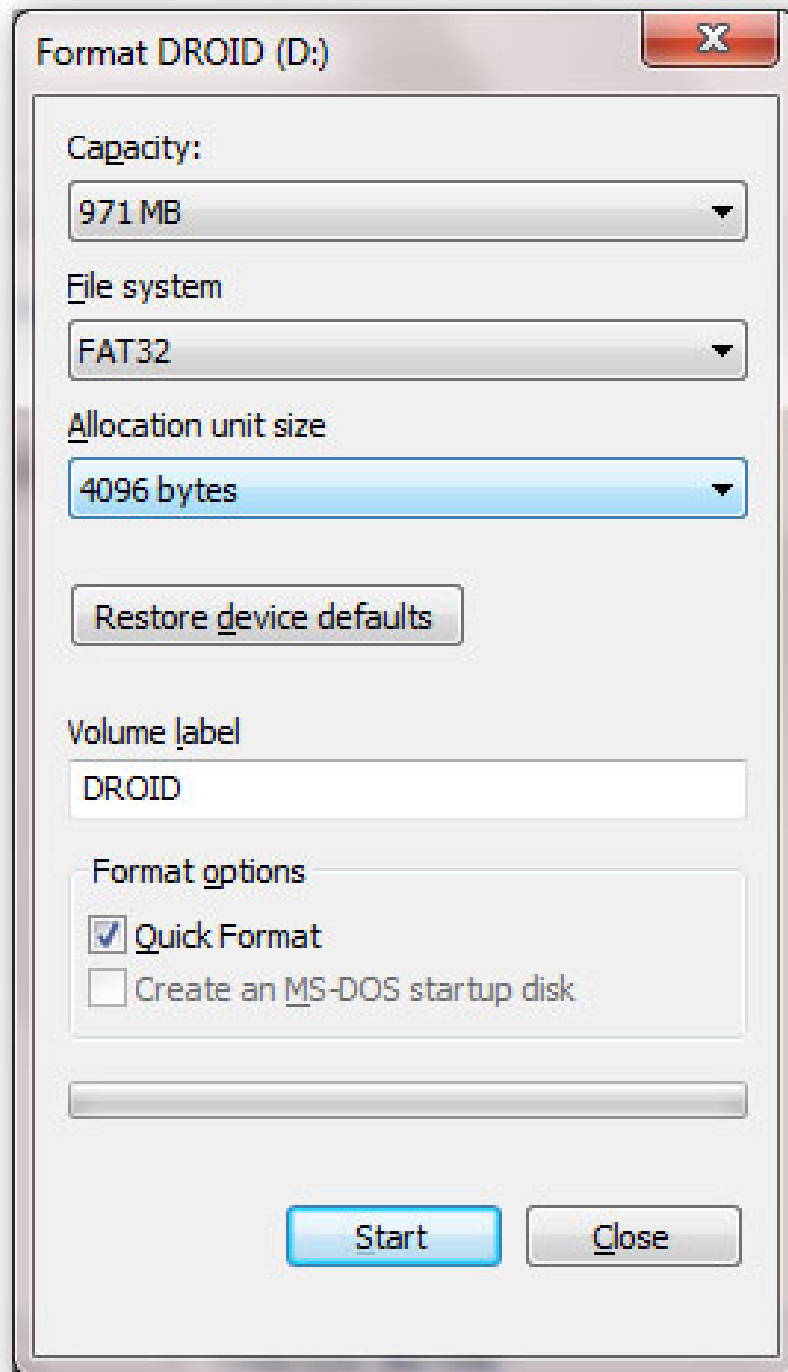


## Instructions for installing Android

To do this, you'll need a microSD card (not SDHC - usually less than 2GB), and Windows Mobile support (see details below). You can check if the microSD card is compatible by looking at the label labeled HC:

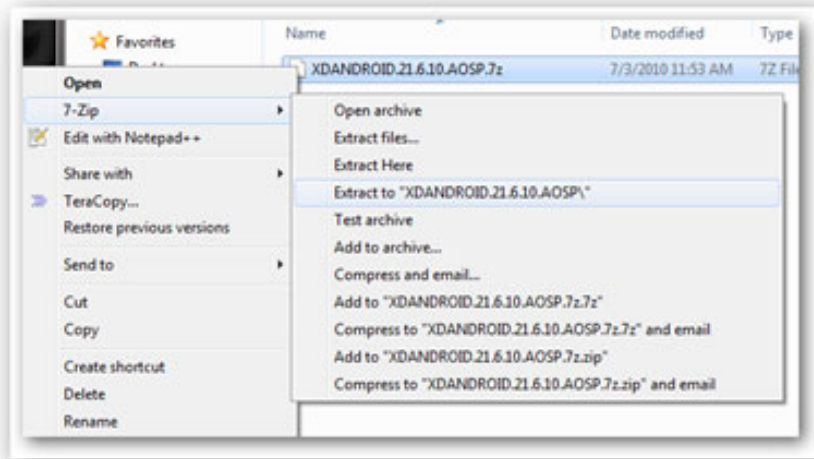


The microSD card needs to be formatted in FAT32 format. Connect the memory card to your computer, right-click and choose format (you should back up all important data on the card if necessary):

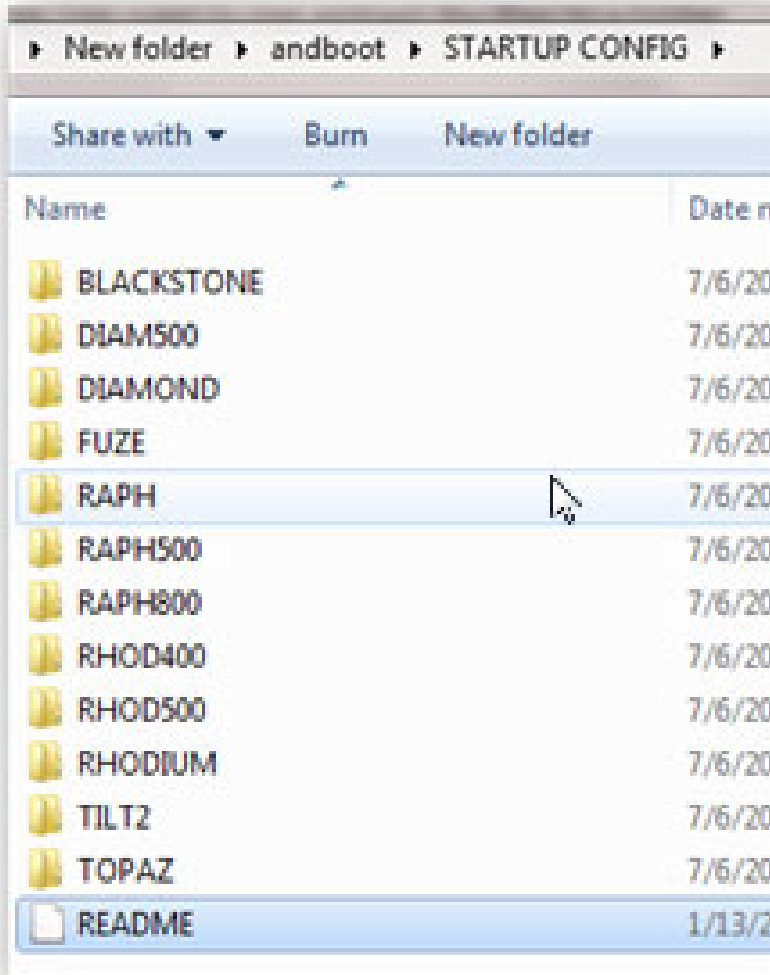


After formatting, the next step in the installation process is to find the correct Android port for the phone (see details below), as well as the Android version you want to install. These versions start at 1.0 but usually we should find the right port for version 1.6 or 2.1.

When selecting the appropriate version, unzip the entire file using 7-zip:

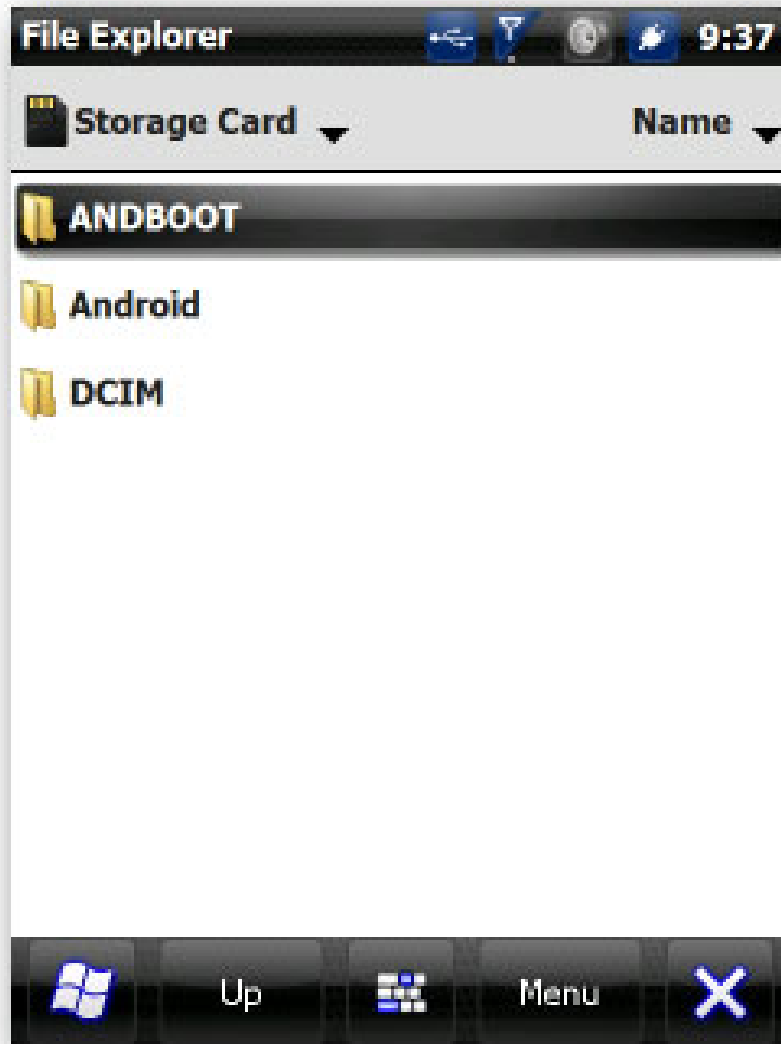


After extracting, you will see an *andboot* folder, inside there will be another subdirectory called *startup config* or *startup* . Continue to open that folder, and navigate to the **startup.txt** file, and inside each folder there is a separate *startup.txt* file. Copy the file corresponding to your phone's model to the root of the *andboot* folder. This file has the task of 'notifying' Android about the phone's hardware information, such as screen size, RAM memory . so choosing the right file is important. If you are still wondering about the phone name or series, please refer to the document below for more details:

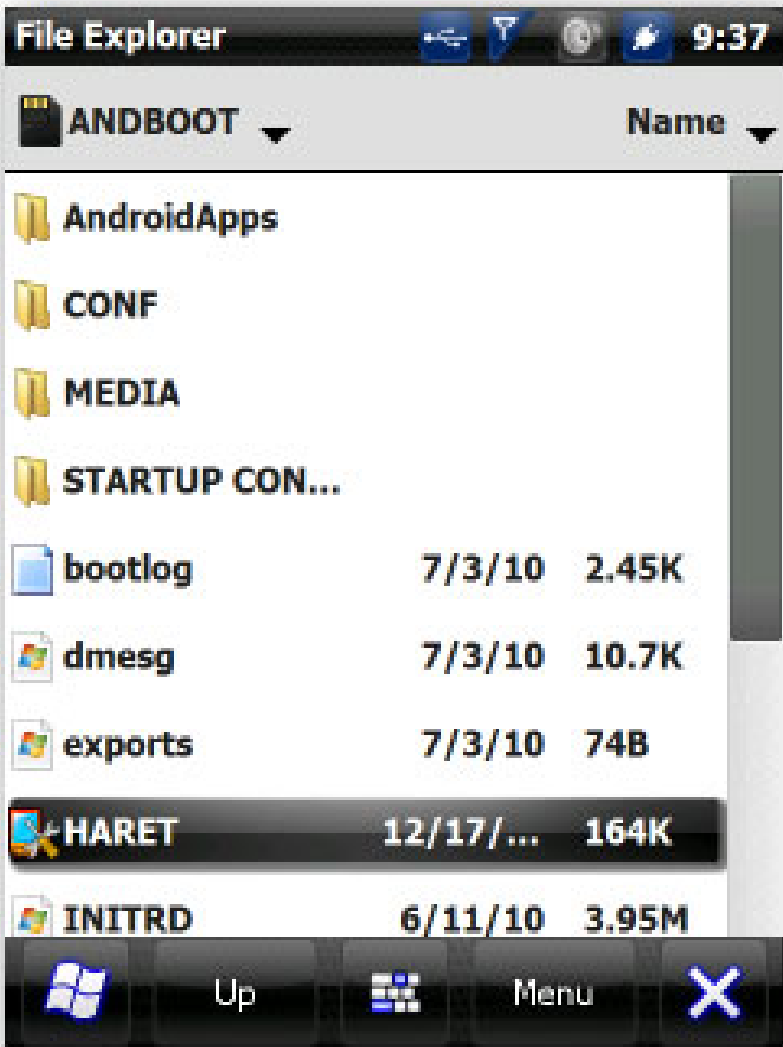


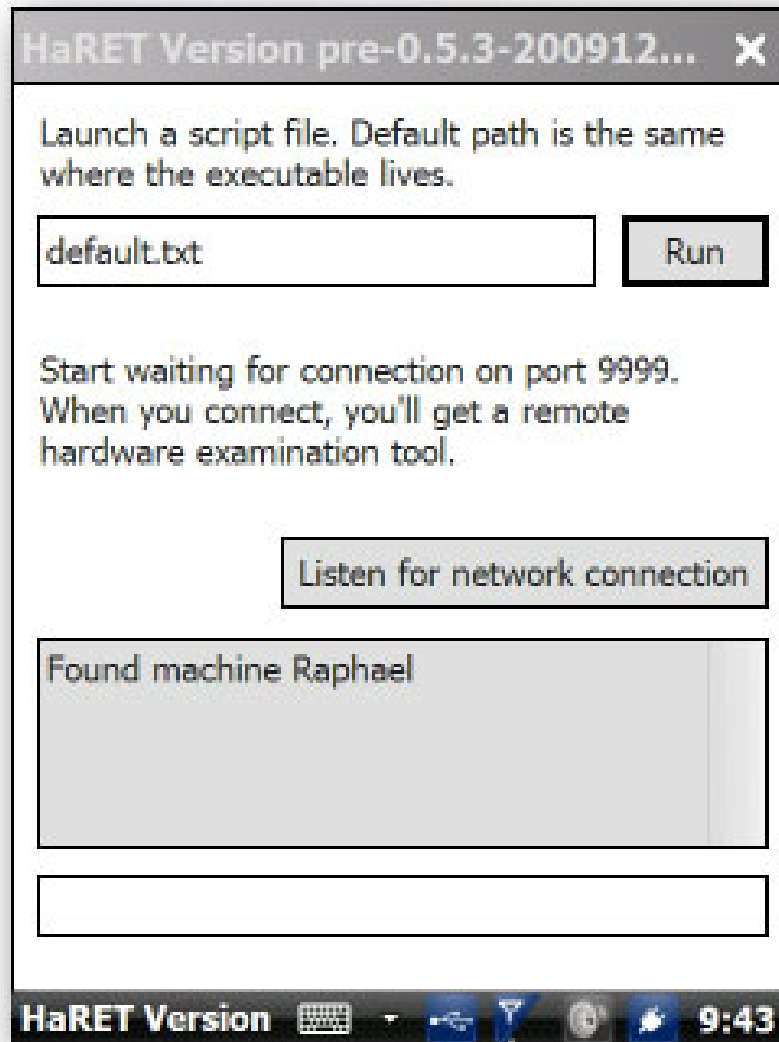
After transferring the correct file `startup.txt` to the *andboot* folder, copy the *andboot* folder to the newly formatted microSD card.

Then plug the microSD card back into the phone, open the file browser and point to the location of the memory card. Remember to plug the charger into the phone before continuing if not, or it may hang in the middle:



Open the andboot folder and run the **haret.exe** file. If the startup.txt file is properly copied and in the correct location in the andboot folder, simply press the **Run** button, a boot screen will appear when HaRET turns off Windows Mobile and starts Android:





Please note that this first boot process will take longer than normal startup times, so be patient and pay attention to what is happening on the phone:

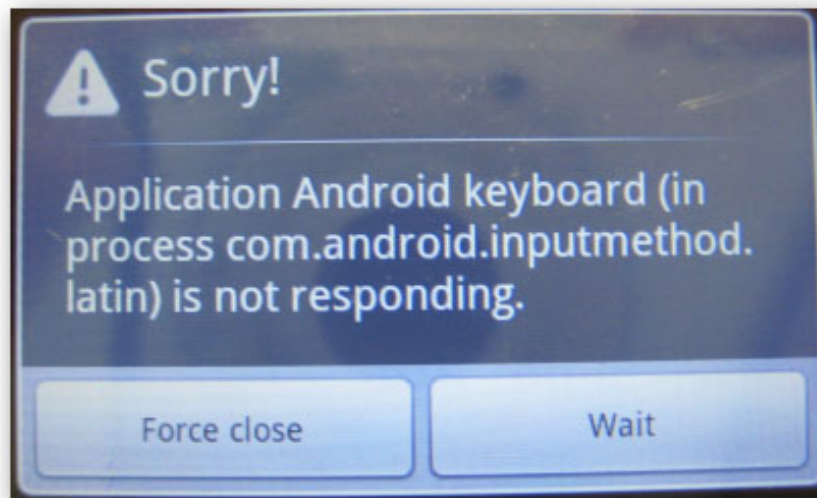


```
32 dst=1:c5e395c0
6.7174371 htc_pwrSink: ID 8, Util 100%, Total 38000
6.7254941 [RPC] READ on ept c5e395c0 (28 bytes)
6.7336731 rrpcservers_probe
6.7422181 [RRR] x NEW_SERVER id=1:c5e39560 prog=300000
0
6.7545771 [RRR] send control message cmd=4 srv.cmd=4
=3000005d:0 id=1:c5e39560
6.7668151 mmcl: Command timeout
6.7781671 -rpc_server_register: 3000005d:00000000
6.7844231 mmcl: Command timeout
6.7956231 -rpc_server_register_all
6.8016961 mmcl: Command timeout
6.8131101 -rrpcservers_probe
6.8191831 mmcl: Command timeout
6.8319391 sdslot_switchodd: Invalid UDD 15 specified
6.8702691 IMEM NEW: VAL = 0
6.8762201 [RRR] x REMOVE_CLIENT id=1:c5e395c0
6.8821711 [RRR] send control message cmd=6 srv.cmd=6
=00000001:c5e395c0 id=-1071388196:c0055b38
6.8941951 clock_late_init() disabled 15 unused clock
6.9002381 GPS init
6.9065851 GPS rfkill init
6.9128411 Rhod proximity init
6.9212641 init_battery_settings, UREF=1248, 0.5 UREF
6.9328301 init_battery_settings, ADC_A=988, ADC_B=16
```

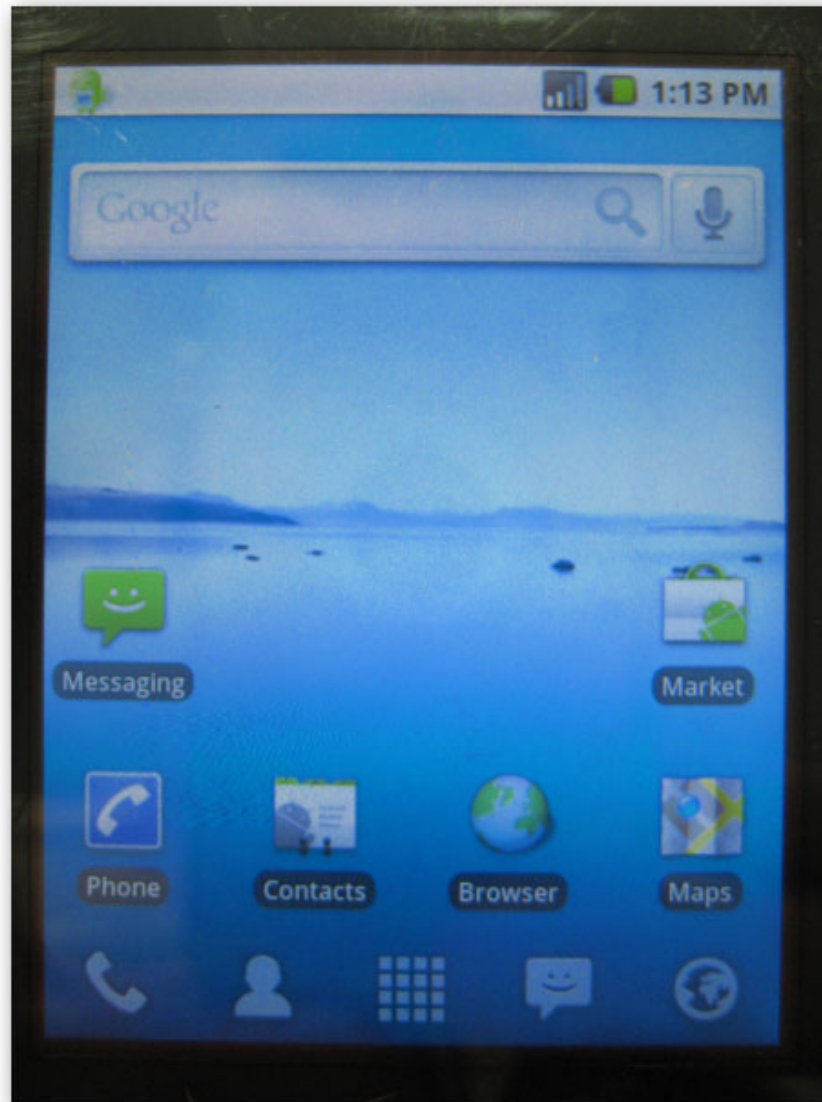
When this process is finished, the phone 'Android' will move to the familiar *Welcome* screen of any operating system, and your next job is extremely simple, just like when creating a new email account.



Typically, the operating system will need at least 10 minutes to integrate and synchronize data and information on the phone. When this process is finished, all system activity will return to normal, and you can start with installing the application. If you do not wait until the synchronization process above ends, the process of using later will encounter many obstacles such as hanging in the middle, not installing applications .:

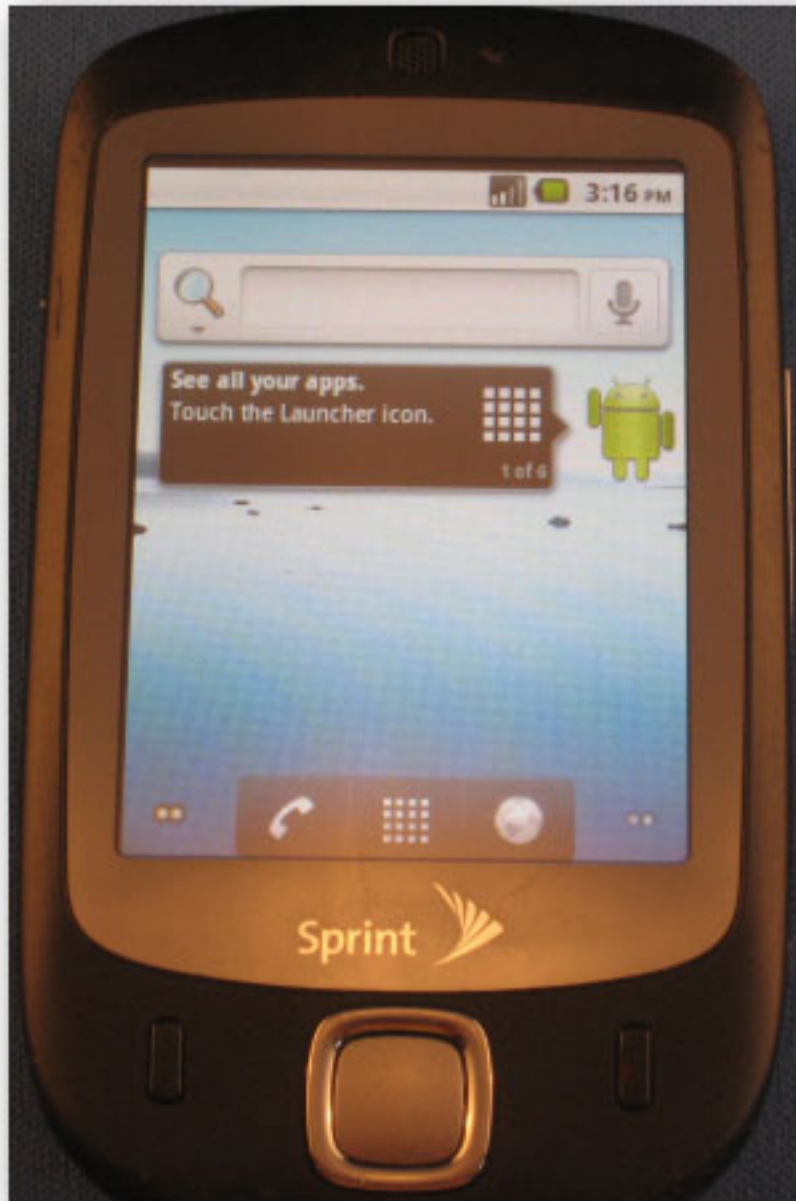


Change properties, set and install any application you want, and all will be stored directly on the memory card during the next startup. All Android phones from microSD cards will automatically return to Windows Mobile when you restart the device. To run Android, simply open the file browser and run the haret.exe file:



### **The Android port**

In fact, there are a few different Android ports for Windows Mobile devices and each port only supports a certain line of devices, and each of those devices uses a variety of hardware configurations. But most advanced mobile devices today support touch screen, hardware button, cell phone radio, data connection and data sharing, but some ports do not support bluetooth, GPS or energy manager:



Most Android OS developers on phones using Windows Mobile began testing on the HTC Touch (most commonly HTC Vogue and Verizon xv6900). The HTC Touch series meets 100% of the common features but there are a few small applications that cannot be used with the original Windows Mobile ROMs. One of the main differences of Android for Touch and Android for other phones is that the Touch line allows Android to be 'flashed' directly to the phone's ROM (NAND memory). This is one of the turning points of Android developers with increasing battery life and significantly improved operating speed. Using Android on the Touch can still be applied by the way, but the developer recommends that users should flash the phone's NAND memory before running Android.

Android ports for HTC Touch have been used on the following phones with a huge success rate: *HTC Nike* (Neon), *HTC Polaris* (Touch Cruise), *HTC Kaiser* (TyTN II) and *HTC Titan* (Mogul, xv6800).

Note that HTC phones all have their own name code derived from HTC, and in many cases each company will name its product by brand and some other special identifiers. For example, HTC Titan is called Mogul on Sprint and xv6800 on Verizon. To find the right Android phone port, start by finding the HTC start code, you can learn more about all of HTC's product lines [here](#).

Besides, XDAAndroid supports most HTC Windows Mobile touch screen products, and if you have bought a similar phone in the past year, your device will be supported with maximum support. this port. XDAAndroid runs directly on the phone via microSD card on the following phones: *Touch Pro* (Fuze, RAPH, RAPH800, RAPH500), *Touch Diamond* (DIAMOND, DIAM500), *Touch HD* (BLACKSTONE), *GSM Touch Pro2* (TILT2, RHODIUM, RHOD400, RHOD500), *GSM Touch Diamond2* (TOPAZ).

On the other hand, Andromnia is the Android port for Samsung's phone devices. Currently these ports are still in the pre-alpha stage and communication devices such as headset speakers will not work. If you want, you can check out the support features on the following phone lines: *Samsung i900* (GSM, global support), *Samsung i910* (CDMA, used by Verizon in the US), *Samsung i780* (Mirage) and *Samsung i907* (AT&T Epix).

Wing Linux is not as fast as XDAAndroid but is a perfect replacement if your phone is not supported by any standard port. Wing Linux can support many models with different success rates: *HTC Artemis*, *HTC Elf*, *HTC Elfin*, *HTC Excalibur*, *T-Mobile Dash*, *HTC Gene*, *HTC P3400*, *HTC Herald*, *T-Mobile Wing*, *HTC Opal*, *HTC Touch Viva*, *HTC Pharos*, *HTC Prophet*, *HTC Startrek*, *HTC Wizard* and *Asus P320*, *Galaxi Mini* .

Good luck!

You finished reading the article "**Use Android operating system on Windows Mobile Phone**" edited by the [TipsMake](#) team. We hope this article has provided you with many useful tech tips and tricks. You can search for similar articles on tips and guides. Thank you for reading and for following us regularly.