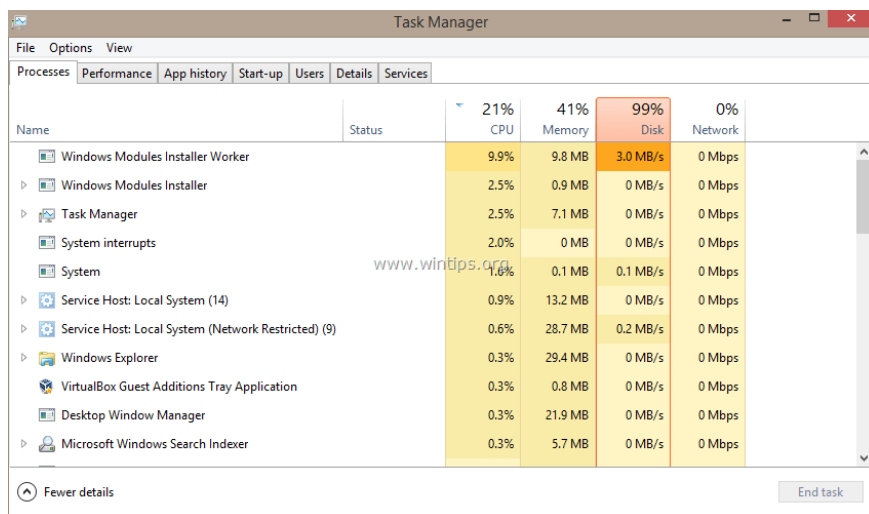


Unusually high CPU error correction due to TiWorker.exe on Windows 10 / 8.1 / 8

TiWorker.exe (Windows Module Installer Worker) is a process related to the Windows Update Service. This is an important process on the Windows Update service and programs that start with the computer. Usually TiWorker.exe runs in the background while the system checks for new updates and releases system resources.

TiWorker.exe (Windows Module Installer Worker) is the process related to the Windows Update Services service. This is an important process on the Windows Update service and programs that start with the computer. Usually TiWorker.exe runs in the background while the system checks for new updates and releases system resources.

However, the point worth mentioning here is that TiWorker.exe is the cause of unusually high CPU error on Windows 8.x and Windows 10 systems. So how to fix this error, invite you to refer to the article below Here of Network Administration.



1. Scan the virus on your computer

Viruses or malicious programs can cause unusually high CPU errors caused by TiWorker.exe. So to fix the error, you can use antivirus programs to find and remove viruses and other malicious programs on your computer and to fix errors.

Some effective anti-virus programs can be found here.

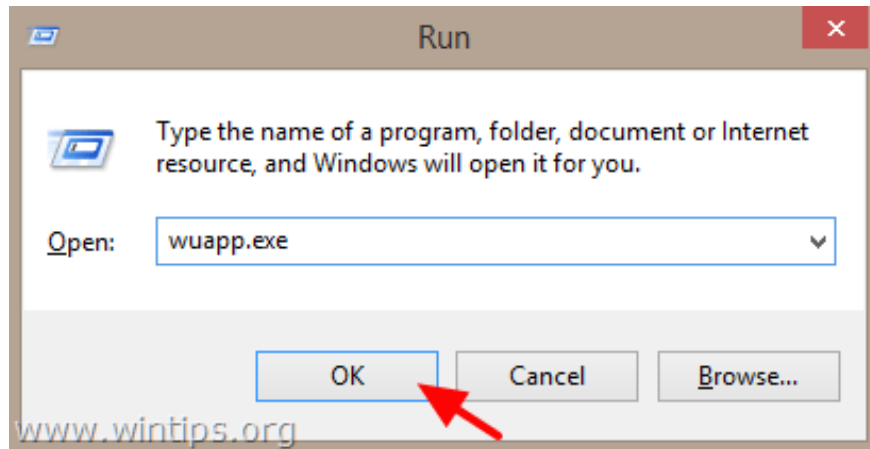
2. Install all available Update versions

Make sure your computer has the available version of Windows Update installed. To do this thing:

- On Windows 8, 8.1:

1. Press the **Windows + R** key combination to open the Run command window.
2. On the Run command window, enter the following command and press Enter to open Windows Update:

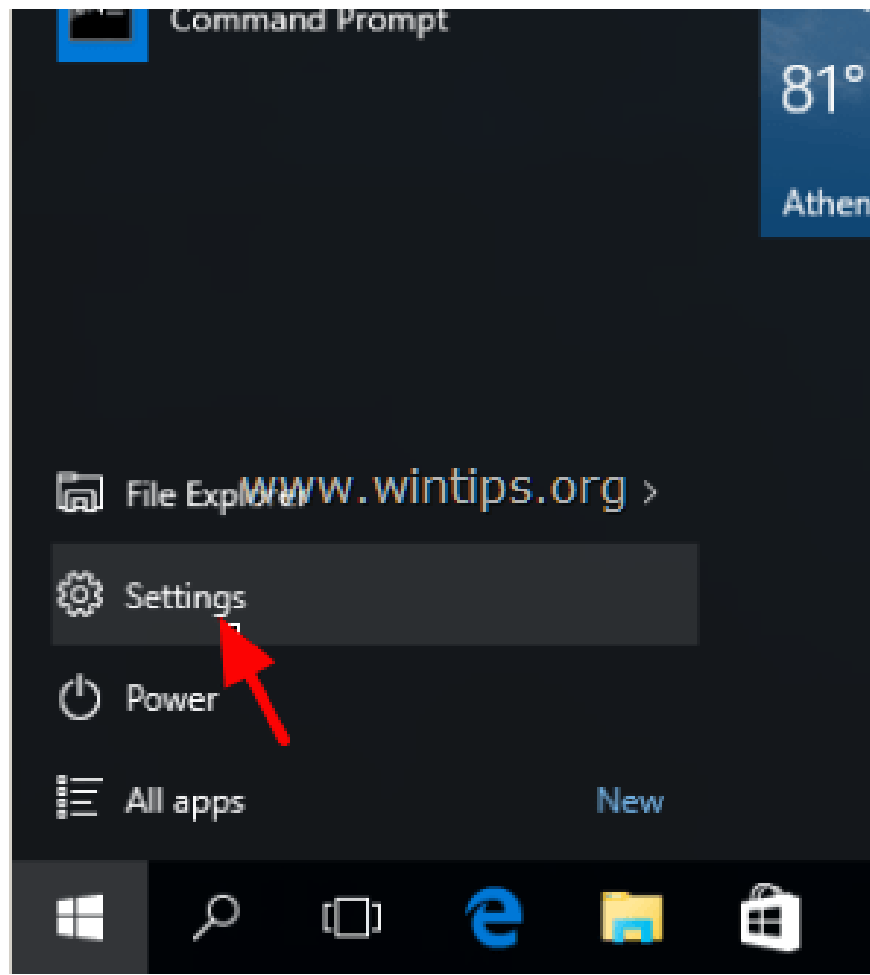
wuapp.exe



3. On the Windows Update window, click **Check for updates** , then install all the updates you find.

- On Windows 10:

1. Click **the Start button** and click **Settings** to open the Settings window.



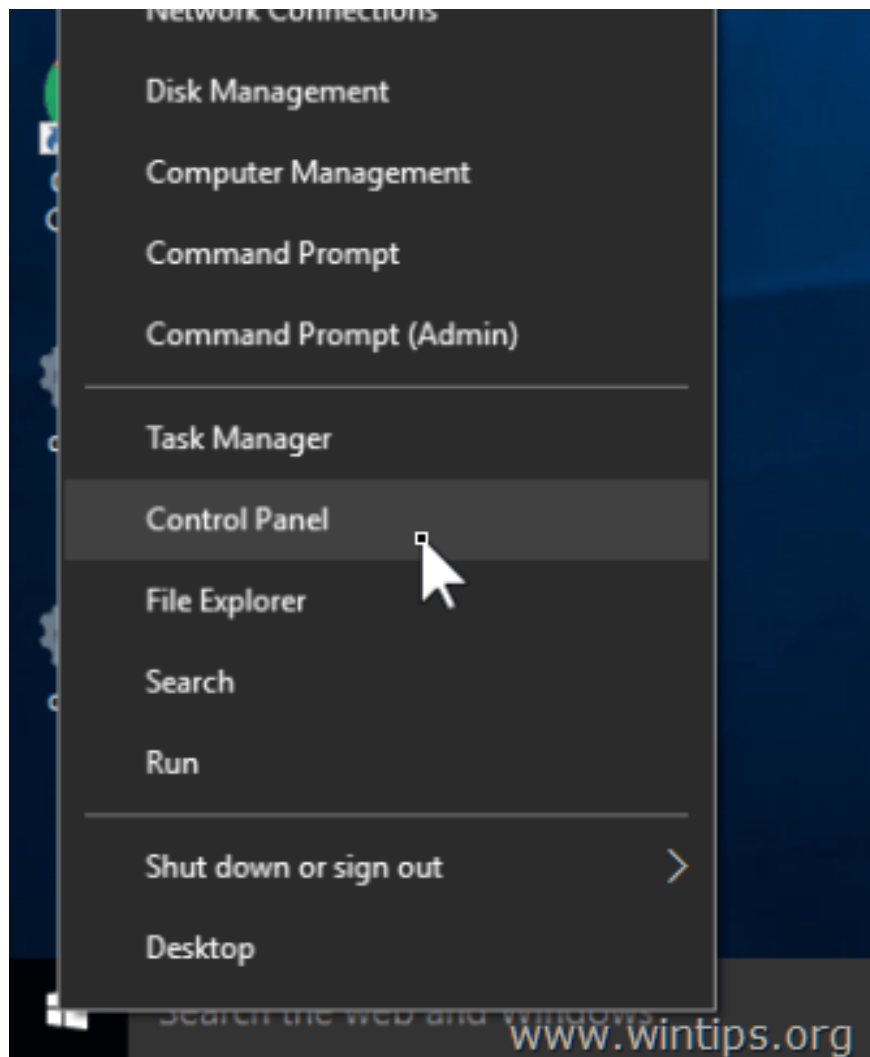
2. On the Settings window, click **Update & security**.

3. Next, click on the **Check for updates** button and then install all the updates you find.

3. Run System Maintenance & Windows Update troubleshooters

Run the System Maintenance troubleshooter to automatically fix system errors.

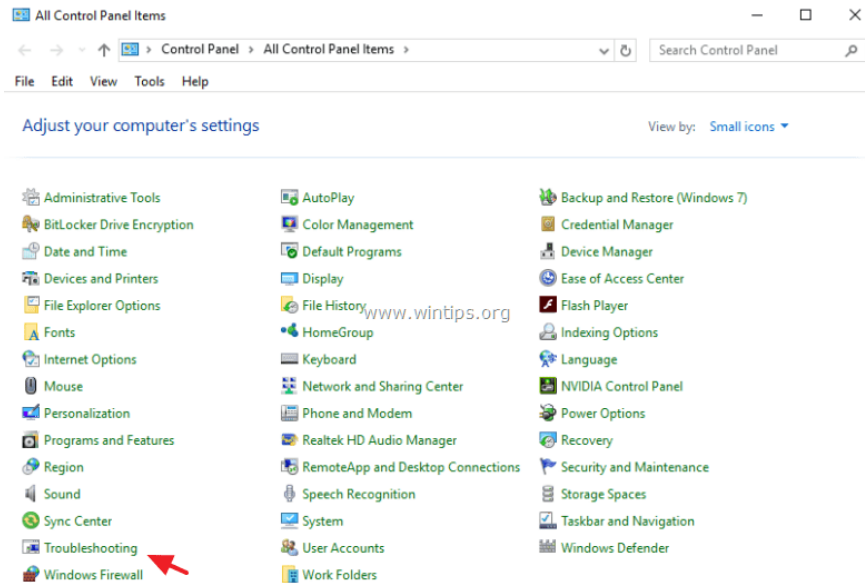
1. Right-click **the Start button** in the bottom left corner of the screen, click **Control Panel**.



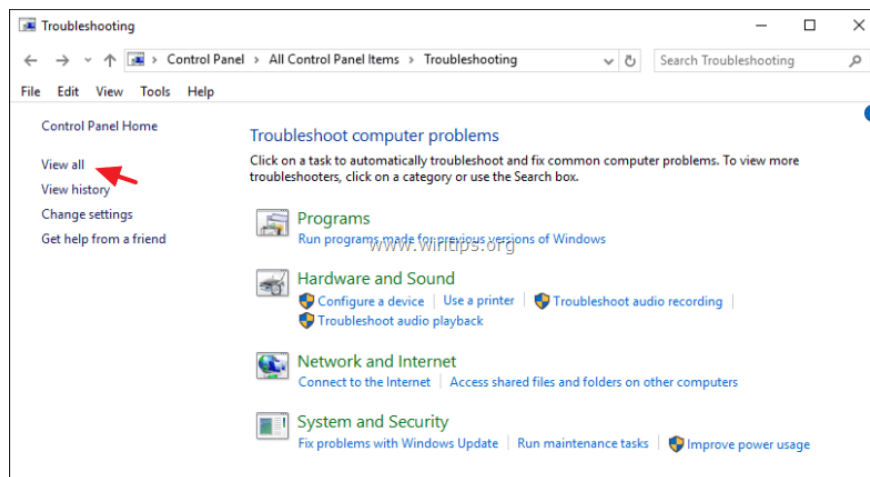
2. On the Control Panel window, set the **View by** item to **Small icons**.



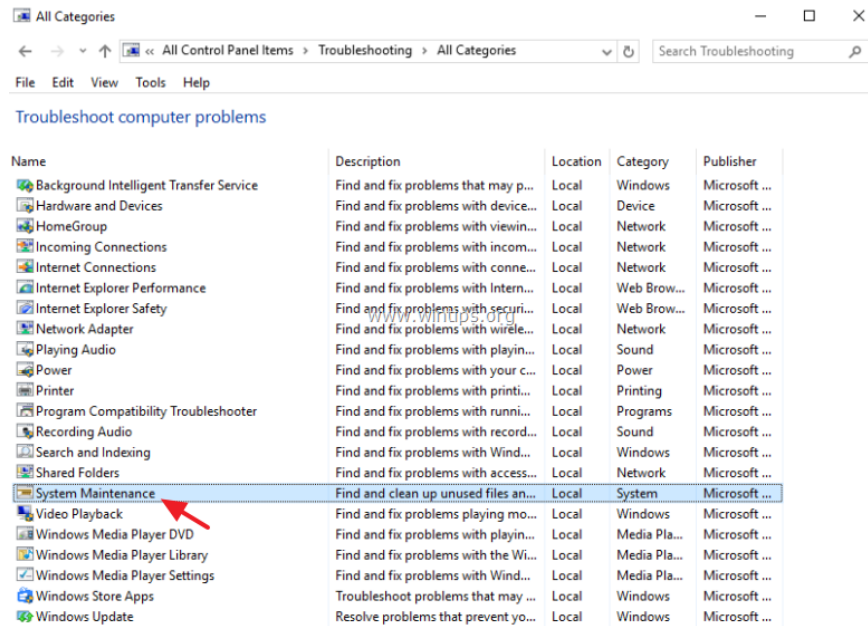
3. Next, find and click **Troubleshooting**.



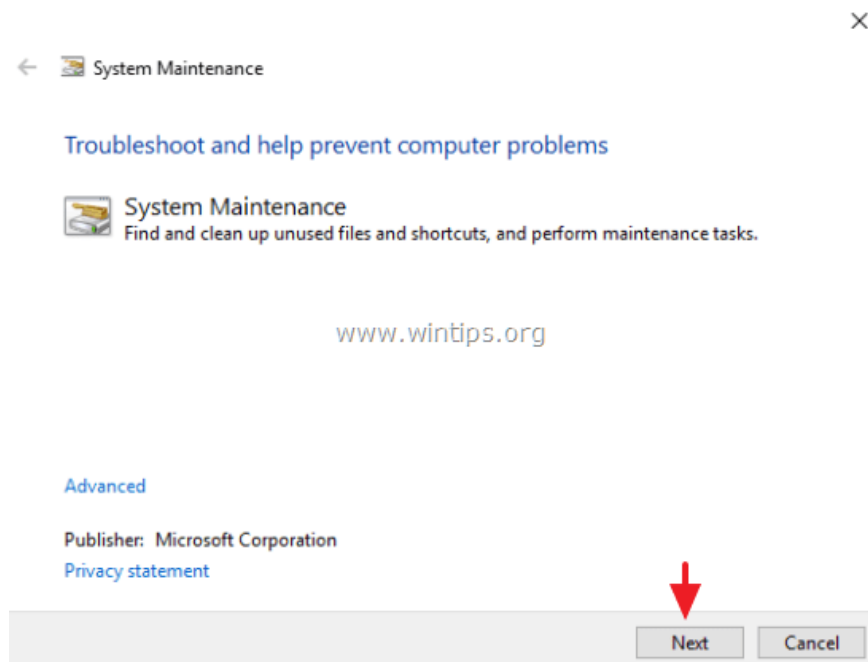
4. Click **View all**.



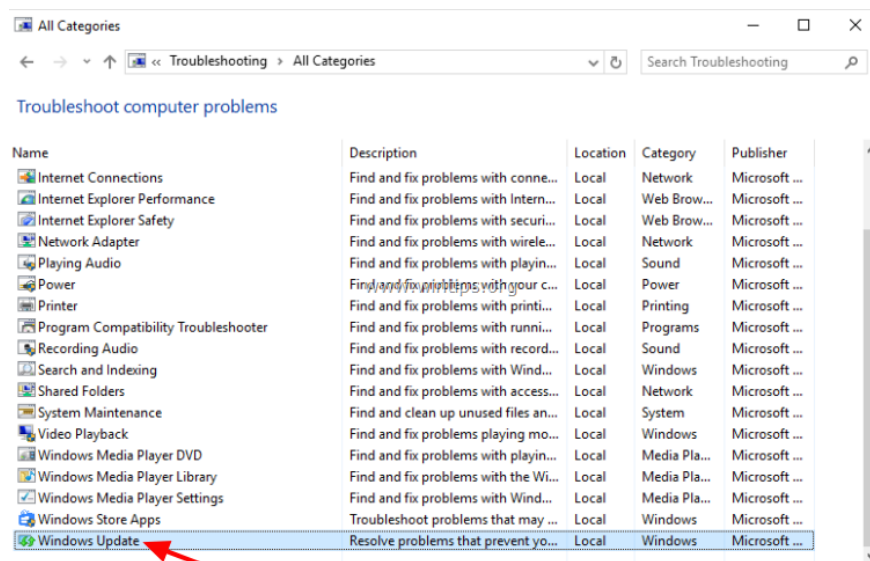
5. Double-click **System Maintenance**.



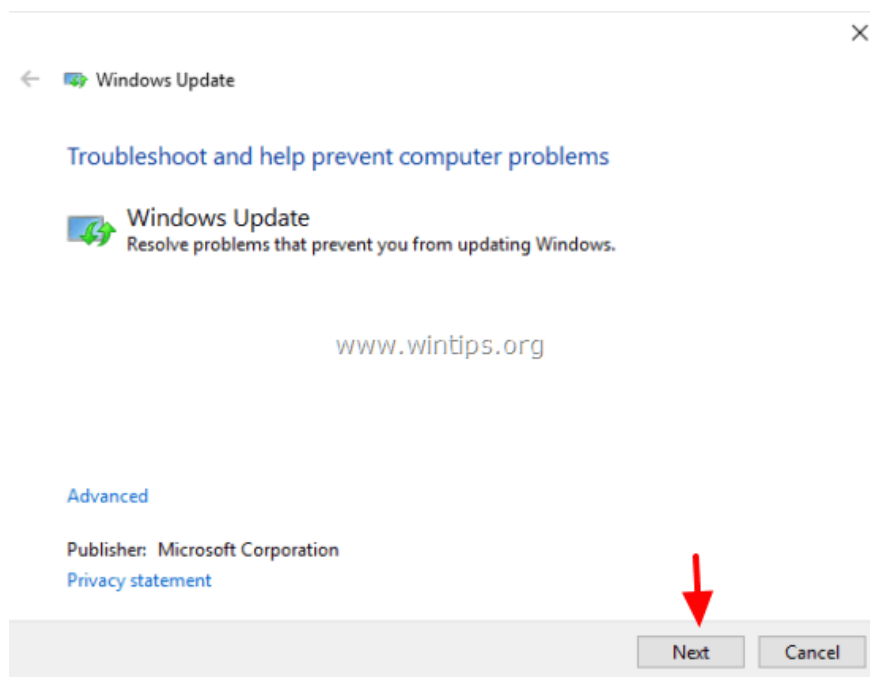
6. Click **Next** and follow the instructions on the screen to run the System Maintenance troubleshooter.



7. After System Maintenance completes the process, select **Windows Update troubleshooter** from the list.



8. Click **Next** and follow the on-screen instructions to fix the Windows Update error.



4. Delete SoftwareDistribution folder

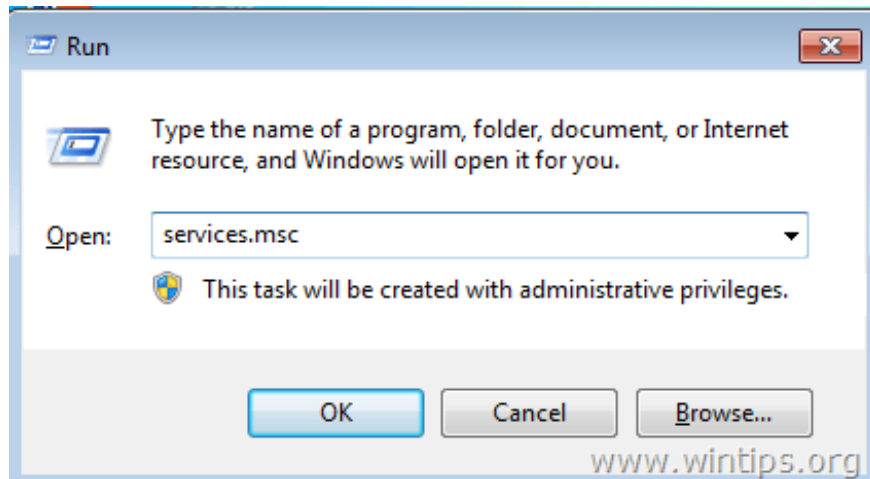
The Windows Update Store folder (also known as SoftwareDistribution folder) is where Windows stores downloaded updates. If the directory fails, it will cause problems during Windows update. Therefore, to fix the error, it is best to delete all downloaded update folders and force Windows to create a new SoftwareDistribution blank folder.

To do this thing:

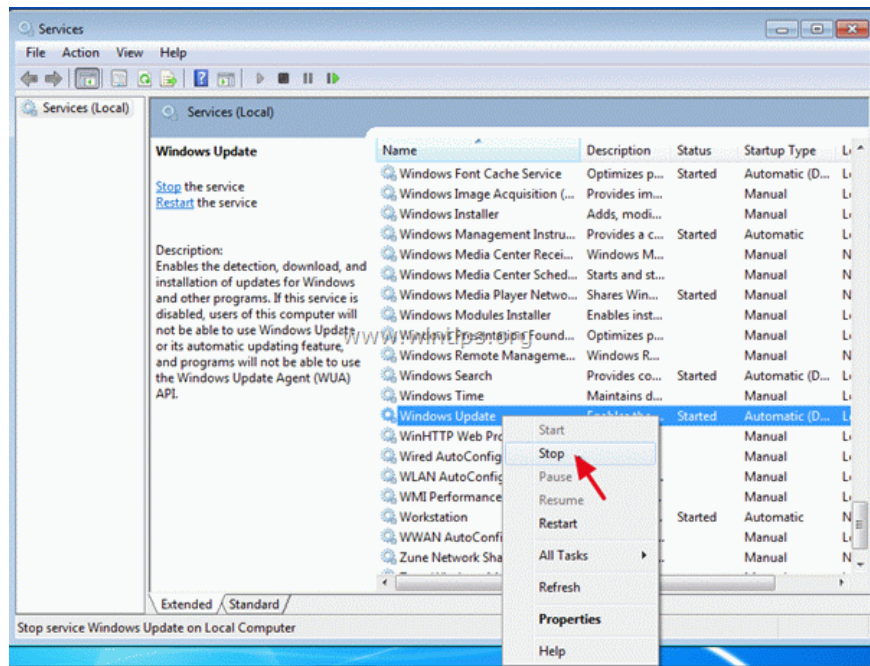
1. Press the **Windows + R** key combination to open the Run command window.

2. On the Run command window, enter the following command and press Enter to open the Services window:

services.msc

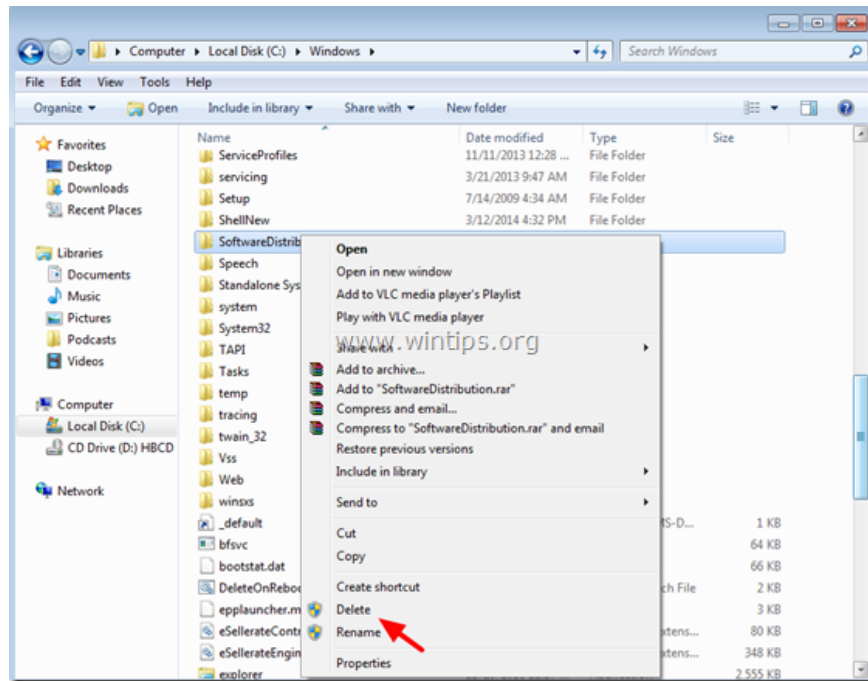


3. On the Windows Service window, find the service called **Windows Update** , right-click it and select **Stop**.



4. Next navigate to folder **C: Windows**.

5. Find and delete the SoftwareDistribution folder or can rename SoftwareDistribution folder to **SoftwareDistributionOLD**.



Note:

After booting up, next time Windows Update will check for available updates and automatically create a new SoftwareDistribution folder to store updates.

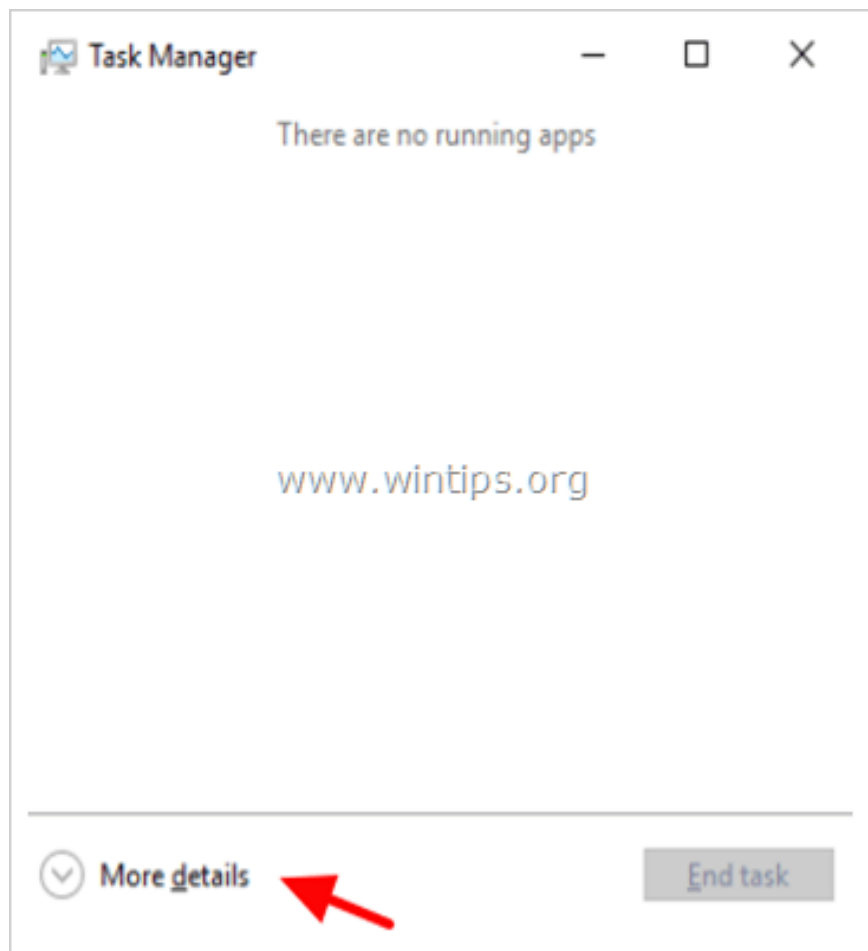
6. Restart your computer.

7. If an unusually high CPU error is caused by TiWorker.exe, you can apply other solutions below.

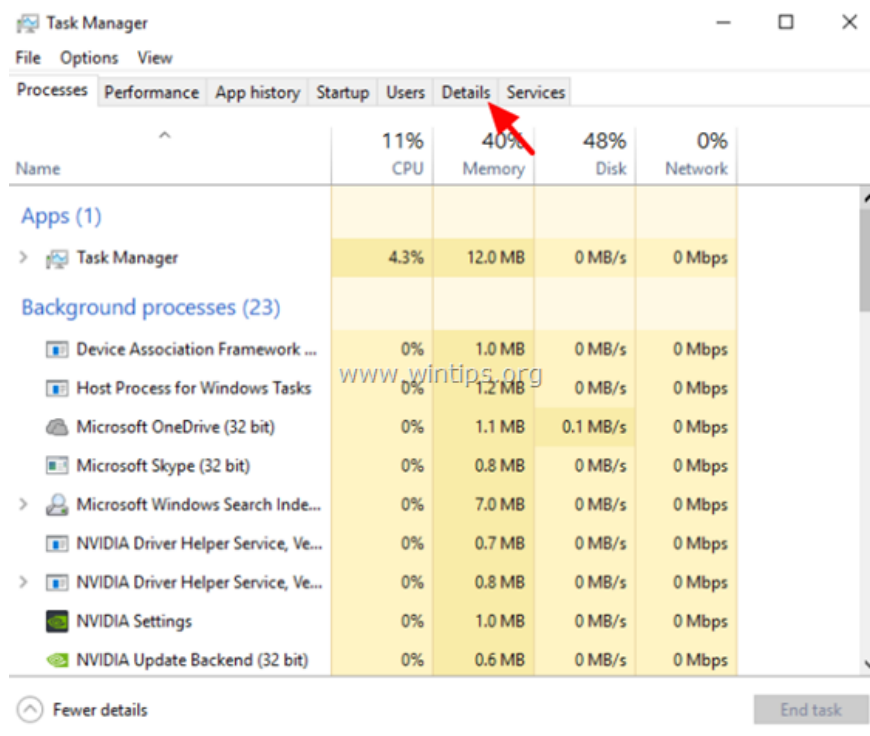
5. Reduce TiWorker process priority

1. Press **Ctrl + Shift + Esc** or right-click **the Start button** in the bottom left corner of the screen, select **Task Manager**.

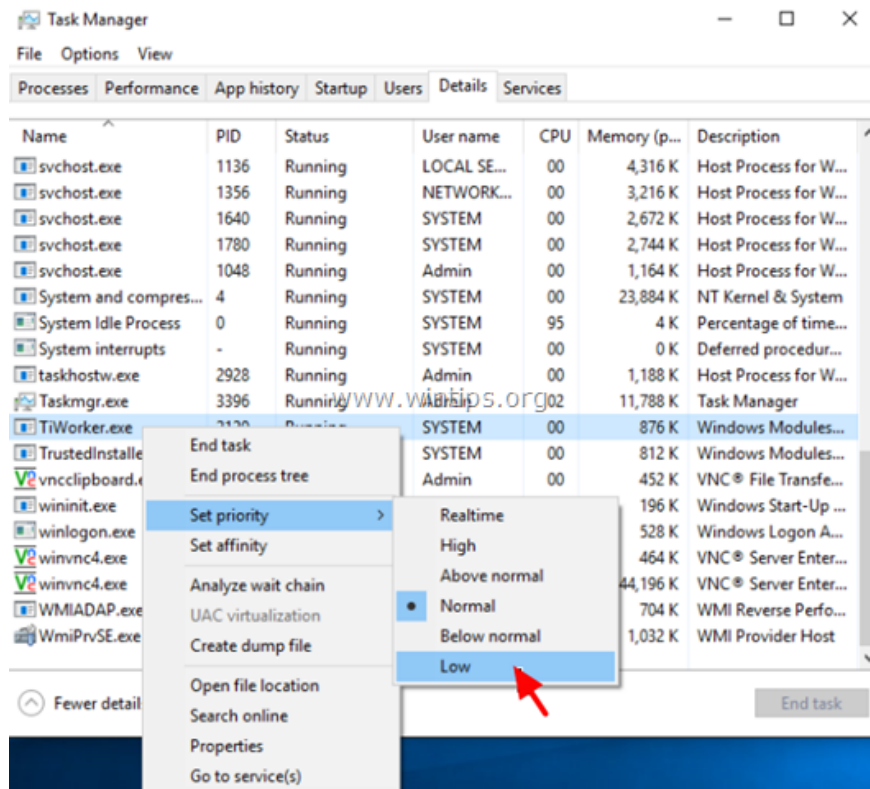
On the Task Manager window, click **More details**.



2. Next, click the **Details** tab.



3. Right-click **TiWorker.exe**, select **Set priority => Low**.



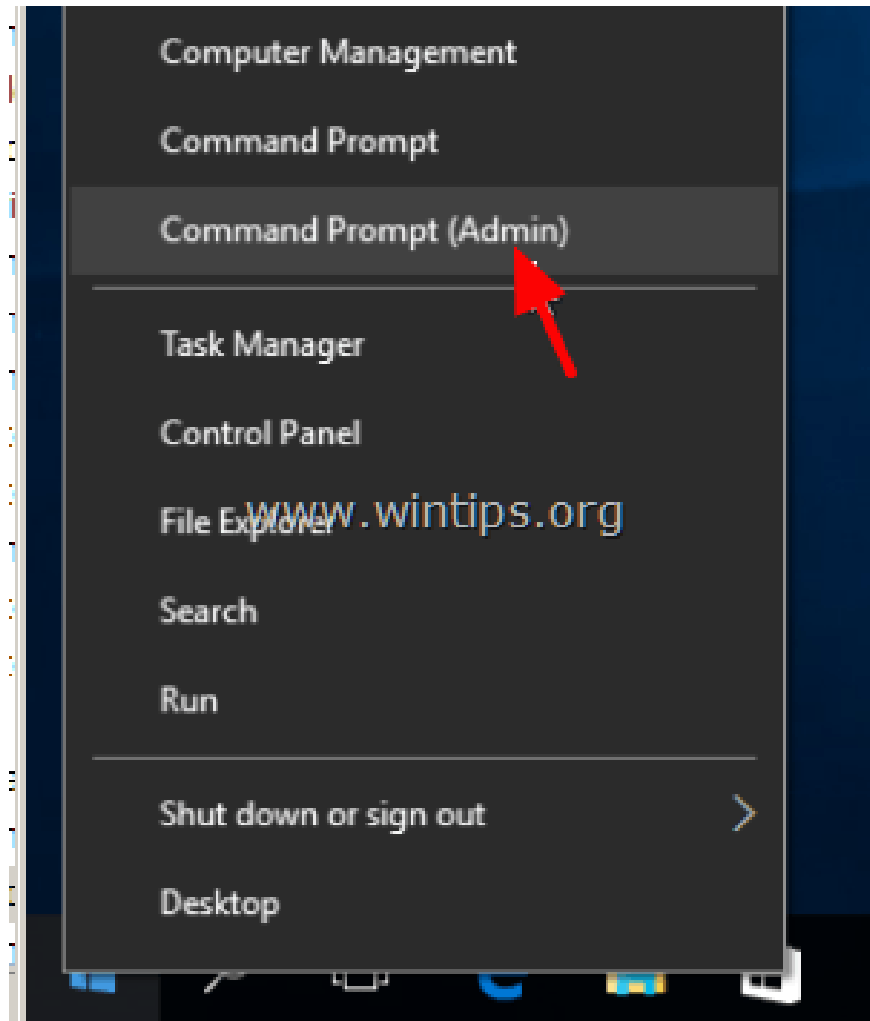
Note:

You can also select the **End process tree option** to stop the TiWorker.exe process.

6. Fix system file errors and faulty services (SFC)

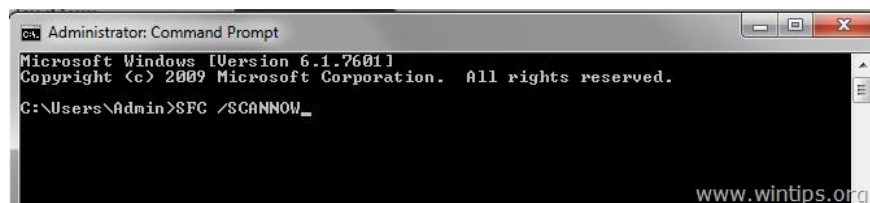
Run the System File Checker tool (SFC) to fix corrupted files and services (services) on Windows computers. To do this thing:

1. Open the Command Prompt window under Admin. To do this, right-click on **the Start button** in the bottom left corner of the screen and select **Command Prompt (Admin)** .



2. On the Command Prompt window, enter the command below and press Enter:

`SFC /SCANNOW`



3. Wait until the SFC tool checks and corrects files and services on the system.

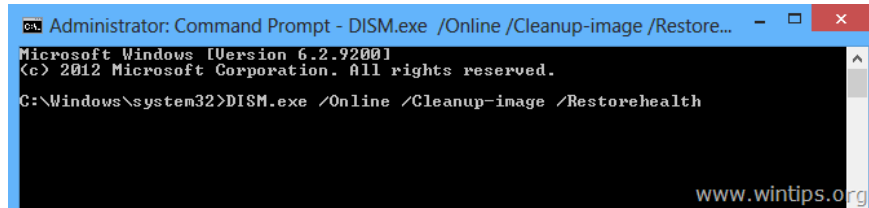
4. After completing the process, restart your computer and check if the abnormally high CPU error is caused by TiWorker.exe.

7. Fix Windows error with DISM tool (System Update Readiness Tool)

1. Right-click the Start button in the bottom left corner of the screen, select Command Prompt (Admin).

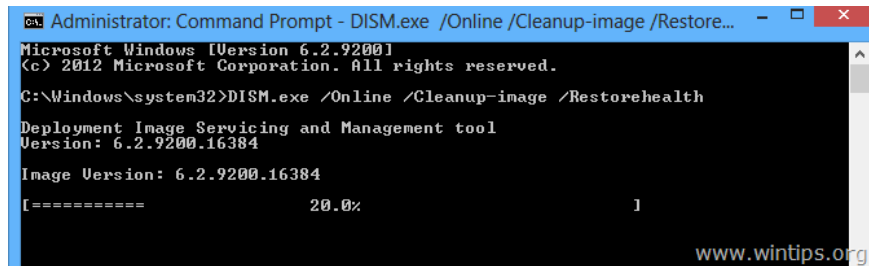
2. On the Command Prompt window, enter the following command and press Enter:

Dism.exe / Online / Cleanup-Image / Restorehealth



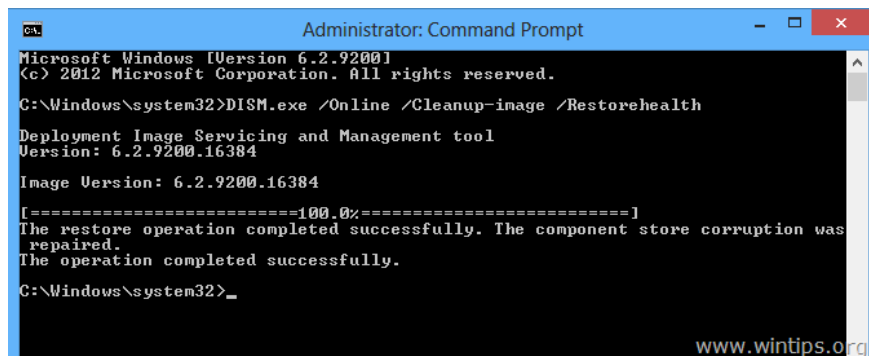
```
Administrator: Command Prompt - DISM.exe /Online /Cleanup-image /Restore...
Microsoft Windows [Version 6.2.9200]
(c) 2012 Microsoft Corporation. All rights reserved.
C:\Windows\system32>DISM.exe /Online /Cleanup-image /Restorehealth
```

3. Wait for DISM to fix the corrupted files.



```
Administrator: Command Prompt - DISM.exe /Online /Cleanup-image /Restore...
Microsoft Windows [Version 6.2.9200]
(c) 2012 Microsoft Corporation. All rights reserved.
C:\Windows\system32>DISM.exe /Online /Cleanup-image /Restorehealth
Deployment Image Servicing and Management tool
Version: 6.2.9200.16384
Image Version: 6.2.9200.16384
[=====                20.0%                ]
```

4. After the process is complete, you will receive a notification to complete the process.



```
Administrator: Command Prompt
Microsoft Windows [Version 6.2.9200]
(c) 2012 Microsoft Corporation. All rights reserved.
C:\Windows\system32>DISM.exe /Online /Cleanup-image /Restorehealth
Deployment Image Servicing and Management tool
Version: 6.2.9200.16384
Image Version: 6.2.9200.16384
[=====100.0%=====]
The restore operation completed successfully. The component store corruption was repaired.
The operation completed successfully.
C:\Windows\system32>_
```

5. Finally close the Command Prompt window and restart your computer.

Refer to some of the following articles:

1. Summary of some ways to fix Windows 10 crash, BSOD error and restart error
1. Create virtual machines with Hyper-V on Windows 8 and Windows 10
1. This is how to reset network settings on Windows 10 with just one click

Good luck!

You finished reading the article "**Unusually high CPU error correction due to TiWorker.exe on Windows 10 / 8.1 / 8**" edited by the [TipsMake](#) team. We hope this article has provided you with many useful tech tips and tricks. You can search for similar articles on tips and guides. Thank you for reading and for following us

regularly.
