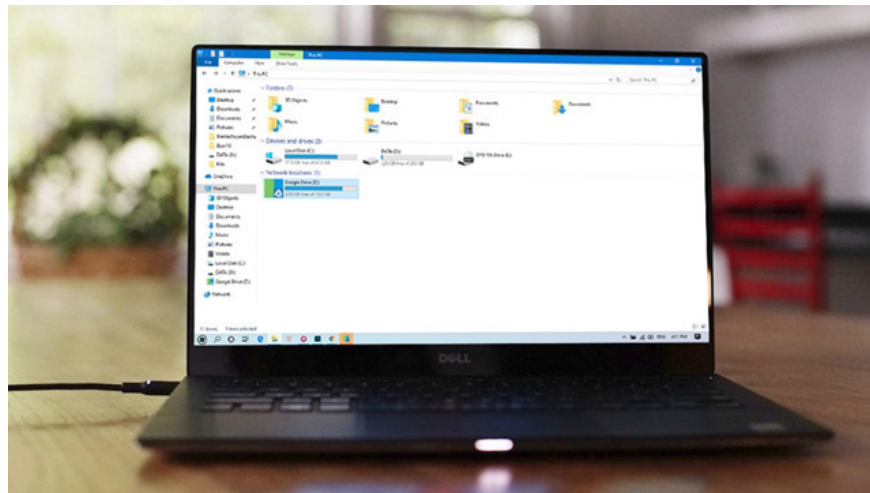


'Turn' the cloud into a drive on Windows 10 with RaiDrive

The solution helps you to access cloud data anytime on Windows 10

If you use Google Drive to store data, you'll probably access it many times a day. Each time, you have to open the browser and then proceed to access the site, which is quite time-consuming and inconvenient. This problem becomes even more problematic if you use more than 02 cloud storage services.



*Fortunately, you can bypass the above problem with the help of **RaiDrive** , the software that helps mount cloud storage services into a drive on Windows 10. In particular, RaiDrive is completely free and free of use. amount of computer storage. As follows.*

The Best Way
to handle remote files in

Google Drive, Google Shared drives,
Google Photos, OneDrive, SharePoint,
Dropbox, Box, pCloud, Yandex Disk,
WebDAV, SFTP, FTP

MEGA, AWS, Azure, GCP, NCP
JUST LAUNCHED!!!

GENK

To get started, go to this address and download the RaiDrive installation package.

OpenBoxLab
RaiDrive

Setup requires 34 MB in:
C:\Program Files\OpenBoxLab\RaiDrive\

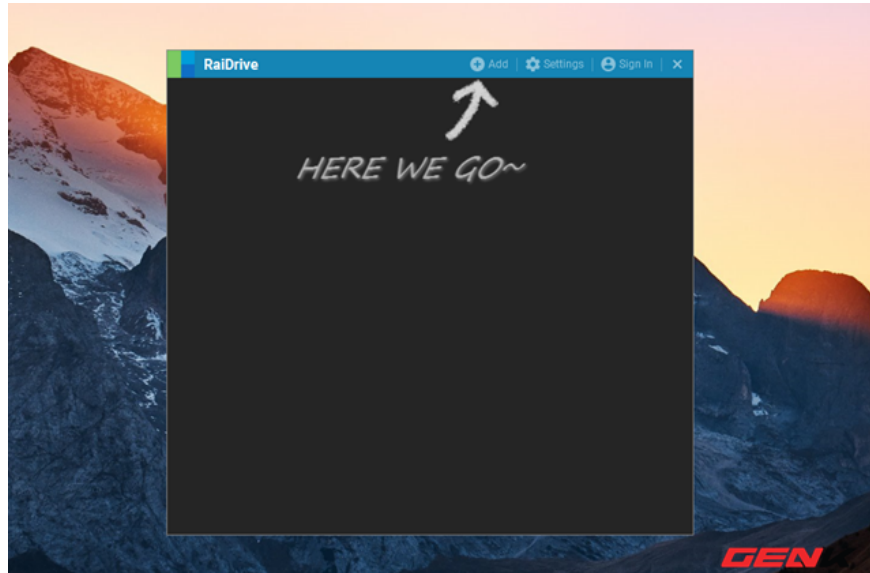
You must agree to the License terms and conditions before you can install RaiDrive.

I agree to the License terms and conditions.

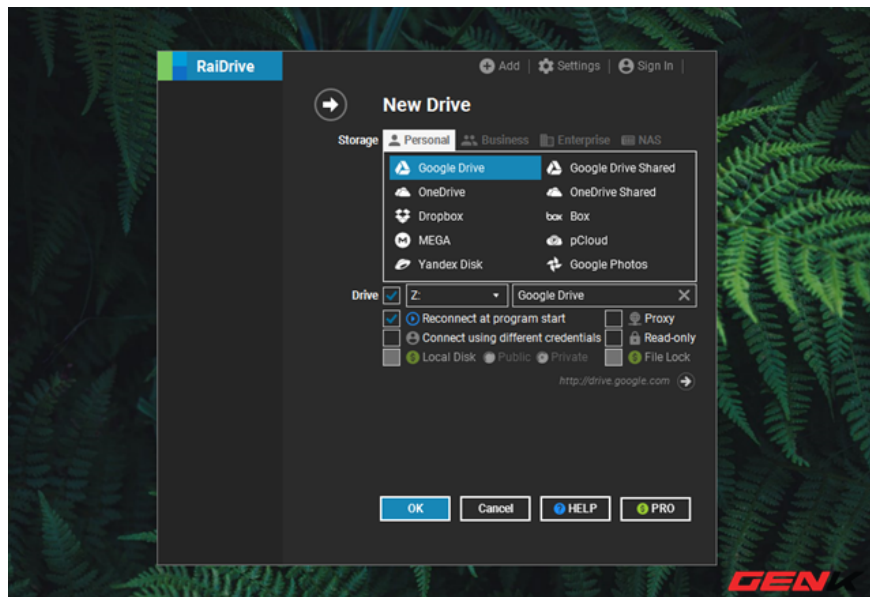
INSTALL

GENK

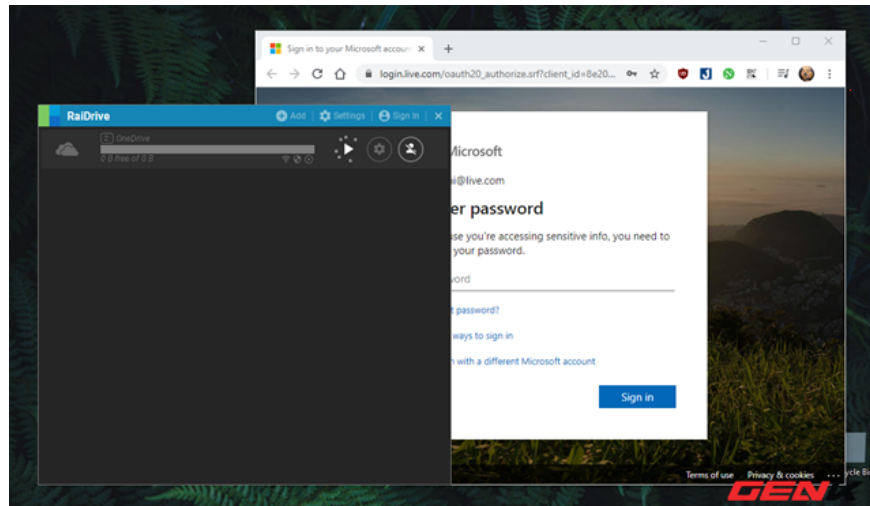
The installation of RaiDrive is quite simple, and your computer must have an internet connection for the software to download the installation data. All things automatically.



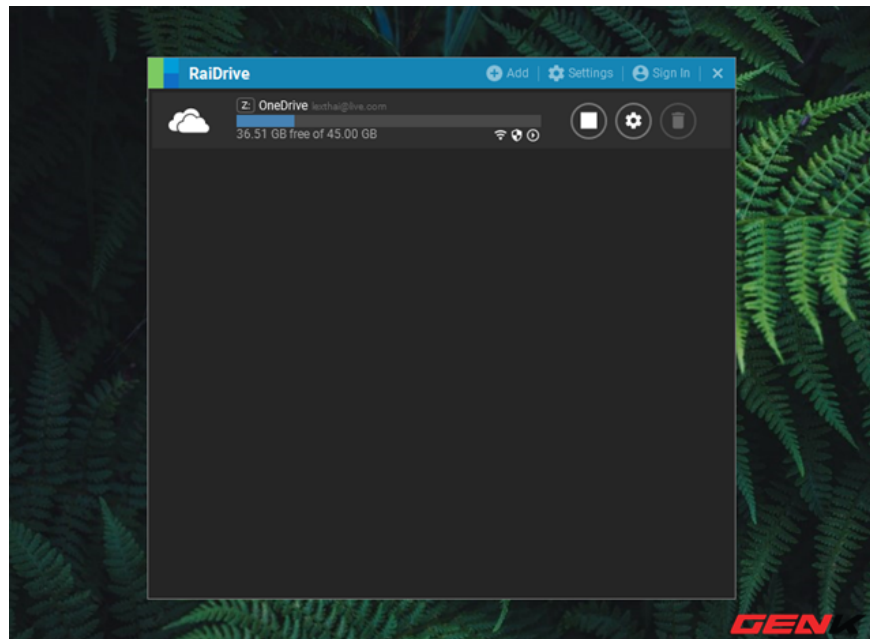
After installation is complete, launch the software and click Add to proceed to add a new drive.



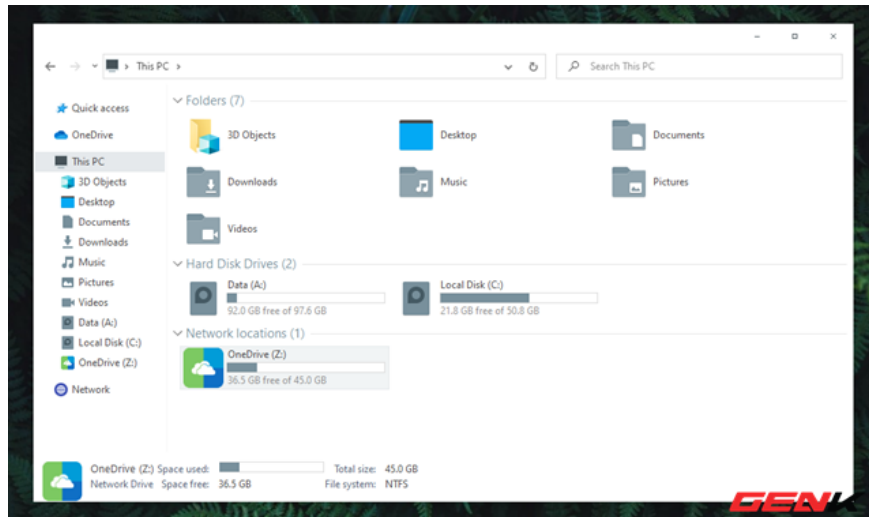
Make a selection of the cloud storage service you need and set up the name and drive letter. Then click OK to save.



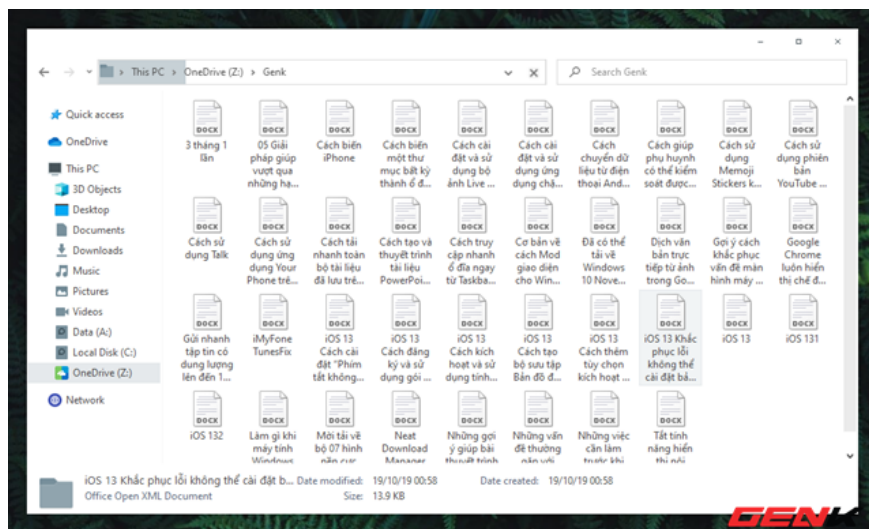
RaiDrive will launch the web browser and visit the hosting service page you choose to ask you to log in and authorize connecting RaiDrive to your cloud account.



Once the connection is complete, RaiDrive will display the drive icon of your chosen cloud service. Similarly, you can manipulate more with cloud storage services to be able to put them all together for easy management and access.



And already a drive, of course it will also appear in File Explorer's This PC.



You can easily access management and data synchronization as easily as on a real drive partition. Of course, the data in the cloud will be online so there is no disk space required. And this data is only downloaded when you use them.

Great is not it?

You finished reading the article "**'Turn' the cloud into a drive on Windows 10 with RaiDrive**" edited by the [TipsMake](#) team. We hope this article has provided you with many useful tech tips and tricks. You can search for similar articles on tips and guides. Thank you for reading and for following us regularly.