

# Turn off Windows 10 password when logging in for only 10 seconds

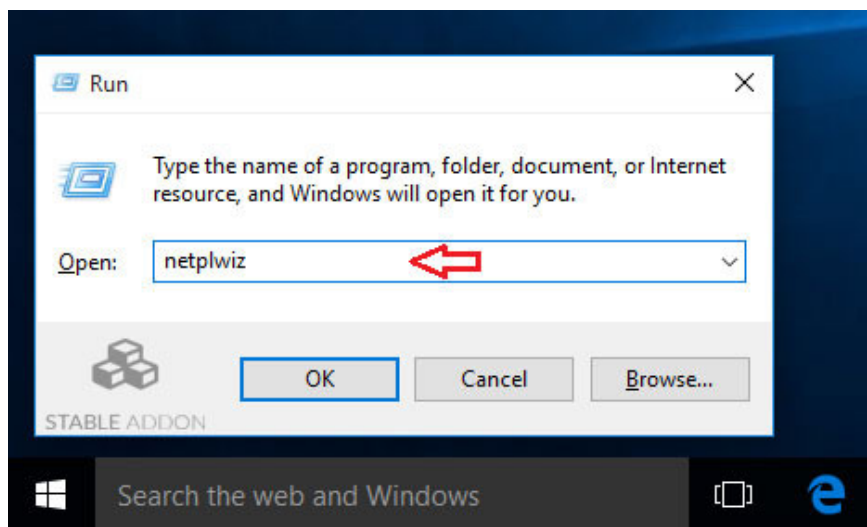
Turning off Windows 10 password will help you open your computer without entering a password, saving time when starting your computer. How to turn off Windows 10 password when logging in very quickly, please see.

**Turn off the Windows 10 password** so that every time it opens, it will automatically load the operating system, you just need to press the power button and go to make a cup of coffee, go back to everything ready to work without wasting time waiting. Enter the password, not to mention if you forgot your Windows 10 password .Of course, we recommend that you only use this feature when working in a safe environment, because turning off your computer password will reduce security, others may steal data on your computer when you absent.

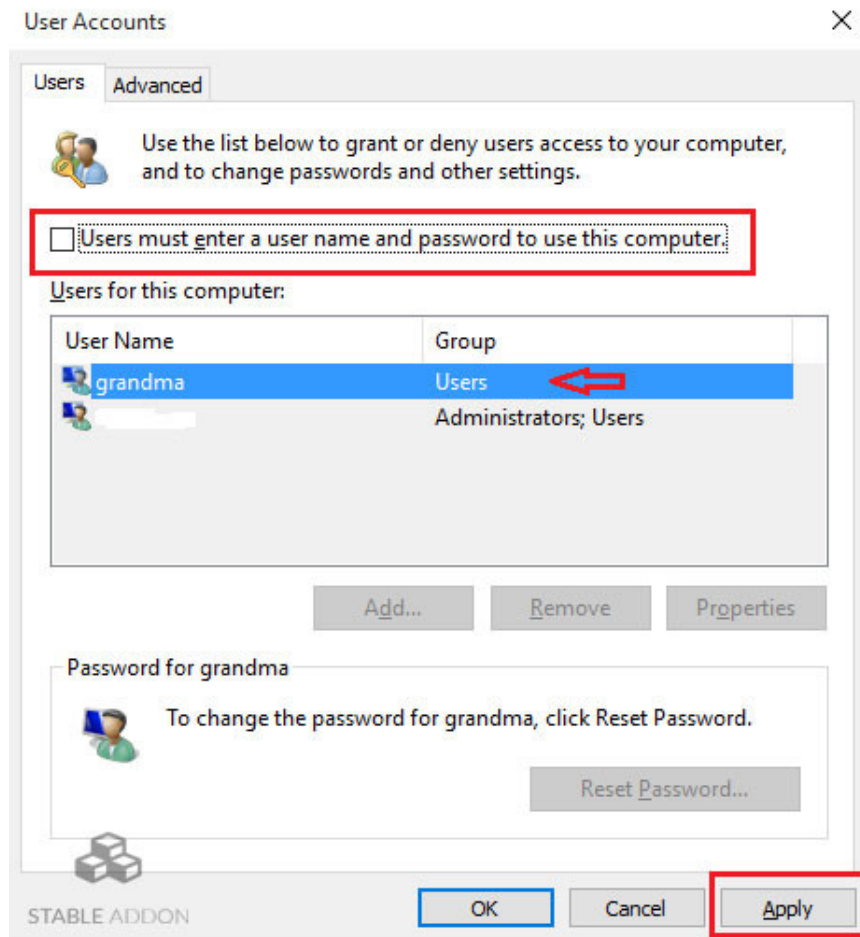
**How to turn off Windows 10 password** can also be applied in case you want to lend someone a computer. Then, create a child account or account that restricts access and disables the password entry feature for that account.

## To turn off Windows 10 password, do the following:

**Step 1:** Press the **Windows + R** key combination to open the **Run** command window. On the Run command window, enter the following command and press Enter: *netplwiz*

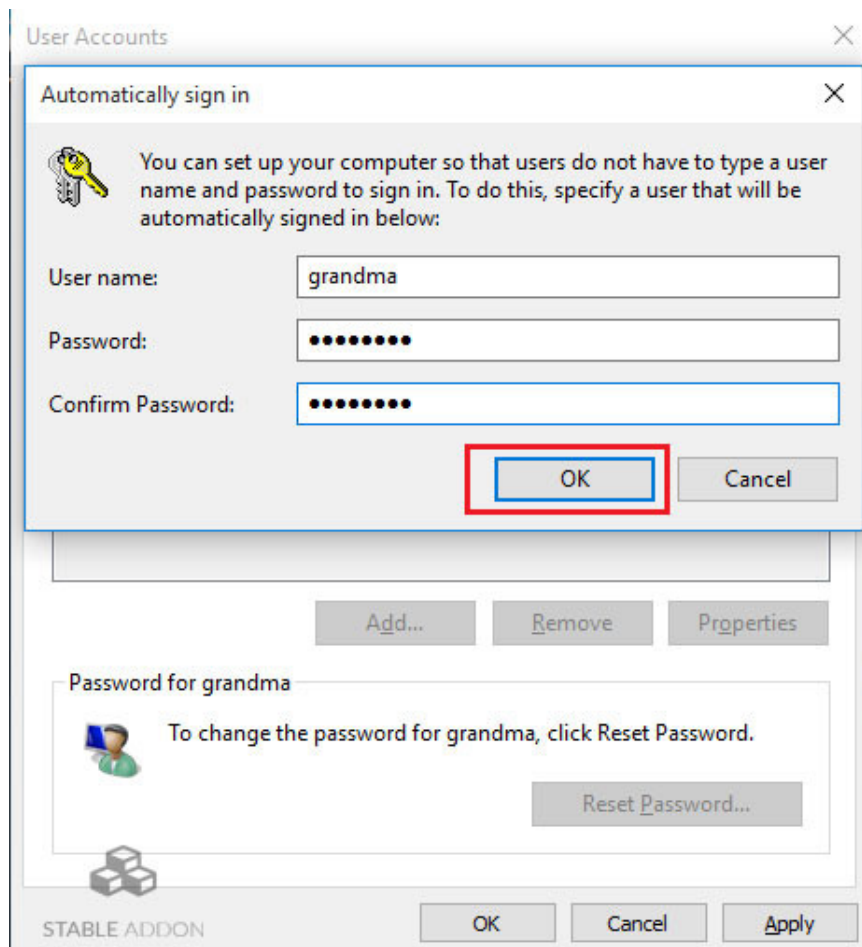


**Step 2:** At this time on the screen appears a window to configure user account settings (users). Here select the user account you want to turn off the login feature without a password. Then remove the **Users** pane, which **must enter a user name and password to use this computer** .



**Step 3:** After removing the option, click **Apply** . A new window appears on the screen, where you enter the password and confirm the user password again. If the user account you want to set up to automatically log in does not display on the list, click the Add button to add the user account you want to the list.

This is to give you a **Local** account and configure it to automatically log in to that account.



Finally enter and confirm the user password and click **OK** .

The next time you log in, the user account that you configured to automatically log in will not ask you for a password. If you want to log in after you can go to the desktop screen instead of the lock screen, you can follow the instructions to turn off the Windows 10 lock screen .

Refer to some of the following articles:

1. Instructions for changing Windows passwords without having to remember the old password
1. Instructions for setting up BIOS and UEFI passwords to protect data on your Windows 10 computer safely
1. Your computer requires entering a password after starting from Sleep mode, this is a fix

Good luck!

You finished reading the article "**Turn off Windows 10 password when logging in for only 10 seconds**" edited by the [TipsMake](#) team. We hope this article has provided you with many useful tech tips and tricks. You can search for similar articles on tips and guides. Thank you for reading and for following us regularly.