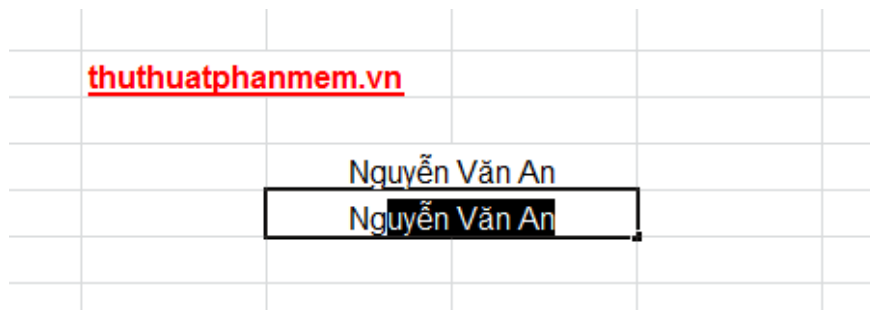


Turn off turn on the character repeat function in Excel

In Excel, when you enter content into a cell and then you enter the content below that cell with the same characters as the first character of the cell content above. The contents of the upper cell will be suggested to display in the lower box.

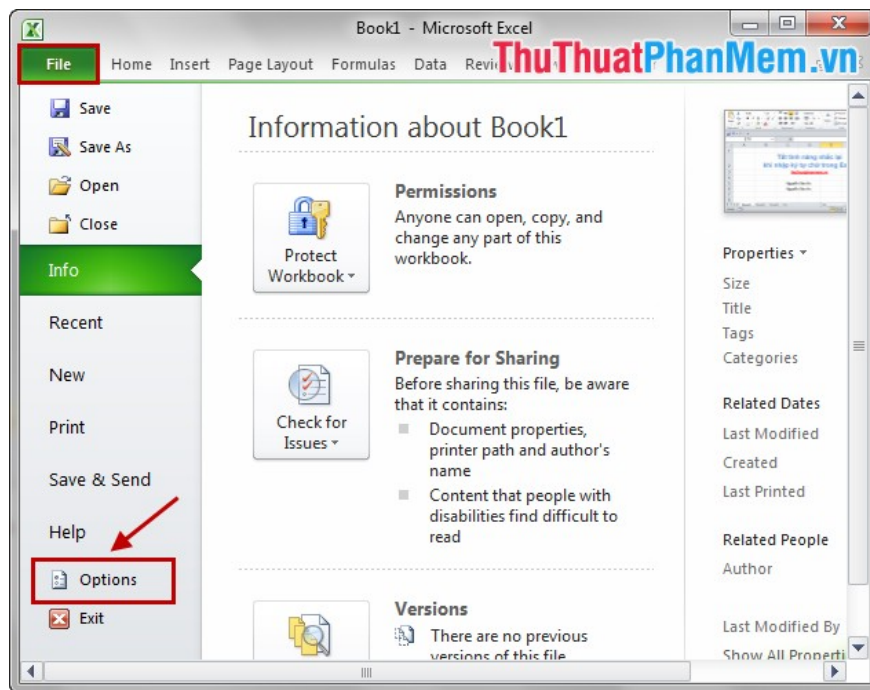
In Excel, when you enter content into a cell and then you enter the content below that cell with the same characters as the first character of the cell content above. The content of the above box will be suggested to display in the lower box, this sometimes makes you feel very annoying.

You want to turn off the repeat function but do not know how to do it?

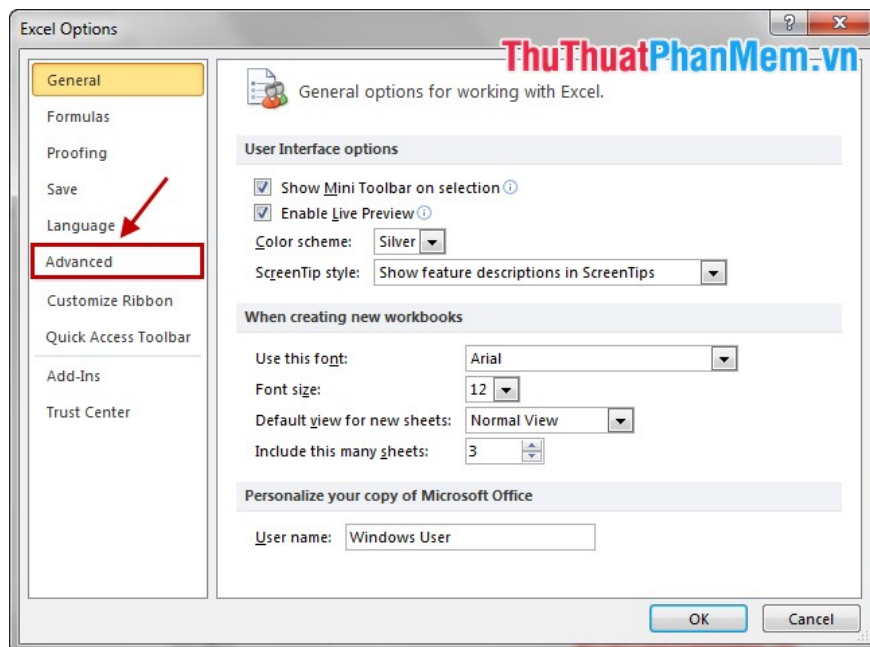


The following article will guide you how to turn off the reminder function when typing text characters in Excel.

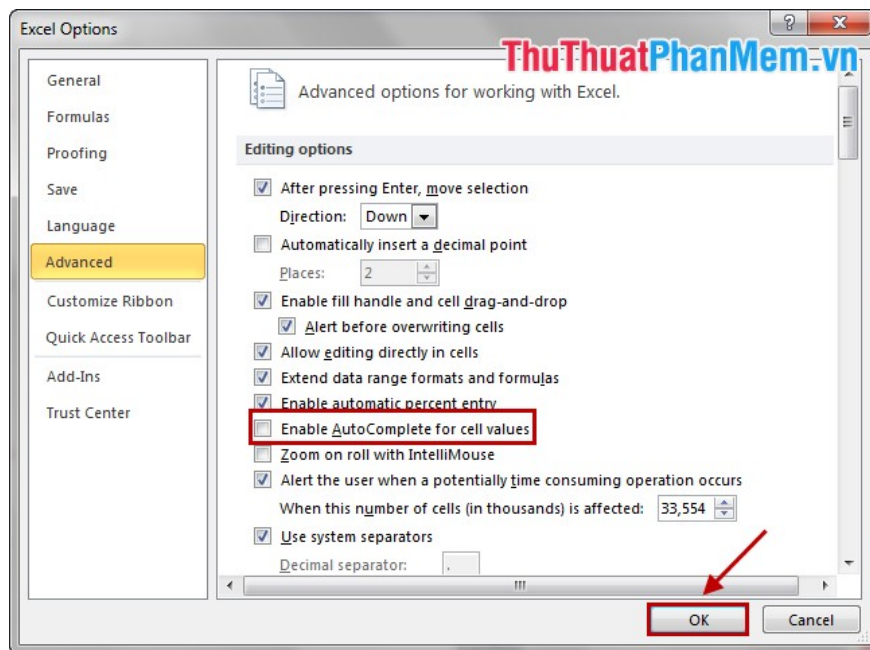
Step 1: Open the Excel file to disable, select **File -> Options** .



Step 2: In the **Excel Options** dialog box, select the **Advanced** tab .



Step 3: In the **Editing options** section, deselect the **Enable AutoComplete for cell values** box, then click **OK**



Thus, the repeat function has been turned off, to turn it back on you just need to do the same and check the box *Enable AutoComplete for cell values* .

Good luck!

You finished reading the article "**Turn off turn on the character repeat function in Excel**" edited by the [TipsMake](#) team. We hope this article has provided you with many useful tech tips and tricks. You can search for similar articles on tips and guides. Thank you for reading and for following us regularly.