

Turn Off These 8 Samsung Settings to Stop Your Phone from Draining Your Battery Quickly!

Many people think that their Samsung phone battery can no longer meet their daily needs. But after turning off these overlooked settings, the battery can easily last all day.

Many people think that their Samsung phone battery can no longer meet their daily needs. But after turning off these overlooked settings, the battery can easily last all day.

8. Always-On Display

For a while, people thought that the Always-On Display mode used almost no battery. After all, it's just a dim clock on a black background, right? But when I checked my battery usage stats, I saw that it was silently draining a few percent of battery every hour, even when I wasn't using my phone.

Always-On Display keeps part of the screen lit up—and the processor running in standby mode—to show the clock, notifications, and battery status. This is useful if you're constantly glancing at your phone when it's on your desk or somewhere else. But for many people, it's not worth the constant battery drain, so they turn it off.

If you want to do the same, open **Settings** , tap **Lock screen and AOD** , then select **Always On Display** . From here, you can turn the feature off.

Settings



Wallpaper and style

Wallpapers · Colour palette



Themes

Themes · Wallpapers · Icons



Home screen

Layout · App icon badges



Lock screen and AOD

Screen lock and biometrics · Always On Display



Security and privacy

Auto Blocker · Permission usage



Location

Location requests



Safety and emergency

Medical info · Wireless emergency alerts



Accounts and backup

Manage accounts · Smart Switch



Google

Google services

< Lock screen and AOD



Screen lock and biometrics

[PIN, Face, Fingerprints](#)

Extend Unlock

Secure lock settings

Always On Display



Now bar

Touch and hold to edit



Roaming clock



Contact information

Show unlock transition effect



About Lock screen

Looking for something else?

1:38

5G 36

< Always On Display

On



1:38

Wed 9 July

Show Lock screen wallpaper



Show Now bar



When to show

[Tap to show](#)

About Always On Display

Looking for something else?

7. RAM Plus

To disable RAM Plus, open **Settings** , scroll down to **Device care** , then tap **Memory** . Here, you'll see RAM Plus at the bottom. Tap it and you can turn it off completely or reduce its size.

Settings



Advanced features

Labs • S Pen • Side button



Digital Wellbeing and parental controls

Screen time • App timers



Device care

Storage • Memory • App protection



Apps

Default apps • App settings



General management

Language and keyboard • Date and time



Accessibility

Vision • Hearing • Dexterity



Software update

Download and install



Tips and user guide

Useful tips • New features



About phone

Status • Legal information • Phone name

< Device care



Great!

Your care report has been updated. See what Device care has done to keep your phone in good condition.

Battery

13 h 4 m left



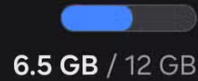
Storage

419.2 GB available



Memory

4.4 GB available



App protection

No threats found



Performance

Performance profile

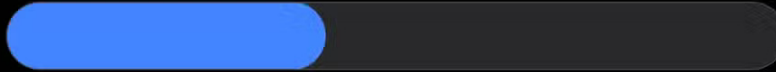
Light

< Memory

5.8 GB available




5.1 GB/12 GB used

Reserved: 1.1 GB



Free up memory by stopping background apps.

Clean now (+514 MB)

-  Samsung capture 242 MB
-  Samsung account 65.1 MB
-  Samsung Internet 37.9 MB

View more

Memory resident apps

Excluded apps

RAM Plus

8 GB

< RAM Plus

On



RAM Plus uses your phone's storage space to provide virtual memory. Choose more virtual memory to allow more apps to stay open in the background. Choose less virtual memory to keep more storage space free.

 2 GB 4 GB 6 GB 8 GB

Turning off RAM Plus won't delete any data, and you probably won't notice a difference in everyday use. However, it can reduce background load on your device and help save a little more battery each day, especially if you don't need the extra virtual RAM.

6. Nearby Device Scanning

If you want to save battery, turn this feature off. In the **Settings** menu , tap **Connections** , then **More connection settings** . **From there, you'll see the Nearby device scanning** option . Turn this off and your phone will stop scanning for nearby devices unless you explicitly open those menus.

Settings



Digvijay kumar

Samsung account



Connections

Wi-Fi • Bluetooth • SIM manager



Connected devices

Quick Share • Samsung DeX • Android Auto



Galaxy AI

Writing assist • Note assist • Photo assist



Modes and Routines

Modes • Routines



Sounds and vibration

Sound mode • Ringtone

< Connections



Ultra-wideband (UWB)

Identify the precise location of nearby devices.



Flight mode



SIM manager

Mobile networks

Data usage

Mobile Hotspot and Tethering

More connection settings

Looking for something else?

[Samsung Cloud](#)

[Link to Windows](#)

[Android Auto](#)

[Quick Share](#)

< More connection settings

Nearby device scanning



Printing

VPN

None

Private DNS

Automatic

Ethernet

Auto update system configurations

Allow automatic network configuration changes. Even when this is off, configuration may be auto updated for safety, security, or to ensure functionality.



5. Wake up Bixby with your voice

You can turn Bixby off if you never use it. Additionally, turning off voice wake-up can save battery life without losing the assistant entirely. You can still access Bixby by opening the app manually or pressing the side button whenever you need it.

To turn it off, open **Settings** , scroll down to **Advanced features** , then tap **Bixby** . Next, select **Voice registration** and turn off **Voice wake-up** .

Settings



Location

Location requests



Safety and emergency

Medical info • Wireless emergency alerts



Accounts and backup

Manage accounts • Smart Switch



Google

Google services



Advanced features

Labs • S Pen • Side button



Digital Wellbeing and parental controls

Screen time • App timers



Device care

Storage • Memory • App protection



Apps

Default apps • App settings



General management

Language and keyboard • Date and time

< Advanced features



Bixby

Labs

S Pen

Side button

Multi window

Motions and gestures

One-handed mode



Screenshots and screen recordings

Video effects



Video brightness

Bright

Super HDR

Automatically adjust the display to show the



Try recommended feature

Go to Offline processing



Samsung account
digkr0002@gmail.com

Voice registration

Wake-up phrase settings • Improve voice recognition accuracy

Language and voice style

Sound feedback

Play a sound when Bixby starts and stops listening.



Use while locked



Advanced features

Offline processing

< Voice registration

Voice wake-up

- Hi, Bixby
- Bixby
- Off

Delete all voice recordings

4. Keep screen on while viewing (Smart Stay)

Samsung's Smart Stay feature will keep the Always-On Display on as long as it detects that you're looking at the screen. At first, this sounds great because it prevents the screen from turning off while you're reading or watching something, without having to constantly tap the screen to keep it on.

However, to do this, your phone's front-facing camera scans your eyes, which uses up extra battery. And if your screen timeout is set to a long value (like 5 minutes), Smart Stay can keep your screen on for even longer.

To turn this feature off, go to **Settings** and tap **Display** . Then, navigate to **Screen timeout** and look for the option labeled **Keep screen on while viewing** . Turn this off to prevent your phone from constantly using the camera to track your face.

Settings



Connections

Wi-Fi • Bluetooth • SIM manager



Connected devices

Quick Share • Samsung DeX • Android Auto



Galaxy AI

Writing assist • Note assist • Photo assist



Modes and Routines

Modes • Routines



Sounds and vibration

Sound mode • Ringtone



Notifications

Status bar • Do not disturb



Display

Brightness • Eye comfort shield • Navigation bar



Battery

Power saving • Charging



Wallpaper and style

Wallpapers • Colour palette

< **Display**



Font size and style

Screen zoom

Screen resolution
QHD+ (3120 x 1440)

Camera cutout

Screen timeout
30 seconds

Easy mode

Edge panels

Navigation bar
Manage the Home, Back, and Recents buttons or use gestures for more screen space.

Accidental touch protection
Protect your phone from accidental touches when it's in a dark place, such as a pocket or bag.

< Screen timeout

15 seconds

30 seconds

1 minute

2 minutes

5 minutes

10 minutes

Keep screen on while viewing

Keep the screen on while you're looking at it, using the front camera to detect your face.



3. Lift to Wake

Lift to Wake automatically turns on the screen when you pick up your phone. It's convenient because you don't have to press any buttons to see the time or notifications.

If you don't need this feature, you can turn it off. Open the **Settings** menu , tap **Advanced features** , then **Motions and gestures** . Here, you'll see the **Lift to wake** option . Turn this off and the screen will only turn on when you press the power button or double-tap the screen (if this option is enabled).

Settings



Accounts and backup

Manage accounts • Smart Switch



Google

Google services



Advanced features

Labs • S Pen • Side button



Digital Wellbeing and parental controls

Screen time • App timers



Device care

Storage • Memory • App protection



Apps

Default apps • App settings



General management

Language and keyboard • Date and time



Accessibility

Vision • Hearing • Dexterity

< **Advanced features**



Bixby

Labs

S Pen

Side button

Multi window

Motions and gestures

One-handed mode



Screenshots and screen recordings

Video effects



Video brightness

Bright

Super HDR

Automatically adjust the display to show the



< Motions and gestures

Lift to wake

Turn on the screen when you pick up your phone.



Double tap to turn on screen

Turn on the screen when you double tap it.



Double tap to turn off screen

Double tap an empty space on the Home or Lock screen.



Alert when phone picked up

Your phone will vibrate when you pick it up after missing a call.



Mute with gestures

Mute incoming calls and alarms by putting your hand over the screen or turning your phone face down.



Palm swipe to capture

Swipe the edge of your hand across the screen to take a screenshot.



Looking for something else?

[Keep screen on while viewing](#)

2. Dynamic Lock Screen

To turn this feature off, open **Settings** , tap **Wallpaper and style** , then select **Change wallpapers** . Scroll down to **Wallpaper services** and select **None** . This will prevent your phone from downloading new images in the background.

Settings



Modes and Routines

Modes • Routines



Sounds and vibration

Sound mode • Ringtone



Notifications

Status bar • Do not disturb



Display

Brightness • Eye comfort shield • Navigation bar



Battery

Power saving • Charging



Wallpaper and style

Wallpapers • Colour palette



Themes

Themes • Wallpapers • Icons



Home screen

Layout • App icon badges



Lock screen and AOD

Screen lock and biometrics • Always On Display

Wallpaper and style



Change wallpapers

Colour palette

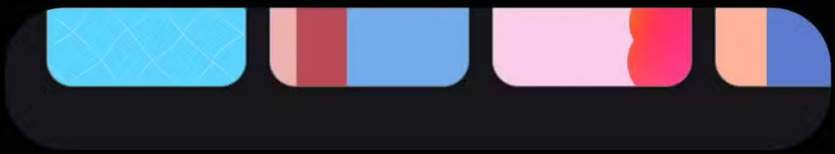
Choose a palette based on colours from your wallpaper.



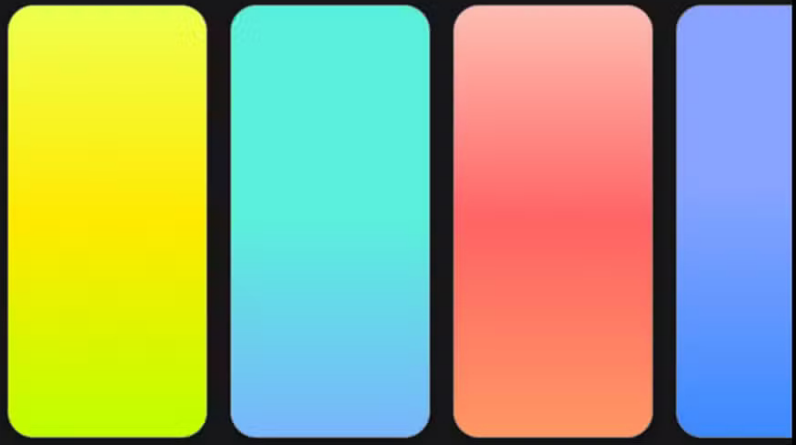
Dim wallpaper when Dark mode is on



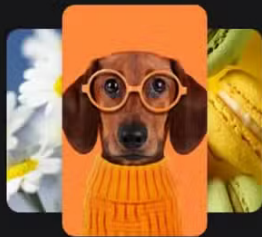
< Wallpapers



Colours >



Wallpaper services >



Dynamic Lock screen

Get more wallpapers

< Wallpaper services



Get new Lock screen wallpapers automatically and see something different each time.

Dynamic Lock screen ⚙️

None

Instead, switch to a single, static lock screen wallpaper. Your phone will still look great, and now you know it's not using extra battery or data to refresh an image you only glance at every second.

1. Limit data and background activity

Of all the tweaks you can make, this one has the biggest impact on battery life. Many apps run data and work in the background, syncing and updating even when you're not using them. For apps like email, messaging, or maps, this is necessary. But for random shopping or news apps, it's a battery hog.

To manage this, go to **Settings** , select **Apps** , and review each app individually. Under **Battery** , change their background activity settings to **Restricted** whenever possible to prevent them from running unnecessarily. (Note that this may cause notifications and other app activities to stop working properly.)

7:23

5G   16

Settings



Advanced features

Labs • S Pen • Side button



Digital Wellbeing and parental controls

Screen time • App timers



Device care

Storage • Memory • App protection



Apps

Default apps • App settings



General management

Language and keyboard • Date and time



Accessibility

Vision • Hearing • Dexterity



Software update

Download and install



Tips and user guide

Useful tips • New features



About phone

Status • Legal information • Phone name

7:24

5G 16

< App info



Amazon

Installed

Privacy

Notifications

Allowed

Permissions

Notifications, Phone and SMS

Screen time

Manage app if unused

Remove permissions if app is unused



Defaults

Set as default

In this app

Usage

Mobile data

2.77 GB used since 1 May

Battery

2% used since last fully charged



Open



Archive



Uninstall



Force stop

< Battery



Amazon

Version 30.12.4.300

Unrestricted



Allow this app to use battery in the background without restrictions. This may reduce your battery life.

Optimised



Optimise based on your usage of this app. Recommended for most apps.

Restricted



Restrict battery usage while this app is running in the background. The app may not work as expected and notifications may be delayed.



Open



Uninstall



Force stop

For background data, open **Settings** , go to **Connections** , then select **Data usage** and select **Mobile data usage** . From there, select the apps you don't need and turn off the **Allow background data usage** option so they don't use data when you're not using them.

Settings



Digvijay kumar

Samsung account



Connections

Wi-Fi • Bluetooth • SIM manager



Connected devices

Quick Share • Samsung DeX • Android Auto



Galaxy AI

Writing assist • Note assist • Photo assist



Modes and Routines

Modes • Routines



Sounds and vibration

Sound mode • Ringtone

< Connections



Wi-Fi
DIRECT-1654210207

Wi-Fi Calling

Bluetooth

NFC and contactless payments

Ultra-wideband (UWB)
Identify the precise location of nearby devices.

Flight mode

SIM manager

Mobile networks

Data usage

Mobile Hotspot and Tethering

More connection settings

< Data usage

6.96 GB of mobile data

eSIM 1

1 Jul - 31 Jul



0 B

6.96 GB

2.00 GB data warning

Data saver

Off

Allowed networks for apps

Mobile

Mobile data

Access the internet through your mobile network.



Mobile data usage

6.96 GB used 1-31 Jul

Billing cycle and data warning

1st day of each month

Wi-Fi

Wi-Fi data usage

38.92 GB used 11 Jun - 9 Jul

You finished reading the article "**Turn Off These 8 Samsung Settings to Stop Your Phone from Draining Your Battery Quickly!**" edited by the [TipsMake](#) team. We hope this article has provided you with many useful tech tips and tricks. You can search for similar articles on tips and guides. Thank you for reading and for following us regularly.
