

Turn off Indexing Service to let the computer run faster

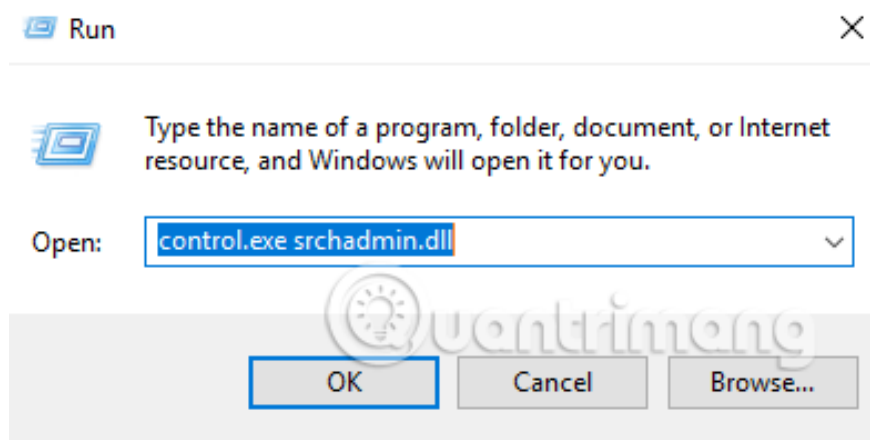
Indexing Service is a feature that helps NTFS hard disk partitions find and access files faster, but basically this feature can be said to be useless.

Indexing Service is a feature that helps NTFS hard disk partitions find and access files faster, but basically this feature can be said to be useless. If you are a computer user, you can quickly find and access the files on your hard drive. Therefore, shutting down this feature is a simple way to improve the efficiency of the system because Windows keeps 'losing power' when it comes to doing a useless job. In addition, if you do not want to turn off this feature, the article will guide you how to customize, add folders to search results in Windows 10 better.

1. Small tips to improve Windows Search Indexing
2. Search files faster than Windows Explorer with this Command Prompt command
3. Search more easily with tagged files in Windows

1. Open Indexing Options in Windows 10

Press **Windows + R** key combination, then enter **control.exe srchadmin.dll** command and click OK.



By default, Windows uses the index when searching to produce search results as quickly as possible because it only searches for the selected location. You can filter this location by file extension, properties, file contents you want to index.

3,589 items indexed



Indexing complete.

Index these locations:

Included Locations	Exclude
<input type="checkbox"/> DesktopBackground	
<input type="checkbox"/> hình nen gai	
<input type="checkbox"/> Start Menu	
<input type="checkbox"/> Users	AppData; AppData
<input type="checkbox"/> Windows 10	

Modify

Advanced

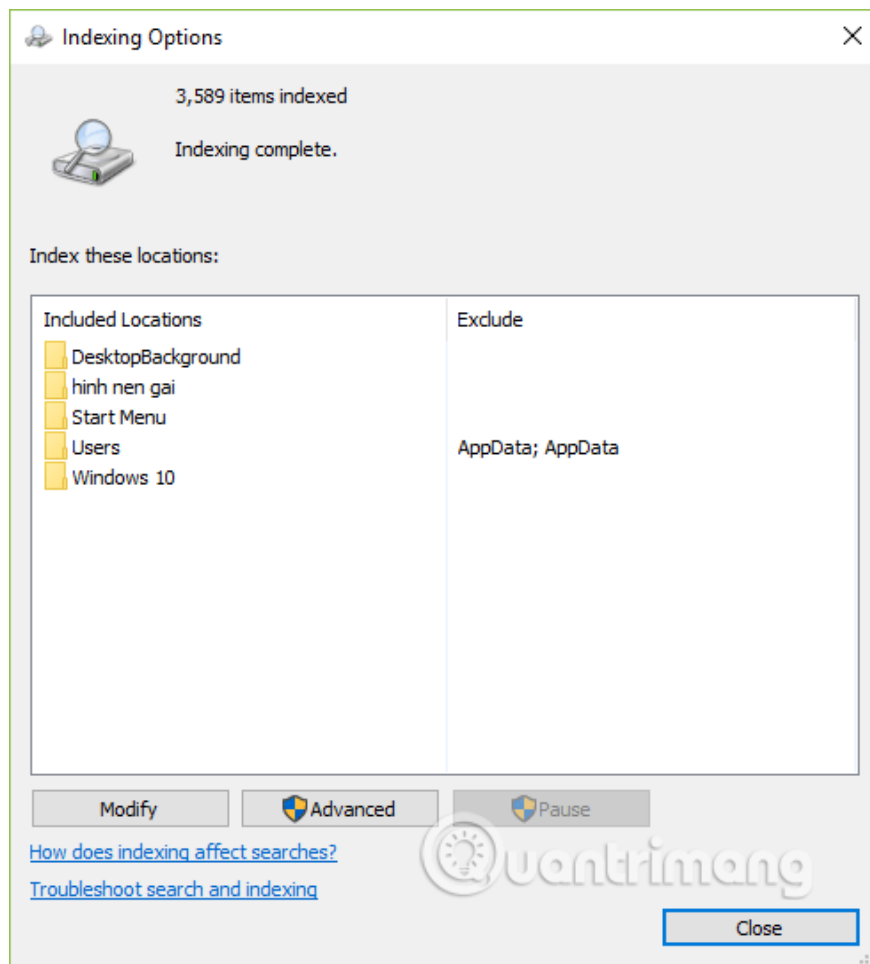
Pause

[How does indexing affect searches?](#)

[Troubleshoot search and indexing](#)

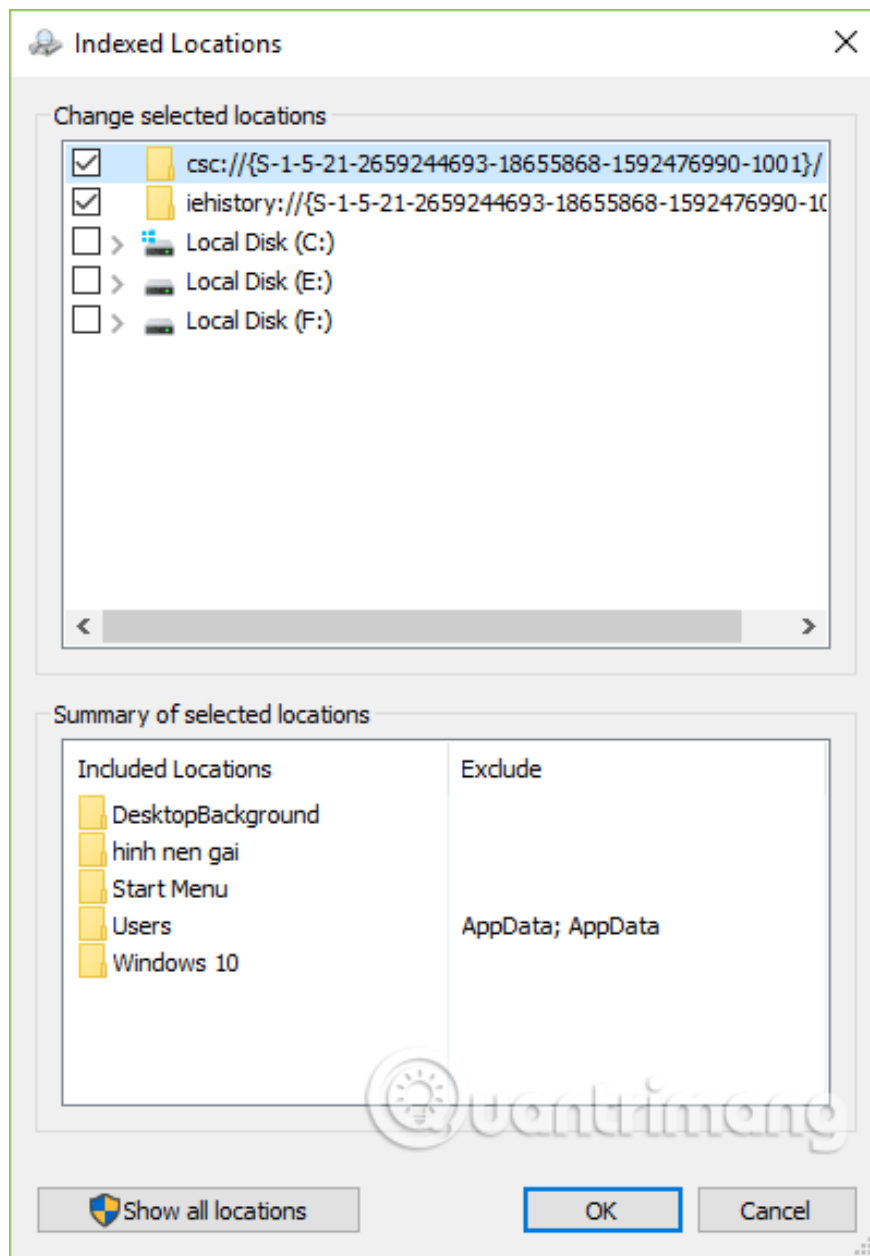


Close



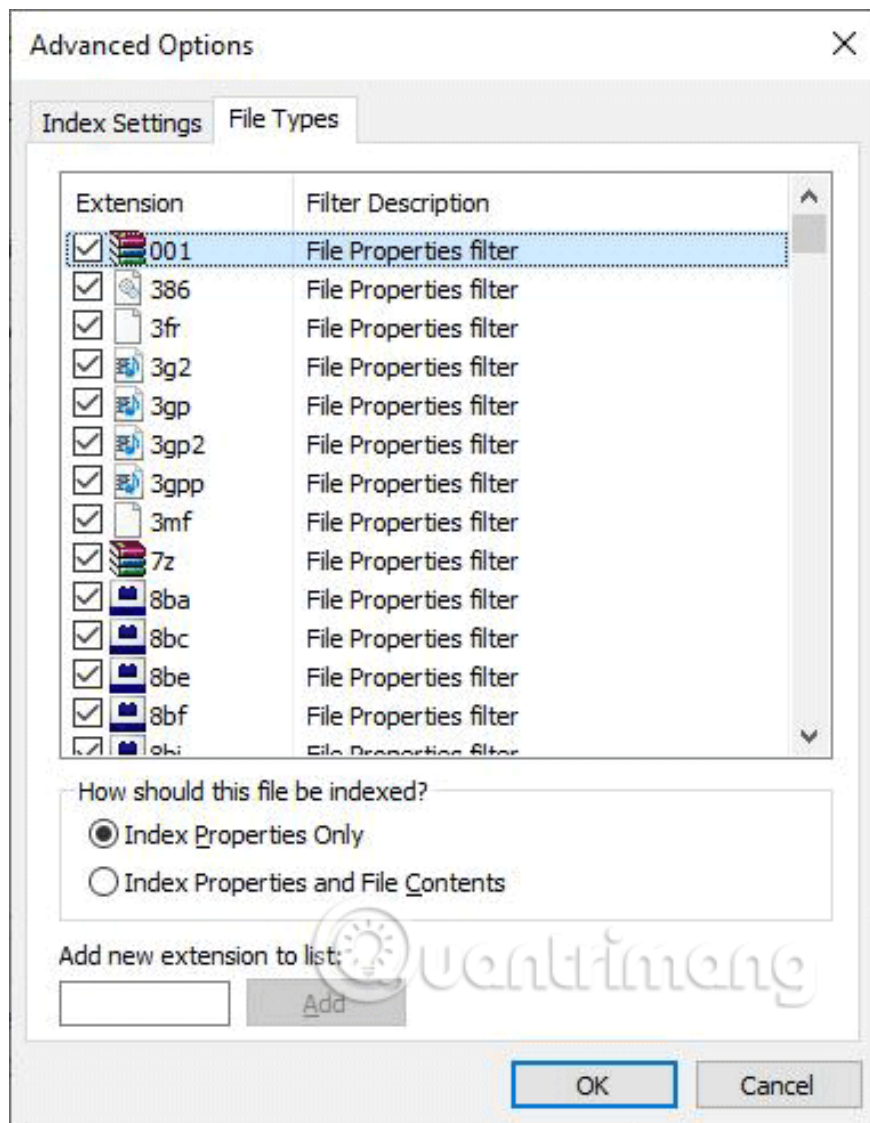
2. Add or delete the Search indexing folder

In Index Options, click **Modify** and check the folder you want to index or deselect to remove the search folder.



3. Add file type to Search Indexing

You must log in as an admin to add or remove file types to the index. In, **Indexing Options** , click on **Advanced** and select the file extension you want to add to the index by checking the box. Select **Index Only Properties** or **Properties and File Contents** is how to index the file extension.



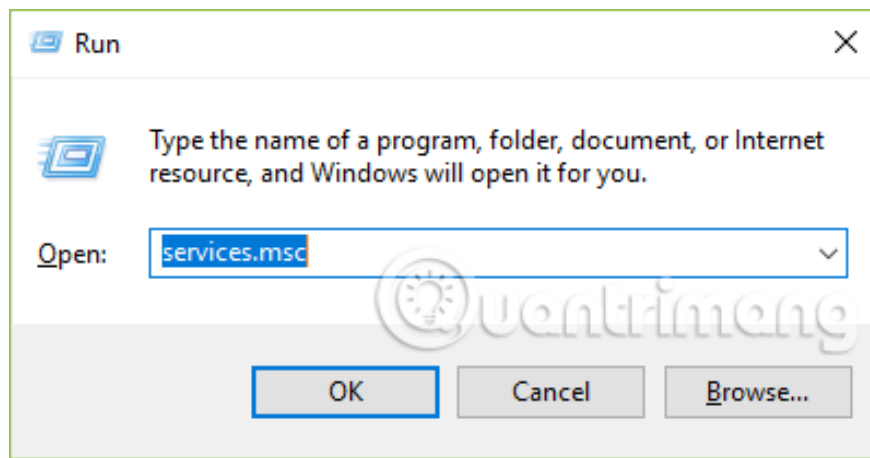
Index Properties Only : The metadata tags for this file are in the index. For example, file name, change data, author, etc. It is the information you can see when right-clicking on the file and clicking **Properties** , tab **Details** .

Index Properties and File Contents : Just like Index Only properties it contains information about file and file contents. For example, the entire text in a text file. However, not all file types contain text.

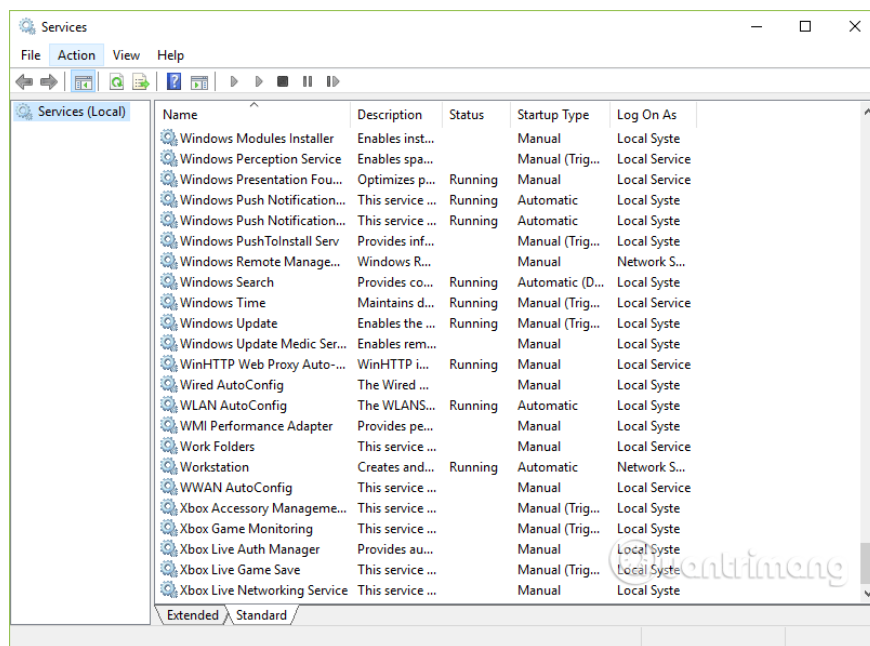
4. Turn off Search Indexing Service on Windows 10

The index uses the Windows Search service and runs the Searchindexer.exe process in the background. It automatically recreates and updates to change the selected position when the last index recreates to improve search results. By default, index speed decreases due to user activity. When the computer is inactive, the index speed reaches the maximum to search faster.

To turn off Search Indexing Service in Windows 10, press the **Windows + R** key combination and enter the command **services.msc** , then press **Enter** or the **OK** button.



In the new window that appears, double-click **Windows Search** to open the Search Indexing Service setting.



On the **General** tab, select **Disabled** from the **Startup** type drop-down menu and then select **Stop** to stop the current search service.

Windows Search Properties (Local Computer)



General Log On Recovery Dependencies

Service name: WSearch

Display name: Windows Search

Description: Provides content indexing, property caching, and search results for files, e-mail, and other content.

Path to executable: C:\WINDOWS\system32\SearchIndexer.exe /Embedding

Startup type: Automatic (Delayed Start) (dropdown menu with options: Automatic (Delayed Start), Automatic, Manual, Disabled)

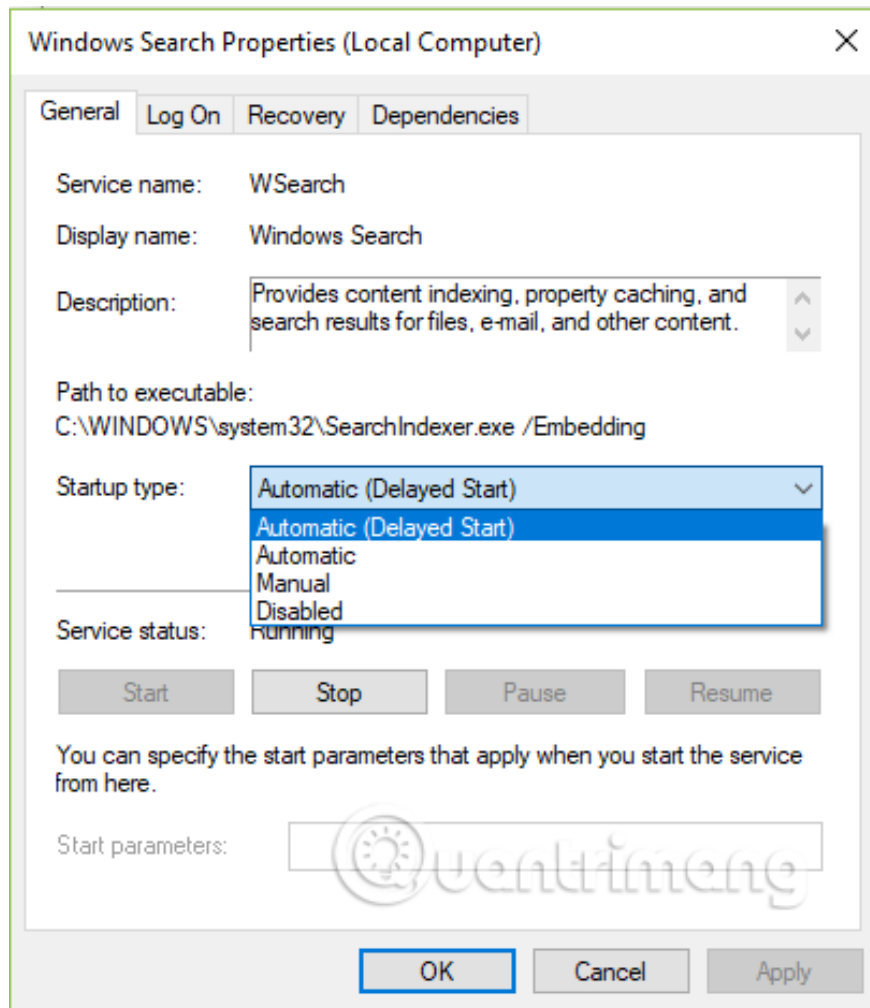
Service status: Running

Start Stop Pause Resume

You can specify the start parameters that apply when you start the service from here.

Start parameters:

OK Cancel Apply



Then click the **Apply** button to apply changes to the Windows search service.

I wish you all success!

You finished reading the article "**Turn off Indexing Service to let the computer run faster**" edited by the [TipsMake](#) team. We hope this article has provided you with many useful tech tips and tricks. You can search for similar articles on tips and guides. Thank you for reading and for following us regularly.