

Troubleshooting connection issues in Outlook, preventing emails from being sent or received.

If you're experiencing connection errors to the Exchange server in Outlook, simply restarting the software should resolve the issue. However, sometimes it's not that simple; if the connection is faulty, you may need to troubleshoot the connection problem in Outlook before you can continue using it.

To use all of Outlook's services, users need to register an Outlook account. To register for Outlook , simply go to the Microsoft developer website. Currently, the Outlook email service is constantly growing to compete with Gmail, Yahoo Mail, Hotmail, etc. When using Outlook, sometimes connection errors to the Exchange server cause users to lose connection. If restarting Outlook doesn't resolve the issue, you need to follow the steps below to troubleshoot connection problems in Outlook.

Fix connection issues in Outlook

Download Outlook 2016 here: Download **Outlook 2016**

Download Outlook 2013 here: Download **Outlook 2013**

Download Outlook 2019 here: Download **Outlook 2010**

Download Outlook 2007 here: Download **Outlook 2007**

1. Turn Outlook ON.

Sometimes, for some reason, users accidentally switch Outlook to Work Offline mode. This prevents you from connecting to the server and sending or receiving emails through the application.

To turn off Offline mode, click the **Send/Receive** tab . Then click **Work Offline** to return to Online mode.



2. Repair the data file.

File format errors (.pst and .ost) in Outlook can sometimes cause connection problems.

To fix this connection issue in Outlook, you need to close Outlook. Open **the Control Panel** .

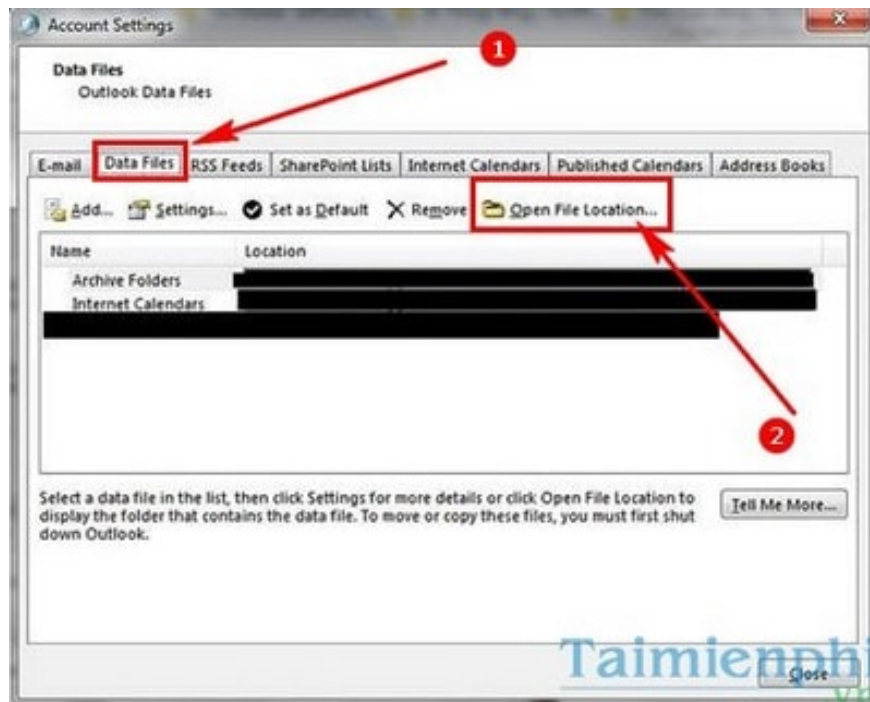
Find the Mail icon .

In the newly opened dialog box, select **Data Files** . Select the data file by clicking **Open File Location**.

If the file has the extension **.ost** , please convert it to **.OLD** format .

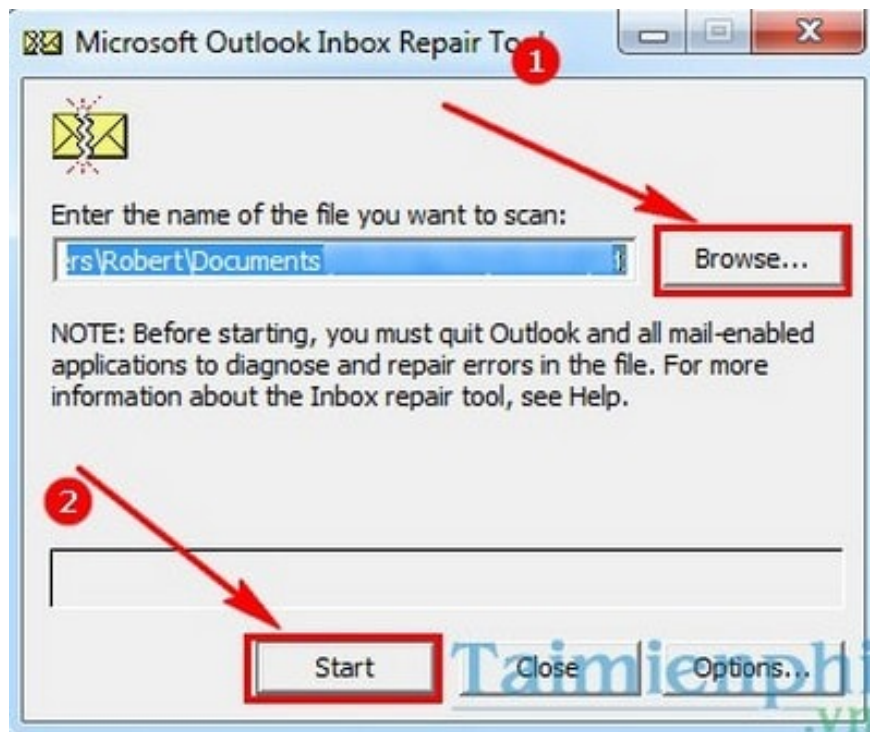
If the file has the .pst extension, you don't need to change anything.

Close the window and reopen Outlook.



Note: To display the file extension (whether it's **.ost** or **.pst**), you need to open the settings in **Windows Explorer**.

Find the **scampst.exe** file . After the dialog box opens, click **Browse** to locate the **.pst** file and click the **Start** button . Finally, click **Repair** to fix the corrupted file.



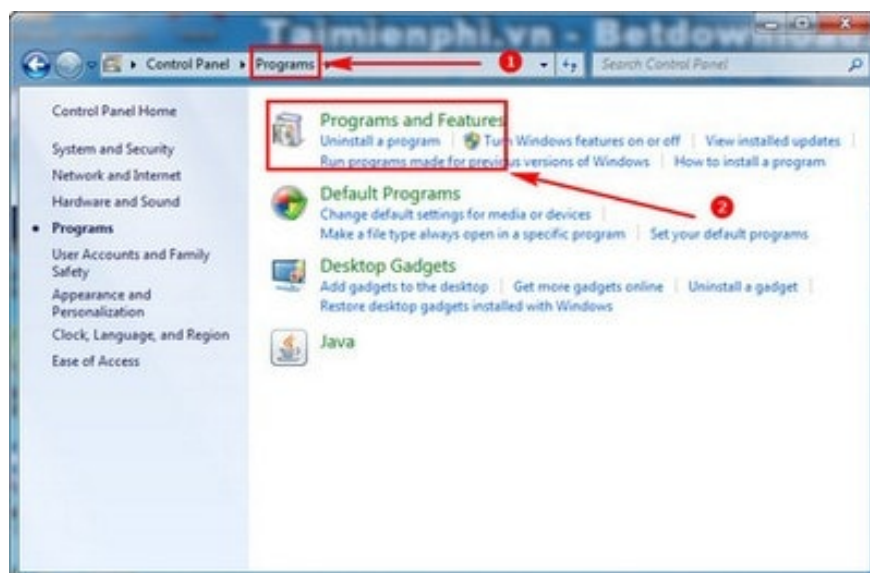
Once you've finished, close Scanpost and open Outlook.

3. Repair Office installation.

Step 1: Click **Start > Control Panel**.

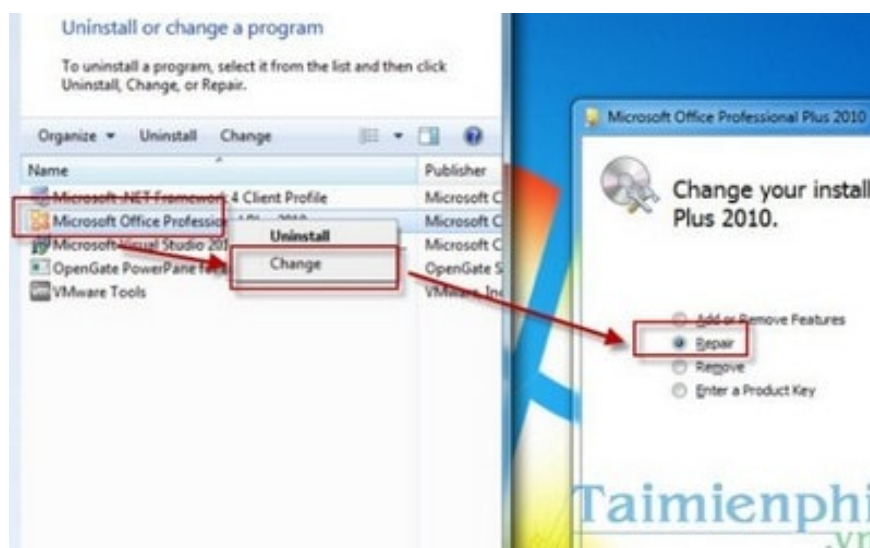


Step 2: Go to **Programs > Programs and Features**.



Step 3: Find the version of **Microsoft Office** you are using, right-click and select **Change** . Then click **Repair** from the window that appears. Click **Continue** to start the repair process.

Finally, **restart your computer** and open Outlook to check.



4. Recreate your profile.

If none of the above methods work, you need to recreate your Outlook profile.

Step 1: Open **Control Panel > Mail** and click **Show Profile**.

Step 2: Click **Add** and name the new Outlook Profile. Finally, set it as the default and delete the old, faulty Profile.



Above are detailed instructions on how to fix connection issues in Outlook. Please follow each step to resolve the problem.

To prevent the loss of emails in Outlook, users can save and back up their emails when needed. Furthermore, saving and backing up emails in Outlook makes it easier to manage a large number of emails, supporting the sending and receiving of emails to multiple clients through Outlook.

Outlook users can also manage other email services like Gmail, Yahoo Mail, and Hotmail using Outlook. Logging into these email addresses using Outlook is the key to managing Yahoo Mail, Gmail, and Hotmail. If you don't already have a Gmail account, sign up now to get one and send and receive emails online – the most popular option!

The "Outlook **There is no email program associated to perform the requested action**" error is one of the most frustrating errors for Outlook users. When this error occurs, you will be unable to access your Outlook inbox. Refer to the guide on how to fix the "**Outlook There is no email program associated to perform the requested action**" error on Windows 10 that Taimienphi has shared for the best solution.

You finished reading the article "**Troubleshooting connection issues in Outlook, preventing emails from being sent or received.**" edited by the [TipsMake](#) team. We hope this article has provided you with many useful tech tips and tricks. You can search for similar articles on tips and guides. Thank you for reading and for following us regularly.

