

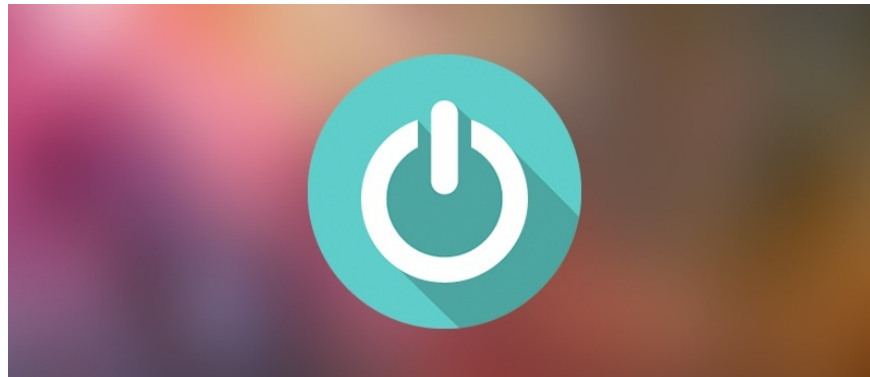
Trick to speed up the process of shutting down the computer, shutting down quickly on Windows

If your computer runs the old operating system, or if your Windows system takes a long time to close all processes and the Service is running, the shutdown process will last longer, making you feel uncomfortable.

Normally on Windows the shutdown process will be faster than the boot process. When you execute the Shutdown command, Windows will close all programs and services that are running. If the application and Service do not make a request from Windows, the system will automatically close all and shutdown.

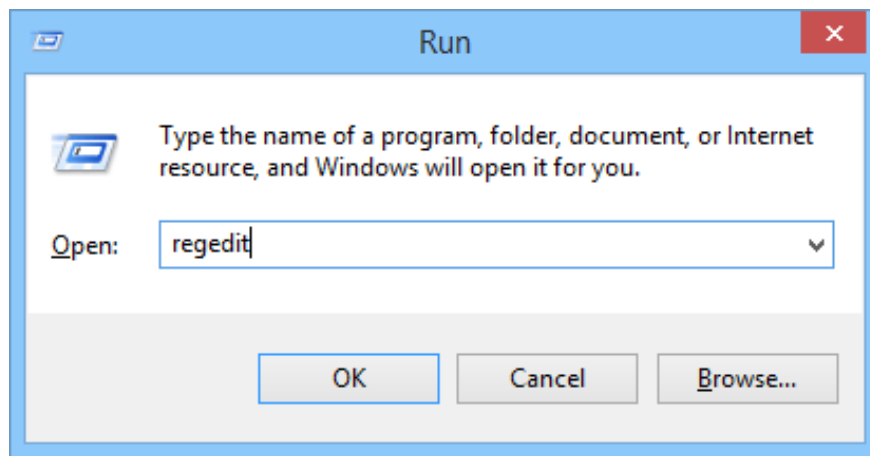
However, if your computer runs the old operating system, or if your Windows system takes a long time to close all processes and the Service is running, the shutdown process will last longer, making you feel uncomfortable. .

In the following article, Network Administrator will guide you how to speed up the process of shutting down your Windows computer.



1. Check the value WaitToKillServiceTimeout

To speed up the shutdown process for Windows, first press the **Win + R** key combination to open the Run dialog box, then enter the **regedit** keyword into the Run dialog box and press **Enter** to open the Windows Registry.

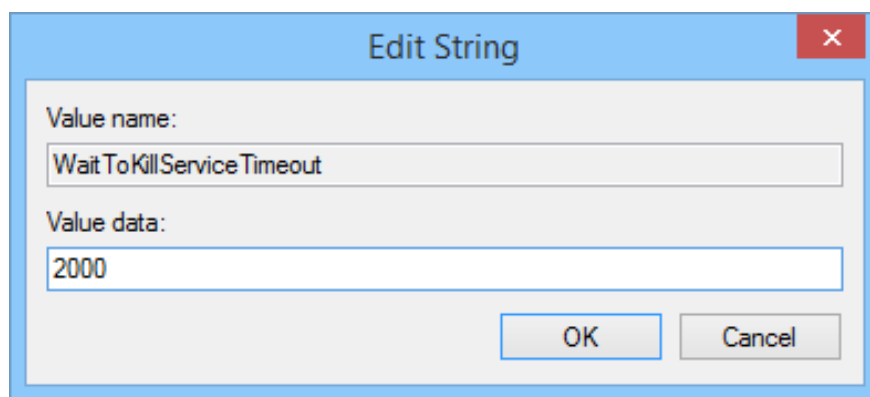


After the Registry window appears, find the following link to find the **WaitToKillServiceTimeout** option:

HKEY_LOCAL_MACHINE\SYSTEM\CurrentControlSet\Control

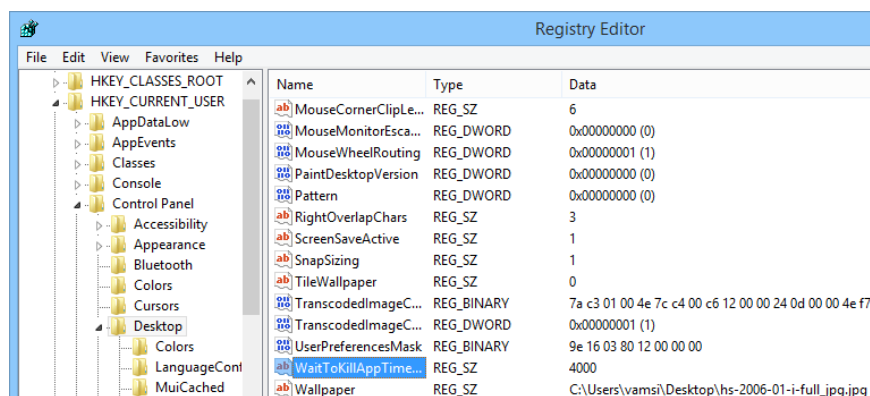
Here you can see the default value set to **5000**.

To change this default value, double-click it and set the value to **2000**, click **OK** to save the change.

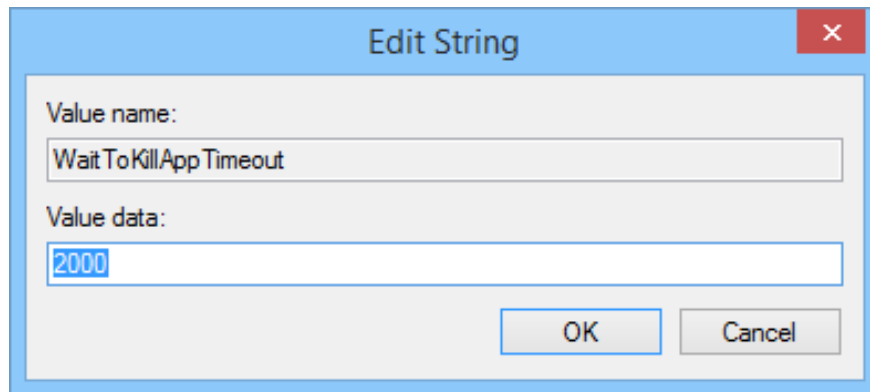


Next, navigate to the following link to find the **WaitToKillAppTimeout** option:

HKEY_CURRENT_USER / Control Panel / Desktop

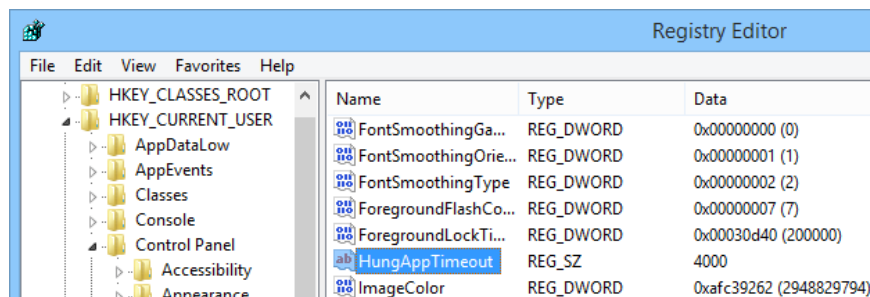


Here you can also double click and change the value to **2000** , then click **OK** to save the changes.



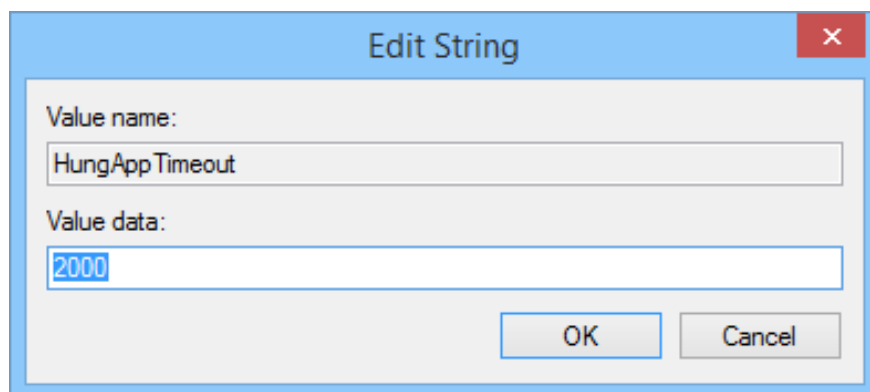
The value of 5000 (5s) and 2000 (2s) is the time that the system waits to shut down the running service before shutting down.

On the Registry window, find the **HungApp Timeout** option and then double-click the option to open it.



If you do not find **HungApp Timeout** , the easiest way is to create a new key named **HungApp Timeout** , then select **New> String Value**.

Here you also set the value in the Value Data frame to **2000** and click **OK** to save the changes.



Value 2000 (2s) is the time that the system waits to turn off the running software before turning off the computer.

This is the simplest way to speed up the Windows shutdown process.

If you want, you can reset the Windows system configuration to automatically turn off the Task without having to ask by searching the **AutoEndTasks** option on the Registry window, then double-clicking the option then changing the value from **0** to **1** .

2. Make sure Windows does not delete the Page File when the computer is turned off

Windows uses Paging files, also known as page files as additional virtual memory. By default Windows hides this option to delete paging files when shutdown.

Windows deletes everything in the page file to make sure that no sensitive data is stored on the system and that others can access it by removing the hard drive and checking paging. file.

Your Windows computer may take a while to turn off the computer because Windows also does a process to delete the page file, if this option is enabled. How long the process takes depends on whether the page file size is large or small and the speed of your hard drive is fast or slow.

However, if your hard drive is encrypted, this option is not required. Encryption will prevent hackers from attacking your page file during shutdown.

If your computer is managed by IT, chances are they have enabled this option. In this case you can minimize the size of the page file again.

Note:

Registry Editor is a powerful tool that affects your system. Therefore, you should back up the Registry Editor to prevent a bad situation when editing the Registry Editor.

You can check if your computer deletes the page file when you shut down your computer by using the Windows Registry.

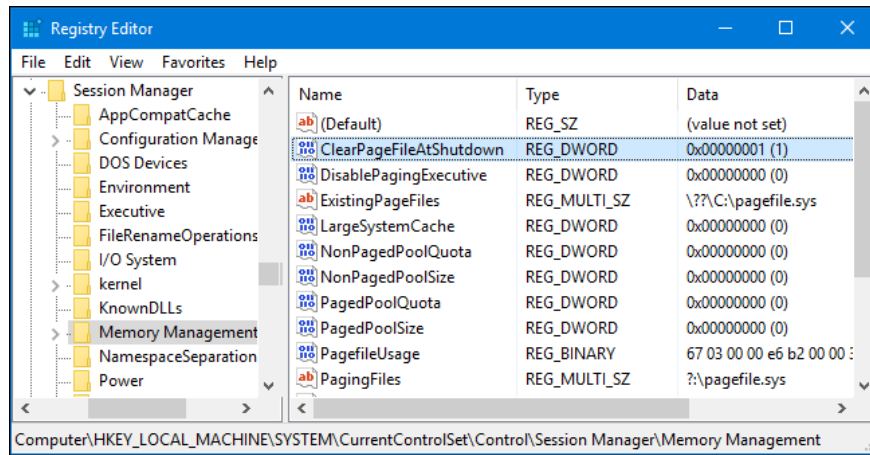
To do this, press the **Windows + R** key combination to open the Run command window, then enter **regedit** there and press Enter to open the Registry Editor window.

On the Registry Editor window, navigate to the key:

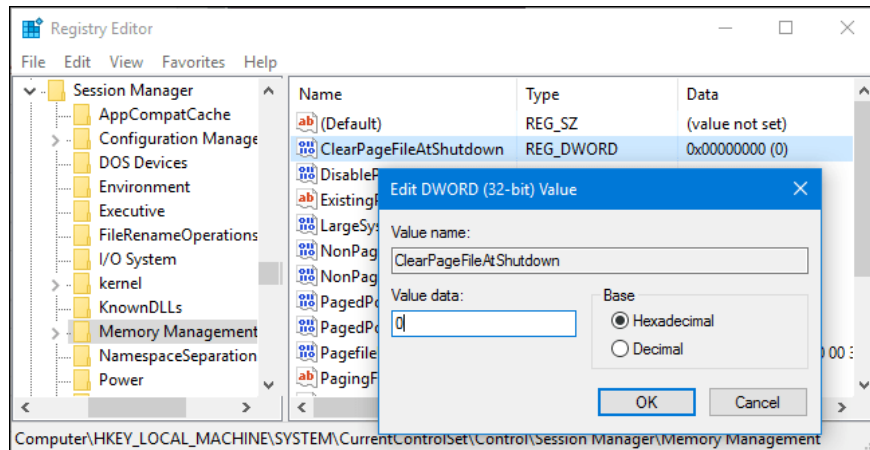
```
HKEY_LOCAL_MACHINE\SYSTEM\CurrentControlSet\Control\Session Manager\Memory Management
```

In the right pane, find the setting named **ClearPageFileAtShutdown** . If the data is set to '**0x00000000 (0)**' , Windows will not delete the page file when you turn off the computer. If set to '**0x00000001 (1)**' , Windows will delete the page file when you turn off the computer.

If you do not find any **ClearPageFileAtShutdown** settings here, you can rest assured that Windows will not delete the page file when the computer is turned off.



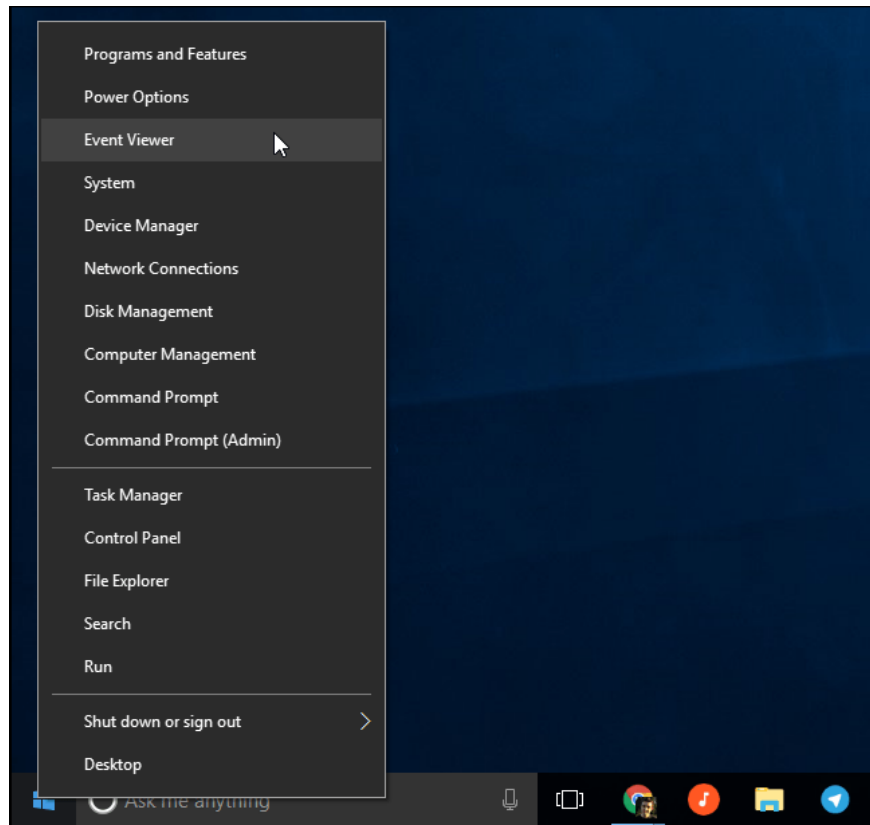
If **ClearPageFileAtShutdown** is set to **1** , you can prevent Windows from deleting the page file when you turn off the computer by double-clicking **ClearPageFileAtShutdown** and setting the value in the **Value data** frame to **0** . And the process of shutting down your Windows computer will become faster than ever.



3. Local Services is the cause of slow shutdown errors

If a service running in the background on your computer can cause the shutdown process to slow down. Instead of sitting there and guessing how old you are, you can proceed to check which service it is.

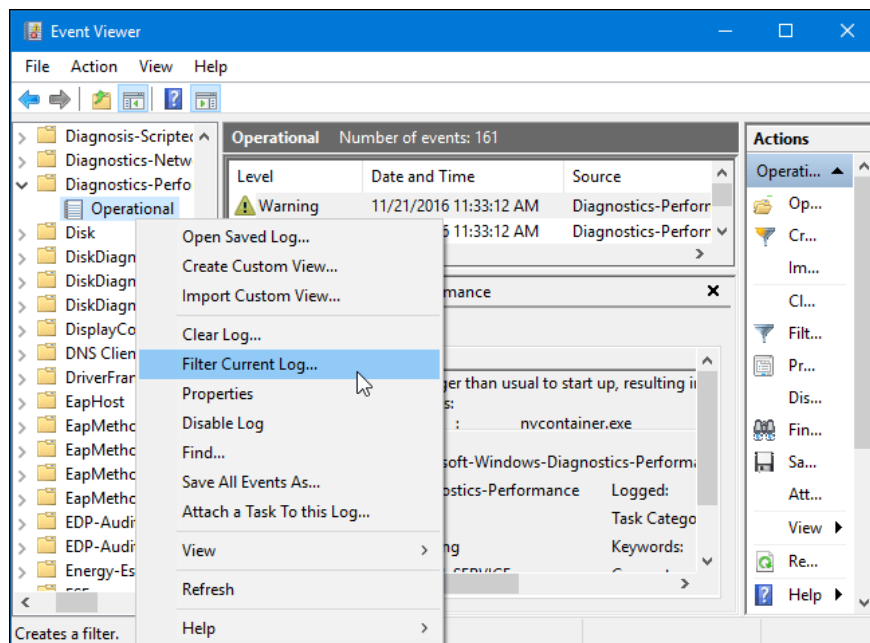
To do this, you will have to use Event Viewer. On Windows 8 or Windows 10, right-click the **Start** button in the bottom left corner of the screen, then select **Event Viewer** or alternatively press the **Windows + R** key combination to open the Run command window, then type ' **eventvwr** ' go there and press Enter.



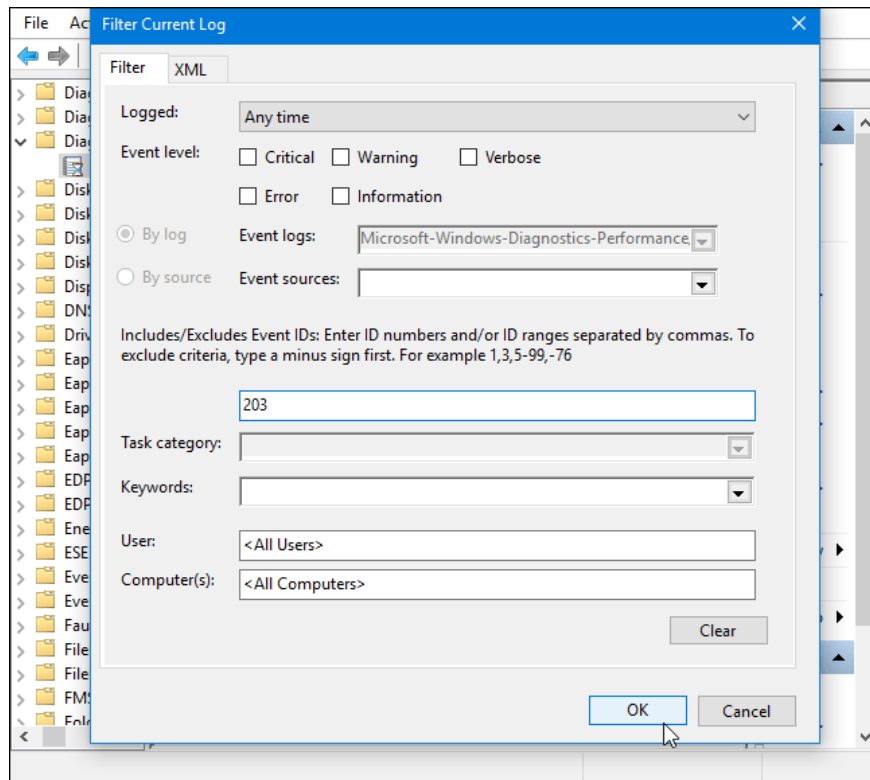
On the Event Viewer window, navigate to the key:

Applications And Services Logs\Microsoft\Windows\Diagnostics-Performance\Operational

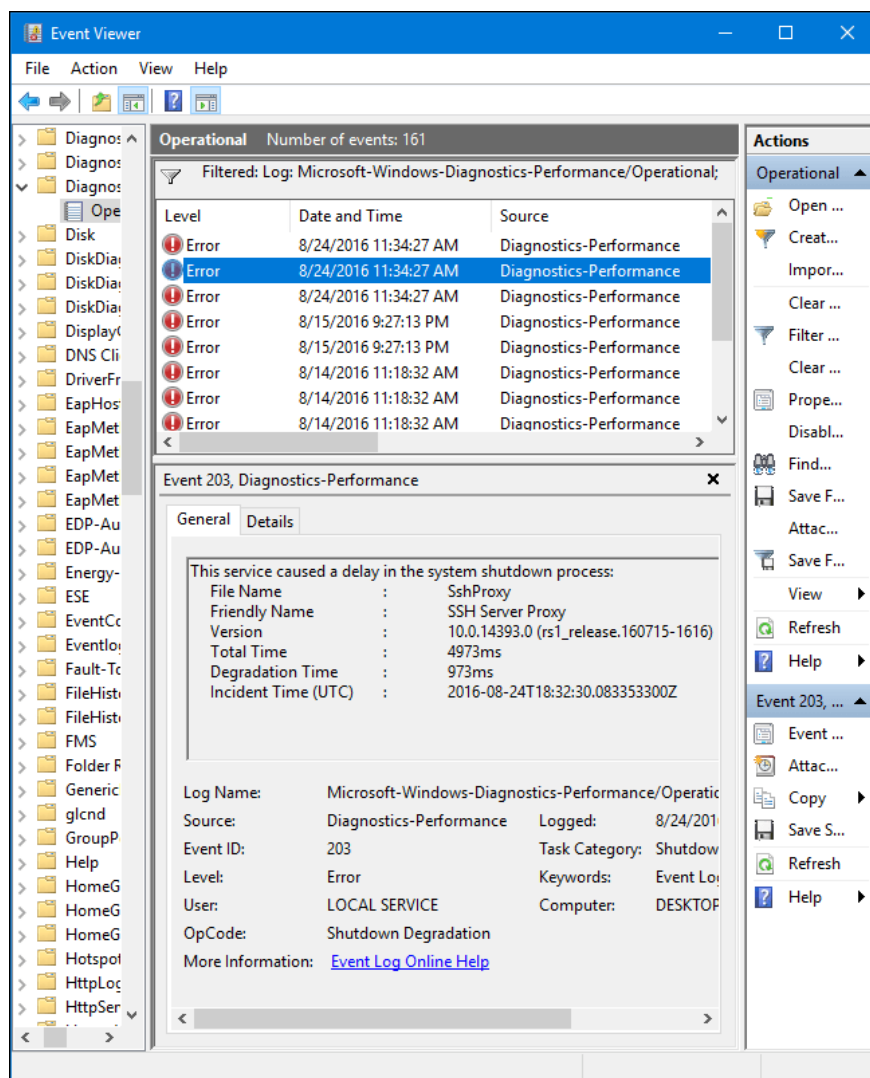
Right-click **Operational** and select **Filter Current Log** .



On the Filter Current Log window, enter **203** in the **Event IDs** box and then click **OK** . This will filter the logs and only show shutdown.



Scroll down the list and you will only see the event named **This service causing a delay in the system shutdown process** . You will see the service name slowing down the shutdown process in the **General** pane. Look at the side of **File Name** and **Friendly Name**.



The information you see here will only tell you which service is causing the slow shutdown process. For example, VPN software may cause the shutdown process to be slow. If the VPN settings are not used regularly, you can uninstall the VPN. You can go online to uninstall the program.

You can refer to some of the following articles:

- 1. 10 tips for Windows 8.1 users to know**
- 2. 4 Ways to Reset Windows to its original state**
- 3. How to disable / enable Windows Firewall in Windows 7, 8**

Good luck!

You finished reading the article "**Trick to speed up the process of shutting down the computer, shutting down quickly on Windows**" edited by the [TipsMake](#) team. We hope this article has provided you with many

useful tech tips and tricks. You can search for similar articles on tips and guides. Thank you for reading and for following us regularly.
