

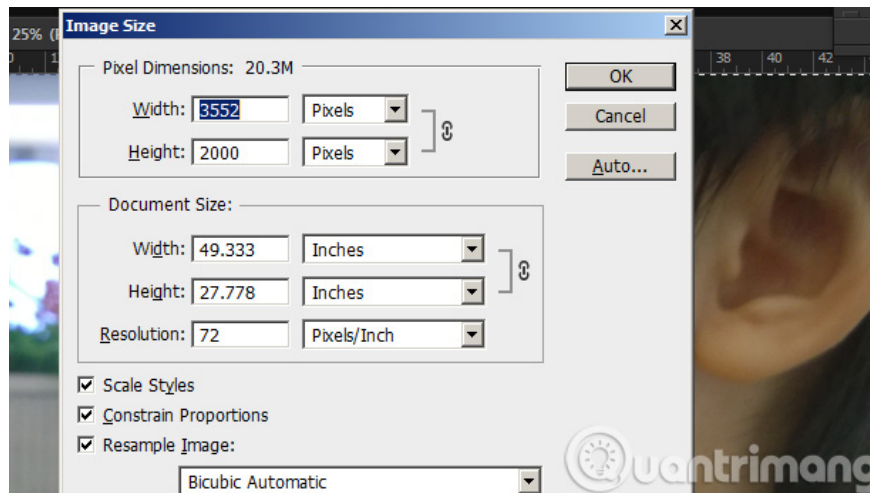
'Transform' a picture into an animated picture or picture using Adobe Photoshop

In the article below, TipsMake.com will guide you how to turn the photo into a painting, so that it resembles the animated film, or is it Cartoon. For portraits, this is quite interesting, as a result you will have a very lively, attractive and attractive image.

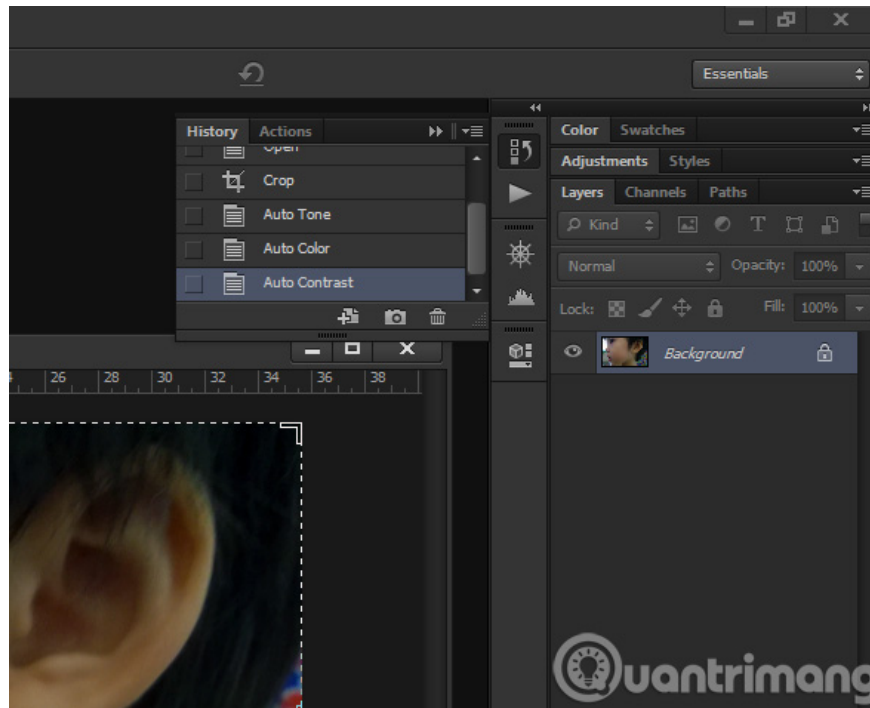
In the article below, TipsMake.com will guide you how to turn the photo into a painting, so that it resembles the animated film, or is it Cartoon. For portraits, this is quite interesting, as a result you will have a very lively, attractive and attractive image. The operations in the lesson are done by Adobe Photoshop software.

1. Steps to perform "cartoon" to turn the photo:

First, we will need a portrait photo (of course!) With high resolution. As in this example, I used a picture taken with Lumia 920, size 3552 x 2000:



Using the Crop tool, cut off the main part of the image, which is all the portraits, the baby's face, and the rest of the image. Applying additional modes to automatically balance color, contrast . at will to bring a natural look to the photo:

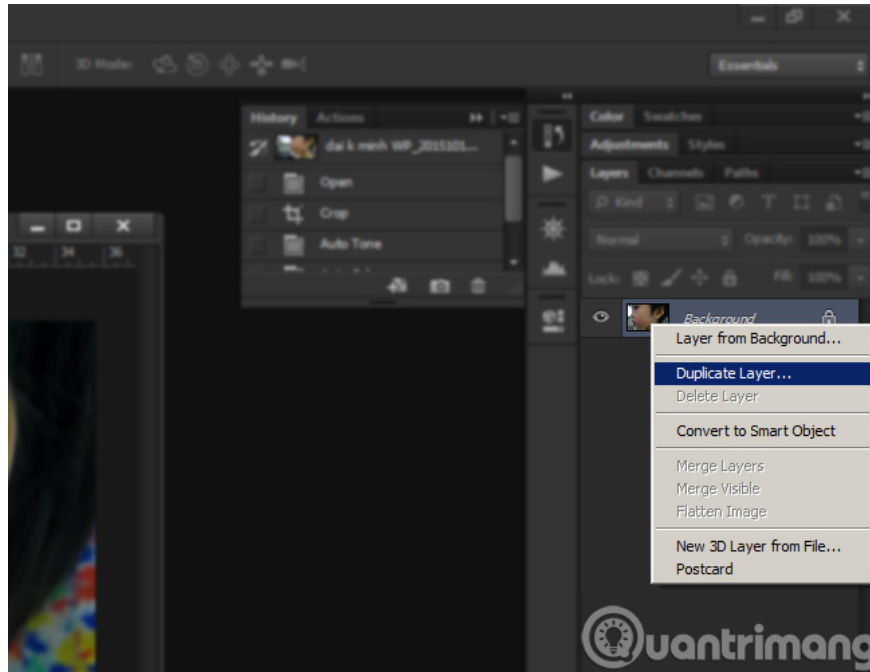


1. **Ctrl + Shift + L = Auto Tone**
2. **Ctrl + Shift + B = Auto Color**
3. **Ctrl + Shift + Alt + L = Auto Contrast**

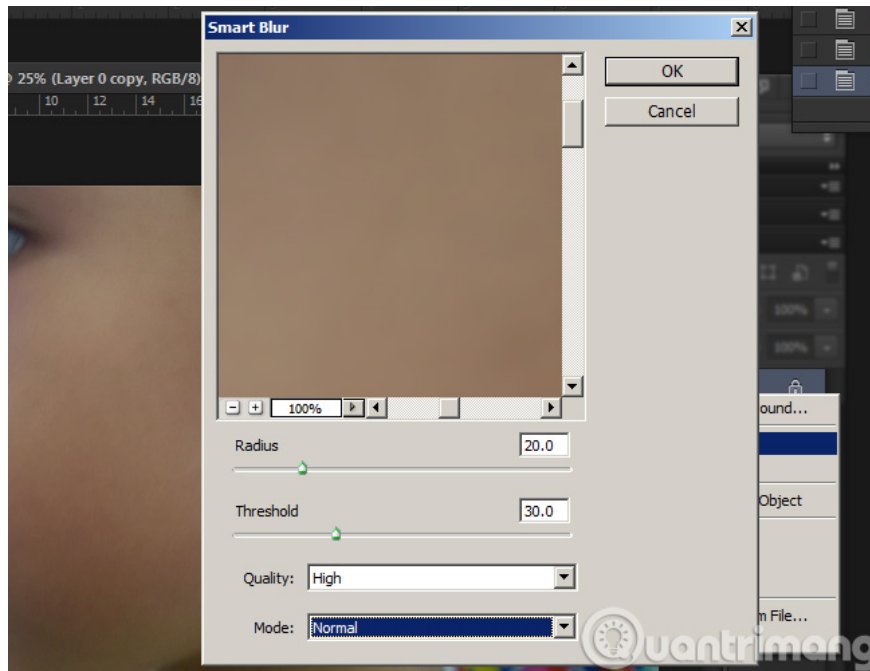
See more:

1. Summary of shortcuts in Adobe Photoshop

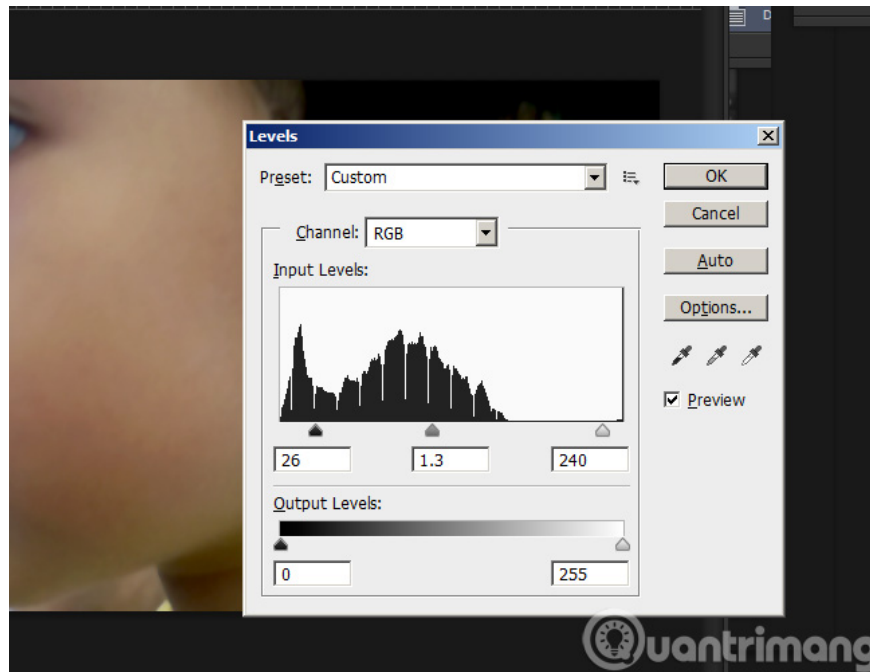
Next, **Duplicate** that **Background** . Right-click on the **Background Layer** and choose **Duplicate Layer** :



Whatever you do, make sure you Duplicate Layer to avoid mistakenly manipulating the original Layer
Apply Filter Blur, change **Radius** and **Threshold** values ??depending on the photo:

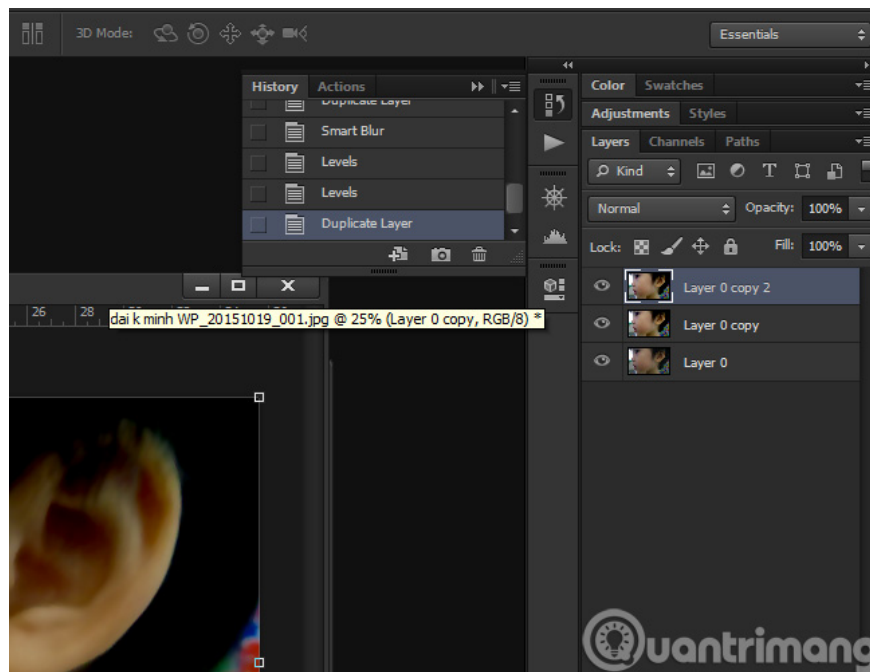


This will help reduce wrinkles on the image, or say how to smooth the skin, which will be easier in the next steps. Continue, press **Ctrl + L** to change **Contrast = contrast** value, how to look like an animated picture:

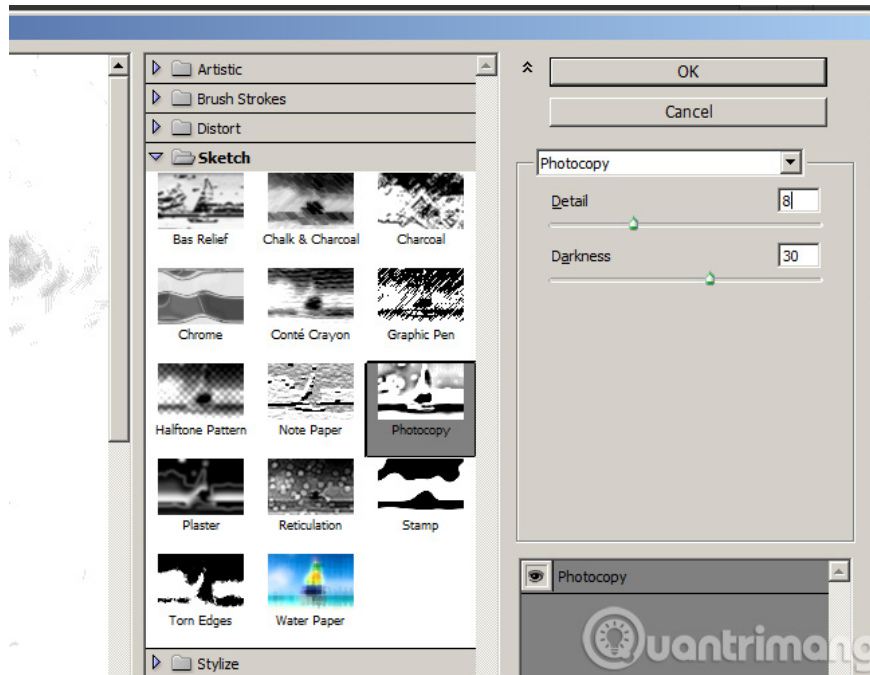


Change the corresponding value: 26 - 1.3 - 240

Through some basic steps as above, we have seen the picture has changes in skin, smoothness . but there are still some rough, hard details in it. Continue to redo or change the parameters as above until you feel satisfied, stop, go to the step below. Please **Duplicate Layer** just apply the **Filter** (not the original Layer), we will have the next **layer** as shown below:



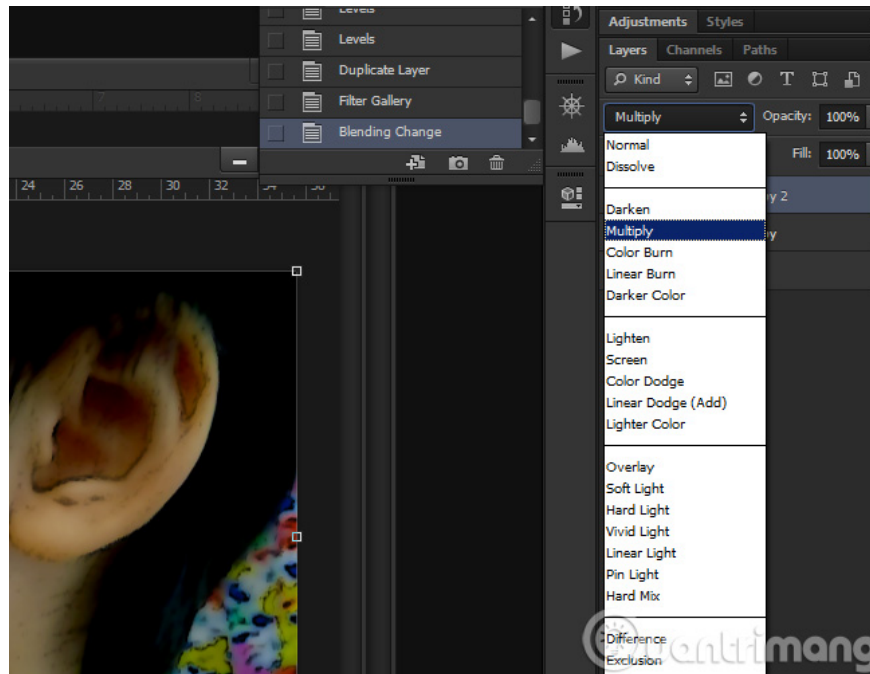
On that Duplicate medium, apply **Filter> Sketch> Photocopy** (for old Adobe Photoshop versions), and for newer versions go to **Filter> Filter Gallery> Sketch** (for those using GIMP that apply Photoshop filter is in **Filters> Artistic> Photocopy**):



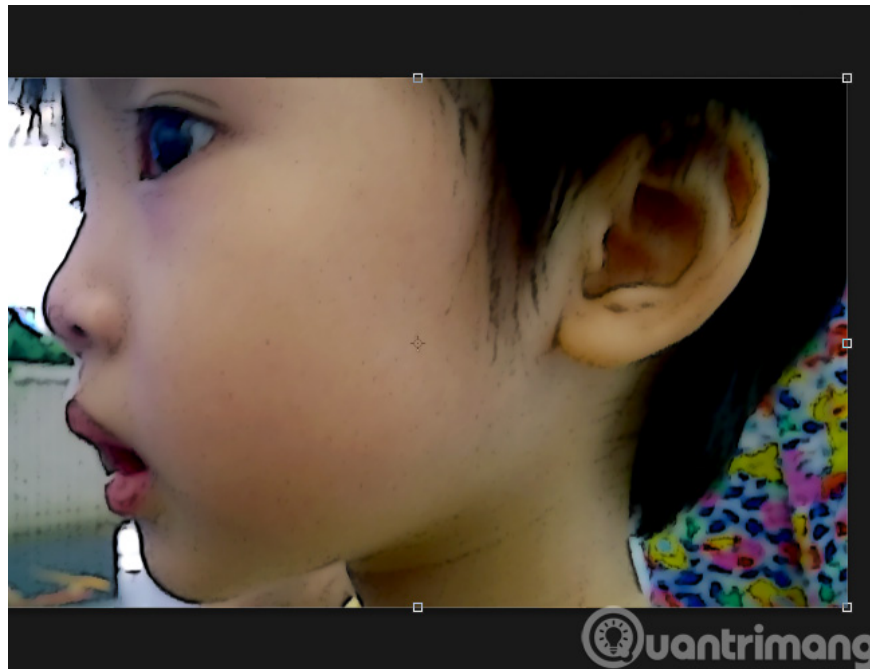
If your photo looks strange and unintended, you can change the color mode to black and white by pressing the D button and applying that Filter Sketch again. Check the result:



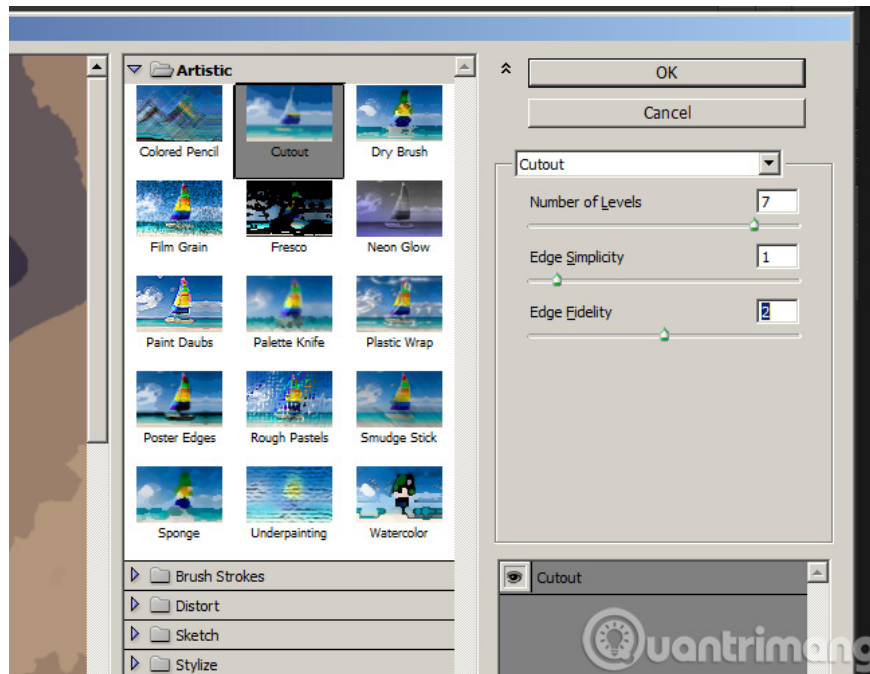
Temporarily like this, switch the **Layer** mode on top from **Normal** to **Multiply** :



After changing the Layer mode to Multiply, the image will look like this:



It looks good, right? But still not honest, lively, sharp. Select the middle layer, then apply **Filter> Artistic> Cutout** :



Then review the result as well or not. If not, please change the values, Filter parameters in the above steps and continue applying, until you feel OK, stop. So with just a few basic operations, TipsMake.com has guided you how to "turn" photos, portrait photos into drawings, animated with Cartoon effects.

Good luck!

You finished reading the article "**Transform' a picture into an animated picture or picture using Adobe Photoshop**" edited by the [TipsMake](#) team. We hope this article has provided you with many useful tech tips and tricks. You can search for similar articles on tips and guides. Thank you for reading and for following us regularly.