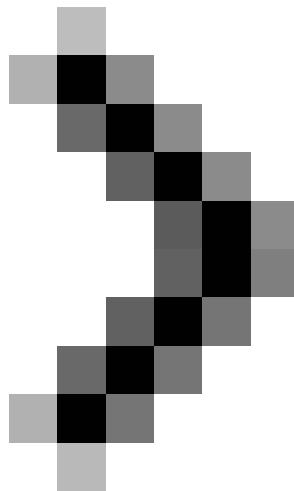


Transfer MDAemon to Exchange 2007/2003 (Part 2)

In the previous section, we learned how to export and import accounts and passwords from MDAemon to Active Directory of Exchange Server systems when needed.

In the previous section, we learned how to export and import accounts and passwords from MDAemon to Active Directory of Exchange Server systems when needed. In this part 2, we will continue the authentication operation for this directory (Active Directory), switch the Global Address list and navigate the email.



Transfer MDAemon to Exchange 2007/2003 (P.1)

The first thing to do is to ensure that Exchange Server 2007 can receive, send and navigate information back and forth to the Internet, MDAemon Server and local mailboxes.

To perform this task we need to configure Receive Connectors, Send Connectors and other exchange components in the system that is executing the conversion. The situation is that all mail traffic is using the

current MDAemon server (Figure 1). So in this article, we will configure Exchange to handle SMTP traffic and also communicate with MDAemon Server.

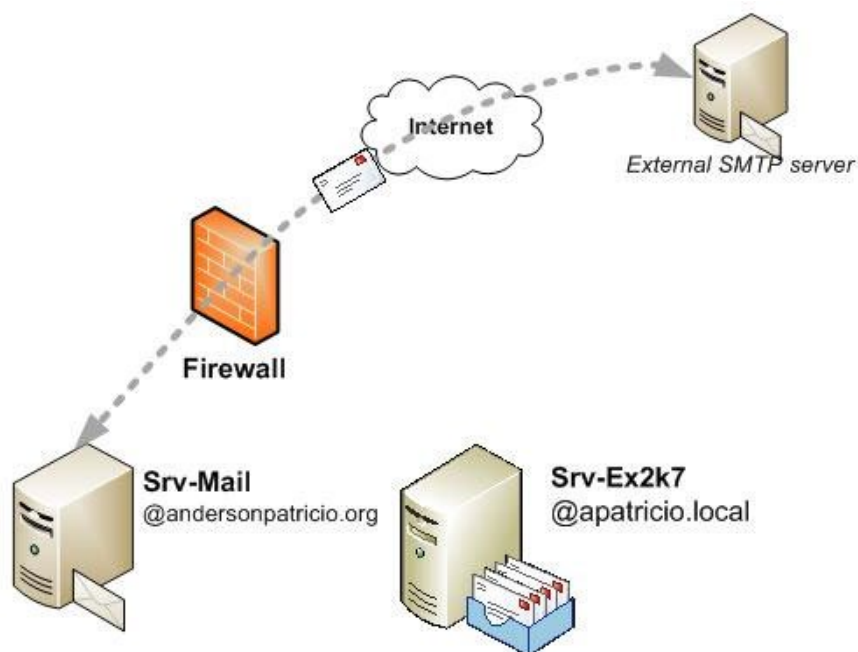


Figure 1: Model of mail server system.

Configure Accepted Domain and Email Policies

By default, all Exchange 2007 installations have a single default domain name and that is **Full Qualified Domain Name** (current FQDN) of the current **Active Directory** . In the situation set in the article, the **Active Directory FQDN** is **apatricio.local** , meaning that Exchange will only accept emails sent to users in **domain@apatricio.local** .

We will first have to configure the **Exchange Server** system to accept the domain name that is being used by **MDaemon** and also configure it as a shared **SMTP Address** . Please follow the steps below to configure **Domain** to approve and share.

1. Open the **Exchange Management Console** .
2. Expand the **Organization Configuration** section .
3. Click on **Hub Transport** .
4. Select the **Accepted Domains** tab.
5. In **Toolbox Actions** , click **New Accepted Domain** and then enter a label for the new domain in the **Name** box.
6. Enter the **Accepted Domain** name that will appear in the **Exchange** system.
7. Select the **Internet Relay Domain** radio button (Figure 2).
8. Click the **New** button and **Finish** in Figure 2.

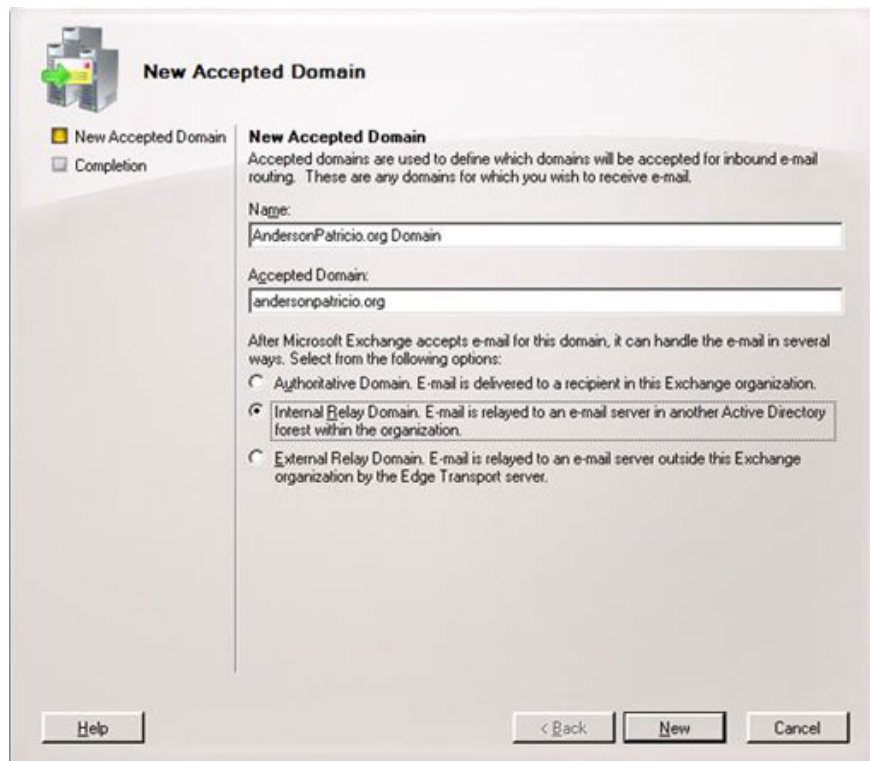


Figure 2: Newly created Accepted Domain window.

Once you have selected the **Relay Domain Internet** option for an **Accepted Domain**, that domain will be unclear, meaning Exchange will accept Relay for this domain. However, users of that domain may not exist in the Exchange Organization. Exchange will check whether the emails sent to that domain conflict with the proxy address of the current user. If Exchange does not find the SMTP address, this email can be directed to another server via **Send Connector**. If we leave the default setting (Authoritative Domain), every email sent to Exchange will not contain a user's SMTP address in **Active Directory**, and then an NDR will show that the email address does not exist. in.

Now that we have the **Accepted Domain**, we will then configure the shared SMTP address so that this address will show up in all new user accounts and current user accounts. Follow these steps:

1. Go to **Exchange Management Console**.
2. Expand **Organization Configuration**.
3. Click on **Hub Transport**.
4. Select the **E-mail Address Policies** tab.
5. Double-click **Default Policy**.
6. In the Wizard, click the **Next** button twice.
7. On the **Email Address** page, click the **Add** button and select **SMTP Address**.

In the last window we will configure **SMTP Address Policy** to be applied to all users. This part is very important in the case of Coexistence (using a combination of two systems) because every converted user will be created on the Exchange server and they will be the object that SMTP Policy will apply. If the current **SMTP Policy** matches the **SMTP Address** used in **MDaemon**, then we will not have to configure the SMTP address after the conversion. After completing the configuration for SMTP Policy, click the **OK** button (Figure 3).

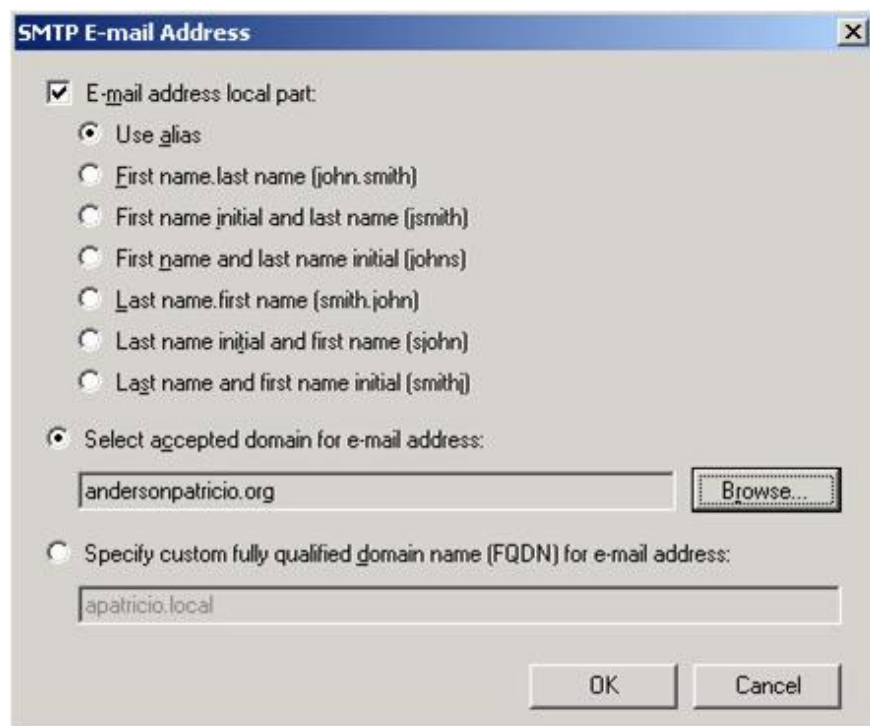


Figure 3: Configuration for SMTP Address Policy.

All SMTP addresses (assigned to users of this Policy) will be displayed (Figure 4). As in the example in the article, all users in the **Exchange Organization** will receive two **SMTP Addresses** : @ **andersonpatricio.org** and @ **apatricio.local** . It is best to keep at least two different addresses because we will use the second address that is not used by **MDaemon** to navigate the internal email from MDAemon. Then click the **Next** button twice and click the **Edit** button to apply the new Policy to existing users instead of the default settings currently in use.

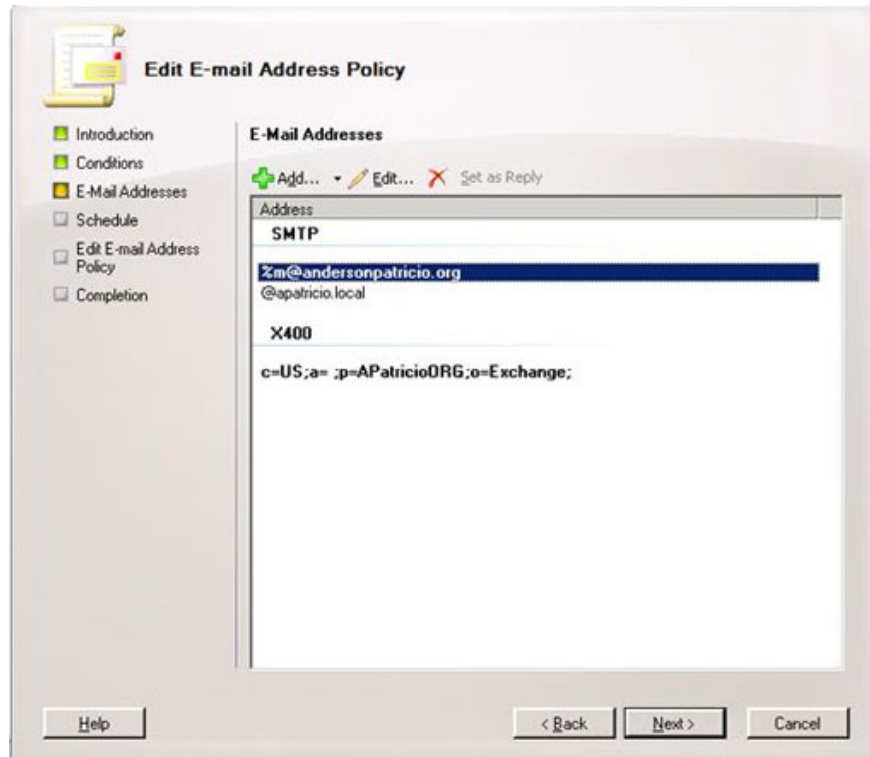


Figure 4: Email Address Policy adjustment window.

After applying **Email Address Policy** , we can double-click on an existing user or create a new user and any SMTP Address configured in the default Policy will be displayed in the **Email Addresses** tab of the properties window. User objects in the **Exchange Management Console** .

Configure Send Connectors

The next step is to configure the **Exchange** server to direct email to **MDaemon** and the **Internet** . Please follow the steps below to navigate **SMTP** to **MDaemon** :

1. Open the **Exchange Management Console** .
2. Expand the **Organization Configuration** section .
3. Click on **Hub Transport** and then select **Send Connectors** tab.
4. Click on **New Send Connectors** in the **Toolbox Actions** .
5. Enter a name for the **Connector** and select the **Internal** option in the drop-down list.
6. Then click the **Next** button (Figure 5).

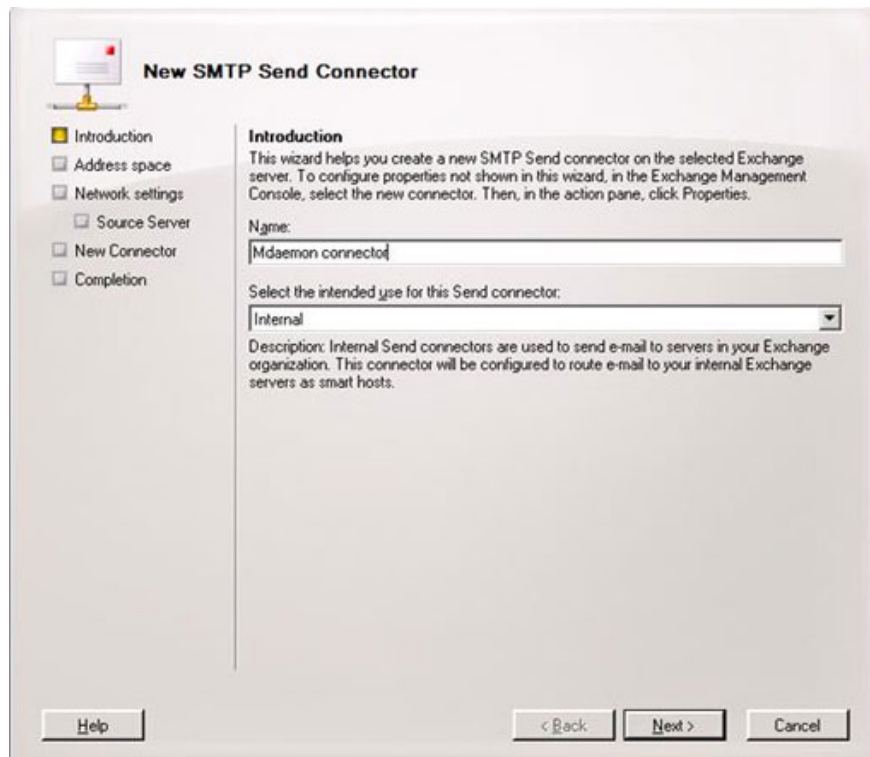


Figure 5: Enter the name and select the scope of use for SMTP Send Connector.

In the **Address Space** area, click the **Add** button. In the **Address** field, add the domain being shared between the two mail systems and click **OK** (Figure 6).

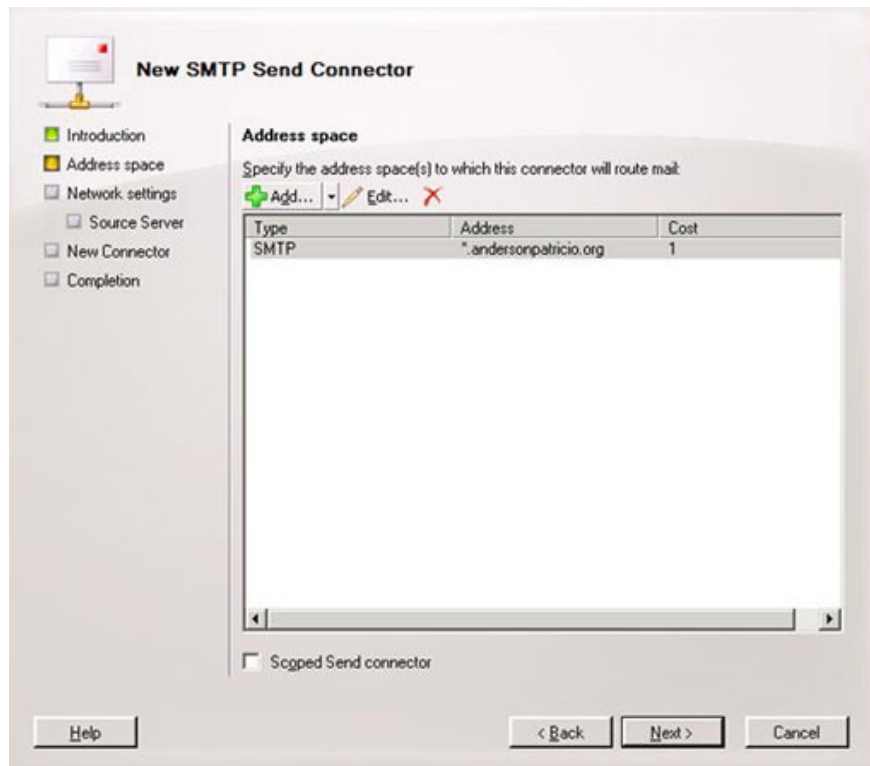


Figure 6: Adding shared domains to Address Space.

At this point we were able to confirm that every email sent to the @ **andersonpatricio.org** domain is routed through this connector. In the next page of Wizard **New SMTP Send Connector** we will perform the destination configuration for these emails (in our example, MDAemon server).

Note: *Email can only be redirected when there is no local mailbox using that email address.*

Click on the **Route mail** option **through the following smart hosts** and then click the **Add** button. Here, you add the IP address of the group 3 mail server and then click **Next** .

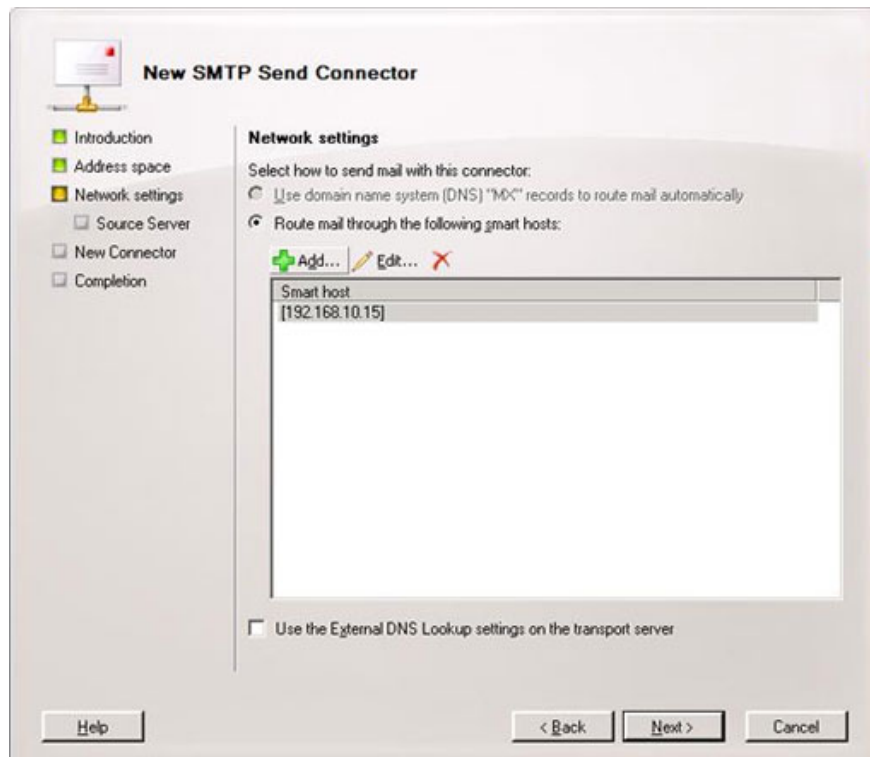


Figure 7: Adding IP address of group 3 mail server.

Since we are using both servers in the local network, the authentication process will not be applied to the navigation of the email, but we can configure it via a few options in the **Authentication** Permissions settings page. **Settings** . If you want to keep the default settings, click the **Next** button. In the **Source Server** source server you need to make sure the local **Exchange Server** is displayed and click on the **Next** button. In the next page, click on the **New** button, then click **Finish** to finish the process.

The second step is to use **Send Connectors** to configure **Exchange Server** to send mail to the Internet, and then configure all incoming and outgoing traffic through **Exchange Server** . Before you proceed, make sure that Exchange is ready to receive and send mail smoothly.

The process of creating a **Send Connector** to send email to the Internet is done through the **Send Connector Wizard** , including the following:

1. **Introduction** : Name this **Connector** and select the **Internet** .
2. **Address Space** : Add an SMTP address and use the * character in this address field.
3. **Network Settings** : Leave the default settings unchanged.
4. **Source Server** : Keep the default settings.

In addition to performing the configuration of the **Send Connector** component on **Exchange Server** , you need to configure some other components used to send email such as Reverse DNS, SPF Record and FQDN in Send Connector using the FQDN name suitable.

After you have completed the **Accepted Domain** configuration, the **Recipient Policy** and **Send Connector** we can see these settings are applied to the system.

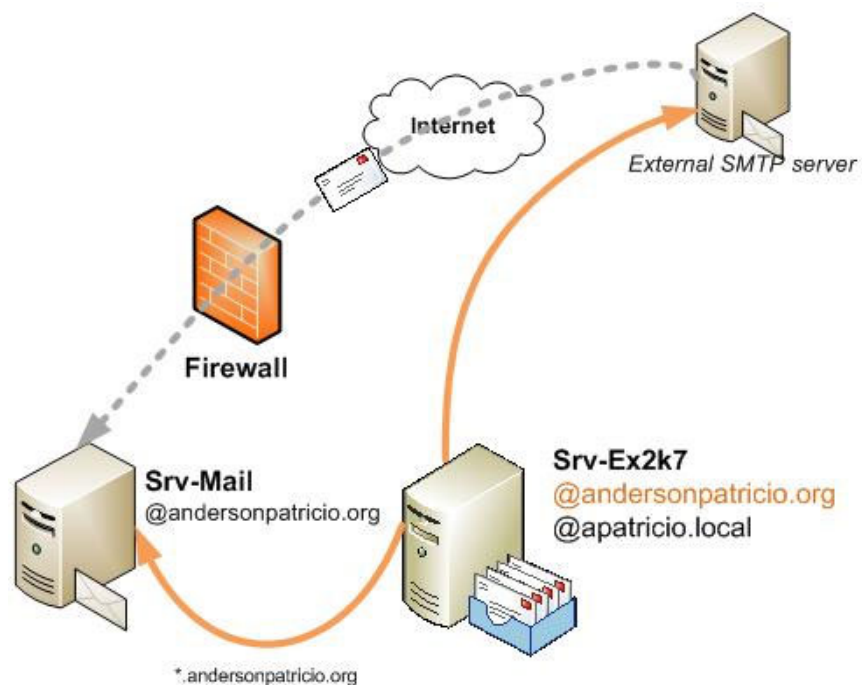


Figure 8: Method to send and receive mail on the system after applying the settings.

Conclude

In this second part, we conducted an Exchange configuration that navigated the mail to the MDAemon server and sent mail to the Internet. In the next section we will continue to configure routing and perform some tests to evaluate the SMTP routing structure.

You finished reading the article "**Transfer MDAemon to Exchange 2007/2003 (Part 2)**" edited by the [TipsMake](#) team. We hope this article has provided you with many useful tech tips and tricks. You can search for similar articles on tips and guides. Thank you for reading and for following us regularly.