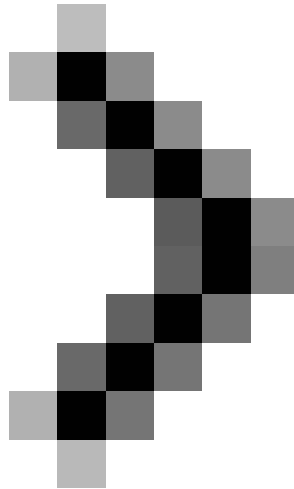


Transfer from Linux Mail Server to Exchange Server 2007 (Part 3)

Through the previous two sections we have created users, this article will switch to the user information section. Using the New-Mailbox command cannot add the information we have in the CSV file.



Transfer from Linux Mail Server to Exchange Server 2007 (Part 1)



Transfer from Linux Mail Server to Exchange Server 2007 (Part 2)

Anderson Patricio

Update user information in Active Directory

Now that we have created the user, we will switch to the user information section. Using the New-Mailbox command cannot add the information we have in the CSV file. So use the same Exchange Management Shell session and run another command to add the information side in the \$ Passwdfile variable of the newly created user. The following command can be used (Figure 1):

```
$ FilePasswd | ForEach {Set-User $ _. Username -Office $ _. Office -Phone $ _. OfficePhone  
-HomePhone $ _. HomePhone}
```

```
Machine: srv-2k7-ex01 | Scope: apatricio.local
LastName : LastName49
Office   : Porto Alegre
OfficePhone : 103 171
HomePhone : 103 666

UserName : user50
DisplayName : User 50
FirstName : User50
LastName : LastName50
Office   : Canoas
OfficePhone : 104 171
HomePhone : 104 666

UserName : andrei.patricio
DisplayName : Andrei Patricio
FirstName : Andrei
LastName : Patricio
Office   : Canoas
OfficePhone : 105 171
HomePhone : 105 666

[PS] C:\>$FilePasswd | ForEach { set-user $_.UserName -Office $_.Office -Phone $_.officePhone -HomePhone $_.HomePhone }
```

Figure 1: Add more information from \$ Passwfile to current AD accounts

The results seen in the User's Properties are shown in Figures 2 and 3 below.

The screenshot shows the 'anderson.patricio Properties' dialog box. The 'General' tab is active, displaying the following information:

- First name: Anderson
- Last name: Patricio
- Display name: Anderson Patricio
- Office: Toronto's office
- Telephone number: 55
- E-mail: Anderson.Patricio@apatricio.ca

Figure 2: The user has received information from the \$ PasswdFile variable

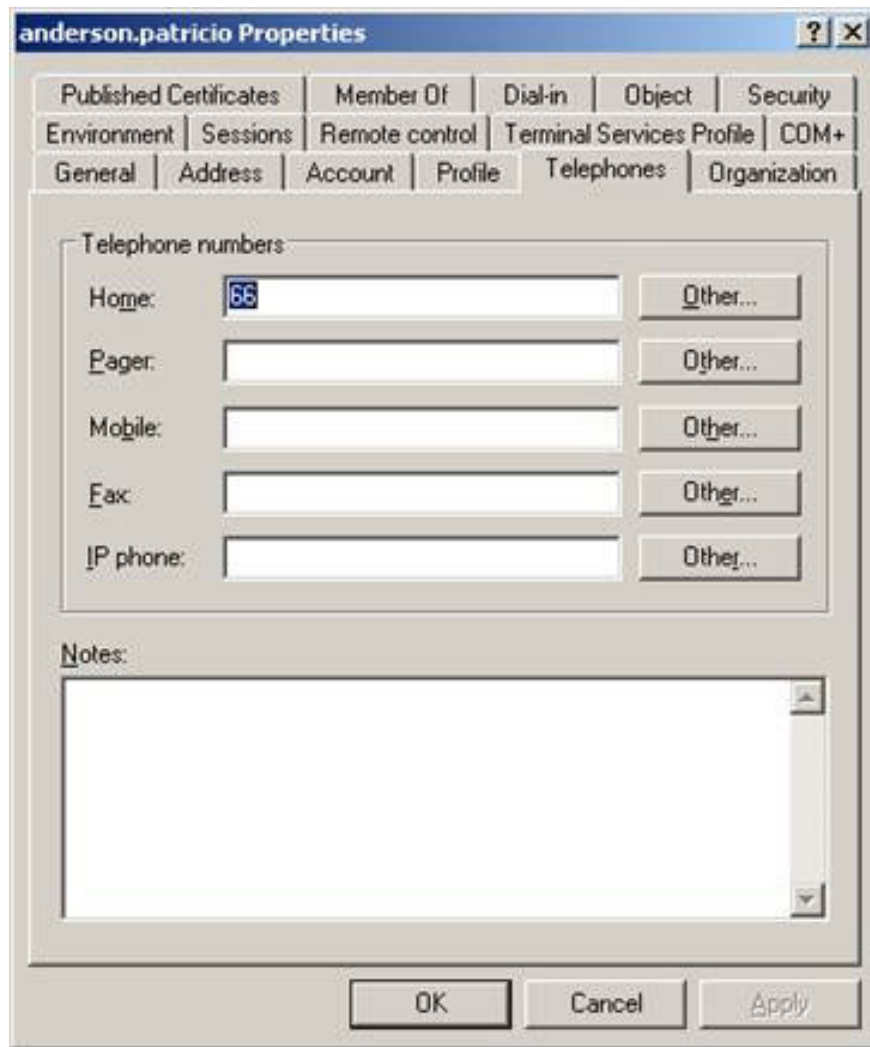


Figure 3: User and phone number created in the Linux box

Using the same concept, we can create additional columns in the *passwd.csv* file to add more information in the new user account. For example, we can create a column called *MobilePhone* in the CSV file, add more information to all users and *add -MobilePhone \$ _ . MobilePhone* in the *set-user* command. Using this logic we can add the desired information in the new environment via the original CSV file.

Group the workstations in the Active Directory domain

To switch to a new environment, we must first work on workstations. Then note the following points before starting the process:

- Make sure that all workstations use Active Directory DNS Server in DNS settings.
- All workstations use the correct DNS suffix (Active Directory suffix)
- Declare users after connecting their workstations in Active Directory, must log on to the domain with the current user name information used to access the pre-set mail and password system.

- Download the Windows 2003 Resource Kit and allow copying to all workstations as needed.
- It is possible to perform this process slowly rather than working on all clients at the same time.

We have just introduced some initial settings. All workstations need to be resolved through the Active Directory DNS Server and can access DNS resolution from an old zone (apatricio.ca) without problems. At this point, we can start migrating clients from the workgroup to Active Directory.

1. Enter the workstations into Active Directory
2. Additional information can be found in this article.
3. Log in locally as *Administrator* .
4. Copy moveuser.exe to c:
5. Configure the internal profile to be used with new Active Directory accounts (Figure 4). Run the following command:

Move

Local user is the internal user name they are using.



```
C:\WINDOWS\system32\cmd.exe
C:\>moveuser anderson.patricio apatricio\anderson.patricio
Moving profile from XPLIENT\anderson.patricio to apatricio\anderson.patricio...
Move was successful.
C:\>_
```

Figure 4: Switching the internal user profile to be used in the new Active Directory account

5. Log out with the computer as an administrator.
6. Users can login using their original username and password that we set up during the process of creating mailboxes via Powershell.
7. After logging in, the user will receive a message asking to change the password. Remind them to use the same password they are using to access Linux to receive mail.
8. Users need to access the same information they had before we moved the profile using moveuser.exe tool. Here the user experience will be similar; It includes desktop icons, Outlook Express, and so on, as shown in Figure 5.

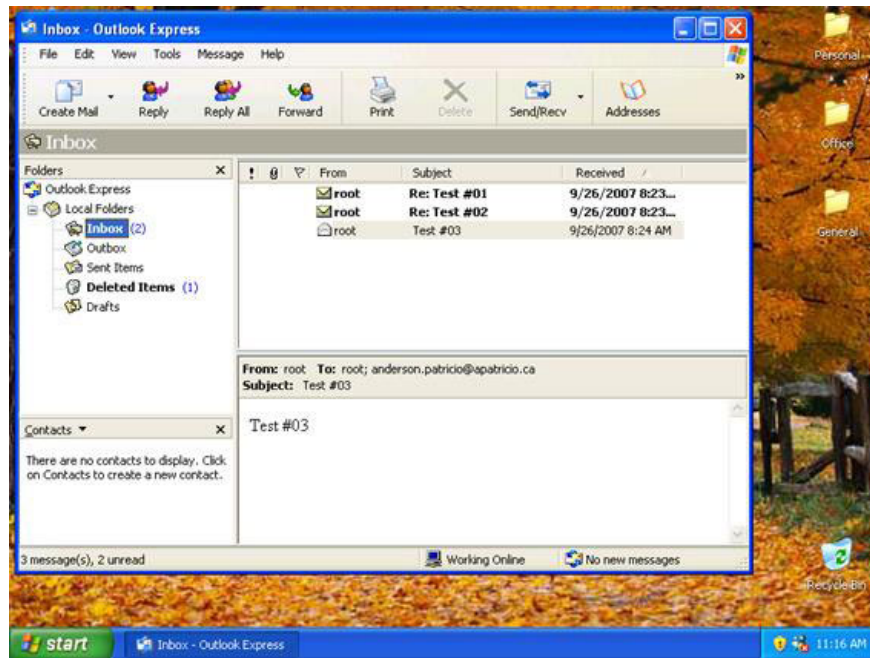


Figure 5: Users who are logged in to the domain will be able to access the information they have used internally

Transformation - current status (Update # 02)

Now our workstations have started to be migrated to a new domain, all users are using Active Directory accounts to log in to the domain. Our users have enabled mailboxes, although they are still accessing the Linux Box. The picture of the working environment can be seen in the picture below:

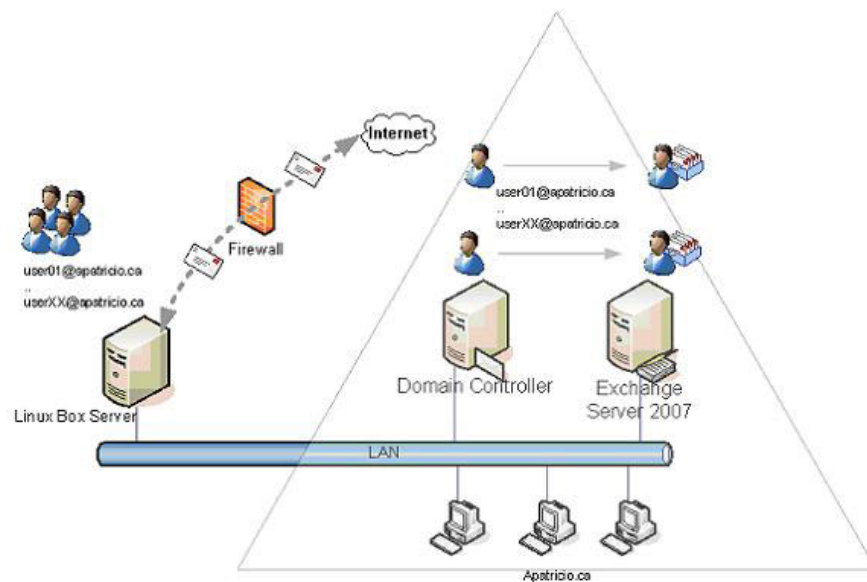


Figure 6: Current state of the script

The next steps will enable Exchange Server 2007 to accept the current client settings before switching to Windows Server 2007, to do so we must set up some components of Windows Server 2007 such as:

1. POP3
2. Receive Connector
3. OWA

Configure POP3 settings in Windows Server 2007

Install Outlook 2007 on all workstations but until now existing clients using Outlook Express still work fine. We will adjust them to Windows Server 2007 using the current settings. To do that we need to enable POP3 in Exchange Server 2007:

1. Open the Exchange Management Console.
2. Go to *Client Access* section.
3. In the working pane, click *Exchange Server 2007* , in the results pane, click *POP3 and IMAP4* tab
4. Click *POP3* and in Toolbox Actions click *Properties* under POP3.
5. Click the *Authentication* tab.
6. Select *Plain text login (Basic Authentication)* as shown in Figure 7.

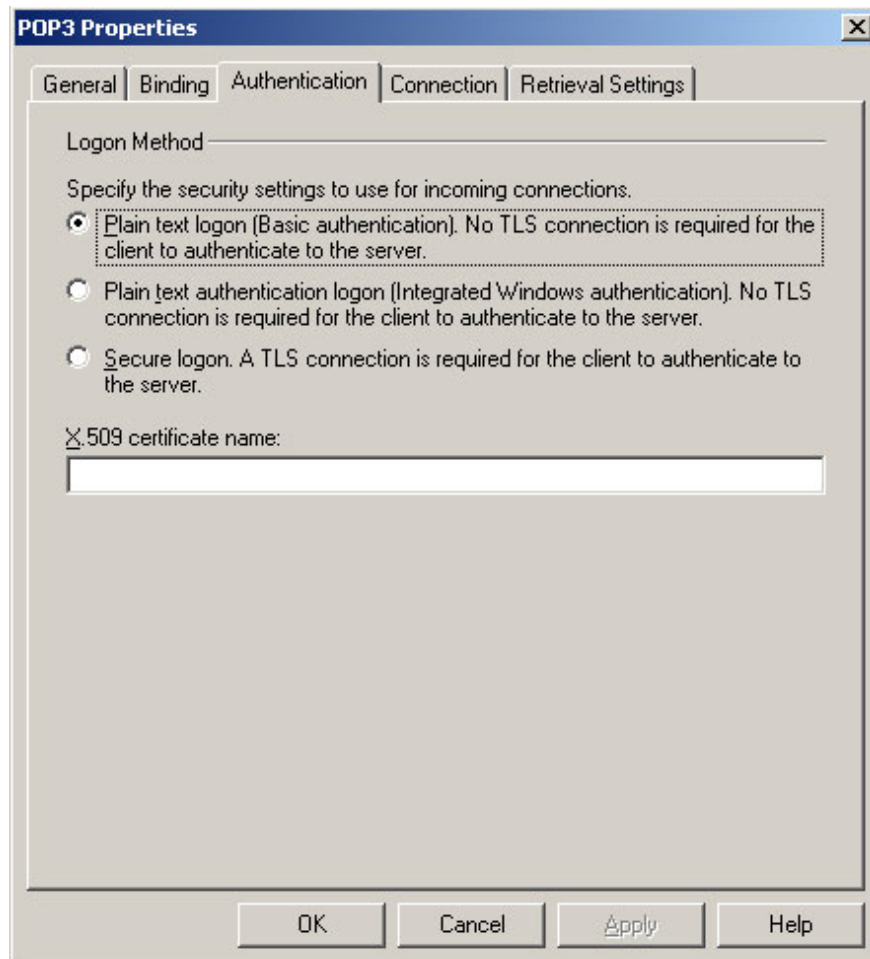


Figure 7: POP3 authentication configuration

7. Click *OK*

8. Open *services.msc* and configure POP3 Service to start automatically and click *Start* .

Get a workstation to validate the new POP3 Settings. Configure this workstation with a test user in the current environment (Linux box) and then change Outlook Express settings to use the Exchange Server IP address. Set up to test users who can download messages via POP3 protocol. We can send some test messages to the user mailbox using Exchange 2007 OWA because the new Exchange 2007 mailbox of the new user is empty.

Configure Receive Connector for internal users

To allow internal users to send mail through SMTP, we can create a Receive Connector to allow all internal clients to send messages through it. This will be a temporary configuration. After installing Outlook 2007 on clients they will use MAPI and this connector may be removed.

1. Open the *Exchange Management Console* .

2. Open *Server Configuration* .

3. Click *Hub Transport* .
4. In Toolbox Actions, click *New SMTP Receive Connector* .
5. In the Introduction section, label the new receive connector and select *Custom* . Click *Next* .
6. In the Local Network Setting section, type the *FQDN* name to be used for this *Receive Connector* . Click *Next* .
7. In Remote Network settings, we must add the internal network and click *Next* .
8. In the New Connector, a listing will be displayed, click *New* . (Figure 8)

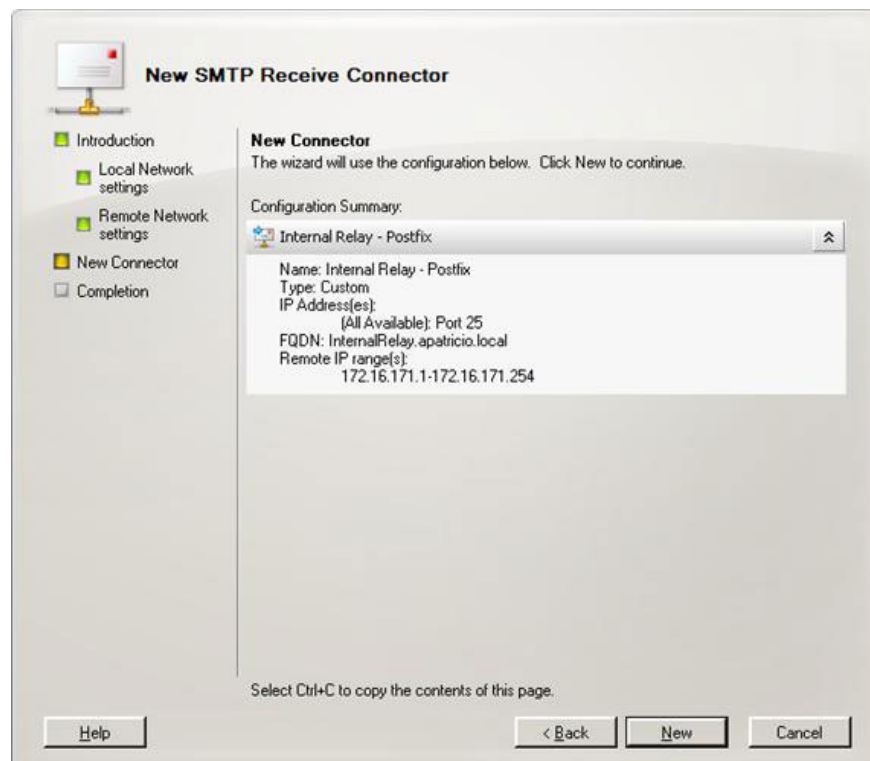


Figure 8: End of a new receiver that all internal clients will use

If your current environment allows internal users to send messages through the Linux box, we must enable Anonymous users in the new Receive Connector. To do that, check Anonymous users on the Permissions Groups tab (Figure 9).

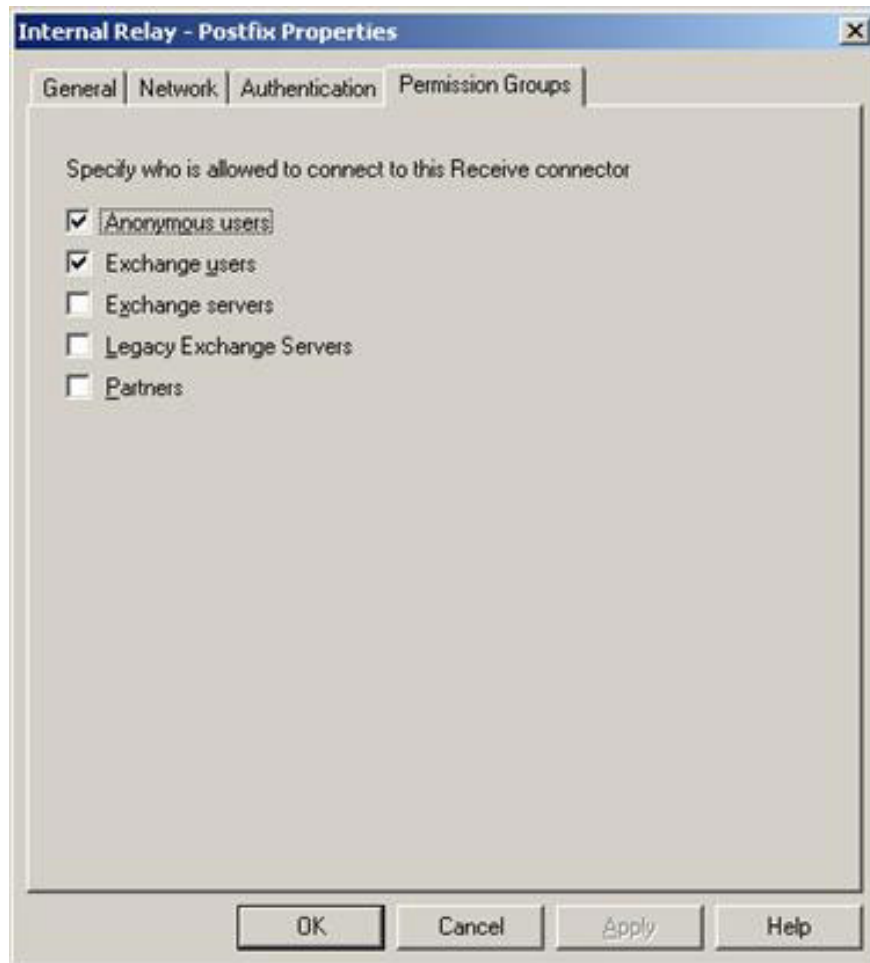


Figure 9: Allow asynchronous users (Anonymous users) to send messages through the receive connector inside.

The last setting to perform in the new Receive Connector is to allow the internal clients to send Internet messages via the new connector (Figure 10). By default, Windows Server 2007 will allow only internal domain forwarding. Internal users cannot send messages inside, to change this behavior we need to run the following command:

Get-ReceiveConnector * Internal * | Add-ADPermission -user 'NT AUTHORITY\ANONYMOUS LOGON' -ExtendendRights ms-Exch-SMTP-Accept-Any-Recipient

Note :

The name of the Receive connector is '*Internal Receive Connector*'.

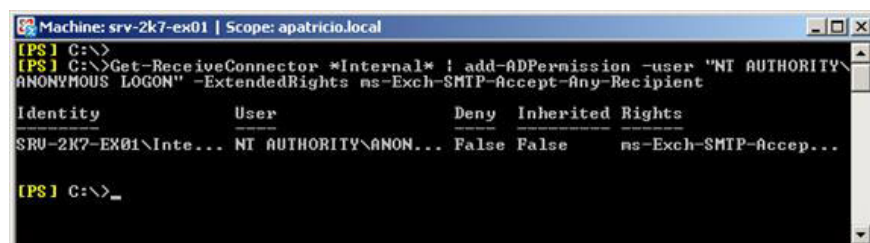


Figure 10: Adding ms-Exch-SMTP-Accept-Any-Recipient to Anonymous users in the Receive Connector inside.

Now the part that validates the Receive Connector! Here are some tests to validate whether our internal client works well in a new environment:

1. Telnet 25
The FQDN next to 220 must be the name set during the Receive Connector, otherwise make sure the IP address range in the remote network settings contains the IP address of the host where we are performing the test.
2. Configure a computer with the Windows Server 2007 IP address in the SMTP configuration and send mail to recipients inside and outside the Internet. The process needs to work well.

If everything goes well, all users can send messages inside and outside. If you have other settings for sending mail like SMTP Authenticated or TLS, change Exchange Server 2007 so that it works exactly for your needs before changing the environment.

Conclude

In this article, I have shown you how to update user properties and configure some Windows Server 2007 components to work with the current environment. In the next part of this series, we will introduce the final steps in moving between messaging systems and installing Microsoft Outlook on workstations to convert user data from internal to base. Exchange data.

You finished reading the article "**Transfer from Linux Mail Server to Exchange Server 2007 (Part 3)**" edited by the [TipsMake](#) team. We hope this article has provided you with many useful tech tips and tricks. You can search for similar articles on tips and guides. Thank you for reading and for following us regularly.