

Tracing 'guys' makes Windows boot slowly

Windows 'slow-to-turtle' booting process can sometimes originate from hardware such as a hard drive failure, however, the programs installed on the computer at the same time as Windows are the main cause of the problem this. Hopefully the following article can help you overcome Windows slow startup status.

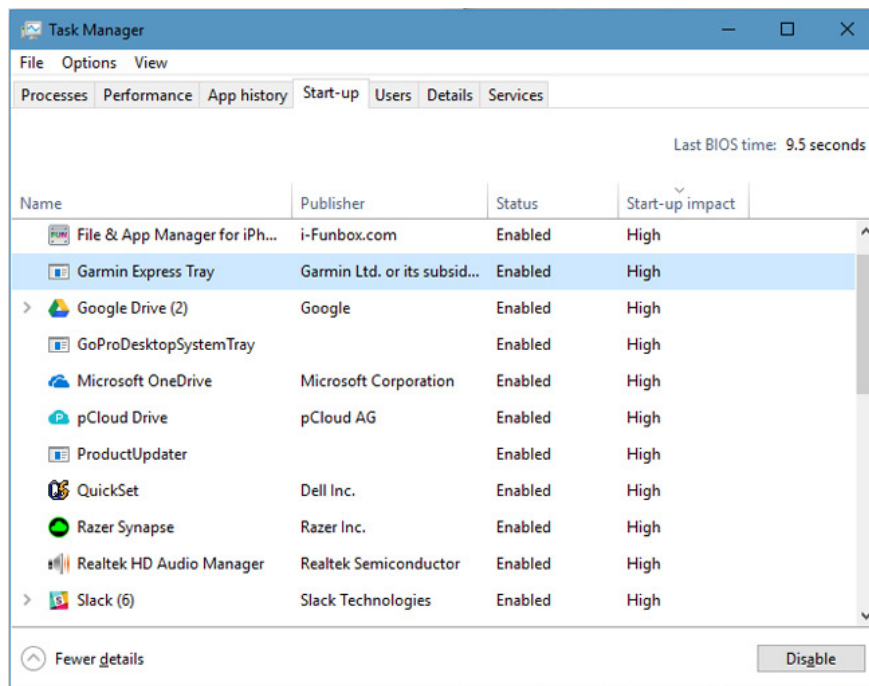
Windows 'slow-to-turtle' booting process can sometimes originate from hardware such as a hard drive failure, however, the programs installed on the computer at the same time as Windows are the main cause of the problem this.

Normally after installing Windows, you will have to install more programs to use, many of which automatically add to the startup list with Windows without your knowledge. So when you see that Windows starts up slower than usual, you should find out *who* 'who' has been causing this slowness? Here's how to maximize Windows boot time with the built-in tool.

1. Speed up Windows startup

Windows 10

Press **Ctrl + Alt + Delete** or right-click on the task tray, select **Task Manager** .

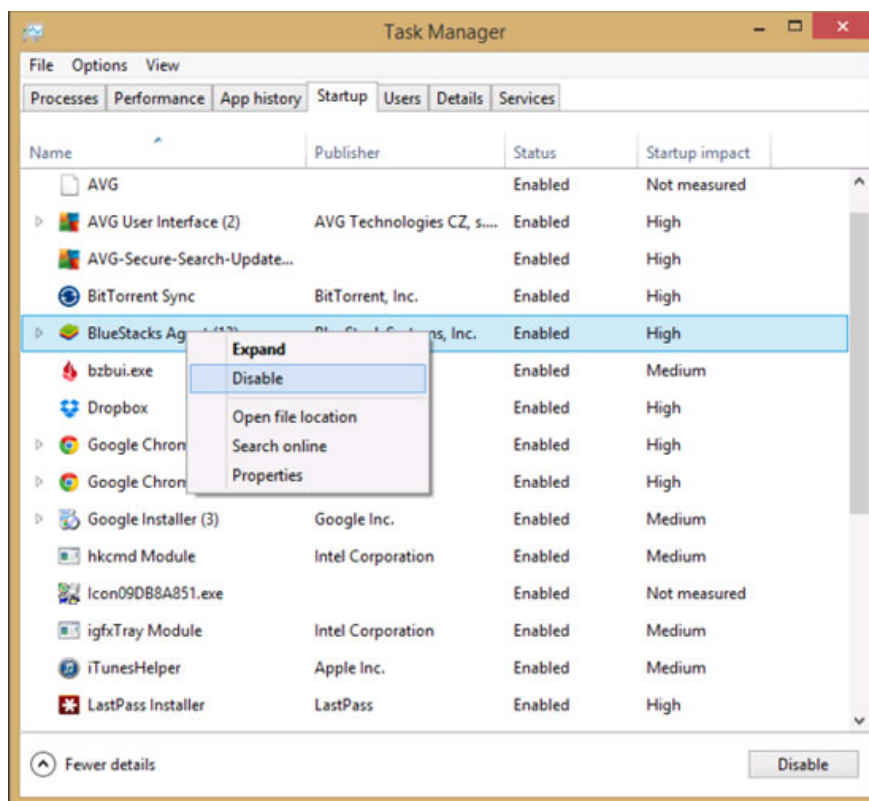


If you're not a long-time user or knowledgeable about tasks and processes on your computer, you'll probably need Google help to decide which applications to turn off. Often not the system's services, you can turn off startup mode with Windows to save boot time. Pay attention to the **Start-up impact** column, which applications to **High** can consider to not start with Windows, by right clicking on it, select **Disable** .

Windows 8.1

Similar to previous Windows versions, the *Task Manager* function remains on **Windows 8** but has been redesigned to the interface and offers more features. In particular, it is necessary to mention the features of managing software that starts with the system. To access the *Task Manager*, press **Control + Alt + Delete** on the keyboard, then select **Task Manager** in the options that appear.

If you are in the *Start* screen, you will be switched to the desktop interface. Inside the *Task Manager* window , select the **Startup** tab. There will be a list of programs that will start with Windows.



Notably, the **Startup impact** column, this column will show most exactly which programs affect the software's startup speed for the system and is classified into 4 groups including **High**, **Medium**, **Low** and **Not Measured** . In particular, it should be noted that the programs are rated high (*High*), which will be programs that need to consider disabling them.

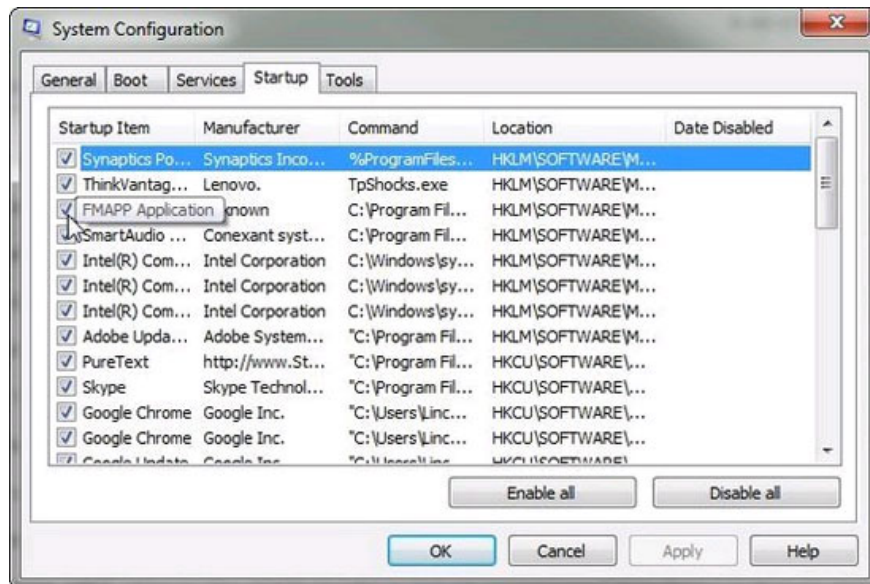
The choice of disabling or retaining a startup program with Windows is not difficult and depends mainly on the needs of each individual. Examples include programs like *Google Chrome*, *Google Music Manager*, *BitTorrent Sync*, *MP3 Skype Recorder* or *BlueStacks*. . are programs that you do not always have to use, while they are high priority (*High*) when booting with Windows, so it is understandable when they make Windows boot slowly

significantly more than at the beginning.

But more importantly, you can't disable tools that work in the background of a hardware manufacturer like Intel or an antivirus tool.

Windows 7

The first thing that **Windows 7** users need to do is access **the Start > Startup menu** to see if third-party applications are capable of activating with Windows? If you see any program here that you don't want them to start with Windows, just **right-click on the program's name** and select **Delete** .



Another option is to access the list of programs that start with Windows through the **System Configuration** tool. To access this tool, go to **Start menu > Run** (or press **Windows + R** key combination) , type **msconfig** command in the empty frame and press **Enter** . In the **System Configuration** window that appears, select the **Startup** tab.

Unlike **Windows 8.1** , the approach to start-up programs on Windows 7 is less user-friendly and does not have information affecting the boot process. This really makes it difficult for less experienced users to choose which programs to disable and which ones to leave behind.

However, if you see programs like *Google Chrome* , *QuickTime* or *Skype* in the list, you can disable them by removing the option before the name of the program. This solution will prevent *'footprint' programs* from starting with Windows, which will significantly increase the time the system boots up.

You finished reading the article "**Tracing 'guys' makes Windows boot slowly**" edited by the [TipsMake](#) team. We hope this article has provided you with many useful tech tips and tricks. You can search for similar articles on tips and guides. Thank you for reading and for following us regularly.