

Touchpad and things you don't know

With laptops and netbooks, the touchpad is merely a substitute for a computer mouse. Of course it cannot be as flexible as a computer mouse, ...

With Scrybe, the touchpad on laptops or netbooks becomes more useful.

With laptops and netbooks, the touchpad is merely a substitute for a computer mouse. Of course, it cannot be as flexible as a computer mouse, in some cases, the touchpad will inconvenience users like when you are chatting or editing text and accidentally touching the touchpad causing the mouse cursor moved away.

Therefore, some people who use laptops or netbooks often disable the touchpad to use an external mouse. Currently, some newer laptops and netbooks equipped with touchpads support multi-touch, so the touchpad has become a bit more useful. However, some people still do not like the touchpad very much. If you are such a person, use the application called **Scrybe** to find that the touchpad that I have left behind for a long time is still worth using and maybe you will change the concept of the touchpad.

Scrybe is a program that supports Synaptics' touchpad used on most laptops from well-known manufacturers. When using Scrybe, you will be able to quickly access applications and websites or perform some simple operations like copy and paste by drawing on the corresponding touchpad drawings.

Setting

Before installing Scrybe, download and install the Synaptics Pointing DeviceDriver application to match the version of Windows you are using **here** . When the installation is complete, restart the system for the changes to take effect.

The *Synaptics Pointing Device Settings* dialog box appears when you restart Windows. If you don't want it to appear later, uncheck the *Show this screen at startup section* .

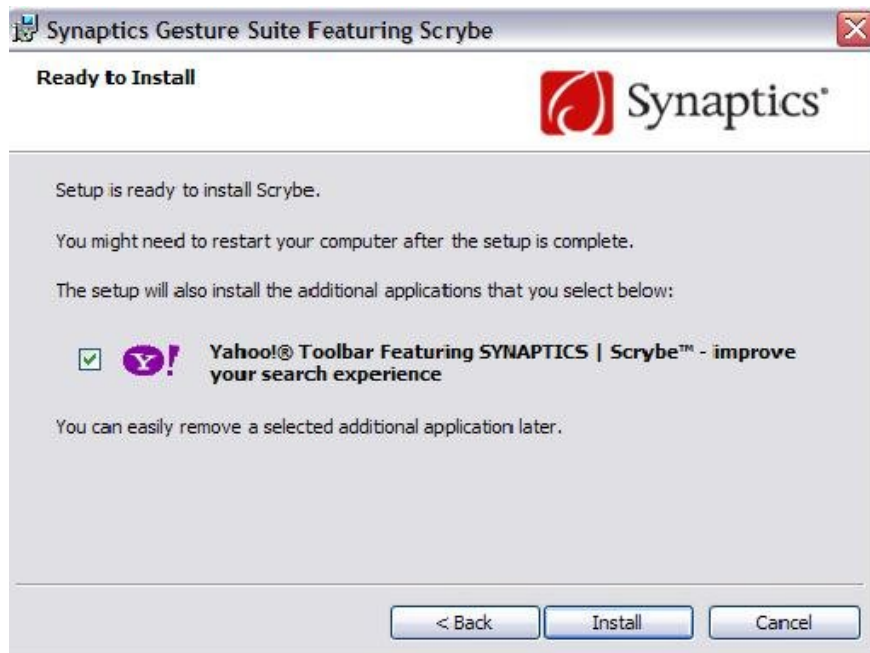


Next, do the Scribe installation. You can download Scribe [here](#) .

Click on the **Yes** option , **I want to help improve Scribe** .



If you want to use Yahoo! Toolbar, please click on the *Yahoo! Toolbar Featuring Scribe - improve your experience search* .



After installation is complete, restart the computer so that the settings are changed.

Use


You should see Scribe's arrow icon in the system tray, double-click it or right-click and select **Scribe Settings** . The interface of the program will appear as shown below.




In the left section, you will see drawings and icons that come with the respective applications. For a more general view of touch gestures on the touchpad, click on the **Gesture List** button to see all the drawings and icons as well as their features.


Symbol	Name	Symbol	Name	Symbol	Name	Symbol	Name
	Amazon		Amazon.com		Bing		Copy
	Cut		Document Editor		DVD		eBay.com
	Email Application		FaceBook		Finance		Google
	Music		My EMail		Paste		Photo App


To 'practice drawing' a certain icon, click on the corresponding image on the left then press Practice. When you draw correctly, the blue circle will light up, and if you draw not yet 'standard' the red circle will light up for notification.




Any key exits












Any key exits





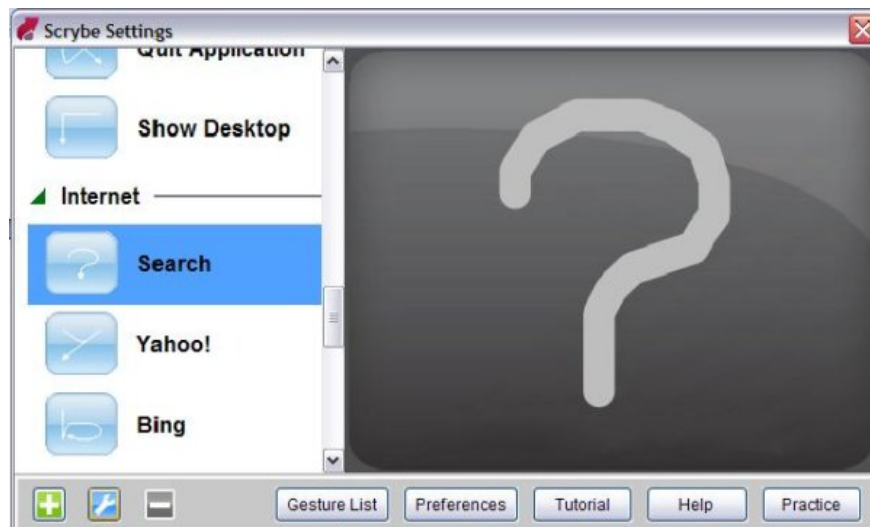


When you are familiar with Scrybe drawings, to use the program you can activate Scrybe by touching 3 fingers at the touchpad at the same time, a virtual touchpad will appear on the screen for you to draw on it. Another way is to press **Ctrl + Shift** and drag your finger on the touchpad to draw. If you draw correctly, the task corresponding to that image or icon will be executed. For example, to open yahoo mail, put 3 fingers on the touchpad and draw the @ symbol, the yahoo mail website will be opened.



Change default actions

Initially the program provides you with some of the icons available and you cannot change the icons and the drawings, you can only change the tasks performed as applications and websites open. . For example, if you want to change Scrybe's Search option from Yahoo to Google, open the **Scrybe Settings** dialog box and select the Search icon and then click the wrench icon.



In **Visit** section change options from *Yahoo* to *Google* .



Add new touch operation

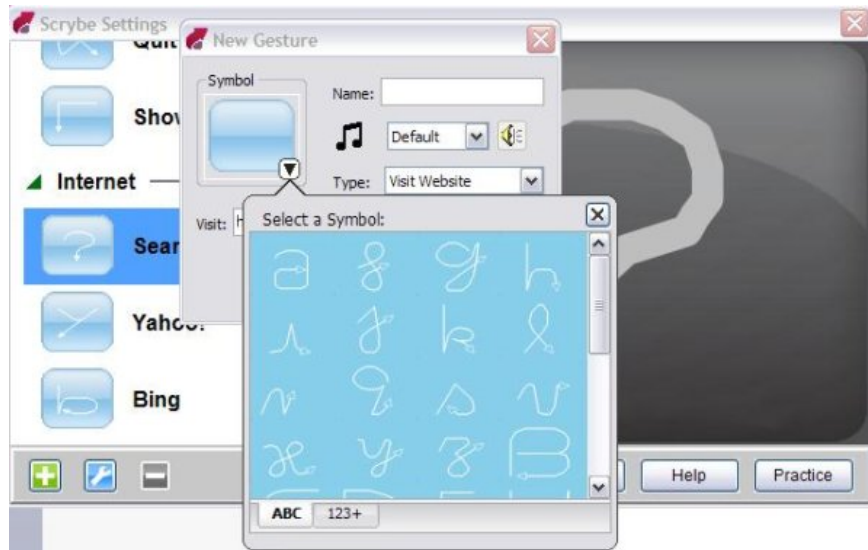
If you feel that Scrybe's options are not enough to satisfy you, the program also lets you add new graphics or icons to open your favorite websites or applications. To add new icons to Scrybe, click the blue plus icon, a dialog box will open as shown below.



Click on the **symbol** entry, there will be a list of icons and drawings to choose from. Type in a name for this icon in the name section. In the **Type** section, there will be options for this icon including: *Visit Website* to open a

website, *Launch Application* to open an application and *Shortcuts* to make shortcuts.

The following line allows you to type website addresses, application paths and shortcuts. After done, press **OK** to save the settings. So later to perform the task you want, you just need to draw according to the corresponding icons or drawings. If you are not satisfied and want to delete an additional task, drag the mouse on the corresponding image and click the red minus button to remove it from the list.



You finished reading the article "**Touchpad and things you don't know**" edited by the [TipsMake](#) team. We hope this article has provided you with many useful tech tips and tricks. You can search for similar articles on tips and guides. Thank you for reading and for following us regularly.