

Top 10 tips help you determine the behavior impostor in Among Us

In Among Us, you must pay attention to all registration behavior to identify imposters. These 10 tips will make you look like Sherlock Holmes wherever you are.

Innersloth's murderous mystery party game brought a lot of fun to players during the pandemic. The game takes place in an isolated space, with real people playing the role of teammates and impostors. **Among Us**'s main pillar of the game is Impostor, where there will be 1 to 3 fake teammates trying to break the mission in any given match.

Who is Among Us an impostor?

The Impostor is a player who tries to get rid of the crew, silently murder everyone and use dissonance to protect himself. This is the most fun way to play the game, due to the adrenaline and mishaps, and many players just want to play the impersonator every match.

Is it possible to choose to become an impostor?

There is no way for a player to choose to be an impostor. If you think about it, it doesn't make sense if you could be an impostor just because you wanted to. However, just because the game randomly chooses someone as an impostor doesn't mean there are no tips, strategies, and instructions to help you get through the struggle of finding out who they are among players. Because of the game's nature, there are actually a variety of ways to pick out suspicious behaviors that can help you find a sneaky spoiler each time.



Here are the 10 most common impostor behaviors you should keep in mind as a crew member:

1. Forged work

Among Us's impersonator will often pretend to perform the duties of a crew. The first step of a high IQ impostor is to do a fake mission. Only teammates can complete missions, while impostors do so while other players are around in disguise. They stood on a mission position and waited for a while.

The missions take some time to complete, so if you notice a player standing nearby and leaving very quickly, you should probably go look for the emergency button.

2. Follow "clean" players

Once at the emergency meeting, charges and defenses begin to fly. Some would say that a player cannot be an impostor because he was on a mission with another crew member on the other side of the killing site. They are protected by the logic of truth, theoretically.

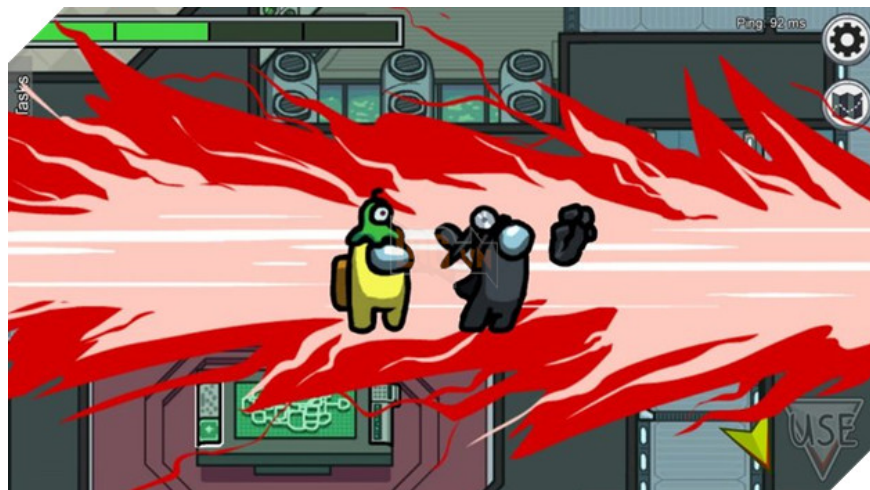
Other crew members said the pair was "pure", raising suspicions about the rest of the team. These 'clean' players will most likely be the next target for impostors to reduce the actual number of teammates. Follow these players who might reveal the impostor when they come looking for them next.

3. Protect people and avoid accusations

You can usually identify a good impostor if they follow the following two rules: defend all defendants (create confusion); not accuse anyone (accusing an innocent person of being kicked out of the house will attract all attention to the impostor).

4. Prefer Tie to Eliminate

Usually a good strategy for impostors to save an innocent player from disqualification. They will try to create a bond between the two crew members, and they will continue to push for the same thing next time. The crew members will waste the meetings while impostors slowly eliminate them one by one.



5. Take advantage of crowding

When at least four players were in the same place and one of them was killed, it was difficult to determine who the killer was. Cunning impostors often use this tactic. If that happens away from you, keep an eye on everyone who was in the same environment.

6. Vandalism and ignorance

Impostors can use a confusing tactic, such as early in the game, they can destroy a reactor. Many players will gather at the same place to perform the task.

Pretend you're running to fix the reactor next to them, by waiting a few seconds while everyone is on the mission. See if someone else is nearby and don't reactivate the reactor. Of course, the impostor would pretend surprise.



7. Move around a little too fast

On the larger maps, all players' movement speeds are the same. The propellers have the advantage of being able to move quickly using ventilation ducts.

If you had crossed the street with a crew member and soon after a body was reported, and that member claimed that they were on the other side of the map, with confirmation from another crew member, Chances are you found an imposter.

8. Close the door

A crew member really has no reason to shut down on the map. If you see a crew member closed, especially in places with ventilated entrances, be suspicious. It was a simple impersonation tactic, but many people remained closed to isolate teammates.

9. Disappeared without a trace

If you see someone entering the room, you follow them and find another body on the floor. The person you see entering is a fake and is escaping or escaping the ventilation duct.



10. Fear of the camera

On the map, there are a number of scattered cameras that can be seen by teammates. Looking at the camera, you notice that some crew members never cross this stretch of road. In that case, be wary as good imposters avoid these areas so they won't be seen killing anyone.

You finished reading the article "**Top 10 tips help you determine the behavior impostor in Among Us**" edited by the [TipsMake](#) team. We hope this article has provided you with many useful tech tips and tricks. You can search for similar articles on tips and guides. Thank you for reading and for following us regularly.