

Tips to optimize Internet connection speed from Linksys

Maximizing Internet speed is essential to optimizing your network connection. You can have the best entertainment and working experience when using computers, Internet-ready TVs, game consoles, etc.

Maximizing Internet speed is essential to optimizing your network connection. You can have the best entertainment and work experience when using a computer, an Internet-ready TV, console games, media player and more devices, when your wireless connection works at the maximum. Here are the ways you can do to speed up your Internet connection.

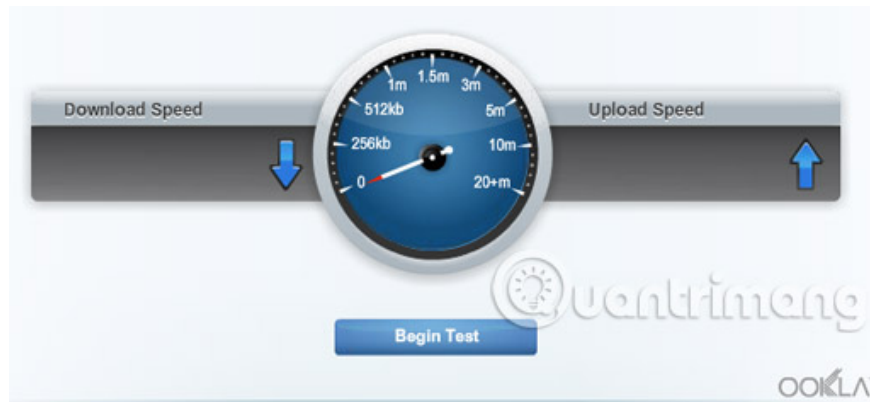
Learn about optimizing Internet connection speed

1. Run a speed test on your network
2. Check the compatibility of wireless adapters and routers
3. Set the appropriate MTU size for the network
4. Change your wireless channel
5. Optimize your computer and network
6. Expand your wireless network range

Run a speed test on your network

Linksys' Smart Wi-Fi Router has Speed Test Tool - an integrated speed test tool that allows you to check the current upload and download speeds of your current Internet connection. It shows how fast the information is downloaded from the Internet to your computer, and how fast it is transferring information from your computer to another site. You can perform speed testing on your network with the Linksys cloud account.

NOTE: You can also check the computer's wireless connection speed.



You can then compare the Internet speed test results with the standard router throughput to see if you get the optimal wireless connection. Throughput - Throughput is the amount of data actually transferred successfully in the network at a given time.

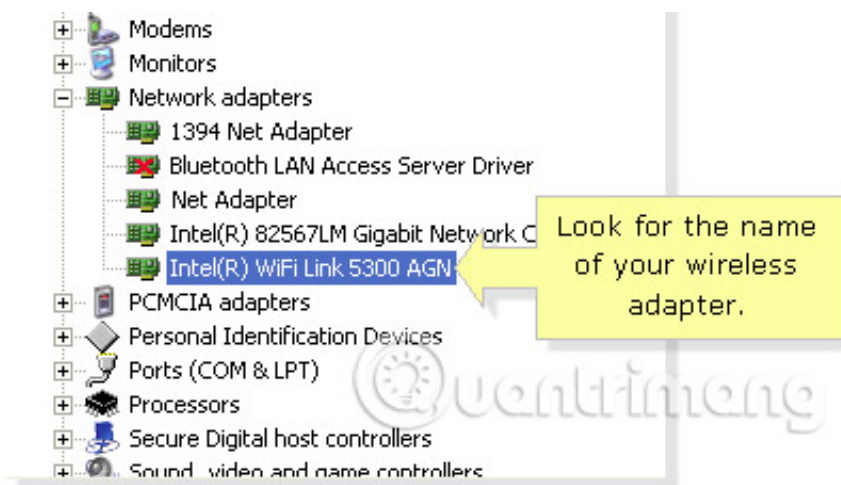
NOTE : Your actual Internet connection speed and performance will depend on your Internet Service Provider (ISP).

Check the compatibility of wireless adapters and routers

The device's wireless adapter and router compatibility are one of the factors that affect your wireless connection.

For best results, the Wireless-N router must be paired with the Wireless-N adapter, just like the Wireless-G routers are paired with the Wireless-G adapter. If there is a combination of Wireless-G adapter and Wireless-N connection to the network, it is best to set the wireless network mode to **Mixed**. This will allow Wireless-G devices to have a stable connection to the network, and will allow the Wireless-N device to remain connected to the network but will operate based on Wireless-G speeds.

To maximize the wireless connection speed, check if your adapter is compatible with Wireless-AC, Wireless-N, G, B or A standards.



NOTE : Intel WiFi Link 5300 AGN is used in this example. Its suffix - **AGN** - means wireless adapter for this computer compatible with Wireless-A, B / G and N.

Set the appropriate MTU size for the network

Maximum Transmission Unit (MTU) - Maximum transmission unit - specifies the maximum packet size allowed to transmit over the Internet. Determining the appropriate MTU size is important to get the most effective throughput for the network.



Optional Settings
(required by some Internet
Service Providers)

Host Name:

Domain Name:

MTU:

NOTE: The MTU 1480 size is used here as an example.

Change your wireless channel

The need to change the router's wireless channel may occur when you experience interference. Interference is one of the most common problems that your home network may encounter, and interference can be caused by the following:

1. Indoor electronics (cordless phones, speakers and microwave ovens)
2. Nearby wireless networks
3. Physical obstacles (walls, mirrors or glass)
4. Distance or location

These factors can reduce your network performance. Changing channels is one of the best ways to keep signals constant and optimize your wireless connection.

Linksys dual-band routers are capable of transmitting and receiving data using both 2.4GHz and 5GHz frequencies, simultaneously or one at a time. The 2.4 and 5GHz Wi-Fi signal range is divided into a number of smaller strips called wireless channels. Each wireless channel translates to a radio frequency (for example, channel 6 is 2,437GHz).

Optimize your computer and network

Help your computer avoid free viruses, malware and adware by visiting secure websites, using fast browsers, cleaning up your hard drive regularly and making sure your computer works normal action. No matter how fast the Internet connection is, it doesn't make sense if your computer is working poorly.

You should install the updated driver for the adapter to connect better. Update your network adapter driver to improve its functionality. Updating the router allows it to keep up with modern Internet traffic.

Expand your wireless network range

The location of your device and wireless router will affect the performance of the wireless network. To increase the wireless signal, you should put the wireless router in the center of the house or in a location where there are no obstacles that can interfere with its range (such as furniture, appliances too high).). They will block the signal or shorten the range of your wireless network.

You can also add other devices such as switches or range extenders to your existing local network. With this, you can expand the range of wireless networks, as well as enjoy more online activities to keep up with the trend.

See more:

1. Speed up network and Internet access
2. Optimize broadband connection speed
3. Speed up Internet connection on Windows 10 computers

You finished reading the article "**Tips to optimize Internet connection speed from Linksys**" edited by the [TipsMake](#) team. We hope this article has provided you with many useful tech tips and tricks. You can search for similar articles on tips and guides. Thank you for reading and for following us regularly.