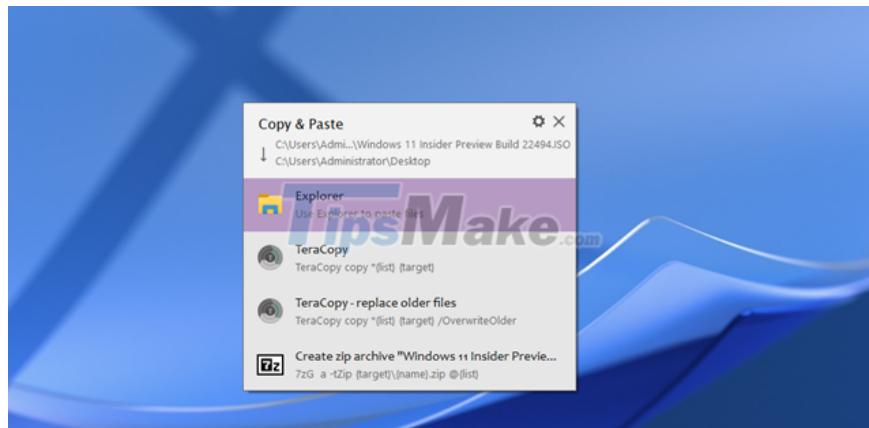


Tips to help double the speed of copying data on Windows

When you perform a large data copy/move task on Windows, the hard drive will have to access it continuously, affecting the performance of the entire system.

In addition, the hard drive is not always in a state of maximum read / write speed, so it will take a long time to copy large data.

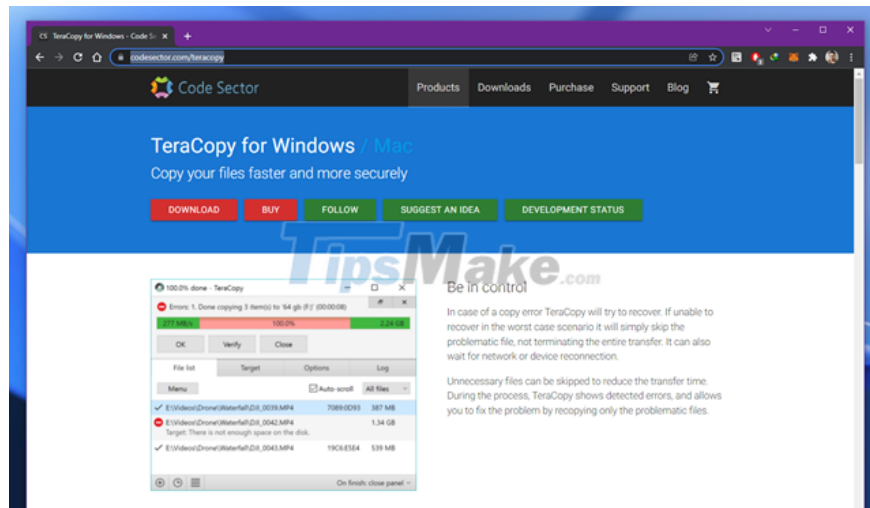
Even on some computers with weak configuration, when copying large data, there will be a crash, or the data after copying is corrupted and cannot be used.



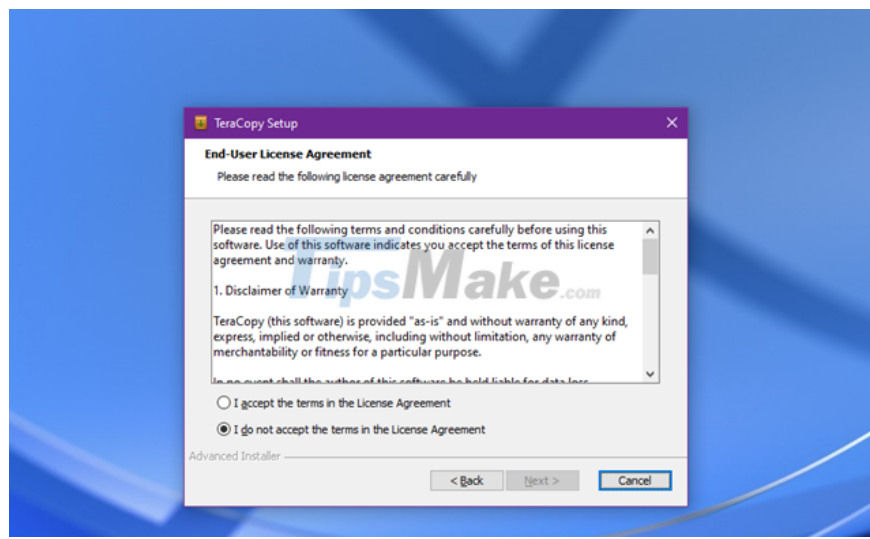
Nowadays, SSD hard drives with faster data read / write speeds have become more and more popular, making the process of copying data on computers faster. However, not everyone has the conditions to upgrade the computer's hard drive to an SSD, or if you are using an SSD but you still want to make the data copy process faster, what to do?

This article will introduce readers to TeraCopy, this free software for automatically optimizing and speeding up data copying on your computer, saving you time. In particular, TeraCopy has a mechanism to use cache on the hard drive, which helps the data copying process not affect the performance of the computer, especially the computers with weak configuration.

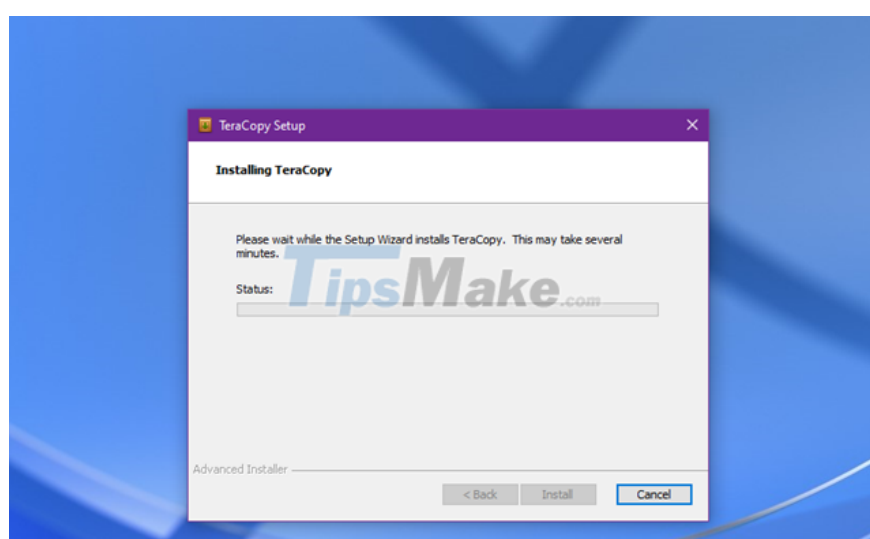
How to install and use TeraCopy to speed up copying/moving data on Windows



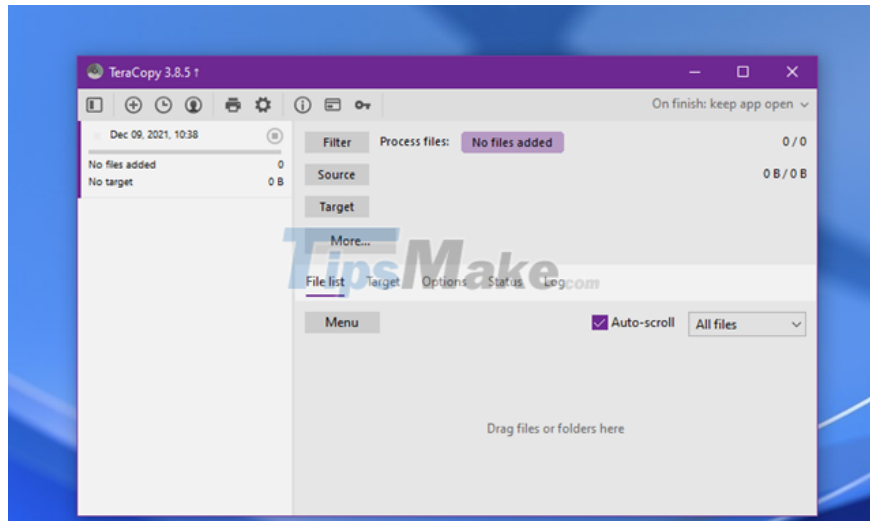
To get started, visit [this site](https://codesector.com/teracopy) to download the latest version of TeraCopy.



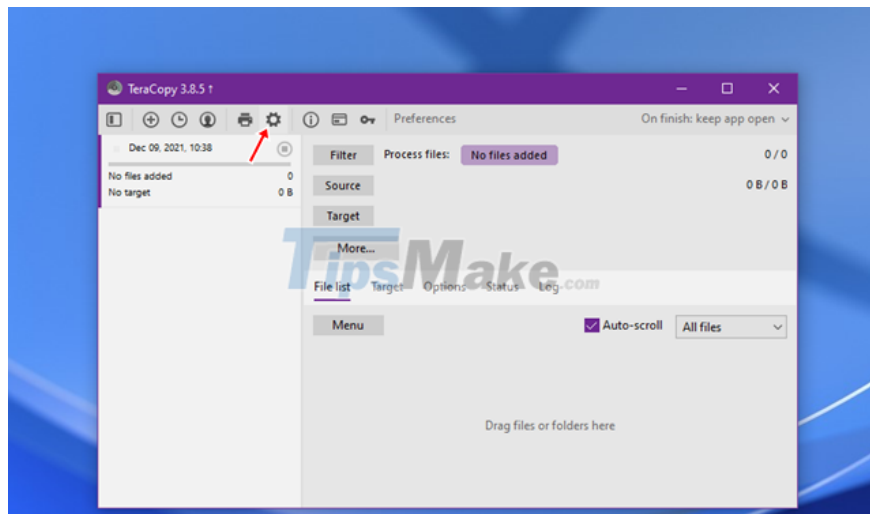
After the download is complete, proceed to install TeraCopy on Windows.



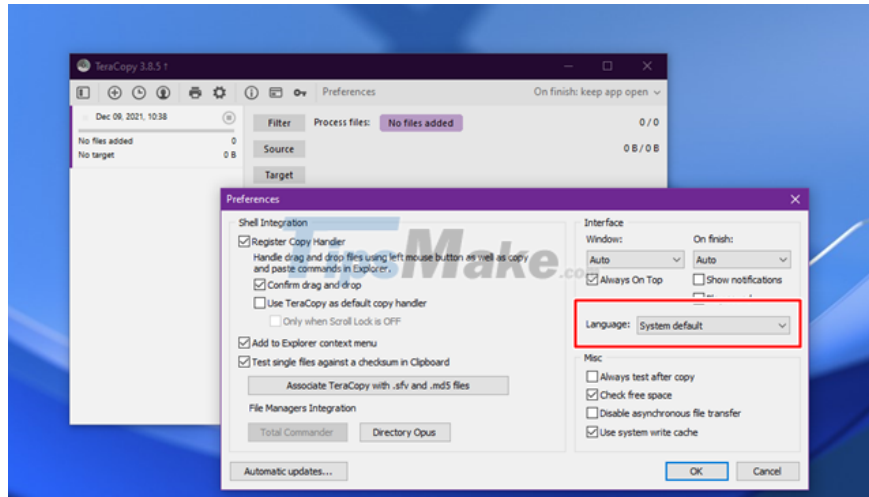
TeraCopy installation configuration process is quite simple and does not "attach" other software even though it is free.



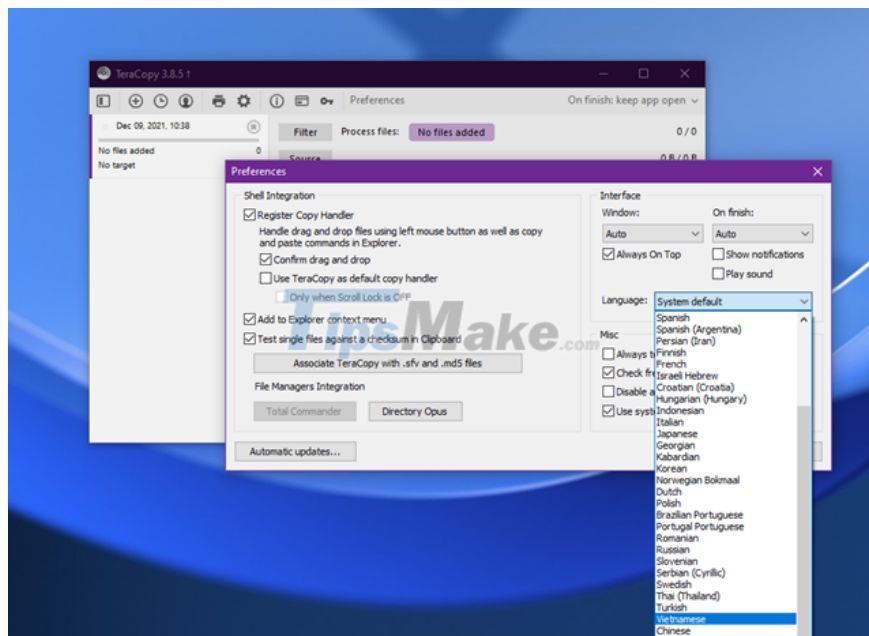
TeraCopy main interface.



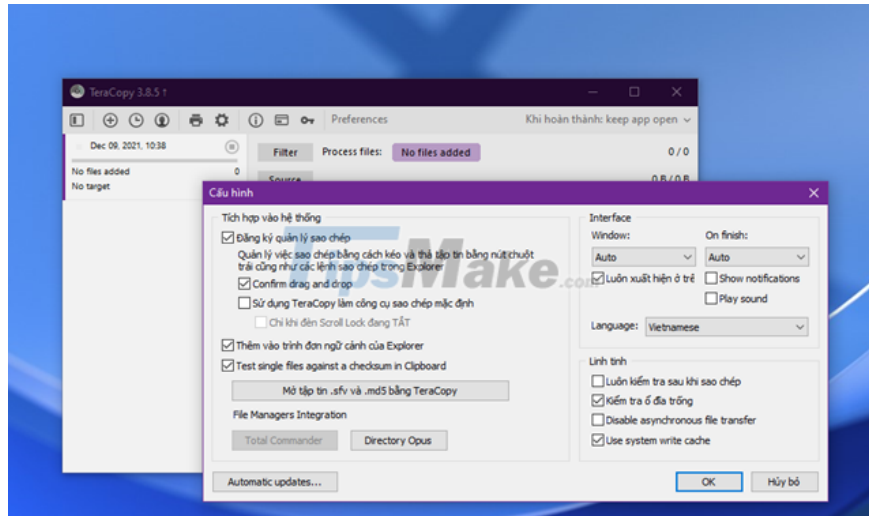
By default, TeraCopy will display the English language, but if you like, you can switch to Vietnamese because the software itself supports Vietnamese. To switch languages, click on the gear icon (Settings) in the software interface.



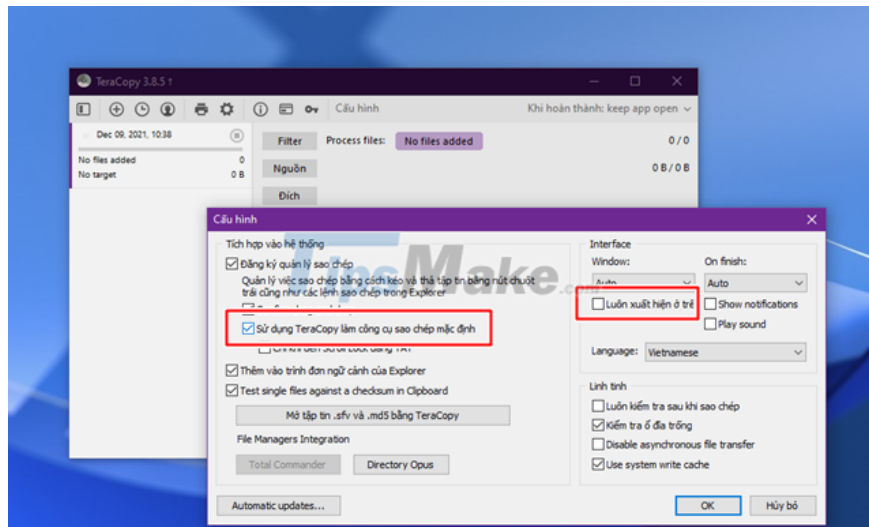
Click on the option in Language.



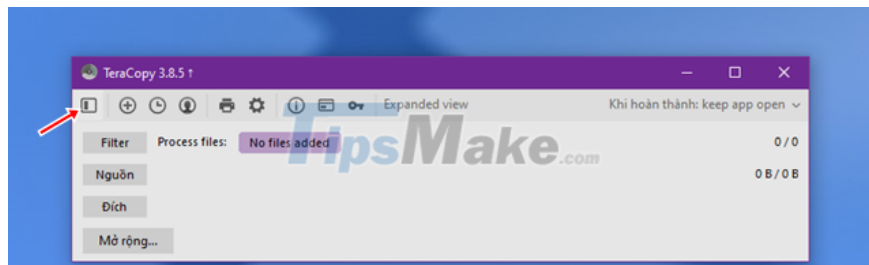
And select "Vietnamese".



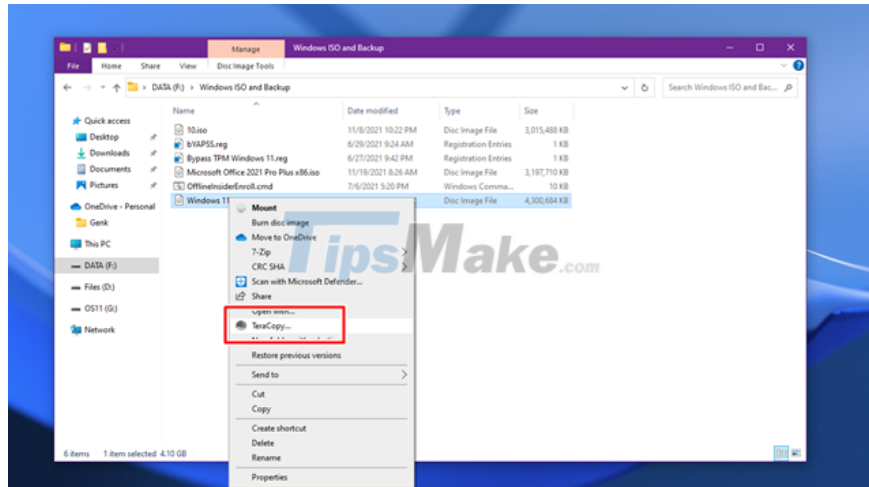
The change will take effect immediately.



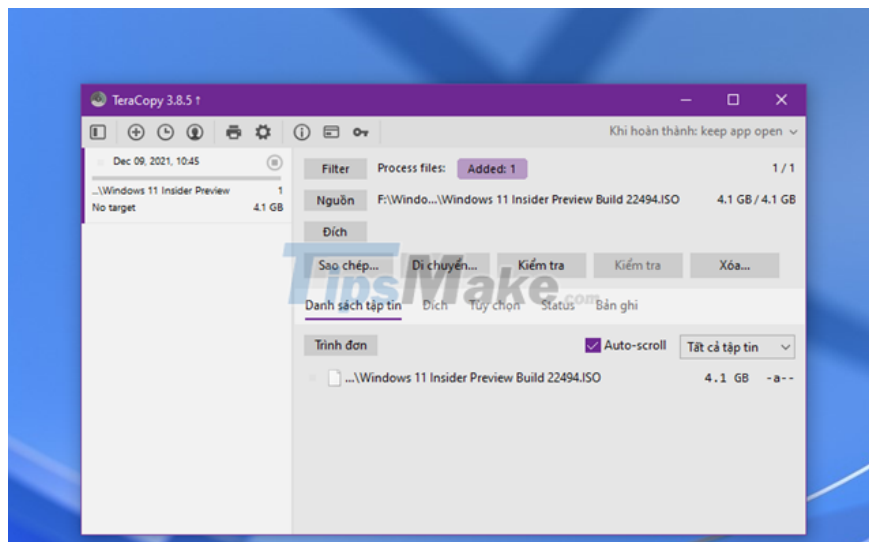
Also, in this settings dialog, check the "Use TeraCopy as default copy engine" option and then click "OK" to save the settings.



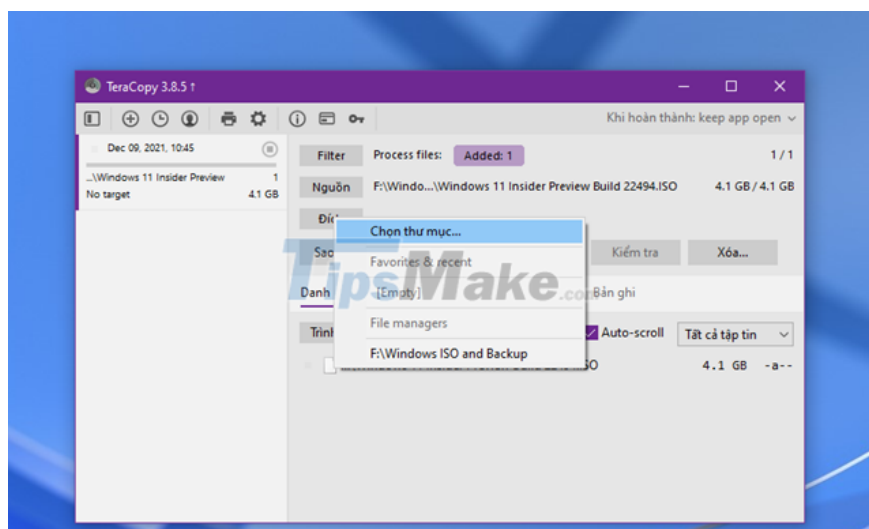
If you want to shrink the TeraCopy interface, click on the icon as shown.



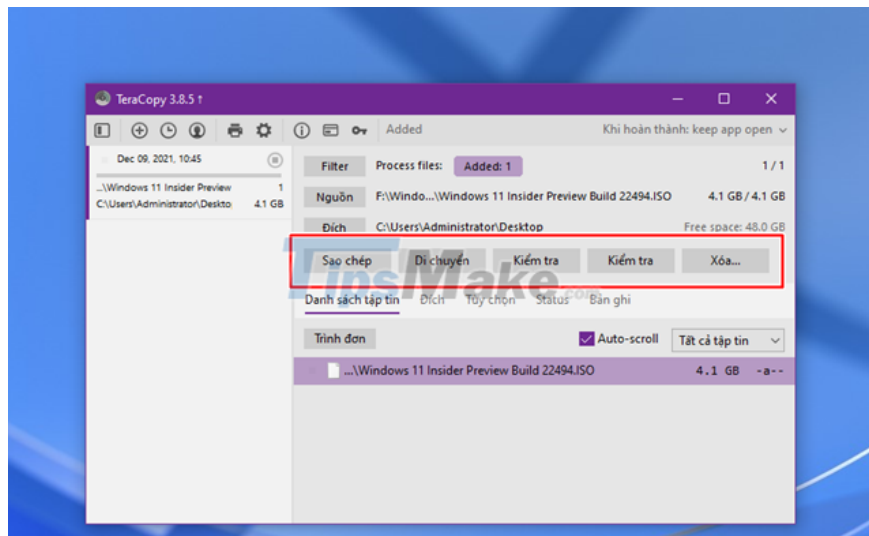
To copy/move data using TeraCopy, right-click on the data and select "TeraCopy." in the menu.



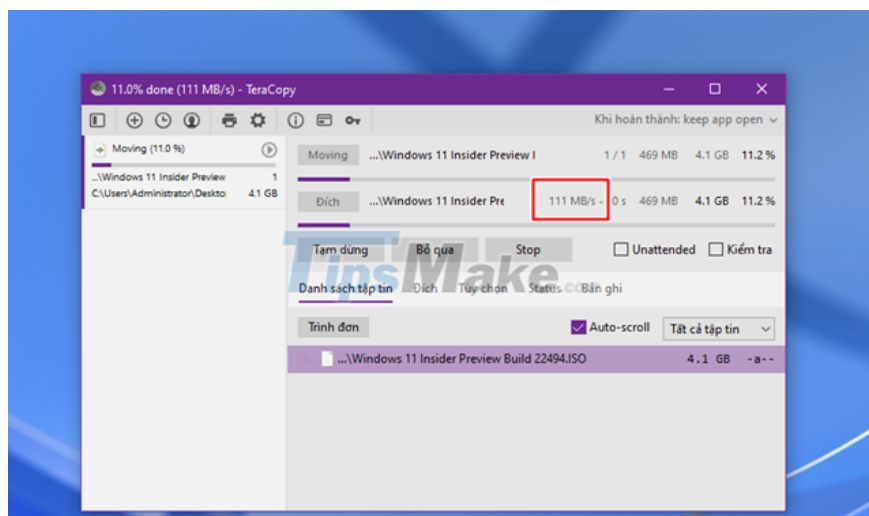
The interface of TeraCopy will appear, displaying full details about the data copying process. If you want to choose where to store the copied/moved files, click "Destination".



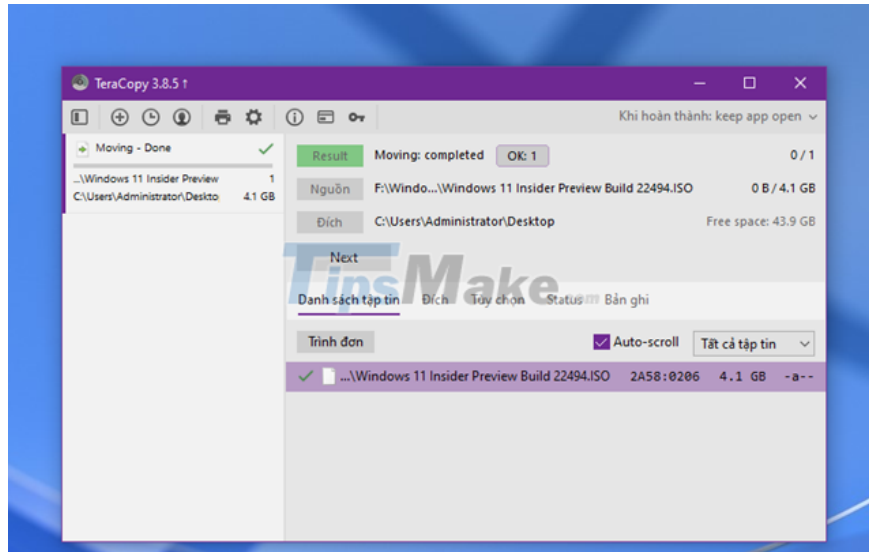
And choose the location you need.



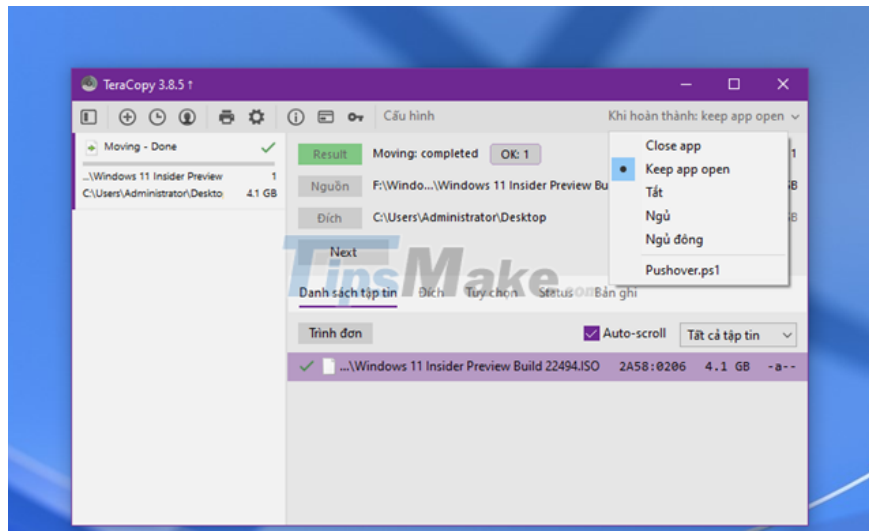
Once you've made your selection, tap the action you want to perform.



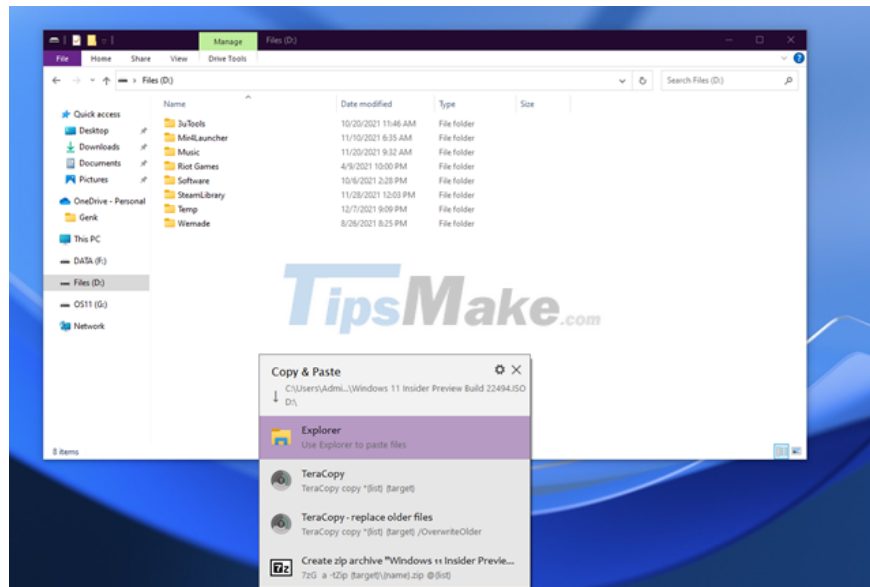
You can easily realize that the speed of data copied with TeraCopy is many times faster than using the default Windows function.



After completing the task, TeraCopy will display full details about the data copying process, such as the data copy speed, the number of files copied, which files are corrupted during the process. copy or not... if an error occurs during data copying, TeraCopy will also provide detailed error information, such as errors due to low hard drive space or corrupted data...



In addition, this software also supports you to perform system tasks after the data copy/migration is completed.



TeraCopy also offers the choice to use the default Windows copier or TeraCopy every time you move data.

Great, isn't it?

You finished reading the article "**Tips to help double the speed of copying data on Windows**" edited by the [TipsMake](#) team. We hope this article has provided you with many useful tech tips and tricks. You can search for similar articles on tips and guides. Thank you for reading and for following us regularly.