

# Tips to check if the computer can play the game?

The PC game market is becoming more vibrant than ever, with many new titles coming out with eye-catching graphics, complex gameplay that requires gamers to invest more effort. Not only that, it also requires increasing computer configuration. So what to do to know if the computer you are using can run certain games?

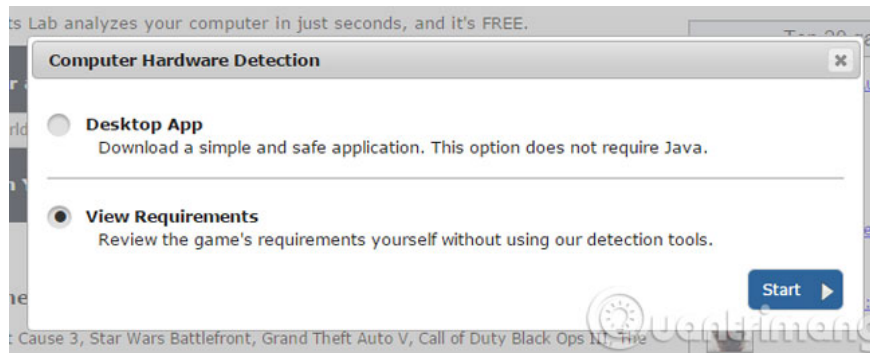
The PC game market is becoming more vibrant than ever, with many new titles coming out with eye-catching graphics, complex gameplay that requires gamers to invest more "effort". Not only that, it also requires increasing computer configuration. So how to know if the computer you are using has "run" certain games?

We will introduce you an online tool to test your computer configuration with a lot of different game titles.

**Step 1 :** Visit the homepage **Can you run it** , select the game you want to check in the **Search for a game** frame and then click **Can you run it** (example here, we choose **FIFA 2006** )



**Step 2 :** A message box pops up, select **View Requirements** and then click **Start** to go to the next step



**Step 3 :** In the new interface there will be 2 configuration tables

1. Minimal configuration for game play

**2006 FIFA World Cup Minimum Requirements**

<b>CPU:</b>	Pentium III/Athlon or better
<b>CPU Speed:</b>	1.2 GHz
<b>RAM:</b>	256 MB
<b>OS:</b>	Windows 2000/XP
<b>Video Card:</b>	32 MB DirectX 9.0c compatible (NVIDIA GeForce2 MX+ / ATI Radeon 7500+ / Intel 865+)
<b>Sound Card:</b>	Yes
<b>Free Disk Space:</b>	900 MB
<b>DVD-ROM:</b>	8X DVD-ROM (This game contains technology intended to prevent copying that may conflict with some CD/DVD-ROM, CD/DVD-RW and virtual drives.)

1. Configure the website suggested to play the game

**2006 FIFA World Cup Recommended Requirements**

<b>CPU:</b>	Pentium 4/Athlon XP or better
<b>CPU Speed:</b>	2 GHz
<b>RAM:</b>	512 MB
<b>OS:</b>	Windows 2000/XP
<b>Video Card:</b>	128 MB DirectX 9.0c compatible (NVIDIA GeForce FX+ / ATI Radeon 9500+)
<b>Sound Card:</b>	Yes
<b>Free Disk Space:</b>	2.7 GB
<b>DVD-ROM:</b>	8X DVD-ROM (This game contains technology intended to prevent copying that may conflict with some CD/DVD-ROM, CD/DVD-RW and virtual drives.)

**Step 4 :** Right-click **Computer** and select **Properties** to view your computer's configuration



As you can see above, our machine can play FIFA 2006, with other games you check in the same way.

**Good luck!**

You finished reading the article "**Tips to check if the computer can play the game?**" edited by the [TipsMake](#) team. We hope this article has provided you with many useful tech tips and tricks. You can search for similar articles on tips and guides. Thank you for reading and for following us regularly.