

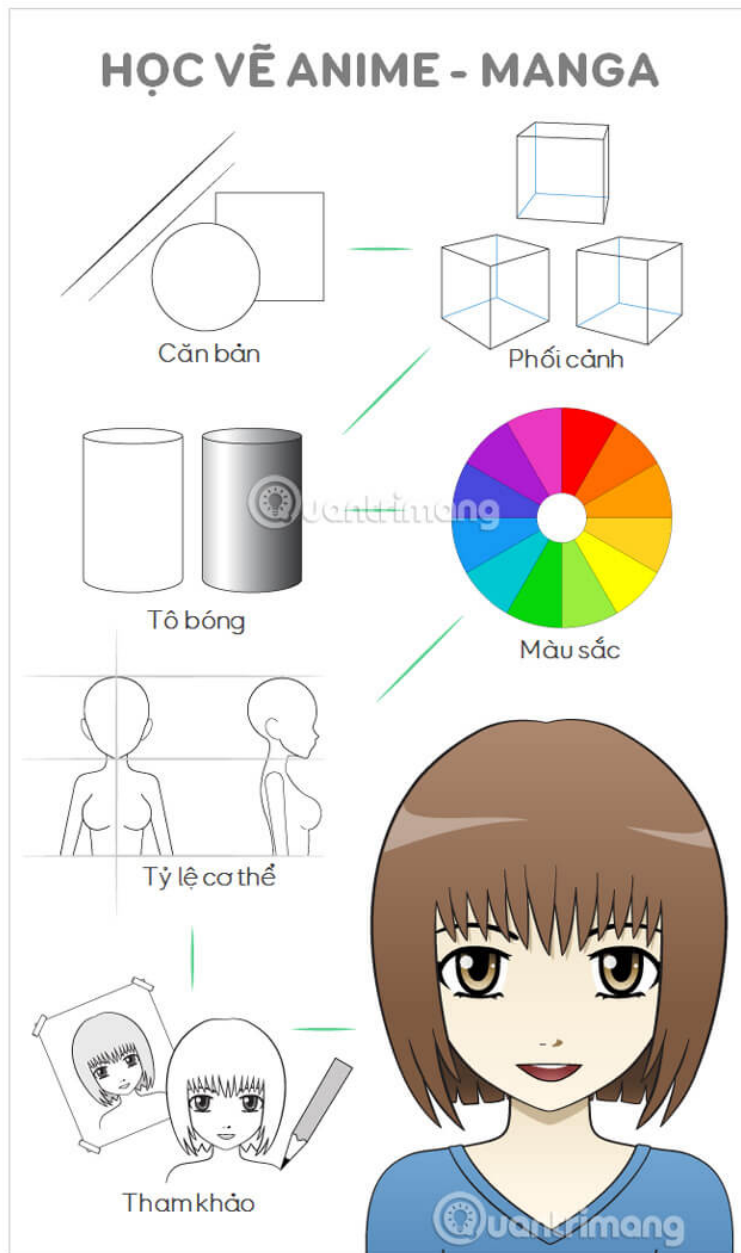
Tips for learning Anime and Manga drawing tips

You are a true fan of anime or manga, you want to learn, want to learn this creative drawing style but don't know where to start. Follow this article for a few tips and notes to find out when you want to go to anime - manga

You are a true fan of anime or manga, you want to learn, want to learn this creative drawing style but don't know where to start. Follow this article, TipsMake.com will give **you a few tips and notes to find out when you want to come to anime - manga** , as well as introduce detailed instructions for you to create a manga work. own.

If you are looking for advice on creating your own manga, you may be interested in the article:

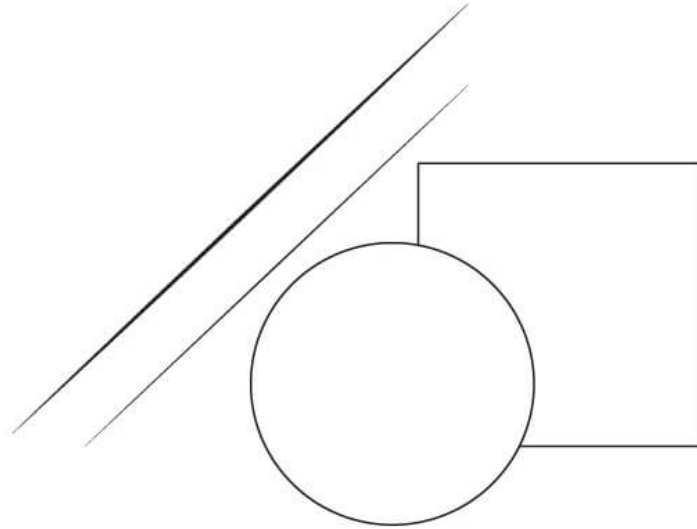
1. 9 steps to create your own Manga - Anime series



How to learn how to draw anime and manga

The illustration above shows some things you need to know to be able to draw anime and manga. We will go into each section in detail.

1. Learn the basics of art

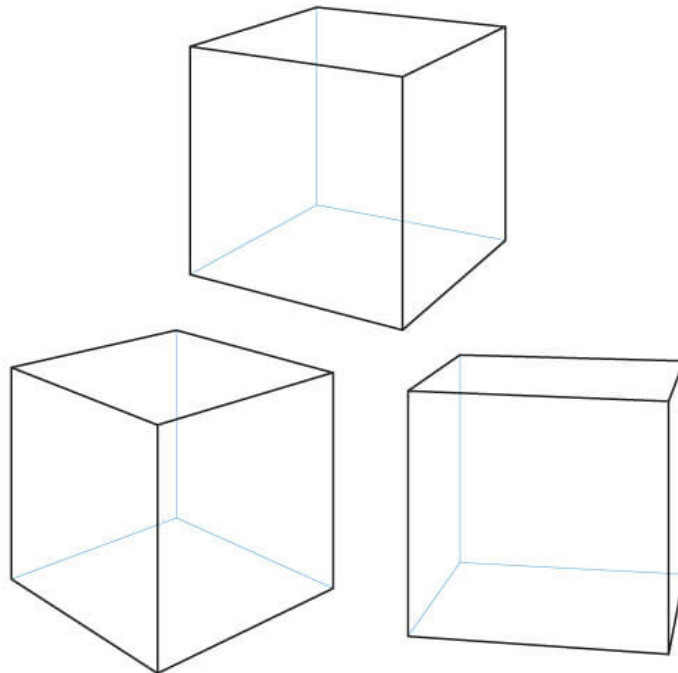


Learn to draw basic shapes

If you are a "newbie" in this area, you should **start with the basic lesson** . Practice with simple things like straight lines, basic shapes like circles, ova, squares . Being able to practice sometimes is a bit boring but this will help you improve a lot.

Practice with a few minutes every day, when you get used to it, you can draw it to other pictures, but other things will help you get bored. Well done, drawing anime is much simpler.

2. Learn perspective drawing

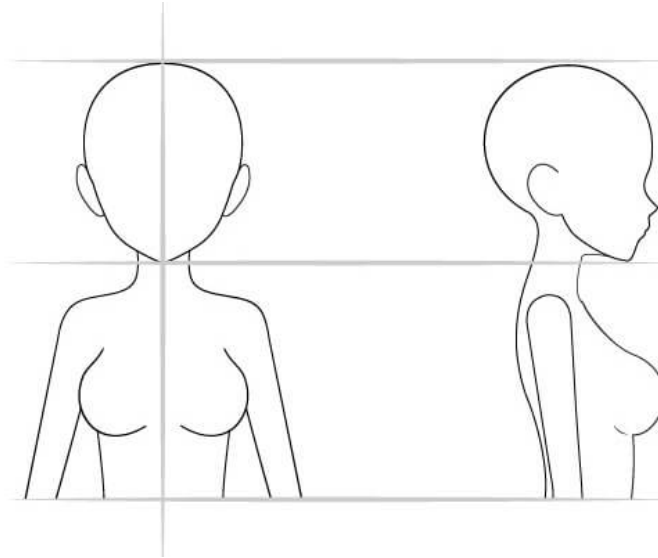


Example perspective drawing

Perspective is to bring a three-dimensional feeling, representing the way that objects appear small or larger; show feeling closer or farther. For example, when you look at a cube, the sides of the image are equal, but the ones that are farther away from your eyes will look smaller. The bigger the object, the easier it is to see it.

Perspective drawing will take advantage of this effect, depicting it accurately and practically. You can practice and practice by drawing shapes in three dimensions like cubes, rectangular, cylindrical shapes . from different angles. When mastered, this skill will help you a lot when embarking on drawing more complex figures as well as drawing anime characters in your work.

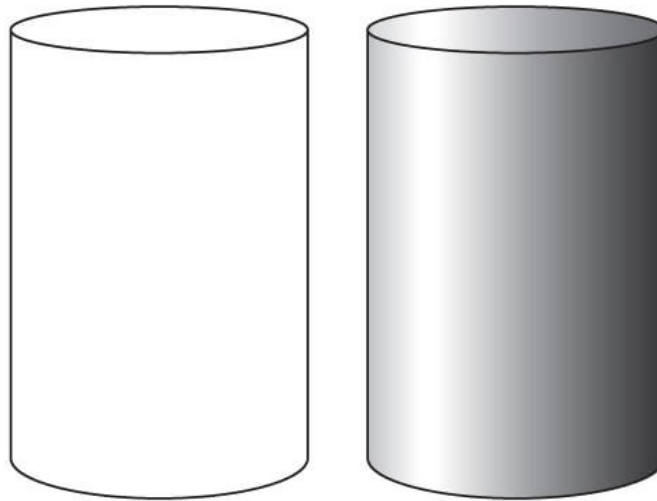
3. Learn the basics of the human body



Ratio of characters in anime, manga

Accumulating for yourself some body knowledge, human form will be very helpful to you in the process of drawing. You need to understand the proportions and positions of body parts to avoid making mistakes during the pen drawing process. For anime characters, the proportion of some parts may be larger or smaller than the real ones, but will generally be based on the real body to develop the work.

4. Learn how to polish, polish



The object is shaded when drawing

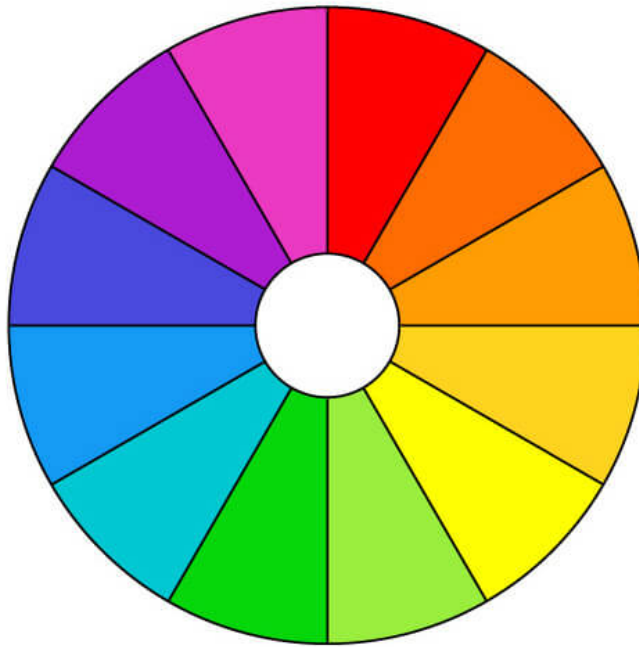
A properly polished work will **make you feel that this is a 3D picture** and not a 2D painting. To be able to polish properly, you should learn how light shines on different objects and surfaces. Do not forget to remember the most basic rule: the face facing the light source will be brightest, the brightest side will be darkest.

Polished correctly will contribute to showing the lighting conditions of the environment, time and time, even the weather is changing.

For example, if you draw a character outside on a beautiful sunny day, the character's shadow will be quite sharp and have a high contrast, clearly divided into bright and dark. On the other hand, if on a rainy day or a dense fog, the shadows will be quite blurry, difficult to recognize because of low contrast, bright and dark parts that are harder to see.

The shading technique used in the anime is greatly simplified, but still relies on real people and circumstances to develop.

5. Learn to use colors

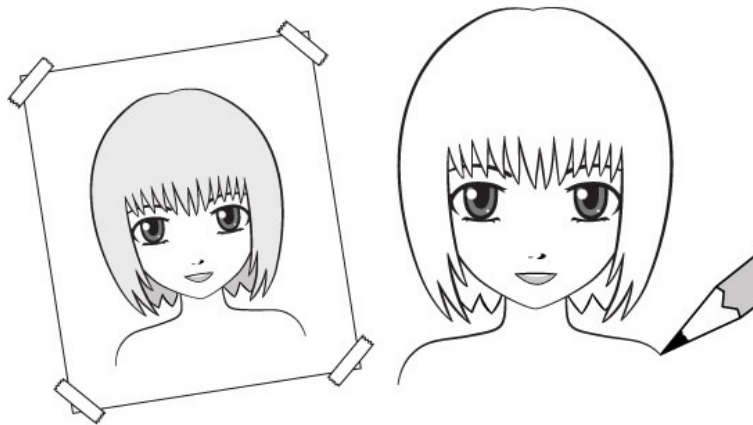


Color wheel (Wheel Color)

To be able to use colors effectively, you should **learn some basic theories such as hot colors, cool colors, complementary colors** , for example, hot colors are yellow, and cool colors are blue. You can look at the color wheel (Wheel Color) to remember which color is of any nature, which colors are opposite each other will be complementary to each other.

Using the right combination of colors, you can create an eye-catching and attractive anime character.

6. Use references when drawing



Use references when drawing

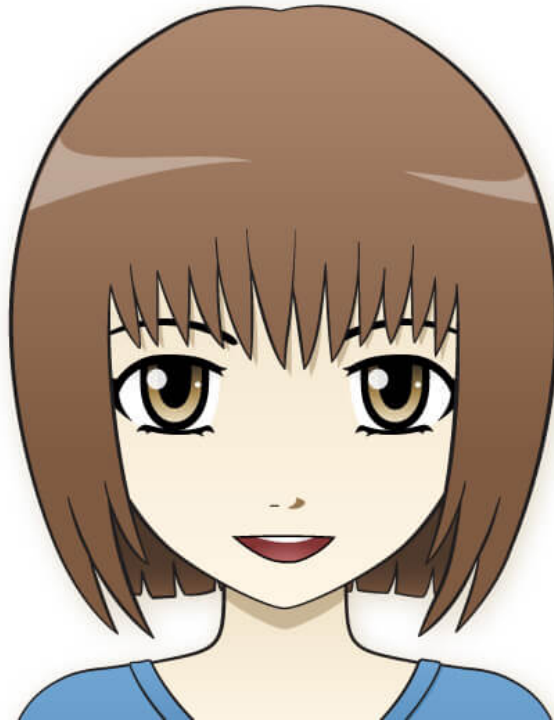
Whatever style you are drawing, it is best **to consult the materials at the beginning** , especially with "newbie". References can be photographs or real objects, people, animals .

Study the work of other authors to see how to draw anime, manga, learn styles and learn from them

For more tips on designing manga and anime characters, you can refer to:

1. 4 important steps for creating Manga characters - your own Anime

7. Be patient and don't give up



Girl drawing anime style

Learning to draw is really not easy . In order to produce a manga, anime requires a lot of time, effort and patience. But when you see your achievements and progress, you will feel your efforts are not wasteful.

Of course there will still be times when your work is not what you want, or you feel your progress is a bit slow. But don't let those moments frustrate you. Give yourself a break and try again the next day. Quantimang is sure that, if you work hard and really love manga and anime, there will be no difficulties in getting you to complete your own great works.

If you need inspiration, reward yourself with hours of watching some anime episodes, or reading a favorite manga. Inspiration will come from the moments you feel really comfortable.

Good luck!

You finished reading the article "**Tips for learning Anime and Manga drawing tips**" edited by the [TipsMake](#) team. We hope this article has provided you with many useful tech tips and tricks. You can search for similar articles on tips and guides. Thank you for reading and for following us regularly.