

This is how to hack Mario game 4 buttons to add hidden gameplay

Mario 4 buttons is a legendary electronic game for a while and probably still quite a lot of people passionate to this day. However, do you know how to open more secret screens that you never knew?

The 4-button video games once reverberated for a while, storming the market like Contra, Pac-man, Ninja Turtle games, and especially the legendary Super Mario Bros. how much sobbing the younger generation at that time. Everyone had lost their sleep with Mario in each stage of rescue, overcoming many pitfalls. However, can you be sure that you are the "boss" of this game when there are countless fascinating gameplay screens hidden?

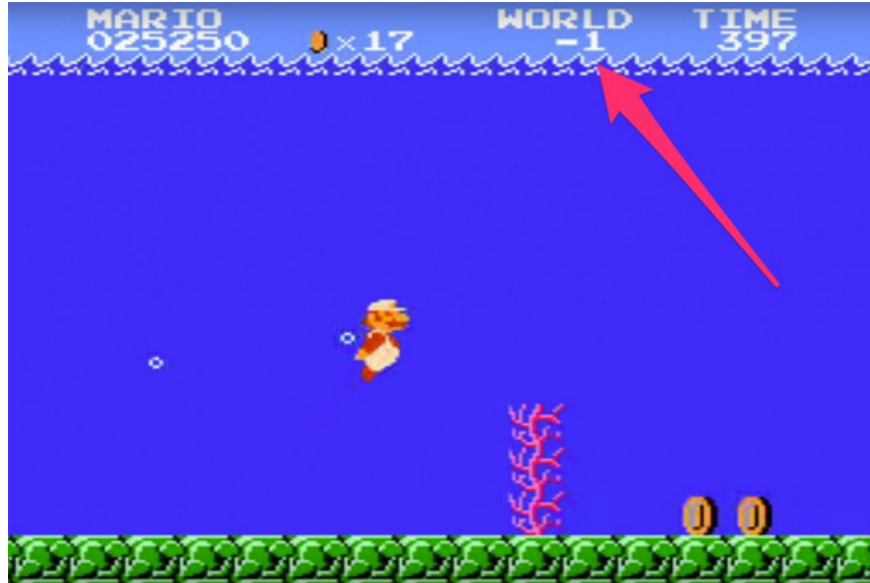
These hidden levels bring an exciting obstacle course that doesn't follow any rules. However, they were hidden when the manufacturer did not intend to bring the game to the players. But not that there is no way for you to experience these fascinating hidden levels. Follow the 2 ways below to unlock the mystery of the Mario game.

Method 1: Unlock the world of Mario Negative World game

Negative World is a level below the water and you can't advance in this world. The task is simply to complete this level and we will be moved back to the original position, like that again and again. This secret world can be unlocked relatively easily, when we perform a backwards jump in the game while at 2, 1-2:



Soon we will be taken to the Negative World world with **the -1 symbol under Word** :

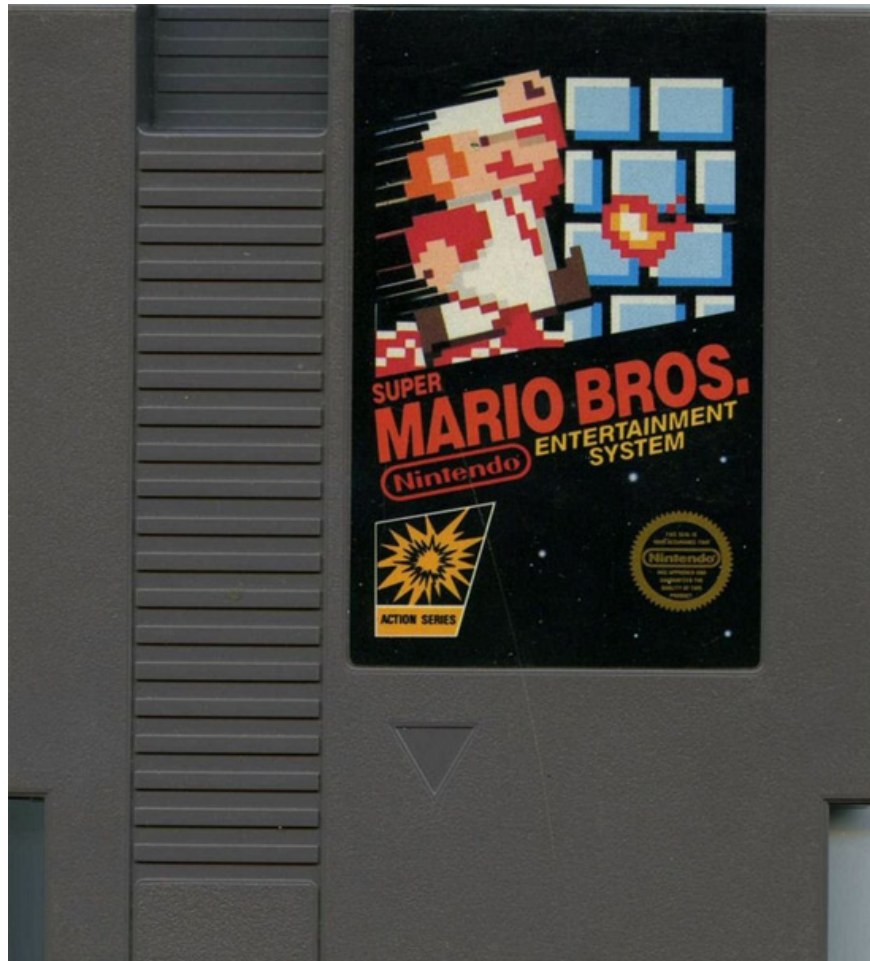


Method 2: Hack the system to open hundreds of hidden levels

With the Negative World world, you can only immerse yourself in the clear blue sea with the pitfalls, and can't go any further. As for this second way, we can open hundreds of different mysterious scenarios. The worlds contain hundreds of different challenges, obstacles and unprecedented dangers that will bring gamers lots of fun.

To be able to do this hack, you need to prepare the following tools:

Original Super Mario Bros Tape:



Ice game Tennis for the original Nintendo Entertainment System:



Nintendo Entertainment System gaming machine has a tape player on top:



Step 1:

You will bring Super Mario Bros into NES and start playing.



Step 2:

When **playing the first level** , 1-1 you **remove the tape from the machine while the device is still running** . Be careful not to damage both the machine and the tape.



Step 3:

Put the Tennis tape in the machine then press **the Reset button** . The menu screen interface will appear as below:



Step 4:

Let's play the game as usual.